

Fort Lauderdale – Hollywood International Airport

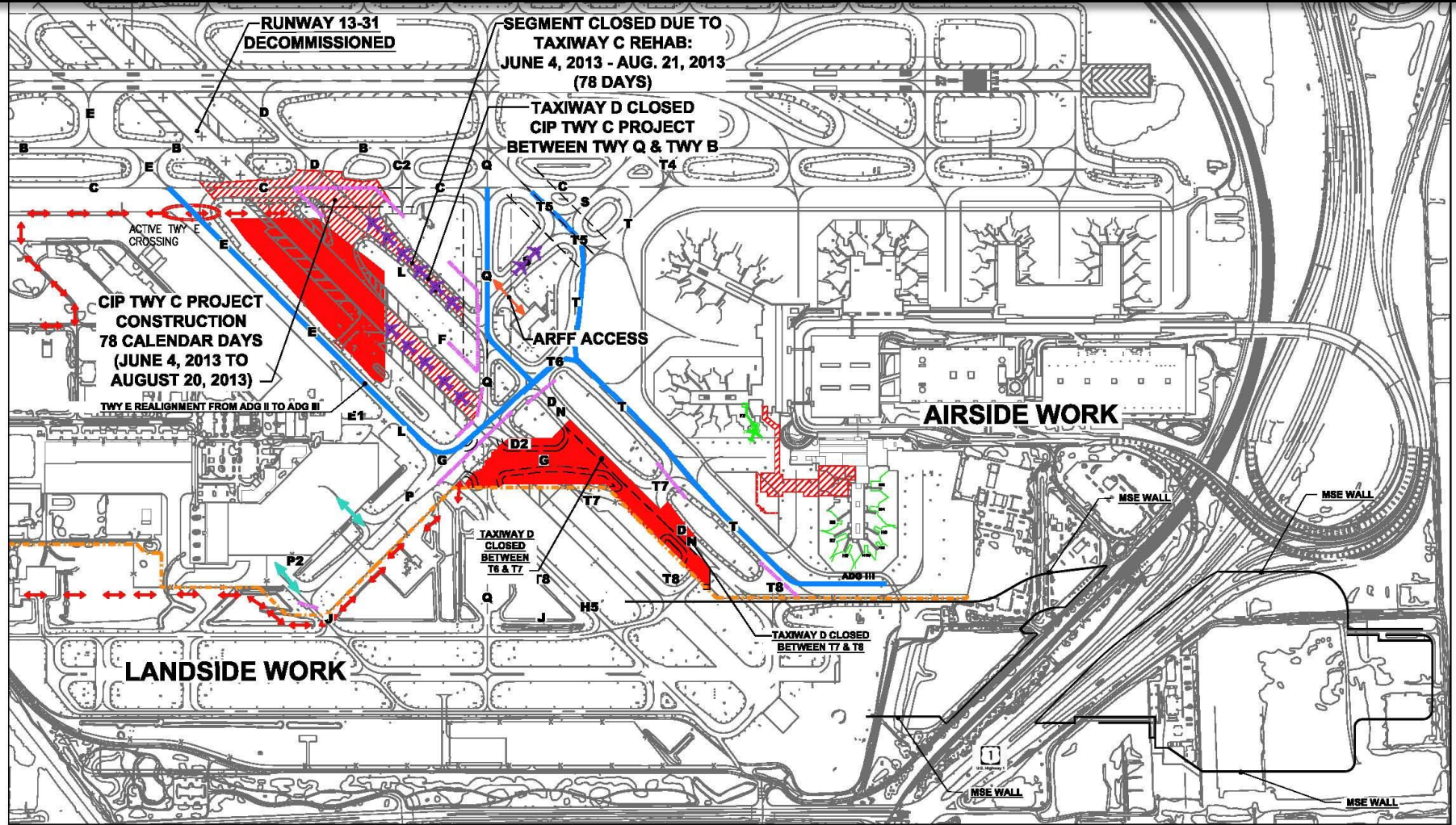
Runway Safety Action Team Meeting

July 24, 2013



Federal Aviation
Administration

July 15th – September 30, 2013



LEGEND

	COMPLETED		AIRCRAFT TAXI ROUTE		TEMPORARY BARRICADES
	UNDER CONSTRUCTION		AOA FENCE		MOVEMENT VS. NON-MOVEMENT

CONTACT GATES

OPEN (8) H2, H4, H5, H6, H7, H8, H9 & H10	CLOSED (3) F2, H1, H3, RON G & H14
--	---

FLL SURFACE INCIDENTS UPDATE

May 16, 2012 (last RSAT) to July 23, 2013

8 PD's

2 VD's

2 OI's

12 total

(11 classified as RI's – 2 resulted in Loss of Separation)

(1 classified as a SI)

FLL SURFACE INCIDENTS UPDATE - SUMMARY

PILOT DEVIATIONS

- **8 PD's** No Loss of Separation:
- ❖ **5 crossed RWY 13/31 Hold Bars;**
 - 4 were at the TWY P / TWY Q intersection**
 - 1 at TWY B / RWY 13/31 intersection**
- ❖ **1 crossed RWY 9L at TWY D after missing left turn to TWY B**
- ❖ **1 A/C in position RWY 9L took another A/C's control instructions (Go Around - FH 090, M20) as a T.O clearance and departed**
- ❖ **1 A/C Taxied onto a closed taxiway (barricaded TWY C – TWY E to TWY C1), aircraft never acknowledged alternate instructions to turn left on TWY B**

PILOT ALERT

PLEASE POST AND DISSEMINATE TO ALL PILOTS AND PILOT LOUNGES

September 12, 2012

FLL 2012-09-12

BCAD Operations - Airside

RWY 13/31 "Incursion Alert" (2 locations) TWY Quebec & TWY Papa



Numerous aircraft are failing to hold short of RWY 13/31 ~ two problems are occurring:
(1) aircraft southbound on TWY Q fail to hold short of RWY 13/31 when required by ATC
(2) aircraft taxiing to RWY 9L via TWY P & TWY E fail to turn left at TWY E & enter RWY 13/31

RWY 13/31 is often active due to airport construction

Maintain situational awareness on the surface during construction – there are new risks!

**SITUATIONAL AWARENESS WHILE
TAXIING – KNOW WHERE YOU ARE**

FLL SURFACE INCIDENTS UPDATE – SUMMARY (CONT.)

VEHICLE DEVIATIONS

2 VD's No Loss of Separation :

- 1 VD Vehicle entered TWY A (no ATC contact), crossed RWY 9L approach end, proceeded via TWY C crossed RWY13 Hold Bars, continued via TWY E crossed closed RWY 9R and RWY 13 (mid-shift).

- 1 VD Vehicle (in contact with ATC) on TWY A, at TWY D entered onto RWY 9L without authorization, exited onto grass island

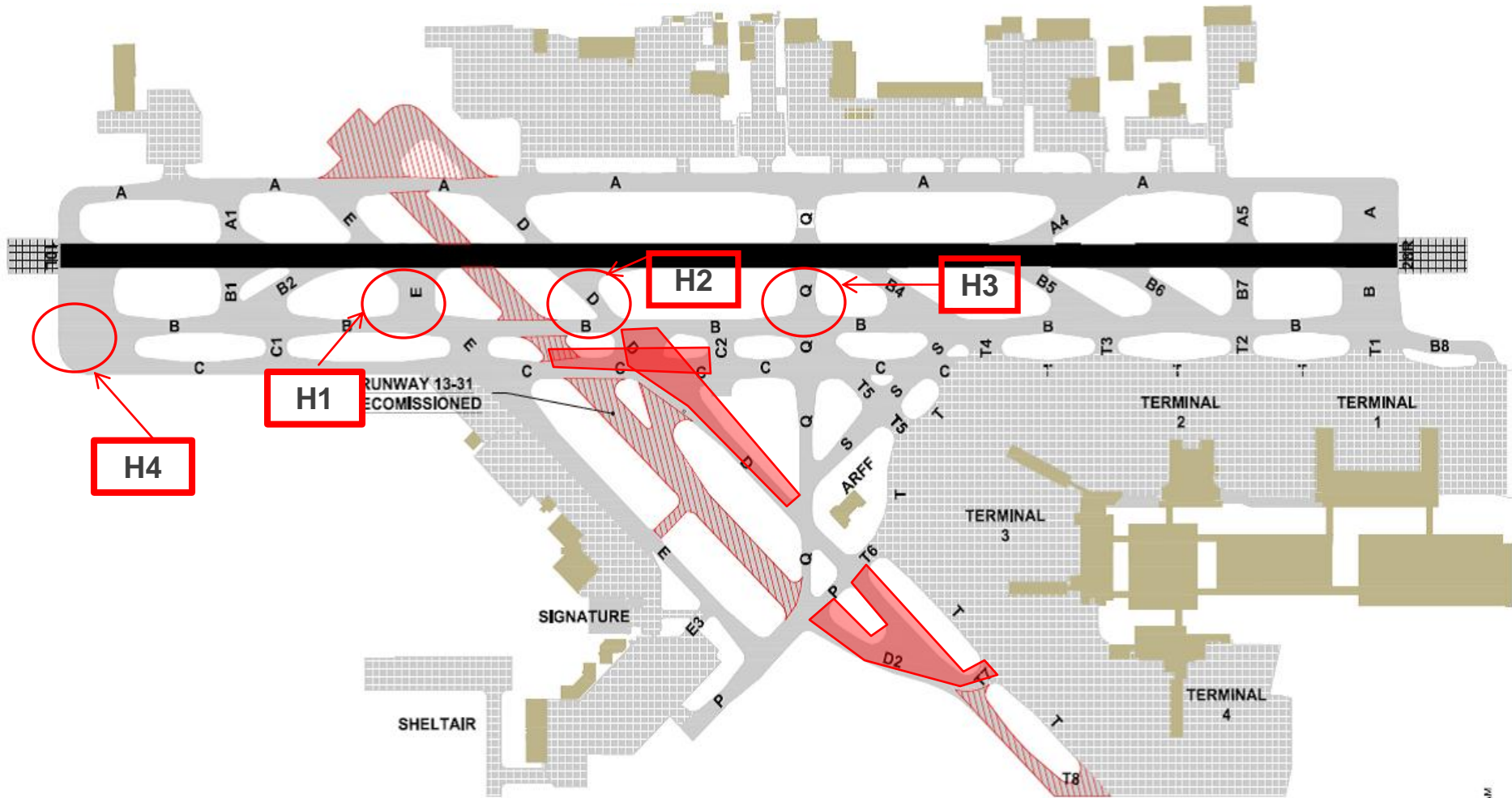
FLL SURFACE INCIDENTS UPDATE – SUMMARY (CONT.)

OPERATIONAL INCIDENTS

2 OI's Both Involved a Loss of Separation:

- **1 OI** A miscommunication occurred between the Local Controller and Ground Controller. An aircraft and a vehicle were coordinated crossings for RY 13 at TWY P and an aircraft was coordinated crossing RY 9L at TWY Q. The coordination between the controllers was incomplete and not per FAA Orders. The Local controller believing the RY 13 crossings were complete cleared an aircraft for takeoff. The aircraft commenced takeoff roll as the vehicle was exiting the RY 13 environment. Closest proximity was 2,550 ft.
- **1 OI** An PA23 landed RY 27R and was instructed to exit the runway at TWY D. The controller did not notice the aircraft had not fully exited the runway and cleared a C550 for takeoff, the C550 began a a takeoff roll. The controller noticing the PA23 still on the runway cancelled the takeoff clearance on the C550 which was complied with and exited the runway at TWY A4. Closest proximity was 4,500 ft.

AIRPORT HOT SPOTS



FORT LAUDERDALE-HOLLYWOOD INTERNATIONAL AIRPORT (FLL)

AIRPORT CONSTRUCTION ADVISORY COUNSEL (ACAC)

WEBSITE

- <https://nfdc.faa.gov/xwiki/bin/view/NFDC/Construction+Notices>

RUNWAY SAFETY ACTION PLAN

- *Participants, including Affiliation:*
 - *Please complete the sign in sheet*
- *Runway Safety Concerns at FLL:*
 - *What continuing concerns do we have?*
 - *What new concerns do we have?*
- *FLL Best Practices:*
 - *What do we do?*
 - *What can we share?*
- *Action Items:*
 - *Proposed Implementation*
 - *Responsible Party*
 - *Safety risk Assessment*

Maintain Situational Awareness



Don't Be a Runway Incursion