

An aerial photograph of the Fort Lauderdale-Hollywood International Airport expansion site. The image shows a large, flat area with several long, parallel runways and taxiways. In the background, there are various airport buildings, including a large terminal complex. The surrounding area includes green grass, trees, and a residential neighborhood with houses and a canal. The sky is clear and blue.

Fort Lauderdale – Hollywood International Airport
Airport Expansion Program
for the
Expansion of Runway 9R-27L, Terminal 4 Gate Relocation
and Land Acquisition for Runway 9R-27L

June 25, 2010



Please Note: All dates are tentative and subject to change

Fort Lauderdale – Hollywood International Airport Program Description

In December of 2008, Broward County received authorization from the Federal Aviation Administration to proceed with the Expansion of Runway 9R-27L and Terminal 4 Gate Replacement. Generally, this expansion program includes the following:

Expansion of Runway 9R-27L

- Expand and elevate Runway 9R/27L to an overall length of 8,000 feet and width of 150 feet with an Engineered Materials Arresting System (EMAS) at both runway ends.
- Construct a new full-length parallel taxiway 75 feet wide on the north side of Runway 9R/27L
- Construct an outer dual parallel taxiway
- Construct connecting taxiways from the proposed full-length parallel taxiway to existing taxiways.
- Construct an Instrument Landing System (ILS) for landings on Runways 9R and 27L.
- Decommission and permanently close Runway 13/31, the crosswind runway.

Terminal 4 Gate Relocation

Relocation of three (3) Terminal 4 gates on the H-Concourse and Construction of a new Terminal 4 Western expansion including connecting Terminal 4 with Terminal 3.

The following slides are intended to depict the phasing of this expansion program by quarters in a very broad view; hence, the dates are tentative and subject to change.

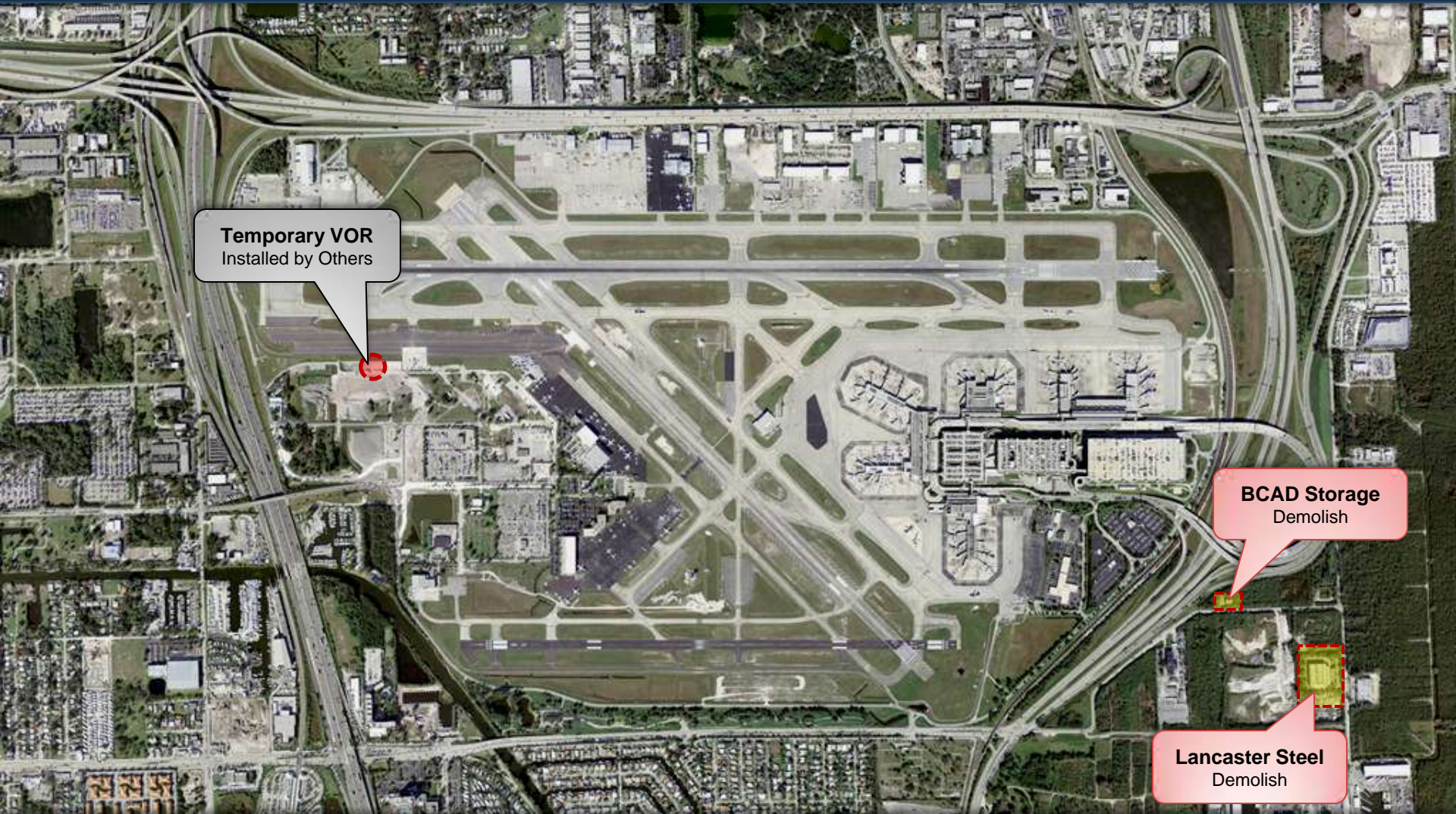
Fort Lauderdale – Hollywood International Airport

List of Acronyms / Definitions

ASR-9	Airfield Surveillance Radar
BCAD	Broward County Aviation Department
FEC RR	Florida East Coast Rail Road
Glide Slope	Provides precision guidance to an aircraft approaching and landing on a runway.
Localizer	Provides runway horizontal alignment to approaching aircraft
MALS	Medium-intensity Approach Lighting System
MALSR	Medium-intensity Approach Lighting System with Runway Alignment Indicator lights
PAPI	Precision Approach Path Indicator
VOR	VHF Omnidirectional Range navigation system

Fort Lauderdale – Hollywood International Airport

Expansion of Runway 9R-27L, Terminal 4 Gate Replacement and Land Acquisition for Runway 9R-27L



4th Q/2010

Timeline



Fort Lauderdale – Hollywood International Airport

Expansion of Runway 9R-27L, Terminal 4 Gate Replacement and Land Acquisition for Runway 9R-27L



1st Q/2011

Timeline



Fort Lauderdale – Hollywood International Airport

Expansion of Runway 9R-27L, Terminal 4 Gate Replacement and Land Acquisition for Runway 9R-27L



2nd Q/2011

Timeline



Fort Lauderdale – Hollywood International Airport

Expansion of Runway 9R-27L, Terminal 4 Gate Replacement and Land Acquisition for Runway 9R-27L



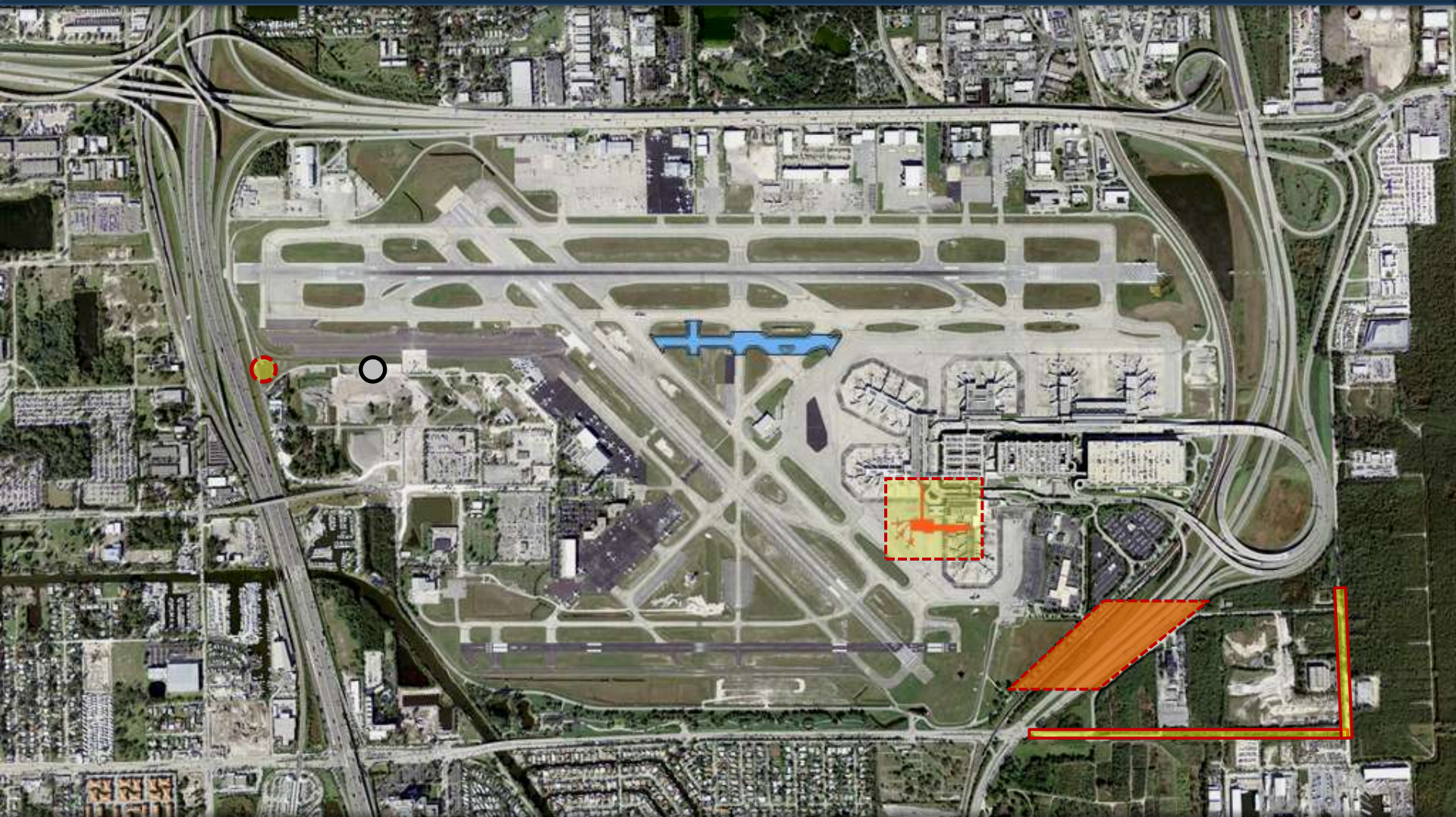
3rd Q/2011

Timeline



Fort Lauderdale – Hollywood International Airport

Expansion of Runway 9R-27L, Terminal 4 Gate Replacement and Land Acquisition for Runway 9R-27L



4th Q/2011

Timeline



Fort Lauderdale – Hollywood International Airport

Expansion of Runway 9R-27L, Terminal 4 Gate Replacement and Land Acquisition for Runway 9R-27L



1st Q/2012

Timeline



Fort Lauderdale – Hollywood International Airport

Expansion of Runway 9R-27L, Terminal 4 Gate Replacement and Land Acquisition for Runway 9R-27L



Site Prep.
Expanded

2nd Q/2012

Timeline



Fort Lauderdale – Hollywood International Airport

Expansion of Runway 9R-27L, Terminal 4 Gate Replacement and Land Acquisition for Runway 9R-27L



3rd Q/2012

Timeline



Fort Lauderdale – Hollywood International Airport

Expansion of Runway 9R-27L, Terminal 4 Gate Replacement and Land Acquisition for Runway 9R-27L



Timeline



4th Q/2012

Fort Lauderdale – Hollywood International Airport

Expansion of Runway 9R-27L, Terminal 4 Gate Replacement and Land Acquisition for Runway 9R-27L



1st Q/2013

Timeline



Revised on: 6/25/10 (all dates are tentative and subject to change)

Fort Lauderdale – Hollywood International Airport

Expansion of Runway 9R-27L, Terminal 4 Gate Replacement and Land Acquisition for Runway 9R-27L



2nd Q/2013

Timeline



Fort Lauderdale – Hollywood International Airport

Expansion of Runway 9R-27L, Terminal 4 Gate Replacement and Land Acquisition for Runway 9R-27L



3rd Q/2013

Timeline



Revised on: 6/25/10 (all dates are tentative and subject to change)

Fort Lauderdale – Hollywood International Airport

Expansion of Runway 9R-27L, Terminal 4 Gate Replacement and Land Acquisition for Runway 9R-27L



4th Q/2013

Timeline



Fort Lauderdale – Hollywood International Airport

Expansion of Runway 9R-27L, Terminal 4 Gate Replacement and Land Acquisition for Runway 9R-27L



Timeline



1st Q/2014

Fort Lauderdale – Hollywood International Airport

Expansion of Runway 9R-27L, Terminal 4 Gate Replacement and Land Acquisition for Runway 9R-27L



Timeline



2nd Q/2014 3rd Q/2014