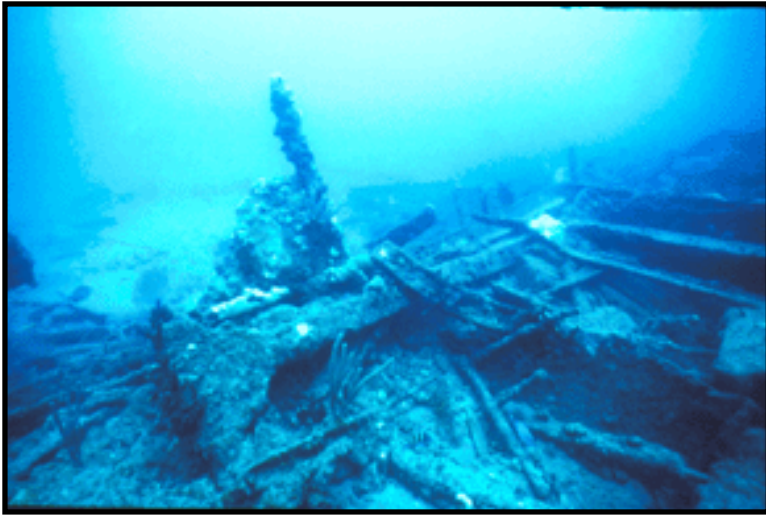


# ARTIFICIAL REEFS



- [Introduction](#)
- [Diving on an Artificial Reef](#)
- [Fishing the Artificial Reefs](#)
- [Broward County Artificial Reef Locations](#)

## INTRODUCTION

Just as our beaches attract tourists, our offshore marine environment draws diving and fishing enthusiasts from all over the world. While this represents an important asset to Broward County, it also creates significant pressures on our natural resources. Boat anchors and scuba divers can cause physical damage to natural reefs by breaking coral or "uprooting" other attached marine animals. Commercial and recreational fishing, spear fishing or lobster-taking can also seriously deplete fishery resources.

Since 1982, the Broward County Department of Planning and Environmental Protection (DPEP) has created over 75 artificial reefs offshore of Broward County. The reefs, which are designed to create a new stable substrate, are made from a variety of materials, including: ships, barges, oil rigs, limestone rock, concrete culverts, engineered concrete artificial reef modules and other environmentally suitable artificial reef materials. These materials are deployed into various depths of the Atlantic Ocean offshore of Broward County where they quickly become habitat for a myriad of marine life. Through the artificial reef program DPEP is not only creating additional habitat for various marine organisms and fish but is also helping to decrease user pressure on our natural reefs. This will benefit both our environment and our economy for years to come.

When utilizing an artificial reef, it is important to practice conservation and courtesy so that the reef can continue to be of benefit to others.

The construction of artificial reefs has been a joint effort among government agencies, corporations,

foundations, and individuals. Tax deductible donations of material, services, and transportation costs have been the keys to the success of the Artificial Reef Program. Donations to the Artificial Reef Program are always welcome and these donations will help to make Broward County a better place to live, work, and visit.

[\[Back to the Top\]](#)

## DIVING ON AN ARTIFICIAL REEF

Many SCUBA Divers have found artificial reefs to be a beautiful and exciting dive. The diving-oriented artificial reefs in Broward County are diverse in type, depth, and level of diving difficulty. As with any wreck dive, inherent safety concerns are paramount. Wreck Diver Certification is extremely beneficial and is available through most dive facilities in Broward County. There are many days off Broward County where there is 100'+ visibility and no current. There are also days where visibility is bad, the current strong, and the ocean rough. It pays to assess the situation before leaving the dock and again at the wreck site. It is better to abort a planned dive than to end up in trouble. The wreck will be there for many decades.

When over an artificial reef, a prudent skipper will always leave someone aboard the boat who can operate the boat in an emergency. This person should maintain a watch for divers surfacing downstream of the artificial reef. Another precaution when diving an artificial reef is to be aware of the hazards of monofilament fishing line and other snags. The buddy system is crucial to wreck diving. Each diver should carry a knife and/or wire cutter to avoid entanglement.

Penetration of any wreck is not recommended. The most colorful and beautiful corals, sponges and fish are on the outside of the wreck where sunlight enhances growth of these organisms. Divers should always maintain their dive profile and should be aware that some dive oriented artificial reefs rise sixty feet off the ocean floor. Pre-dive planning and staying with that plan is important to avoid barotrauma. Finally, only dive within your capability. Make diving on Broward's artificial reefs a safe and enjoyable experience.

[\[Back to the Top\]](#)

## FISHING THE ARTIFICIAL REEFS

Many different species of fish can be caught over or near artificial reefs. Reefs deeper than 200' are especially productive for large pelagic predators. Amberjack, strong, fighting fish that can weigh over 100 lbs., are one of the most common reef residents. The amberjack school over the artificial reefs from January to July, with May being the peak month. During this period, the fish are spawning and there is the potential for over harvesting. Because of their relatively poor table value, amberjack should be released whenever possible. It is best to keep the fish in the water while removing the hook or cutting the leader. When caught, the amberjack's air bladder often inflates and the fish is not able to descend after being released. The gentle insertion of an ice pick or large hypodermic needle, into the air bladder will deflate the air bladder without hurting the fish. Other species of wreck dwellers are black, gag, warsaw, and snowy groupers. Giant jewfish also make many of the wrecks their home. Anglers should remember that grouper are extremely slow-growing fish and conservation of these species is critical. For current regulations visit the [Florida Fish and Wildlife Conservation Commission](#) site.

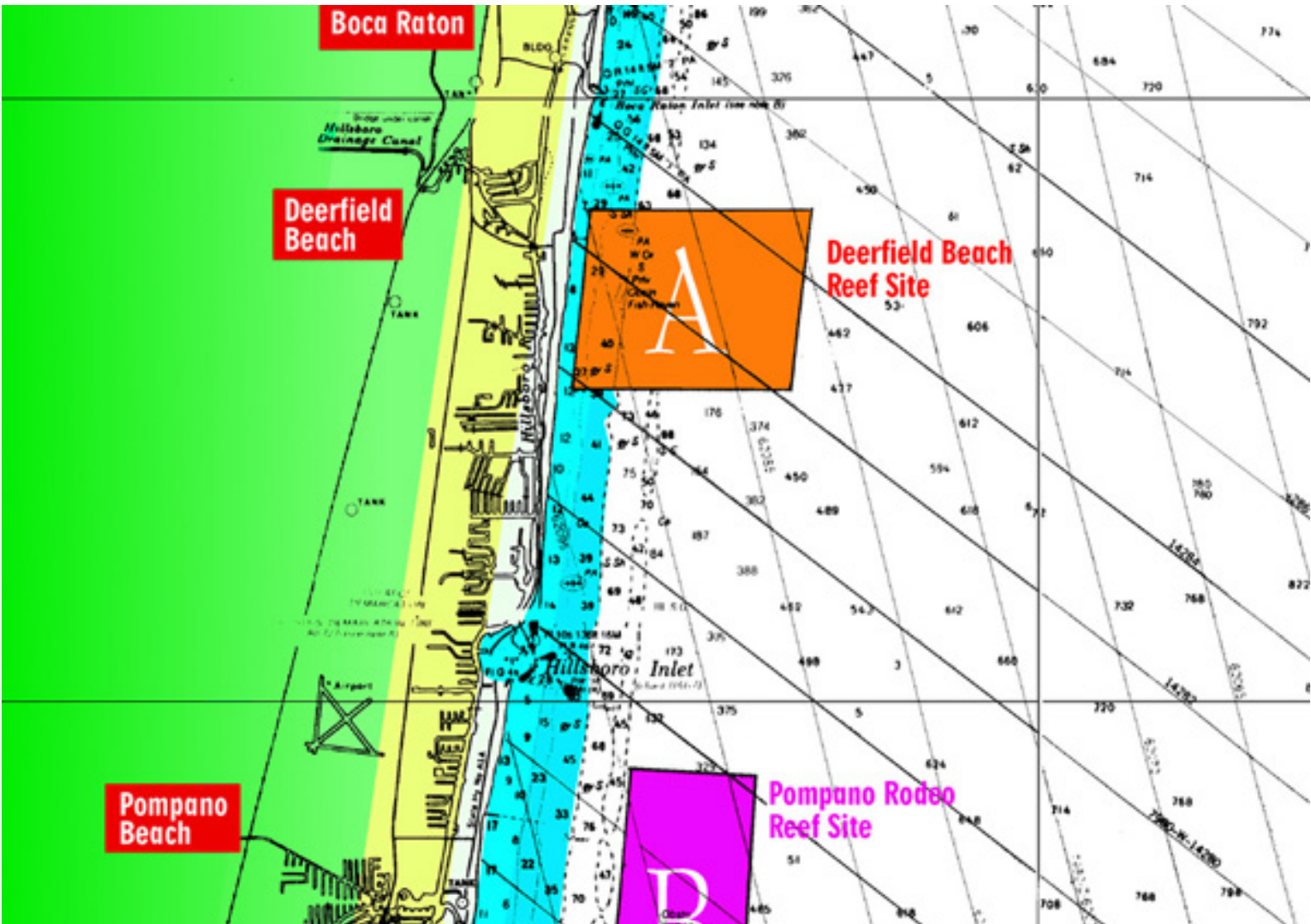
Fishermen need not be directly on top of an artificial reef to benefit from it. Many species, including sailfish, kingfish, Spanish mackerel, barracuda, mutton snapper, and cobia appear to use the artificial reefs as the center for their feeding forays. These blue water roamers can be caught in abundance many hundreds of yards from the artificial reef. Cold, plankton-rich waters are forced by the Gulf Stream up and over the top of the wreck. Often, in strong currents, an eddy can be seen on the surface, down current from an artificial reef. Game fish often lurk in this "disturbed" water, feeding on bait fish and pelagic crustaceans.

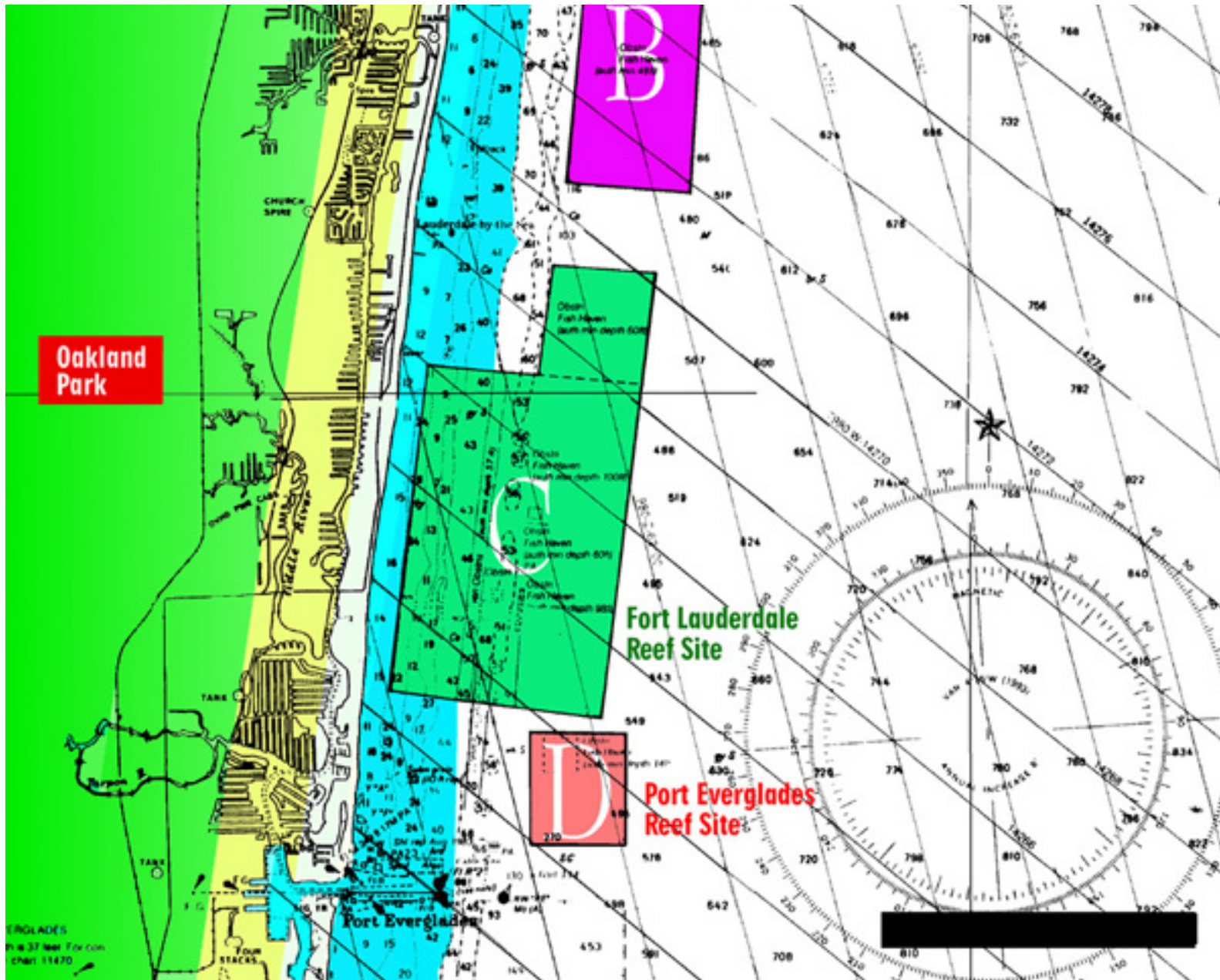
The Artificial Reef Program needs data regarding the artificial reefs. Please report catches (species, size, date, reef name where caught) and any unusual sightings or events by calling (954) 519-1230 or by writing to Broward County Artificial Reef Program, 218 S.W. 1st Avenue, Fort Lauderdale, Florida 33301. This information will help us to plan future reefs to better the environment and fishing.

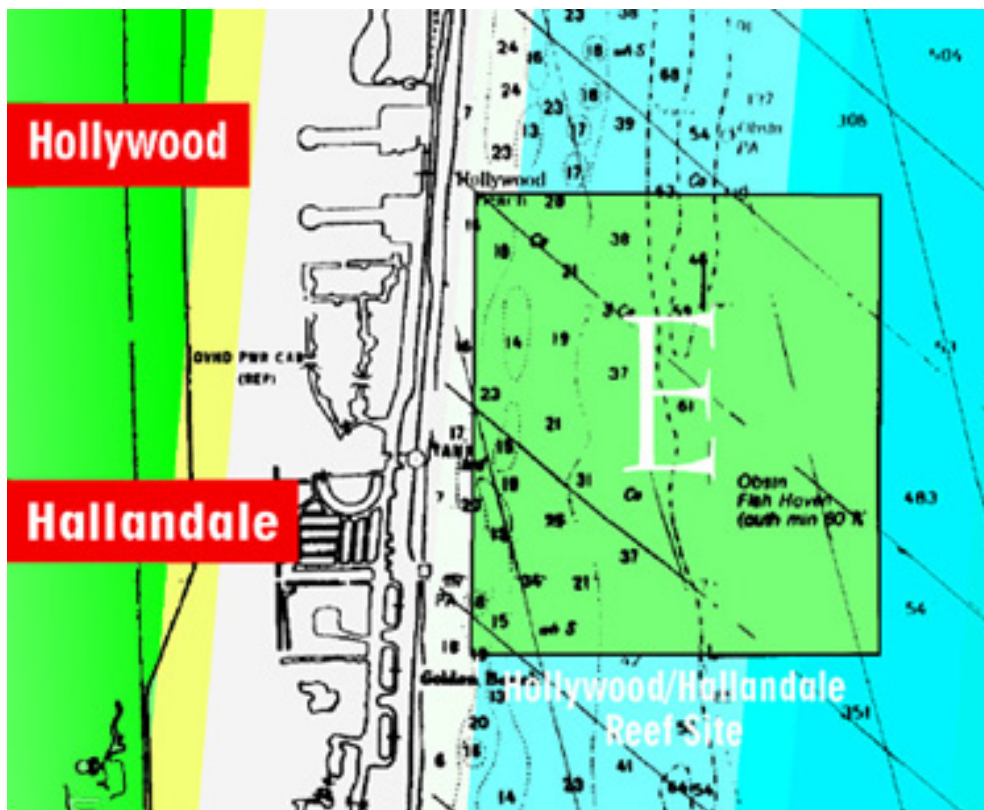
[\[Back to the Top\]](#)

## LOCATIONS

Click on artificial reef site for descriptions & locations within that site.







BROWARD COUNTY  
 DEPARTMENT OF PLANNING AND ENVIRONMENTAL PROTECTION  
 ARTIFICIAL REEF PROGRAM  
 1/3/2003

Site	Reef Name	Description	Latitude	Longitude	Depth (ft)	Year
D	AFDL- 8	Floating NAVY Drydock	14261.2	62107.4	220	6/22/1982
B	ALPHA	85' Riveted Schooner (Rodeo Divers Reef)	26 13.857' N	80 04.027' W	78	2/28/1988
A	Ancient Mariner	Former 165' USCG Cutter Nemesis (part of Berry Patch)	26 18.117' N	80 03.745' W	70	6/9/1991
C	Atria ( Jim)	240' Freighter	26 09.870' N	80 04.225' W	112	9/23/1987
A	Berry Patch	65' Tug boat & 3 other vessels	26 18.117' N	80 03.745' W	65	8/15/1987
C	Bill Boyd	211' Dutch Freighter	26 09.088' N	80 03.842' W	265	7/18/86
B	Boating Magazine/ Wildlife Forever	Former 150' Dredge Dewit Clinton	26 14.056' N	80 03.666' W	156	4/29/1995

C	Bruce Mueller	Laud. Billfish Tourn. 1955 steel Christ Craft	26' 10.1162 N	80' 04.7057 W	45	2/10/96
C	Bud Krohn	Former 183' Spanish Freighter Argo Trader	14269.8	62095.4	440	12/3/1989
B	Buddy Merrit	80' Barge & Welded Yacht cradles	26 14.15' N	80 03.36' W	414	12/17/87
C1	Bulk Trader	180' oilrig supply ship	26 08.6104 N	80 03.8348 W	313	10/4/2002
B	Caicos Express	185' Dutch Freighter	26 12.502' N	80 03.663' W	240	11/12/1985
B	Capt. Dan Garnsey	Former Mission Ship &175' USCG Bouy Tender Holly-Hock	26 13.857' N	80 03.960' W	109	2/20/1990
E	Capt. DeDe	50' Concrete Sail Boat	26 00.5746' N	80 05.5910' W	75	10/9/1993
C	Chevron 1	12 Service Station Fuel Tanks	26 07.40 N	80 04.55 W	73	Dec-83
C	Chevron 2	15 Service Station Fuel Tanks (Part of Grouper Grotto)	26 08.382' N	80 04.328' W	150	Dec-83
C	Chevron 3	Service Station Fuel Tanks	26 08.09 N	80 04.10 W	190	Dec-83
B	Chevron / Rodeo	39 Service Fuel Tanks	14271.3	62097.1	170	Dec-83
D	Christ Craft Molds	.	14261.4	62107.2	70	1978
.	Chris Coffman Reefball Memorial Reef	11Reefballs	26 07.4625' N	80 05.8850' W	22	8/1/1996
A	Chuck-A-Luck	50' Steel House Boat (Part of Berry Patch)	26 18.117' N	80 03.745' W	70	9/12/1989
B	Corey andChris	180' Army Dredge Trident	26 13.863' N	80 03.432' W	244	5/18/1986
C	Corky M	41' steel hulled sail boat. Former Sea Bear	26 10.085' N	8004.709 W	65	4/8/1997

E	Cruz del Sur	275' German Freighter	25 58.167' N	80 04.637' W	230	12/19/1986
E	Curry Reef : 30'/20' Steel Barge with Crane Boom Pieces (D)	30'/20' Steel Barge with Crane Boom Pieces	26 00.6481 N	8005.6057 W	75	8/24/1994
E1	Dantor: 160' steel Freighter (D)	160' steel Freighter	26 00.5905' N	80 04.9899' W	128	5/2/02
.	DERM Modules: ATT Mitigation	ATT Mitigation	26 03.3649' N	80 05.8129' W	40	2001
A	Deerfield Pier (D)	Concrete pier pieces	26 18.932' N	80 03.756' W	67	1992
C	D.N.R. Barge Pieces	(part of Hog Heaven)	26 08.557' N	80 04.637' W	70	1982
C	Dog Pile	491 Tons of Lime Stone Boulders	26 08.559' N	80 04.852' W	65	6/23-24/99
E	Donal G McAllister	New York Harbor Tug	26 00.548' N	80 05.565' W	70	6/23/1998
C	Eagle Scout Reef	24 Reef Balls	26 07.4962 N	80 05.8890 W	22	8/25/95
E1	Eben-Ezer-2	85' Island Freigrter	26 00.398' N	80 05.589' W	69	5/14/02
E	Emmi Boggs	14' x 55' LCM	26 00.6058 N	80 05.6168 W	75	12/8/1995
N/A	Erojacks, (Dania)	Erojacks, (Fort Lauderdale)	14254.2	62123.0	15	.
N/A	Eternal Reefs	.	14259.8	62116.7	25'	1967
D	F.A.D.	Nova Midwater Kites	14262	62107.2	110	1982
B	Fishamerica/Jim Torgerson	Former "RSB-1"; 160' Navy work boat	26 13.642 N	80 03.896 W	115	4/23/1994
C	Florida League of Anglers (F.L.A)	144' Navy Minesweeper	26 10.15 N	80 03.36 W	388	7/8/1986
D	Grady Barges	2 - 23'x43' Barges	26 06.764 N	80 04.228 W	191	3/2/2000
E	Grady Hopper	31' x 61' barge & 150 Tons of limestone boulders	26 00.6153' N	80 05.6444' W	70	3/2/01
C	Great Lakes	Pontoons&Pipe	14263.9	62105.1	170	12/1/1983

C	Grouper Grotto	60' Barge,Chevron Fuel Tanks,Dredge Pipe,Concrete Culvret	26 08.382' N	80 04.328' W	146	1983
B	Guy Harvey	185' Haitian freighter, former M/V Lady Kimberly Built in Holland 1957	26 12.655 N	80 03.946 W	135	5/10/1997
C	Harbor Town	Former 95' Sail Boat (Pride)	14265.2	62106.3	70	11/21/1987
C	Hog Heaven	Western Barge(180'), 200' of Dredge Pipe, Pacific Reef Lighthouse(1/30/89)	26 08.102' N	80 04.786' W	70	9/19/86
E	Hollywood Reef	30 Reef Balls,tons of Concrete Pipe; 2 Barges (12'/24')	26 00.459' N	80 05.62' W	73	2/1-2/95
C	House Boat	70' Steel Houseboat	14263.7	62107	95	1974
A	Hydro Atlantic	300' Dredge (not an A.R.)	26 19.5000' N	80 03.043' W	184	12/7/1987
B	Imor	85' Polish Trawler	26 13.048' N	80 03.760' W	165	8/3/91
B	Jay Dorman	130' English Schooner (Part of Rodeo Divers Reef)	26 13.857' N	80 04.027' W	78	2/28/1988
C	Jay Scutti	97' Holland Tug Boat	26 09.520' N	80 04.760' W	64	9/19/1986
D	Joes Nightmare	90'x 30' steel barge	26 06.8016' N	80 04.2248' W	217	10/22/1996
B	Johnny Morris Offshore Angler	237' German Freighter Built in 1957	26 14.3827 N	80 03.4113 W	215	4/27/1996
N/A	J.U.L. Reef	6 Boulder Mounds (south end)	26 04.220' N	80 06.562' W	10	1991
B	Kornahrens	1800 Tons of Navy Subnetting	26 12.48' N	80 03.19' W	140	12/31/1990
B	Lowrance	435' Canadian Freighter	26 13.202' N	80 03.640' W	200	3/31/1984

## Artificial Reefs

B	Mariner 1	Former Union Express, 170' German Freighter	26 14.42' N	80 03.51' W	108	4/25/1992
B	Mariner 2 (tug)	110' Tug Boat	26 13.937' N	80 03.828' W	110	5/1/1993
B	Mariner 2 (barge)	130' Barge	26 14.092' N	80 03.830' W	110	5/1/1993
D	Marriot	94' DC-4 Airplane	14261.4	62109.8	71	11/26/1985
B	Mako	Numerous Mako Hull Molds	14272	62096.2	240	1986
C	Mercedes	190' German Freighter	26 09.370' N	80 04.513' W	97	3/30/85
C2	Merci Jesus	90' Freighter	2609.635' N	8004.747' W	72	8/11/1998
E	Michelline	32' concrete sail boat	26 00.6012' N	80 05.5992 W	70	12/17/2000
B	Miller Lite	Former 186' German Freighterly "Principe Maya"	26 14.207' N	80 03.677' W	155	5/17/87
D	Monomy	82' Yacht	14263.2	62107.5	60	1970
C	MOONSHOT	45' Vessel Donated by River Bend Marine (Located South of Harbor Town)	.	.	70	5/6/1989
C	NOVA/Rinker Proj.	30 concrete Swiss cheese modules (Shallow)	2608.13' N	8005.79' W	20	7/22/96
C	NOVA Reef Ball Study	30 pallet balls	2608.88' N	8004.81' W	70	1/23/1997
C	NOVA/Rinker Proj.	30 concrete Swiss cheese modules (Deep)	2608.19' N	8004.95' W	67	7/22/96
A	Noula Express	114' Danish Freighter	26 19.278 N	80 03.448 W	71	10/18/1991
D	N.S.W.C. Cable Spools	.	26 10.49 N	80 03.22 W	150	10/18/1991
B	N.S.W.C. Acoustic Array 1	(SE from Capt Dede)	.	.	63	3/26/92

D	N.S.W.C Sea Con Reef	2 Acoustic Arrays and concrete	26 00.6012 N	80 05.6241 W	74	5/14/93
C	Osborne	Erojack circle(Part of BAR Inc.Reef Program); 60'Barge; tires; concrete culverts	26 08.320	80 04.830	65	1972
B	Papa's Reef	Formerly Ebbtide, 170' Dutch Freighter	26 14.102' N	80 03.383' W	260	5/14/1989
C	Paul Sherman	Formerly "Salvager 3", 56' Treasure Hunter converted from shrimper	14264.8	62106.6	70	8/18/1991
A	Pennels Reef	Dredge Pontoon	26 19.180' N	80 04.080' W	30	12/30/1993
C	Peter B. McAllister	New York Harbor Tug	26 10.149' N	80 04.718' W	69	6/16/1998
C	Pipe & Pontoons	Part of Hog Heaven	26 08.102' N	80 04.786' W	65	1988
D	Port Everglades Reef	Concrete Piers	26 06.76' N	80 04.04' W	150	1/31/1989
C	Powell Barge	DB24 Loaded with cement mixer drums & concrete pilings.	26 07.888' N	80 03.445' W	314	4/10/1986
A	Qualmann Barge	32'x 100' steel barge	26 17.9769' N	80 03.7097' W	69	7/21/2000
B	Qualmann Tugs	Part of Rodeo Divers Reef	26 13.857' N	80 04.027' W	78	1/4/1985
C	Rebel	135' Norwegian Coastal Freighter	26 10.253' N	80 04.332' W	110	7/16/1985
C	Reef Balls (Shallow)	Prefabricated Concrete	26 07.53'N	80 04.40'W	23	3/21-22/95
C	Reef Balls (Midwater)	Prefab. Concrete	26 07.4940' N	80 04.9123' W	65	3/21-22/95
C	Reef Balls (Deep)	Prefabricated Concrete	26 07.807' N	80 04.390' W	144	4/29/95
B	Renegade	150' Dutch Coastal Freighter	26 13.360' N	80 03.620' W	190	7/10/1985

C	Reuben Reef	PVC Structure, Tote Machine	14262.5	62109	70	1/22/86
C	Rinker (Shallow)	40 Engineered Concrete Modules (SE Corner Coordinates)	26 07.3248' N	80 05.4777' W	22	9/28/94
C	Rinker (Deep)	20 Engineered Concrete Modules (SE Corner Coordinates)	26 07.71' N	80 04.40' W	75	9/29/94
C	Robert Edmister	Former 95' USCG Cutter Cape Gull	26 09.193' N	80 04.837' W	70	12/11/1989
B	Rodeo 25	215' Freighter Built in Amsterdam in 1956, Formerly Windward Trader	26 13.878' N	80 03.813' W	122	5/12/1990
B	Ronald B. Johnson	226' Bulk Carrier Built in Holland in 1955. Formerly "Otto"	26 13.880' N	80 03.445' W	230	5/15/1988
C	Rubber Reef	Tire/Concrete Tetrahedrons	26 07.5201' N	80 05.8513' W	22	3/29/1993
N/A	Sea Emperor	(Palm Beach County)	26 19.350' N	80 03.533' W	.	.
C1	Peewee Vreeland	formerly Sherida Express, formerly Neil Express; 143' Coastal freighter	2608.206' N	8004.967' W	250	4/27/1999
C1	Spagheetti Barge	Barge, Small vessels	14263.7	62106.7	105	1972
E	Summerfield	40' concrete sail boat	26 00.5768' N	80 05.5845' W	70	12/17/2000
D	TE AMO	105' Sail Boat (L)	14261.8	62106.6	215	1985
E	Tenneco	(Shallow) Oil Rig Decks	25 58.952' N	8005.100' W	105	10/3/1985
E	Tenneco	(Deep) Oil Rig Legs	25 58.890' N	80 04.798' W	190	10/3/1985
B	Tote Machines	160 pieces of steel	14271.6	62096.4	200	1986
D	Tracor Drydock	200' Steel Drydock	26 06.765' N	80 04.233' W	220	6/22/1982

C2	Ken Vitale	formerly "Tracy"; 132' oil rig supply boat	26 09.559' N	8004.763 W	70	3/2/1999
C	Trio Bravo	140' Steel Tugboat	26 08.727' N	80 04.293' W	145	12/14/1982
.	USS Memphis Mitigation	Reef Balls	26 03.2603' N	80 05.7818' W	40	2001
.	USS Memphis Mitigation	Ajacks	26 03.2243' N	80 05.8197' W	40	2001
.	USS Memphis Mitigation	Warren Modules	26 03.1750' N	80 05.8225' W	40	2001
.	USS Memphis Mitigation	Limestone boulders	26 03.1390' N	80 05.8302' W	40	2001
C	Wendy Rossheim	118' DeFoe Christmaster built (1945) as patrol boat	26 09.183 N	80 04.8205 W	65	12/26/1991

#### Artificial Reefs in Site A

#### GPS LAT-LONG COORDINATES

(D) Indicates Differential GPS

(L) Indicates Loran C Positions

Reef Name/Description	Latitude	Longitude	Depth/ Year
Ancient Mariner : Former 165' USCG Cutter Nemesis (part of Berry Patch)	N 26· 18.117'	W 80· 03.745'	70' - 6/9/91
Berry Patch : 65' Tug boat & 3 other vessels	N26· 18.117'	W80· 03.745'	65' - 8/15/87
Chuck-A-Luck : 50' Steel House Boat (Part of Berry Patch)	N26· 18.117'	W80· 03.745'	70' - 9/12/89
Deerfield Pier	N	W	67' - 1992
Hydro Atlantic : 300' Dredge (not an A.R.)	N26· 19.5000'	W80· 03.043'	184' - 12/7/87
Noula Express : 114' Danish Freighter	N 26· 19.278'	W 80· 03.448'	71' - 10/18/91
Pennels Reef: Dredge Pontoon	N26· 19.180'	W80· 04.080'	30' - 12/30/93

#### Artificial Reefs in Site B

#### GPS LAT-LONG COORDINATES

(D) Indicates Differential GPS

(L) Indicates Loran C Positions

Reef Name/Description	Latitude	Longitude	Depth/ Year
Corey and Chris:180' Army Dredge Trident (D)	N 26· 13.863'	W 80· 03.432'	244' - 5/18/86

ALPHA : 85' Riveted Schooner (Rodeo Divers Reef)	N26· 13.857'	W80· 04.027'	78' - 2/28/88
Boating Magazine/Wildlife Forever : Former 150' Dredge Dewitt Clinton (D)	N 26· 14.056'	W 80· 03.666'	156' - 4/29/95
Buddy Merrit: 80' Barge & Welded Yacht cradles	N 26· 14.15'	W 80· 03.36'	414' - 12/17/87
Caicos Express : 185' Dutch Freighter	N 26· 12.502'	W 80· 03.663'	240' - 11/12/85
Capt. Dan Garnsey : Former Mission Ship & 175' USCG Bouy Tender Holly-Hock (D)	N 26· 13.857'	W80· 03.960'	109' - 2/20/90
Chevron / Rodeo : 39 Service Fuel Tanks (L)	14271.3	62097.1	170' - 12/83
Fishamerica/Jim Torgerson : Former RSB-1 160' Navy work boat (D)	N 26· 13.642'	W 80· 03.896'	115' - 4/23/94
Guy Harvey : 185' Haitian freighter, former M/V Lady Kimberly Built in Holland 1957 (D)	N 26· 12.655'	W 80· 03.946'	135' - 5/10/97
Imor : 85' Polish Trawler	N 26· 13.048'	W 80· 03.760'	165' - 8/3/91
Jay Dorman :130' English Schooner (Part of Rodeo Divers Reef) (D)	N 26· 13.857'	W 80· 04.027'	78' - 2/28/88
Johnny Morris Offshore Angler : 237' German Freighter, M/V Sucre Built in 1957 (D)	N 26· 14.3827'	W 80· 03.4113'	215' - 4/27/96
Kornahrens : 1800 Tons of Navy Subnetting	N26· 12.48'	W80· 03.19'	140' - 12/31/90
Lowrance : 435' Canadian Freighter	N26· 13.202'	W80· 03.640'	200' - 3/31/84
Mako : Numerous Mako Hull Molds (L)	14272	62096.2	240' - 1986
Mariner I : Former Union Express 170' German Freighter	N26· 14.42'	W 80· 03.51'	108' - 4/25/92
Mariner II :110' Tug Boat "Mary St. Philip" and 130' Barge	N26· 14.11'	W80· 03.807'	110' - 5/1/93
Miller Lite : Former 186' German Freighter Principe Maya	N 26· 14.207'	W 80· 03.677'	155' - 5/17/87
Papa's Reef : Former Ebbtide 170' Holland Freighter	N 26· 14.102'	W 80· 03.383'	260' - 5/14/89
Qualmann Tugs:Part of Rodeo Divers Reef	N26· 13.857'	W80· 04.027'	78' - 2/28/88
Renegade : 150' Dutch Coastal Freighter	N 26· 13.360'	W 80· 03.620'	190' - 7/10/85
Rodeo 25" : 215' Freighter Built in Amsterdam in 1956 Former Windward Trader	N 26· 13.878'	W 80· 03.813'	122' - 5/12/90
Ronald B. Johnson : 226' Bulk Carrier Built in Holland in 1955. Former OTTO	N 26· 13.880'	W 80· 03.445'	230' - 5/15/88

Tote Machines: 160 pieces of steel (L)

14271.6

62096.4

200' - 1986

## Artificial Reefs in Site C

## GPS LAT-LONG COORDINATES

(D) Indicates Differential GPS

(L) Indicates Loran C Positions

Reef Name/Description	Latitude	Longitude	Depth/ Year
Jim Atria : 240' Freighter	N 26. 09.870'	W 80. 04.225'	112' - 9/23/87
Bill Boyd : 211' Dutch Freighter	N 26. 09.088'	W 80. 03.842'	265' - 7/18/86
Bruce Mueller :By Laud. Billfish Tournament 1955 steel Chris Craft (D)	N 26. 10.1162'	W 80. 04.7057'	45' - 2/10/96
Bud Krohn : Former 183' Spanish Freighter Argo Trader (L)	14269.8	62095.4	440' - 12/3/89
Chevron 1" : 12 Service Station Fuel Tanks	N 26. 07.40'	W 80. 04.55'	73' - 12/83
Chevron 2" : 15 Service Station Fuel Tanks (Part of Grouper Grotto)	N26. 08.382'	W80. 04.328'	150' - 12/83
Chevron 3" : Service Station Fuel Tanks	N26. 08.09'	W80. 04.10'	190' - 12/83
Chris Coffman Reefball Memorial Reefö: 11Reefballs	N26. 07.53'	W80. 04.40'	22' - 8/1/96
Corky M : 41' steel hulled sail boat. Former Sea Bear (D)	N 26. 10.085'	W 80. 04.709'	65' - 4/8/97
D.N.R. Barge Pieces : (part of Hog Heaven)	N26. 08.557'	W80. 04.637'	70' - 1982
Eagle Scout Reef : 24 Reef Balls (D)	N26. 07.4962'	W80. 05.8890'	22' - 8/25/95
Florida League of Anglers (F.L.A) : 144' Navy Minesweeper	N26. 10.15'	W80. 03.36'	388' - 7/8/86
Fort Lauderdale Billfish Tournament/ Bruce Mueller Memorial: 45' Chris Craft (1955) (D)	N 26. 10.1162'	W 80. 04.7057'	65' - 2/10/96
Great Lakes : pontoons&Pipe (L)	14263.9	62105.1	170' - 12/1/83
Grouper Grotto : 60' Barge,Chevron Fuel Tanks, Dredge Pipe,Concrete Culvert	N 26. 08.382'	W 80. 04.328'	146' - 1983
Harbor Town: Former 95' Sail Boat (Pride) (L)	14265.2	62106.3	70' - 11/21/87
Hog Heaven : Western Barge(180'), 1,200' of Dredge Pipe,Pacific Reef Lighthouse(1/30/89)	N 26. 08.102'	W 80. 04.786'	70' - 9/19/86
House Boat: 70' Steel Houseboat (L)	14263.7	62107	95' - 1974

Jay Scutti : 97' Holland Tug Boat	N 26. 09.520'	W 80. 04.760'	64' - 9/19/86
Mercedes: 190' German Freighter	N 26. 09.370'	W 80. 04.513'	97' - 3/30/85
Merci Jesus: 90' Freighter (D)	N 26. 09.635	W 80. 04.747	72' - 8/11/98
MOONSHOT: 45' Vessel Donated by River Bend Marine(Located East of Harbor Town)			70' -5/6/89
Osborne :Erojack circle (Part of BAR Inc.Reef Program),60'Barge,Tires, concrete culverts (L)	14263.1	62108.2	65' - 1972
Paul Sherman:Former "Salvager 3" 56' Treasure Hunter converted from shrimper (L)	14264.8	62106.6	70' - 8/18/91
Peter B. McAllister: 85' Tug Boat (D)	N26 10.149	W80 04.718	69' - 6/16/98
Pipe &Pontoons: Part of Hog Heaven	N26 08.102'	W80 04.786'	65' - 1988
Powell Barge:DB24 Loaded with cement mixer drums &concrete pilings.	N 26. 07.888'	W 80. 03.445'	314' - 4/10/86
Rebel:150' Norwegian Coastal Freighter	N 26. 10.253'	W 80. 04.332'	110' - 7/16/85
Reef Balls (Deep): Prefabricated Concrete (D)	N26. 07.807'	W80. 04.390'	144' - 4/29/95
Reef Balls (Shallow): Prefabricated Concrete	N26. 07.53'	W80. 04.40'	23'- 3/21-22/95
Reuben Reef:PVC Structure, Tote Machine (L)	14262.5	62109	70' - 1/22/86
Robert Edmister : Former 95' USCG Cutter "Cape Gull" (D)	N 26. 09.193'	W 80. 04.837'	70' - 12/11/89
Spaghetti Barge: Barge,Small vessels (L)	14263.7	62106.7	105' - 1972
Trio Bravo : 140' Steel Tugboat	N 26. 08.727'	W 80. 04.293'	145' - 12/14/82
Wendy Rossheim : 118' DeFoe Christmaster intended as patrol boat	N 26. 09.183'	W80. 04.8205'	65' - 12/26/91

#### Artificial Reefs in Site D

#### GPS LAT-LONG COORDINATES

(D) Indicates Differential GPS

(L) Indicates Loran C Positions

Reef Name/Description	Latitude	Longitude	Depth/ Year
N.S.W.C. Cable Spools :	N26. 10.49'	W80. 03.22'	150' - 10/18/91
"AFDL- 8" : Floating NAVY Drydock (L)	14261.2	62107.4	220' - 6/22/82
Chris Craft Molds (L)	14261.4	62107.2	70' - 1978

F.A.D.: Nova Midwater Kites (L)	14262	62107.2	110' - 1982
Joe's Nightmare : 90'x 30' steel barge (D)	N 26· 06.8016'	W 80· 04.2248'	217' - 10/22/96
Marriot : 94 ft. DC-4 Airplane (L)	14261.4	62109.8	71' - 11/26/85
Monomy : 82' Yacht (L)	14263.2	62107.5	60' - 1970
N.S.W.C Sea Con Reef : 2 Acoustic Arrays and concrete (D)	N26· 00.6012'	W80· 05.6241'	74' - 5/14/93
Port Everglades Reef: Concrete Piers	N26· 06.76'	W80· 04.04'	150' - 1/31/89
TE AMO : 105' Sail Boat (L)	14261.8	62106.6	215' - 1985
Tracor Drydock : 200' Steel Drydock	N 26· 06.765'	W 80· 04.233'	220' - 6/22/82