

# Annual Report 2017

## Community Partnerships Division



*Together with Community Partners,  
Broward Residents THRIVE*

# Our Focus

Community Partnerships is a Division of the Broward County Human Services Department.

In Fiscal Year 2017, the Division planned, coordinated, & managed partnerships to support the community with resources through the following sections:



## Child Care Licensing & Enforcement

Licenses, registers, monitors and regulates all commercial and residential childcare facilities for compliance with state and county rules and regulations.



## Health Care Services

Provides contracted health care services to Broward residents. Additionally, administers the Ryan White Part A Program for HIV-positive residents which provides critical health and support services focusing on improving their health outcomes.



## Children Services Administration

Focuses on improving the quality of life of children of all ages and their families by managing contracts awarded to community partners to provide intervention programs and supporting systems of care.



## Nancy J. Cotterman Center

Offers 24/7 certified and accredited support and intervention services for victims of sexual assault and child abuse and their non-offending family members.



## Homeless Initiative Partnership

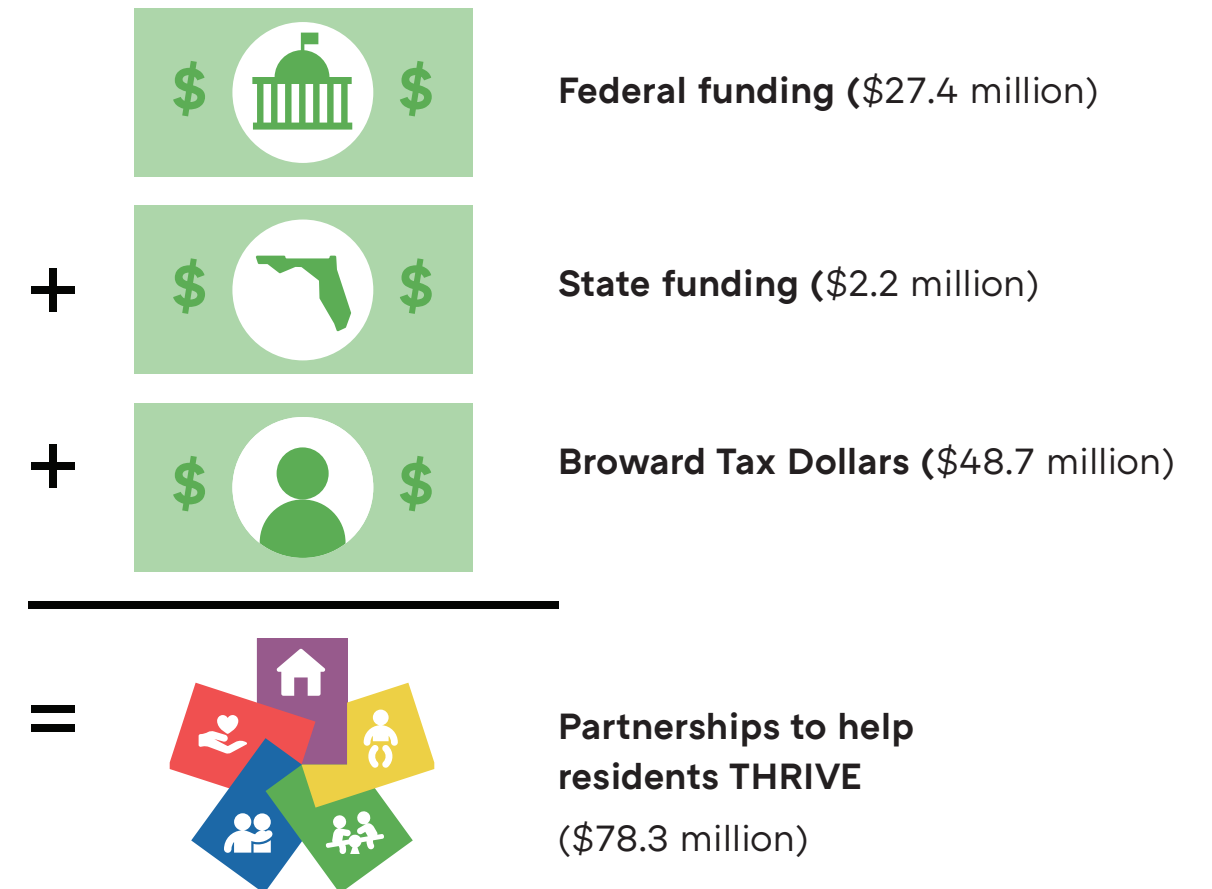
Manages the Continuum of Care through planned activities and contracted services with community providers. These services support strategies to end homelessness by focusing on self-sufficiency and placement in permanent housing.

# How does it happen?

Throughout the year, requests for grant proposals are advertised to fund agencies to provide services that:

- 1 Promote**  
self-sufficiency
- 2 Improve**  
well-being of the community
- 3 Enhance**  
the quality of life for residents
- 4 Collaborate**  
with all kinds of community partners
- 5 Integrate**  
health & human services programs

A combination of funds from the federal & state government along with Broward tax-payer dollars makes it all happen.



# Child Care Licensing & Enforcement

Child Care Licensing and Enforcement (CCLE) keeps children safe by:

**Licensing & Registering**  
child care sites

**Reviewing**  
child care sites annual applications for approval

**Inspecting**  
child care sites every year

## Making a difference in the community

CCLE closely monitors child care sites through inspections three times a year to ensure health and safety standards are met.

Young children get plenty of physical activity because CCLE has increased the physical activity standards.

Due to CCLE food inspections and nutrition standards, children are exposed to good nutrition and cared for in sanitary conditions.



**FIND A LICENSED CHILD CARE SITE NEAR YOU:**  
[Cares.myFLfamilies.com/PublicSearch](https://Cares.myFLfamilies.com/PublicSearch)

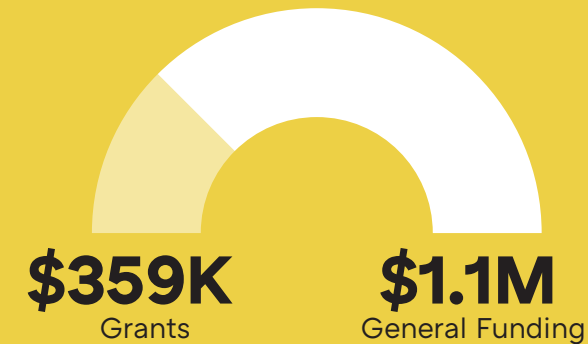
up to **95,000**

**CHILDREN IN 825 REGULATED CHILD CARE ARRANGEMENTS**

(Licensed Facilities, Licensed Family Providers & Registered Providers)



CCLE Fiscal Year 2017 Budget



## COMMUNITY IMPACT

**100%**

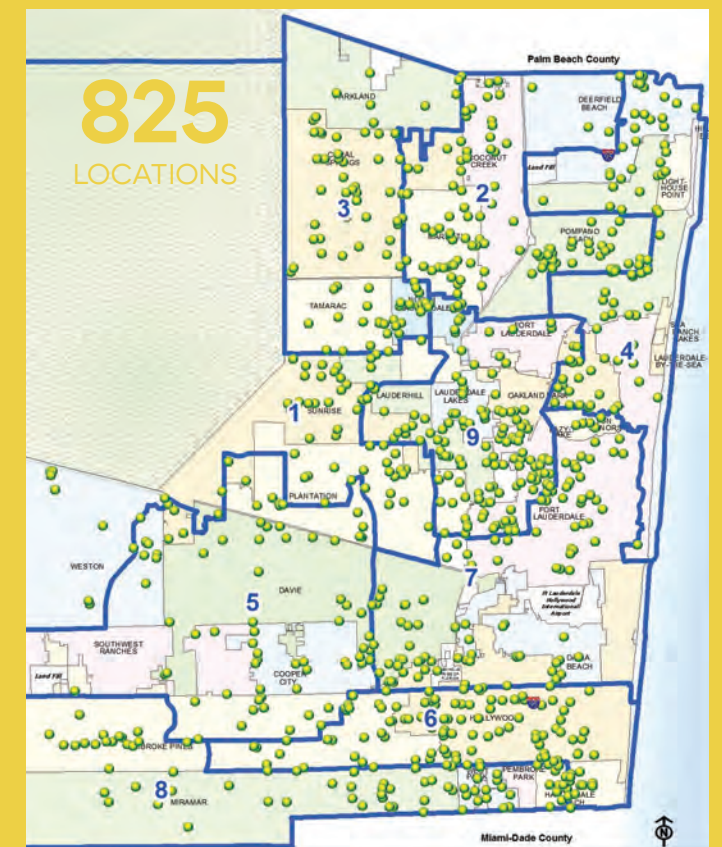
LICENSED CHILD CARE SITES INSPECTED

**3,062**

CHILD CARE INSPECTIONS



LICENSED AND REGISTERED CHILD CARE SITES



# Health Care Services

Partnering with the Broward hospital districts, Federally Qualified Health Centers, and community health providers, Health Care Services (HCS) Section manages contracts dedicated to the highest quality, consumer-friendly health care and mental health, and special health needs to:

## Empower

clients to be proactive in living a healthy lifestyle

## Integrate

the latest standards of care & guidelines

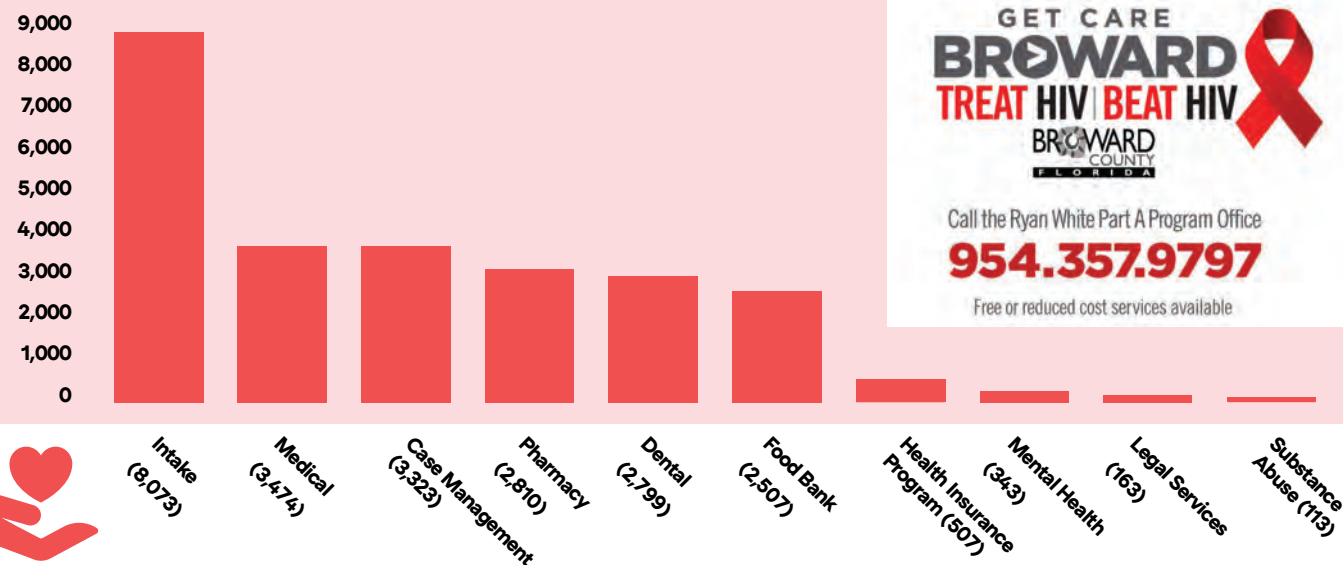
## Assist

clients in establishing & maintaining self-sufficiency

## Ryan White Part A Program

With \$16 million Part A funding awarded from the Health Resources and Services Administration. Partnered with the Florida Health Department in Broward County and other agencies, Ryan White Program is finding innovative strategies to deliver quality healthcare, helping people gain access to and payment for treatment and support services. Clients in treatment can lower their viral load to an undetectable level and are unlikely to transmit HIV to others.

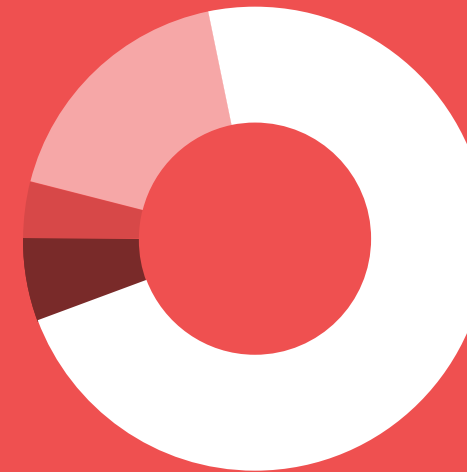
### Ryan White Part A Services for 8,124 HIV/AIDS Clients



GET CARE  
**BROWARD**  
**TREAT HIV BEAT HIV**  
 BROWARD COUNTY FLORIDA  
 Call the Ryan White Part A Program Office  
**954.357.9797**  
 Free or reduced cost services available

## Health Care Services Funding

FY17 Budget: \$20,191,898



- Primary Care (72%)
- Mental Health Care (17%)
- Special Health Care (4%)
- Local Match (5%)

## FY 2017 Clients Served



- Primary Care (93%)
- Mental Health Care (6%)
- Special Health Care (1%)



## Virally Suppressed Client Rates

(Low Viral Load)

Ryan White Part A  
Broward's Average

Florida's Average

**84%**

**63%**

## COMMUNITY IMPACT

**60%**

OF CLIENTS MANAGE THEIR HYPERTENSION BELOW 140/90MM HG

**68%**

OF CLIENTS MANAGE THEIR DIABETES A1C LEVELS (LESS THAN 8%)

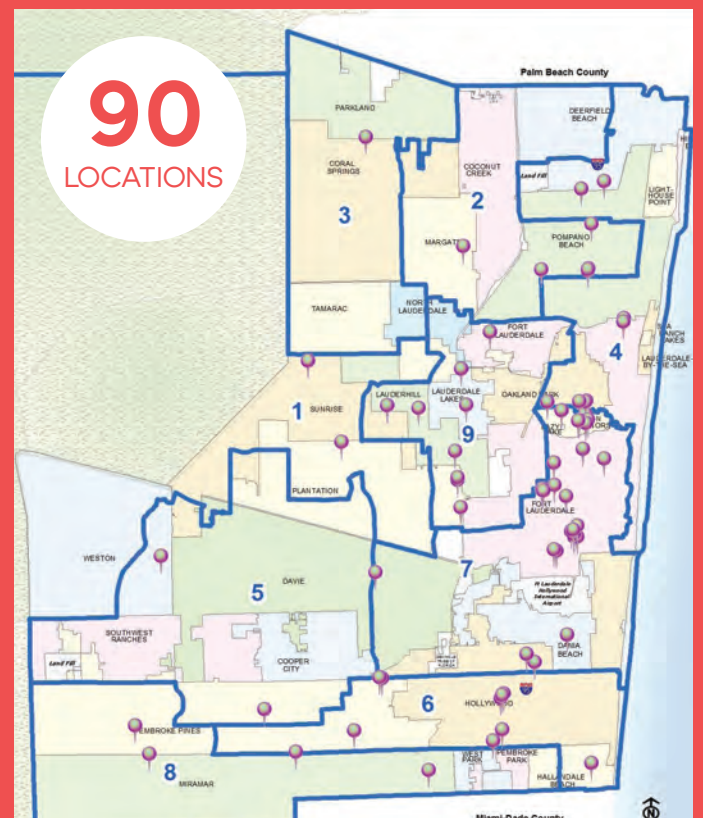
**100%**

OF BABIES BORN LIVED TO THE AGE OF ONE

**99%**

OF CLIENTS ARE NOT RE-ADMITTED FOR CRISIS/ EMERGENCY WITHIN 90 DAYS OF DISCHARGE

## FUNDED COMMUNITY PARTNERS\*



\*Home-based services provided countywide

# Children Services Administration

The Children Services Administration Section (CSAS) provides leadership in planning efforts with recommendations from the Children's Services Advisory Board to provide community services to children of all ages. Without Children Services funding, our families would be exposed to higher levels of stress, costly out-of-home placement, and an increased risk of child abuse and neglect.

During this year, \$1.4 million grants were awarded to Broward County for the Edward Byrne Memorial Justice Assistance Grant (BYRNE/JAG) and the One Community Partnership 2 (OPC2). The Byrne/JAG program focuses on working with children at risk or involved with the Juvenile Justice system. Meanwhile OPC2 focuses on enhancing services to children transitioning to adulthood to achieve resiliency, recovery, and wellness.

## Special Needs

Children and families receive respite, rehabilitative therapies and advocacy training.

## Child Care

Providing families daycare slots in licensed childcare to meet the child's developmental needs, the state also provides additional funding.

## Behavioral Health

Helping children and families with behavioral health problems improve and remain in the community.

## Independent Living

Life skills training and support to help youth to live independently while pursuing educational training or as they enter the workforce.

## Client Success

**Situation:** Natasha, 18 yrs. old, homeless, no custody of child, needing medication

**Result:** After linking with the OCP2 Transition to Independence Process services and wellness coach, Natasha is...

- living on her own with keys to her own place
- stable on medications
- enrolled in school to complete her high school diploma
- Working toward reuniting with her son



## CSAS Fiscal Year 17 Funding

Funded with \$15 million



- Behavioral Health (53%)
- Special Needs (28%)
- Child Care (16%)
- Independent Living (3%)

## Clients by Service

10,669 children served



- Behavioral Health (61%)
- Special Needs (29%)
- Subsidized Child Care (9%)
- Independent Living (1%)

## COMMUNITY IMPACT

# 97%

OF CLIENTS REMAINED ACTIVELY IN THE COMMUNITY AFTER COMPLETING THE PROGRAM

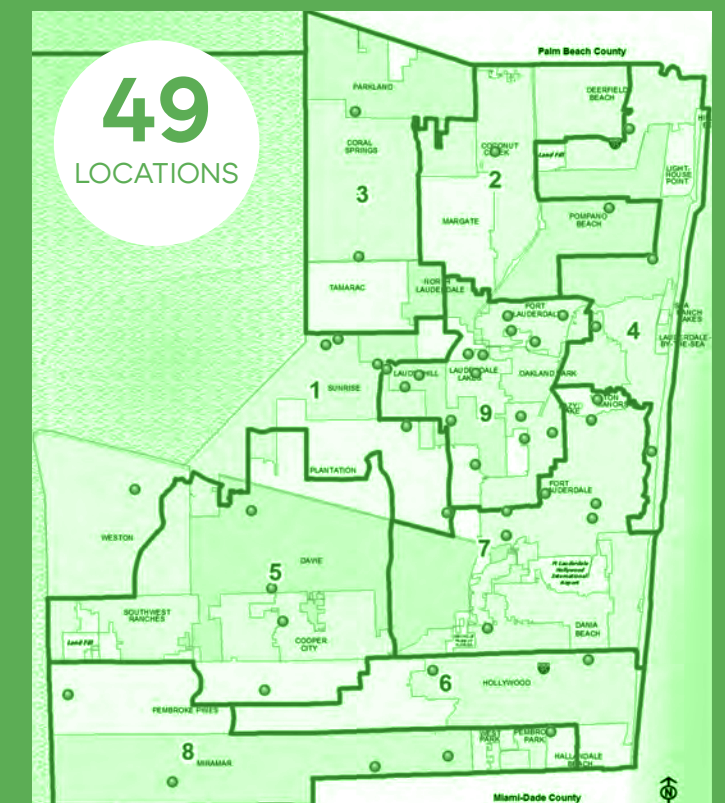
# 88%

OF CLIENTS REDUCED OR ELIMINATED DRUG AND ALCOHOL ABUSE

# 99%

OF CLIENTS MAINTAIN OR IMPROVE DEVELOPMENTAL FUNCTIONING

## FUNDED COMMUNITY PARTNERS\*



\*Home-based services provided countywide

# Nancy J. Cotterman Center

Since 1977, the Nancy J. Cotterman Center (NJCC) is a healing place for victims of sexual violence and physical abuse, recognized as Broward County's only Rape Crisis and Accredited Children's Advocacy Center. Conducting forensically sensitive interventions and partnering with other community partners.

## Child Protection Team

Collaborates with Broward Sheriff's Office on investigations of child abuse by conducting medical exams, family assessments, and more.

## Counseling

Offers quality mental health services for victims of abuse or sexual assault and their families.

## Crisis Unit

Provides Crisis Counseling 24/7 for victims of sexual assault and survivors of child abuse while being the liaison between law enforcement to conduct forensic medical exams and collect evidence.



## All Services are:

- Private & Confidential
- English, Spanish, and Creole available
- **FREE OF CHARGE** for everyone



**954-761-RAPE (7273)**

SERVED MORE THAN

# 4,500

VICTIMS OF ABUSE/ASSAULT



## NJCC Budget FY 2017

A combination of County, Department of Health & other grants

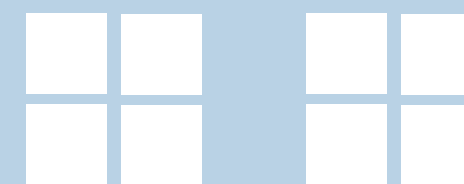
- General Fund (50%)
- Department of Health Grant (35%)
- Grants/Other (15%)

## SPEAK OUT FOR OUR CHILDREN

Come let us gather together.  
Come let us speak now as one.  
Speak for the rights of the children.  
Speak out the needs to be done.  
Speak for the hearts that are hungry.  
Speak for the hearts that are sad.  
Speak for each child a beginning  
That futures a heart ever glad.

Speak for a world where the children  
Come first in each thought and each plan.  
Speak for a world where the children  
Have rights - no matter the land.

Come, let us ring out our voices,  
Come, stand together and say  
Each child has the right to a future!  
Each voice can help light the way!



Jean Warren © Warren Publishing House

## COMMUNITY IMPACT

# 99%

OF CLIENTS ACHIEVE AT LEAST ONE GOAL AFTER ATTENDING 3 OR MORE SESSIONS

# 76%

OF CLIENTS REDUCED ABUSE SYMPTOMS AFTER COMPLETING COUNSELING SESSIONS

# 96%

OF MEDICAL EXAM REPORTS ARE SHARED WITH THE CHILD PROTECTION TEAM WITHIN 10 DAYS TO COMPLETE THE CHILD ABUSE INVESTIGATIONS

# Homeless Initiative Partnership

Homeless Initiative Partnership Section (HIP) is the designated lead agency for the Broward County Homeless Continuum of Care (CoC) Board. The CoC is the County's focal point for planning and coordinating services for homeless families and individuals. Homelessness and poverty are inextricably linked. A lack of affordable housing, limited behavioral health services and the limited scale of housing assistance programs have contributed to the current housing crisis and homelessness.

In 2017, HIP managed \$21.6 million in homeless services through 16 community agencies.

Coordinated Assessment, Street Outreach, Emergency Crisis

Shelter, Supportive Services, Behavioral Health Safe Haven, Transitional Housing

Legal service for individuals experiencing homelessness, annual Point in Time Count Coordination

## Landlord Recruitment Initiative

Be part of the solution by leasing to individuals & families experiencing homelessness.

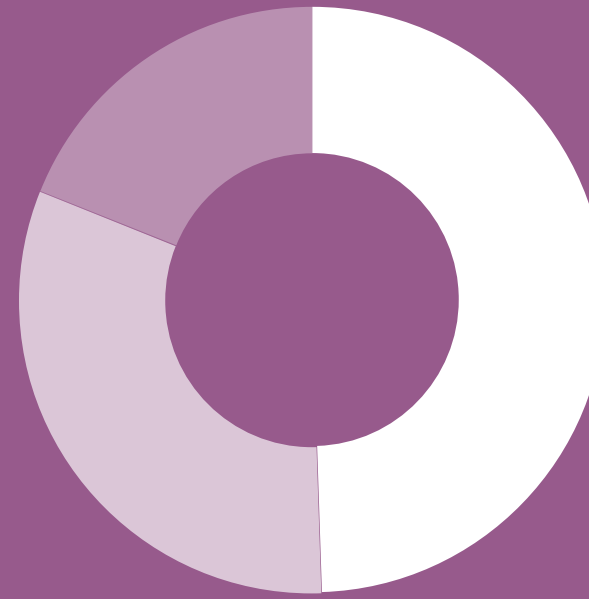
For more info, email [HomelessInitiativePartnership@Broward.org](mailto:HomelessInitiativePartnership@Broward.org)  
Call (954) 357-6101



Call 954-563-4357 if you or someone you know are experiencing homelessness.

### 2017 Annual Point in Time Count\*

3,031 people experiencing homelessness



- Sheltered Homeless (49%)
- Unsheltered Homeless (32%)
- Chronically Homeless (19%)

### Fiscal Year 2017 Funding

Funded with \$21.6 million



- General Fund (58%)
- Federal Grant (39%)
- State Grant (3%)

\*This information is reported to the federal funder and is used to allocate local resources.

## COMMUNITY IMPACT

96%

OF CLIENTS REMAIN IN PERMANENT HOUSING 6 MONTHS AFTER EXITING THE PROGRAM

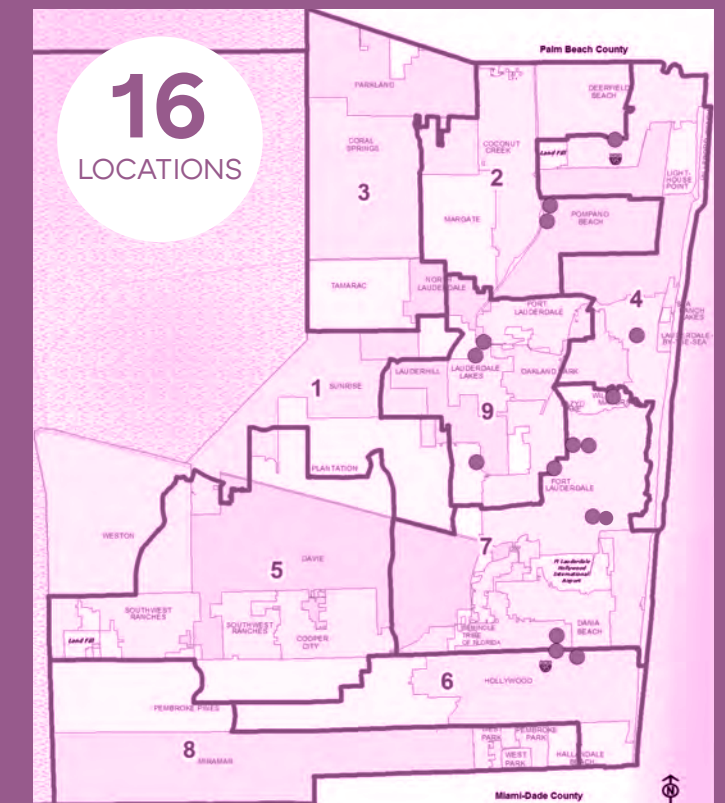
100%

OF DOMESTIC VIOLENCE VICTIMS OBTAIN SAFE, SUPPORTIVE EMERGENCY SHELTER

83%

OF CLIENTS EXIT TRANSITIONAL HOUSING TO PERMANENT HOUSING

### FUNDED COMMUNITY PARTNERS\*\*



\*\*Community-based services provided countywide

# Top 5 Things To Know

- 1** *Your tax dollars help your child with behavioral problems to get on track with school.*
- 2** *Everyone can receive primary and mental health services.*
- 3** *You can get help with permanent housing and get back on your feet.*
- 4** *We are a safe place to talk about sexual assault and HIV/AIDS.*
- 5** *All Child Care center inspections can be found online.*

## To be a Funded Community Partner



Learn about funding opportunities to provide services that improve our community and the lives of Broward residents by visiting:

[Broward.org/HumanServices/CommunityPartnerships/Pages/FundingOpportunities.aspx](http://Broward.org/HumanServices/CommunityPartnerships/Pages/FundingOpportunities.aspx)

# A Special Thank You

*Our community is thriving because of all our Community Partners! Thank you for your passion and dedication to improving the lives of our residents.*



2-1-1 Broward  
AIDS Healthcare Foundation  
Arc Broward  
Boys and Girls Club of Broward County  
Broward Behavioral Health Coalition  
Broward Children's Center  
Broward College  
Broward Community & Family Health Centers  
Broward County (Family Success Administration Division)  
Broward Health  
Broward Housing Solutions  
Broward County Housing Authority  
Broward House  
Broward Partnership for the Homeless  
Broward Regional Health Planning Council  
Camelot Community Care  
Care Resource Community Health Centers  
Catholic Charities of the Archdiocese of Miami  
Center for Hearing and Communication  
Children's Diagnostic & Treatment Center  
City of Fort Lauderdale  
Covenant House Florida  
Florida Department of Health in Broward County  
Florida Mental Health Association of Broward County  
Harmony Development Center  
Healthy Mothers/Healthy Babies Coalition of Broward County  
Henderson Behavioral Health

Hope South Florida  
JAFCO  
Kids in Distress  
Latinos Salud  
Legal Aid Service of Broward County  
Lighthouse of Broward County  
Lutheran Services  
Memorial Healthcare System  
Miami Rescue Mission d/b/a Broward Outreach Center  
North Broward Hospital District  
Nova Southeastern University  
Parent to Parent  
Positive Outcomes  
Poverello Center  
Ronik & Radliauer Group  
School Board of Broward County  
Smith Mental Health Associates  
SunServe  
St. Laurence Chapel  
TaskForce For Ending Homelessness  
The Business and Leadership Institute for Early Learning  
The Salvation Army  
The Poverello Center  
United Community Options of Broward, Palm Beach and Mid-Coast Counties  
Volunteers of America of Florida, Inc.  
Women in Distress of Broward County



---

115 S. Andrews Avenue, Room A-370, Fort Lauderdale, FL 33301  
Office: 954-357-8647 • Fax: 954-357-8204 • Hearing Impaired/TTY: 954-537-2882  
CommunityPartnerships@Broward.org

[Broward.org/HumanServices/CommunityPartnerships](http://Broward.org/HumanServices/CommunityPartnerships)

---

