

**Locator
Map**



2000 Bond Acquired Sites

-  Conservation Land
-  Green Space
-  Open Space
-  Purchase Dvlmpt Rights



F
**Natural Resources
Planning and Management
Division**

This map is for planning or illustration purposes only.
For Information contact:
Land Stewardship Program
(954-519-1436).
LAST UPDATE: June 2012.

1 inch = 37 feet

Locator
Map



2000 Bond Acquired Sites

-  Conservation Land
-  Green Space
-  Open Space
-  Purchase Dvlmpt Rights

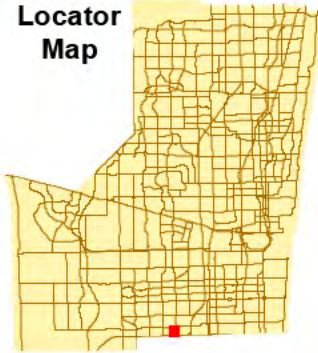


F
**Natural Resources
Planning and Management
Division**

This map is for planning or illustration purposes only.
For Information contact:
Land Stewardship Program
(954-519-1436).
LAST UPDATE: June 2012.

1 inch = 33 feet

Locator Map



2000 Bond Acquired Sites

- Conservation Land
- Green Space
- Open Space
- Purchase Dvlmpt Rights



F
Natural Resources
Planning and Management
Division

This map is for planning or illustration purposes only.
For Information contact:
Land Stewardship Program
(954-519-1436).
LAST UPDATE: June 2012.

1 inch = 216 feet

Locator Map



2000 Bond Acquired Sites

- Conservation Land
- Green Space
- Open Space
- Purchase Dvlmpt Rights



Miramar Pineland
Natural Area;
Total Acres 19.79

Miramar Pineland
Natural Area parcel
east; Total Acres 25.27

S UNIVERSITY DR
RIVIERA BLVD

HOMESTEAD TPKE EXT RAMP

UNIVERSITY DR RAMP

HOMESTEAD TPKE EXT

HOMESTEAD TPKE EXT

1 inch = 214 feet

F

**Natural Resources
Planning and Management
Division**

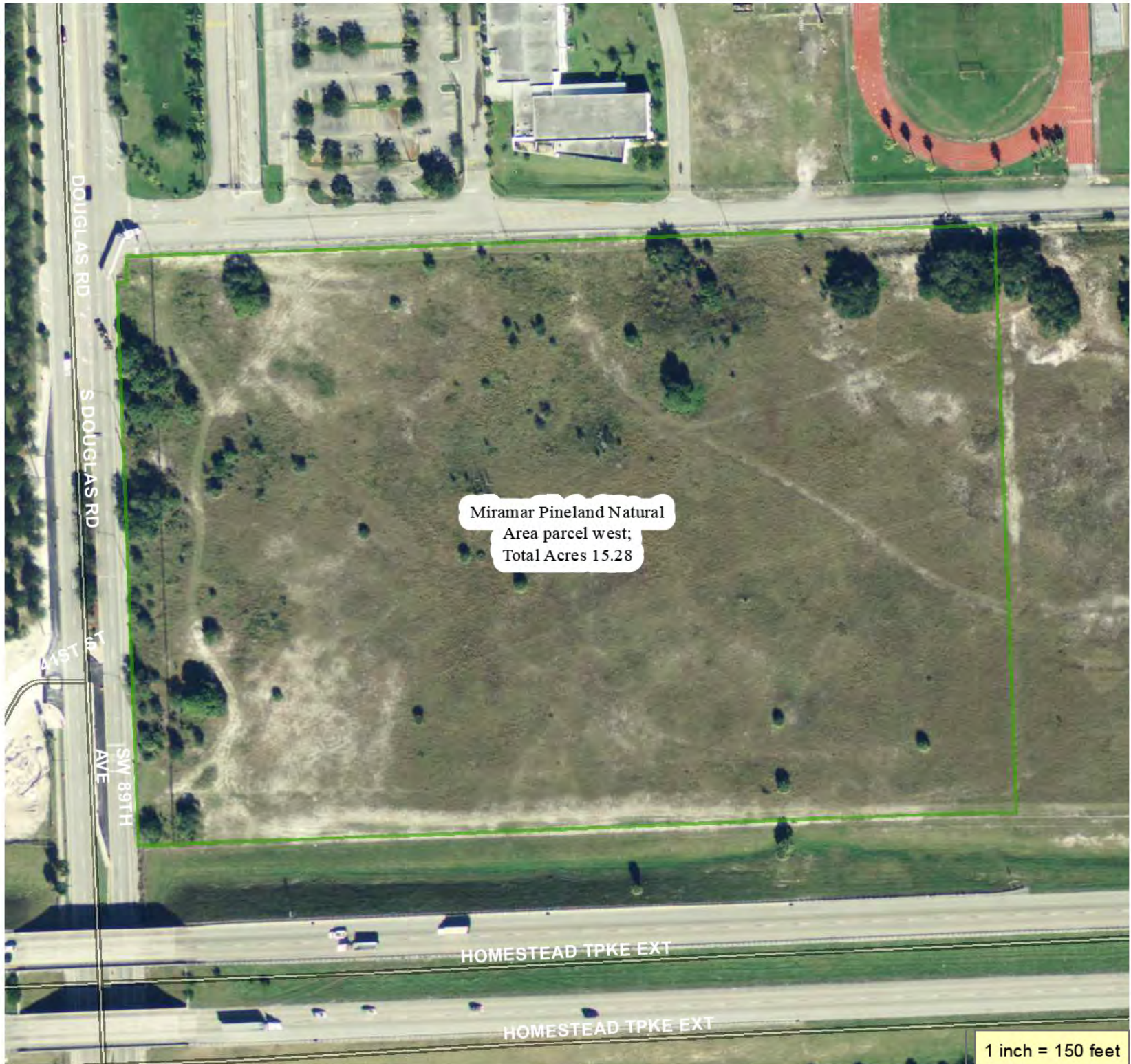
This map is for planning or illustration purposes only.
For Information contact:
Land Stewardship Program
(954-519-1436).
LAST UPDATE: June 2012.

Locator Map



2000 Bond Acquired Sites

- Conservation Land
- Green Space
- Open Space
- Purchase Dvlmpt Rights



Miramar Pineland Natural Area parcel west;
Total Acres 15.28

F
Natural Resources Planning and Management Division

This map is for planning or illustration purposes only.
For Information contact:
Land Stewardship Program
(954-519-1436).
LAST UPDATE: June 2012.

1 inch = 150 feet