

BROWARD-by-the-NUMBERS

An Overview of Characteristics of Poverty in Broward County

Broward is an affluent county, which has pockets in which conditions of poverty are concentrated; one-in-ten residents is poor, including more than 58,000 children and 25,000 seniors. Most poor families have at least one working adult.

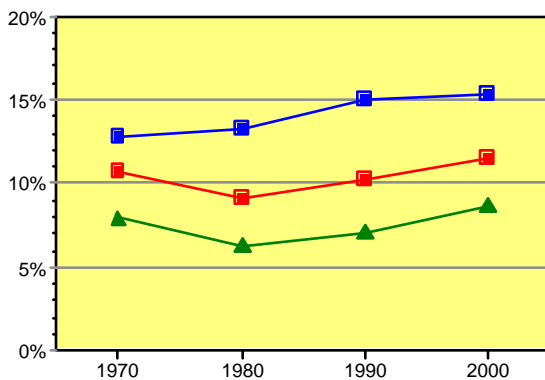
Countywide Poverty

Poverty levels are defined nationally by U.S. Bureau of the Census by family size and composition. In 2000, the poverty threshold for a family of four with two children was an annual income of \$17,463; for a single parent with two children it was \$13,874, and for a single person aged 65 and over it was \$8,259. Poverty data in each decennial census are based on income from the previous year (i.e. Census 2000 shows income from 1999).

According to the Census 2000, 184,589 Broward County residents live below the poverty level. Broward County's poverty rate was 11.5%, which is lower than the statewide average of 12.5% and the national average of 12.4%. Miami-Dade and Palm Beach counties had poverty rates of 18.0% and 9.9% respectively.

Change in Poverty Rates Since 1970

There has been a steady increase in individual and family poverty rates since 1980 in Broward County.

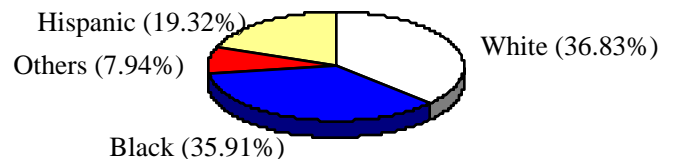
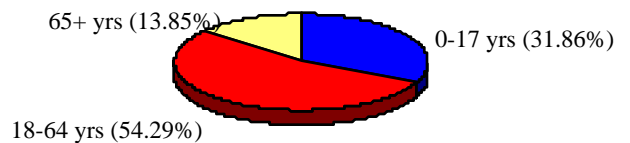


■ Individuals ▲ Families
■ Children (Aged 0-17)

Who Are the Poor?

A disproportionate number of poor residents are children. According to Census 2000, 58,815 persons below poverty are also aged under-18 years: that is 31.9%. By comparison, countywide only 23.6% of the population is under-18. One-in-seven children lives in poverty in Broward County.

The Census also showed 25,558 seniors aged 65+ years are below poverty. This represents one tenth of the total senior population in Broward County.



In 2000, persons below poverty included 67,977 White Non-Hispanics, 66,292 Black/African-Americans, and 35,664 Hispanics.

One quarter of residents below the poverty level have a disability: that is 45,143 persons, including 2,408 aged 5 to 15 years and 12,358 aged 65 and over.

Families in Poverty and the Working Poor

In 2000, 8.7% of Broward County families were in poverty. Since 1990, the total number of families living in the County has grown by 22%. However, the number of families in poverty has increased by 50% (from 24,030 to 35,964), which is more than twice the overall growth rate.

Families with children have a higher than average poverty rate (13.8% in 2000). This is reflective of the relatively large number of children living in poverty. In 2000, 26,534 families with children were below the poverty level in Broward County. The majority of these families were headed by single mothers. The highest poverty rate was among single-mothers with pre-school children : 38.2 % below the poverty level.

Family Type	Number of Families Below Poverty Level		Poverty Rate	
	1990	2000	1990	2000
All families	24,030	35,964	7.1%	8.7%
Families with children*:	16,565	26,534	11.6%	13.8%
- Married Couples	5,296	8,450		
- Single Females	9,976	15,243		
- Single Males	1,293	2,841		
Families without children	7,465	9,430	3.8%	4.3%

* Related children aged under 18 years.
Source: U.S. Bureau of Census, 1990 and 2000

The Working Poor

Six percent of families with at least one working adult had a family income below the poverty level. Such families are sometimes subjectively described as the “working poor.” Countywide in 2000, there were 20,498 families with at least one worker below the poverty level, which is more than half of all families in poverty (35,964).

Characteristics Associated with Poverty

Unemployment, poor housing conditions and overcrowding are among the characteristics that are often associated with conditions of poverty. The following list includes some of these statistics for Broward County, taken from the most recent census.

Education: Persons that did not graduate high school	203,234	18.0%
Linguistic Isolation: Persons who do not speak English very well	173,325	11.4%
Unemployment: Persons and percent of labor force	42,833	3.3%
Joblessness: Families with no workers	75,901	18.3%
Overcrowding: Housing units with >1.5 persons per room	22,764	3.5%
Heating: Housing units without heating fuel	19,952	3.0%
Plumbing: Housing units lacking complete plumbing	2,956	0.4%
Car ownership: Households with no auto	61,191	9.4%
Public Assistance: Households receiving public assistance	13,555	2.1%
Cost of Housing: Households paying more than 35% of income for rent or mortgage	140,680	28.2%

Source: U.S. Bureau of Census 2000

Broward-by-the-Numbers is a publication from
Department of Planning and Environmental Protection
Planning Services Division
115 South Andrews Ave., Room 329K
Fort Lauderdale, FL 33301
phone: (954) 357-6612
email: planstats@broward.org
www.broward.org/cnpsd.htm



Broward County Board of County Commissioners
Josephus Eggelton, Jr.
Ben Graber
Sue Gunzburger
Kristin D. Jacobs
Ilene Lieberman
Lori Nance Parrish
John E. Rodstrom, Jr.
James A. Scott
Diana Wasserman-Rubin

TECHNICAL APPENDIX

TABLE 1. Comparative Poverty Rates

	Individual Poverty Rate		Persons Below Poverty Level in 2000	Family Poverty Rate		Families Below Poverty Level in 2000
	1990	2000		1990	2000	
US	13.1%	12.4%	33.89M	10.0%	9.2%	6.62M
State	12.7%	12.5%	1.95M	9.0%	9.0%	383,131
Broward	10.2%	11.5%	184,589	7.1%	8.7%	35,964
Miami-Dade	17.9%	18.0%	396,995	14.2%	14.5%	80,108
Palm Beach	9.3%	9.9%	110,430	6.2%	6.9%	21,045

Source: U.S. Bureau of Census, 1990 and 2000. Data based on income during the previous year.

TABLE 2. Poverty by Race and Ethnicity, 2000

Race/Ethnicity	Persons Below Poverty Level	
White Non-Hispanic	67,977	36.8%
Black Non-Hispanic*	66,292	35.9%
Other Races Non-Hispanic	14,656	7.9
Hispanic	35,664	19.3%
Total	184,589	

* Assumes 2.4% of Black persons below poverty level are Hispanic, consistent with total County population.

Source: U.S. Bureau of the Census, 2000. Data based on income during the previous year.

TABLE 3. Family Poverty, 1990 and 2000

	1990	2000	Change	Growth
All Families	337,284	411,403	74,119	22.0%
.... with related children < 18 years	142,792	191,804	49,012	34.3%
Families w/Female householder, no husband	51,303	81,818	30,515	59.5%
.... with related children < 18 years	30,952	47,190	16,238	52.5%
Families Below Poverty Level in previous year	24,030	35,964	11,934	49.7%
.... with related children < 18 years	16,565	26,534	9,969	60.2%
Families w/Female householder, no husband	11,430	17,158	5,728	50.1%
.... with related children < 18 years	9,976	15,243	5,267	52.8%

Source: US Bureau of Census, 1990 and 2000. Data based on income during the previous year.

TABLE 4. Poverty Thresholds in 2000 by Size of Family and Number of Related Children Under 18 Years (Dollars)

Size of family unit	Weighted average thresholds	Related children under 18 years								
		None	One	Two	Three	Four	Five	Six	Seven	Eight or more
One person	8,794									
Under 65 years	8,959	8,959								
65 years and over	8,259	8,259								
Two persons	11,239									
Householder <65 years	11,590	11,531	11,869							
Householder 65+ years	10,419	10,409	11,824							
Three persons	13,738	13,470	13,861	13,874						
Four persons	17,603	17,761	18,052	17,463	17,524					
Five persons	20,819	21,419	21,731	21,065	20,550	20,236				
Six persons	23,528	24,636	24,734	24,224	23,736	23,009	22,579			
Seven persons	26,754	28,347	28,524	27,914	27,489	26,696	25,772	24,758		
Eight persons	29,701	31,704	31,984	31,408	30,904	30,188	29,279	28,334	28,093	
Nine persons or more	35,060	38,138	38,322	37,813	37,385	36,682	35,716	34,841	34,625	33,291

Source: U.S. Bureau of Census, 2001

For additional information about national poverty thresholds see "Poverty in the United States: 2000," Current Population Report (P60-214) published by U.S. Bureau of Census, September 2001.