



November 19, 2008

NEWS RELEASE

FORT LAUDERDALE-HOLLYWOOD INTERNATIONAL AIRPORT EXPECTING A VERY BUSY THANKSGIVING TRAVEL HOLIDAY

PASSENGERS

More than 400,000 travelers are expected to fly in and out of Fort Lauderdale-Hollywood International Airport during the upcoming Thanksgiving holiday. The holiday period runs from Tuesday, November 25, through Monday, December 1. We anticipate more than 70,000 passengers a day during our peak travel times this Wednesday and Sunday. While we do anticipate that our total passenger numbers will be down slightly over last year, the airport will still be very busy.

PARKING

In addition to our daily parking garages, (\$15.00 a day), conveniently located adjacent to the terminals we have several other parking options this year. The Park-N-Save Lot located west of the airport has 2,800 additional parking spaces for public parking at \$9.00 a day. Shuttle buses run every 15 minutes to bring passengers to and from the terminals. To access the Park-N-Save lot, take Griffin Road just west of I-95 to Ravenswood, turn right, and follow the signs.

WHAT'S NEW?

The parking peak is expected Friday, November 28, with as many as 13,000 vehicles parked throughout the airport lots and garages. If you prefer not to park yourself, follow the signs to valet parking located in the Palm and Hibiscus garages. ***New for Thanksgiving 2008:*** Auto detailing is now available in the Park N Save lot in addition to the detailing services in the valet parking areas in the garages. You can return from your trip to a clean car!

While there will be sufficient parking, it will be on a first-come, first-serve basis. Some of the parking areas will fill-up earlier than others, and travelers should allow extra time to be directed to available parking.

LATEST INFORMATION

Travelers can tune in to the Airport Radio Station, 1670 AM, on the way to the airport to get the most current information on available parking. The station can be received approximately two miles from the Airport or can be listened to on our web site at: www.fll.net.

We remind all passengers to arrive two hours early for domestic flights and three hours early for international flights. Remember the Transportation Security Administration **3-1-1 liquid rules for carry-on's** = 3 ounce bottle or less (by volume); 1 quart-sized, clear, plastic, zip-top bag; 1 bag per passenger placed in screening bin. One-quart bag per person limits the total liquid volume each traveler can bring. Call your airline or check their websites for the latest information on flight status.

For more information please contact:

Greg Meyer, Public Information Officer
Broward County Aviation Department
100 Aviation Boulevard, Fort Lauderdale, Florida 33315
Tel: (954) 359-6116 / Fax: (954) 359-0027

Fort Lauderdale-Hollywood International Airport is a service of the Broward County Board of County Commissioners

G:\MKTPI\News Releases\Thanksgiving Day Parking 2008 NR - 11192008.doc

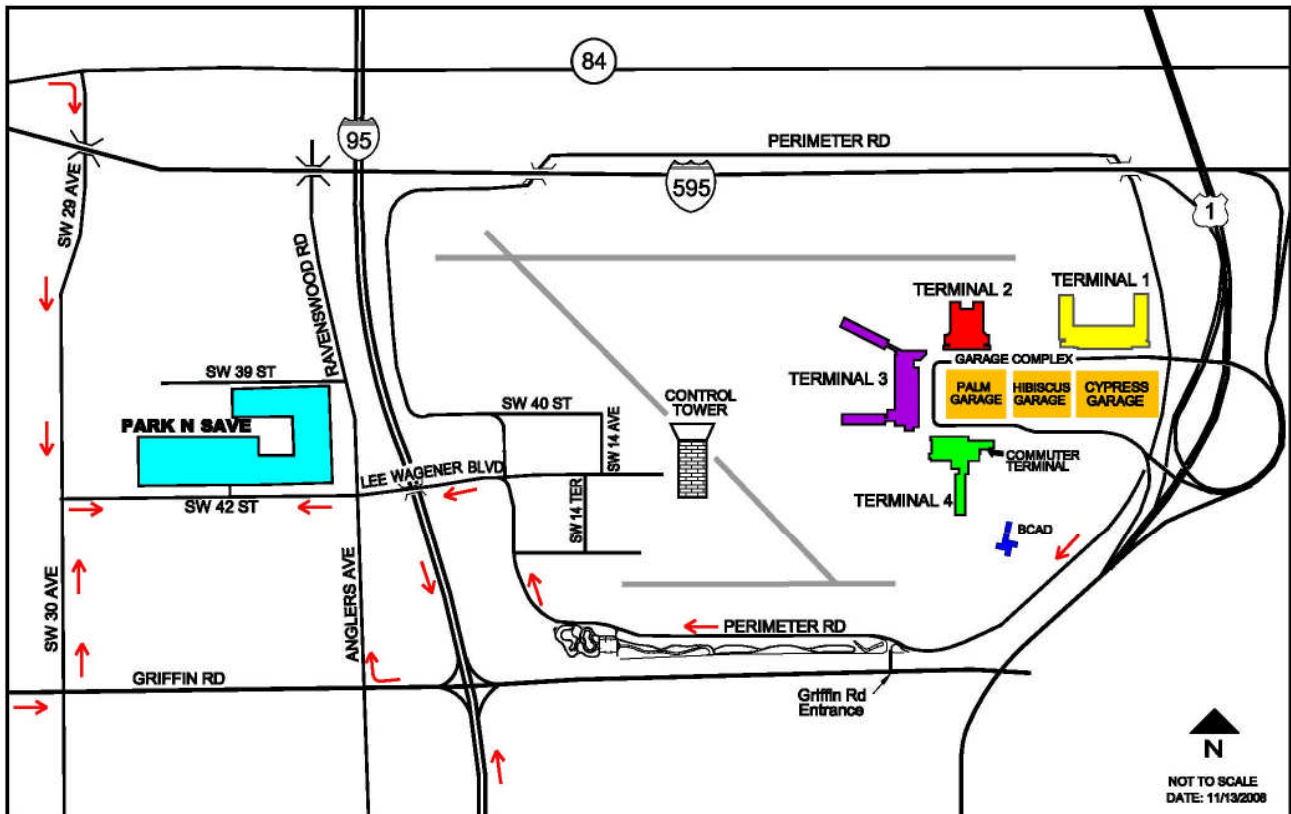
Broward County Board of County Commissioners

Josephus Eggelletion, Jr. • Sue Gunzburger • Kristin D. Jacobs • Ken Keech • Ilene Lieberman • Stacy Ritter • John E. Rodstrom, Jr. • Diana Wasserman-Rubin • Lois Wexler
www.broward.org

THANKSGIVING HOLIDAY TRAVEL TIPS FORT LAUDERDALE-HOLLYWOOD INTERNATIONAL AIRPORT

- For the latest parking information, see electronic signs on the Airport entrance roadway or listen to Airport Information Radio, 1670 AM, within two miles of the Airport. You can also listen to Airport Information Radio on our website: www.fll.net or call (954) 359-0200 for the latest parking information.
- Travelers parking at the Airport should allow an extra time to be directed to available parking.
- Remember to bring a photo ID and keep your bags in your possession at all times.
- Demand for parking will be heavy and will be on a first-come, first-serve basis.

PARK-N-SAVE DIRECTIONAL MAP



PARKING RATES AT FORT LAUDERDALE-HOLLYWOOD INTERNATIONAL AIRPORT:

DAILY PARKING IN THE GARAGE COMPLEX.....	\$1.00 PER 20 MINUTES; MAXIMUM OF \$15.00 DAILY.
HOURLY PARKING IN THE GARAGE COMPLEX	\$1.00 PER 20 MINUTES; MAXIMUM OF \$36.00 DAILY.
VALET PARKING	\$21.00 DAILY.
PARK-N-SAVE	\$9.00 DAILY.

Fort Lauderdale-Hollywood International Airport is a service of the Broward County Board of County Commissioners.