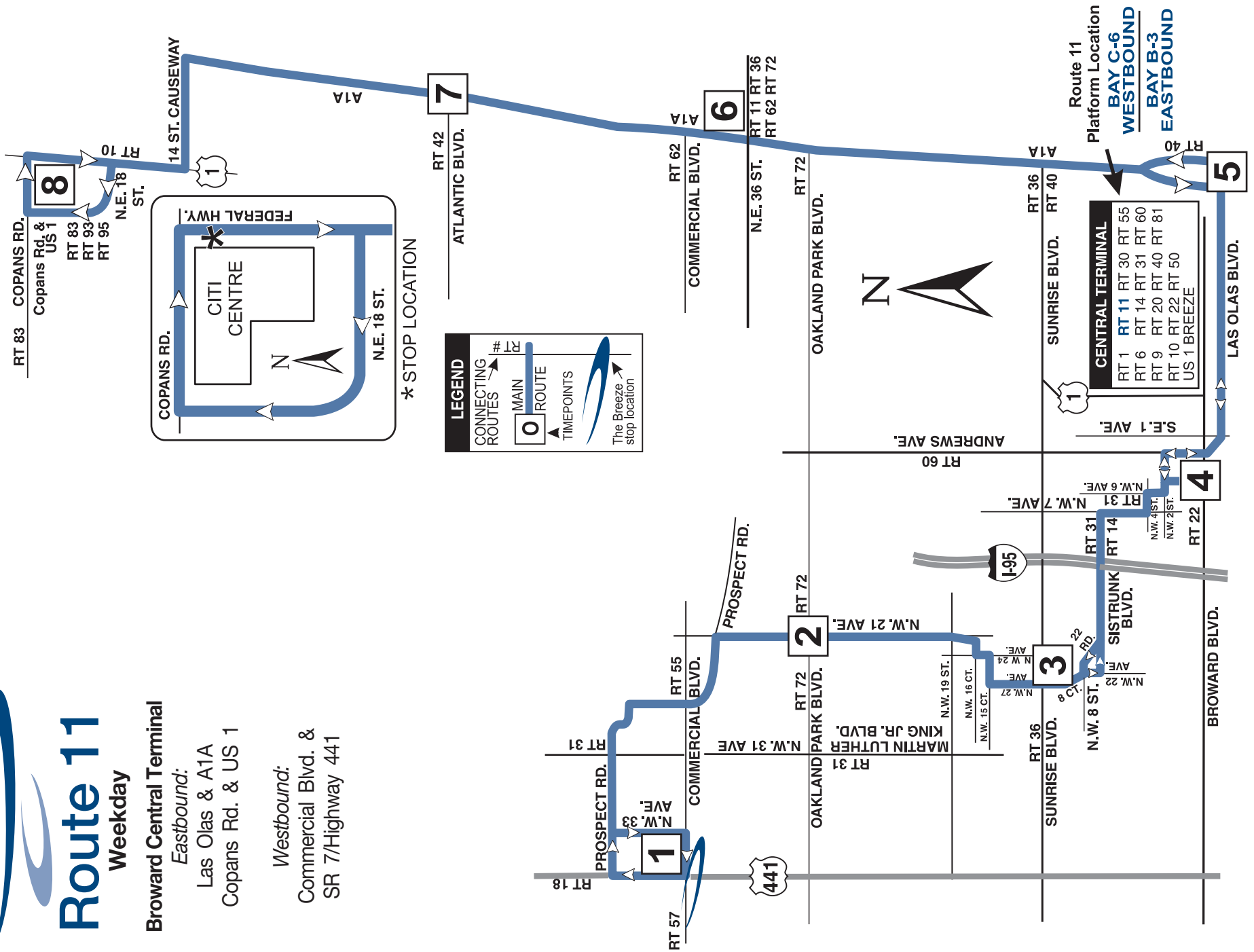


Route 11

Weekday

Broward Central Terminal
Eastbound:
 Las Olas & A1A
 Copans Rd. & US 1

Westbound:
 Commercial Blvd. &
 SR 7/Highway 441



Customer Service

Monday - Friday..... 7 am - 8 pm
 Saturday, Sunday and Holidays..... 8:30 am - 5 pm

Transit Operations Agents help with:

- Trip planning
 - Identifying Bus Pass
 - Routes, times and sales locations
 - Transfer information
 - Special event information
- Lost and Found: 954-357-6414, Monday - Friday, 8:30 am - 4:30 pm

Holiday Bus Service

Sunday bus service is provided on the following observed holidays:

- | | |
|------------------|------------------|
| New Year's Day | Labor Day |
| Memorial Day | Thanksgiving Day |
| Independence Day | Christmas Day |

Fares

Exact fare, dollar bill or coins required. Operators do not carry change.

Fares are: Regular, Senior/Youth/Disabled/Medicare/Student.* Children (under 40 inches ride FREE)

Fare Deals

All Day Bus Pass offers unlimited rides on all routes. On sale aboard all BCT buses.

NOTE: Other cost saving passes cannot be purchased on BCT buses, but are available at the Central Bus Terminal and at authorized distributors.

10 Ride Pass

10 Rides any time, any day.
 Expires after the tenth ride is taken.

7 Day Pass

Unlimited rides for seven consecutive days.
 Starts on the first day card is used.
 Expires after the seventh day.

31 Day Adult Pass

Unlimited rides for 31 consecutive days. Starts on the first day card is used.

31 Day Reduced Pass

Youth*, Seniors*, Disabled*, Medicare*, College Student*. Unlimited rides for 31 consecutive days. Starts on the first day card is used.
 Bus Passes are not redeemable, refundable or transferrable. Damaged cards are invalid. Lost, stolen or damaged cards will not be replaced.

*Notice: Proof of age is required for Youth fare (18 years or younger) and for Senior fare (65 years or older). For College Student fare, a college photo ID card is required. For Disabled and Medicare fare, proof of disability (Medicare card) and photo I.D. is required. Eligible Senior fare patrons are encouraged to acquire their BCT Reduced Fare Photo ID cards.

For more details on our fares please visit our web site at broward.org/bct/faresandpasses.htm or call customer service: 954.357.8400.

Reading A Timetable - It's Easy

1. The map shows the exact bus route.
2. Major route intersections are called time points. Time points are shown with the symbol □.
3. The timetable lists major time points for bus route. Listed under time points are scheduled departure times.
4. Reading from left to right, indicates the time for each bus trip.
5. The bus picks up and drops off riders at all BCT bus stop signs along the route where there is a Broward County bus stop sign.
6. Arrive at the bus stop five minutes early. Buses operate as close to published timetables as traffic conditions allow.

Information: 954.357.8400

Hearing-speech impaired/TTY:
 954.357.8302

This publication can be made available in large print, tape cassette, or Braille, by request.



This symbol is used on bus stop signs to indicate accessible bus stops.



BROWARD COUNTY
 BOARD OF COUNTY COMMISSIONERS
 An equal opportunity employer and provider of service.

This public document was promulgated at a cost of \$698.75, or \$.028 per copy, to inform the public about the Office of Transportation's schedule and route information. 10/07



printed on recycled paper

TIMETABLE

ROUTE 11

Weekday
 Effective 10/07/07

Broward Central Terminal
Eastbound:
 Las Olas & A1A
 Copans Rd. & US 1

Westbound:
 Commercial Blvd. &
 SR 7/Highway 441

BROWARD COUNTY
Transit
 A service of the
 Broward County Commission

Wheelchair Accessible
 Bike Racks

www.broward.org/bct



Route 11

Weekday

BROWARD COUNTY TRANSIT
www.broward.org/bct

Broward Central Terminal

Eastbound:

Las Olas & A1A
Copans Rd. & US 1

Westbound:

Commercial Blvd. &
SR 7/Highway 441

WEEKDAY

EASTBOUND

To Copans Rd. & US 1

1	COMMERCIAL BLVD. & SR 7/HWY. 441	5:00a	5:15a	5:25a	5:35a	5:40a	5:53a	6:03a	6:13a	6:25a
2	OAKLAND PARK BLVD. & N.W. 21 AVE.	5:30a	5:45a	5:55a	6:05a	6:10a	6:23a	6:33a	6:43a	6:55a
3	SUNRISE BLVD. & N.W. 27 AVE.	6:10a	6:20a	6:25a	6:30a	6:35a	6:48a	7:00a	7:12a	7:25a
4	BROWARD CENTRAL TERMINAL ARRIVE	6:15a	6:30a	6:42a	6:55a	7:00a	7:13a	7:25a	7:37a	7:50a
4	BROWARD CENTRAL TERMINAL DEPART	6:40a	6:58a	7:10a	7:25a	7:30a	7:43a	7:55a	8:07a	8:20a
5	LAS OLAS BLVD. & A1A	7:10a	7:28a	7:40a	7:55a	8:00a	8:13a	8:25a	8:37a	8:50a
6	N.E. 36 ST. & A1A	7:40a	7:58a	8:10a	8:25a	8:30a	8:43a	8:55a	9:07a	9:20a
7	ATLANTIC BLVD. & A1A	8:15a	8:33a	8:45a	9:00a	9:05a	9:18a	9:30a	9:42a	9:55a
8	COPANS RD. & US 1	8:45a	9:03a	9:15a	9:30a	9:35a	9:48a	10:00a	10:12a	10:25a
		9:15a	9:33a	9:45a	9:56a	10:01a	10:14a	10:26a	10:38a	10:51a
		9:45a	10:02a	10:12a	10:25a	10:30a	10:43a	10:55a	11:07a	11:20a
		10:15a	10:32a	10:42a	10:55a	11:00a	11:13a	11:25a	11:37a	11:50a
		10:45a	11:02a	11:12a	11:25a	11:30a	11:43a	11:55a	12:07p	12:20p
		11:15a	11:32a	11:42a	11:55a	12:00p	12:13p	12:25p	12:37p	12:50p
		11:45a	12:02p	12:12p	12:25p	12:30p	12:43p	12:55p	1:07p	1:20p
		12:15p	12:32p	12:42p	12:55p	1:00p	1:13p	1:25p	1:37p	1:50p
		12:45p	1:02p	1:12p	1:25p	1:30p	1:43p	1:55p	2:07p	2:20p
		1:15p	1:32p	1:42p	1:55p	2:00p	2:13p	2:25p	2:37p	2:50p
		1:45p	2:02p	2:12p	2:25p	2:30p	2:43p	2:55p	3:07p	3:20p
		2:15p	2:32p	2:42p	2:55p	3:00p	3:13p	3:25p	3:37p	3:50p
		2:45p	3:02p	3:12p	3:25p	3:30p	3:43p	3:55p	4:07p	4:20p
		3:15p	3:32p	3:44p	3:59p	4:04p	4:17p	4:29p	4:41p	4:54p
		3:45p	4:03p	4:15p	4:30p	4:35p	4:48p	5:00p	5:12p	5:25p
		4:15p	4:33p	4:45p	5:00p	5:05p	5:18p	5:30p	5:42p	5:55p
		4:45p	5:03p	5:15p	5:30p	5:35p	5:48p	6:00p	6:12p	6:25p
		5:15p	5:33p	5:45p	6:00p	6:05p	6:18p	6:30p	6:42p	6:55p
		5:45p	6:03p	6:15p	6:30p	6:35p	6:48p	7:00p	7:12p	7:25p
		6:15p	6:32p	6:42p	6:55p	7:00p	7:13p	7:25p	7:37p	7:50p
		6:45p	7:02p	7:12p	7:25p	7:30p	7:43p	7:55p	8:07p	8:20p
		7:15p	7:32p	7:42p	7:55p	8:00p	8:13p	8:25p	8:37p	8:50p
		8:05p	8:20p	8:30p	8:40p	8:45p	8:58p	9:08p	9:18p	9:30p
		9:05p	9:20p	9:30p	9:40p	9:45p	9:58p	10:08p	10:18p	10:30p
		10:00p	10:15p	10:25p	10:35p	10:40p	10:53p	11:03p	11:13p	11:25p
		11:00p	11:15p	11:25p	11:35p					

WESTBOUND

To Commercial Blvd. & SR 7/Highway 441

8	COPANS RD. & US 1	5:00a	5:12a	5:22a	5:32a	5:45a	5:50a	6:00a	6:10a	6:25a
7	ATLANTIC BLVD. & A1A	5:30a	5:42a	5:52a	6:02a	6:15a	6:20a	6:30a	6:42a	7:00a
6	N.E. 36 ST. & A1A	6:00a	6:12a	6:22a	6:32a	6:45a	6:50a	7:05a	7:17a	7:35a
5	LAS OLAS BLVD. & A1A	6:30a	6:43a	6:55a	7:07a	7:20a	7:25a	7:40a	7:52a	8:10a
4	BROWARD CENTRAL TERMINAL ARRIVE	7:00a	7:13a	7:25a	7:37a	7:50a	7:55a	8:10a	8:22a	8:40a
4	BROWARD CENTRAL TERMINAL DEPART	7:30a	7:43a	7:55a	8:07a	8:20a	8:25a	8:40a	8:52a	9:10a
3	SUNRISE BLVD. & N.W. 27 AVE.	8:00a	8:13a	8:25a	8:37a	8:50a	8:55a	9:10a	9:22a	9:39a
2	OAKLAND PARK BLVD. & N.W. 21 AVE.	8:30a	8:43a	8:55a	9:07a	9:20a	9:25a	9:39a	9:49a	10:06a
1	COMMERCIAL BLVD. & SR 7/HWY. 441	9:00a	9:13a	9:25a	9:37a	9:50a	10:08a	10:18a	10:35a	10:55a
		9:30a	9:43a	9:55a	10:07a	10:20a	10:25a	10:38a	10:48a	11:05a
		10:00a	10:13a	10:25a	10:37a	10:50a	10:55a	11:08a	11:18a	11:35a
		10:30a	10:43a	10:55a	11:07a	11:20a	11:25a	11:38a	11:48a	12:05p
		11:00a	11:13a	11:25a	11:37a	11:50a	11:55a	12:08p	12:18p	12:35p
		11:30a	11:43a	11:55a	12:07p	12:20p	12:25p	12:38p	12:48p	1:05p
		12:00p	12:13p	12:25p	12:37p	12:50p	12:55p	1:08p	1:18p	1:35p
		12:30p	12:43p	12:55p	1:07p	1:20p	1:25p	1:38p	1:48p	2:05p
		1:00p	1:13p	1:25p	1:37p	1:50p	1:55p	2:08p	2:18p	2:35p
		1:30p	1:43p	1:55p	2:07p	2:20p	2:25p	2:38p	2:48p	3:05p
		2:00p	2:13p	2:25p	2:37p	2:50p	2:55p	3:08p	3:18p	3:35p
		2:30p	2:43p	2:55p	3:07p	3:20p	3:25p	3:39p	3:51p	4:09p
		3:00p	3:13p	3:25p	3:37p	3:50p	3:55p	4:10p	4:22p	4:40p
		3:30p	3:43p	3:55p	4:07p	4:20p	4:25p	4:40p	4:52p	5:10p
		4:00p	4:13p	4:25p	4:37p	4:50p	4:55p	5:10p	5:22p	5:40p
		4:30p	4:43p	4:55p	5:07p	5:20p	5:25p	5:40p	5:52p	6:10p
		5:00p	5:13p	5:25p	5:37p	5:50p	5:55p	6:10p	6:22p	6:39p
		5:30p	5:43p	5:55p	6:07p	6:20p	6:25p	6:39p	6:49p	7:06p
		6:00p	6:13p	6:25p	6:37p	6:50p	6:55p	7:08p	7:18p	7:35p
		6:30p	6:43p	6:55p	7:07p	7:20p	7:25p	7:38p	7:48p	8:05p
		7:30p	7:43p	7:55p	8:07p	8:20p	8:25p	8:38p	8:48p	9:05p
		8:30p	8:43p	8:55p	9:07p	9:20p	9:25p	9:35p	9:45p	10:00p
		9:30p	9:42p	9:52p	10:02p	10:15p	10:20p	10:30p	10:40p	10:55p
		10:30p	10:42p	10:52p	11:02p	11:15p	11:20p	11:30p	11:40p	11:55p

NUMBERS IN BOXES REFER TO TIME POINTS ON MAP
Times with the letter "G" before them indicate bus returns to garage.



When it comes to our safety,
we can always use an extra pair of eyes.
Look around. Be aware.
If something does not look right, let us know.
Contact 954.978.1100.

TRANSFER POLICY

NO TRANSFERS ARE ISSUED BETWEEN BCT BUSES.

TO OTHER TRANSIT SYSTEMS:

When transferring from BCT to Miami-Dade Transit (MDT), Palm-Tran or Tri-Rail you get a free transfer and must pay the appropriate fare on the other transit system.

FROM OTHER TRANSIT SYSTEMS:

When transferring to BCT from Miami-Dade Transit (MDT), Palm-Tran or Tri-Rail, passengers pay \$.50 with a transfer issued by MDT, Palm Tran, or with a Tri-Rail pass.

PROTECTIONS OF TITLE VI OF THE CIVIL RIGHTS ACT OF 1964 AS AMENDED

Any person(s) or group(s) who believes that they have been subjected to discrimination because of race, color, or national origin, under any transit program or activity provided by Broward County Transit (BCT), may call 954-357-8481 to file a Title VI discrimination complaint or write to Broward County Office of Transportation, Compliance Manager, 3201 West Copans Road, Bldg. 1, Pompano Beach, Florida 33069.