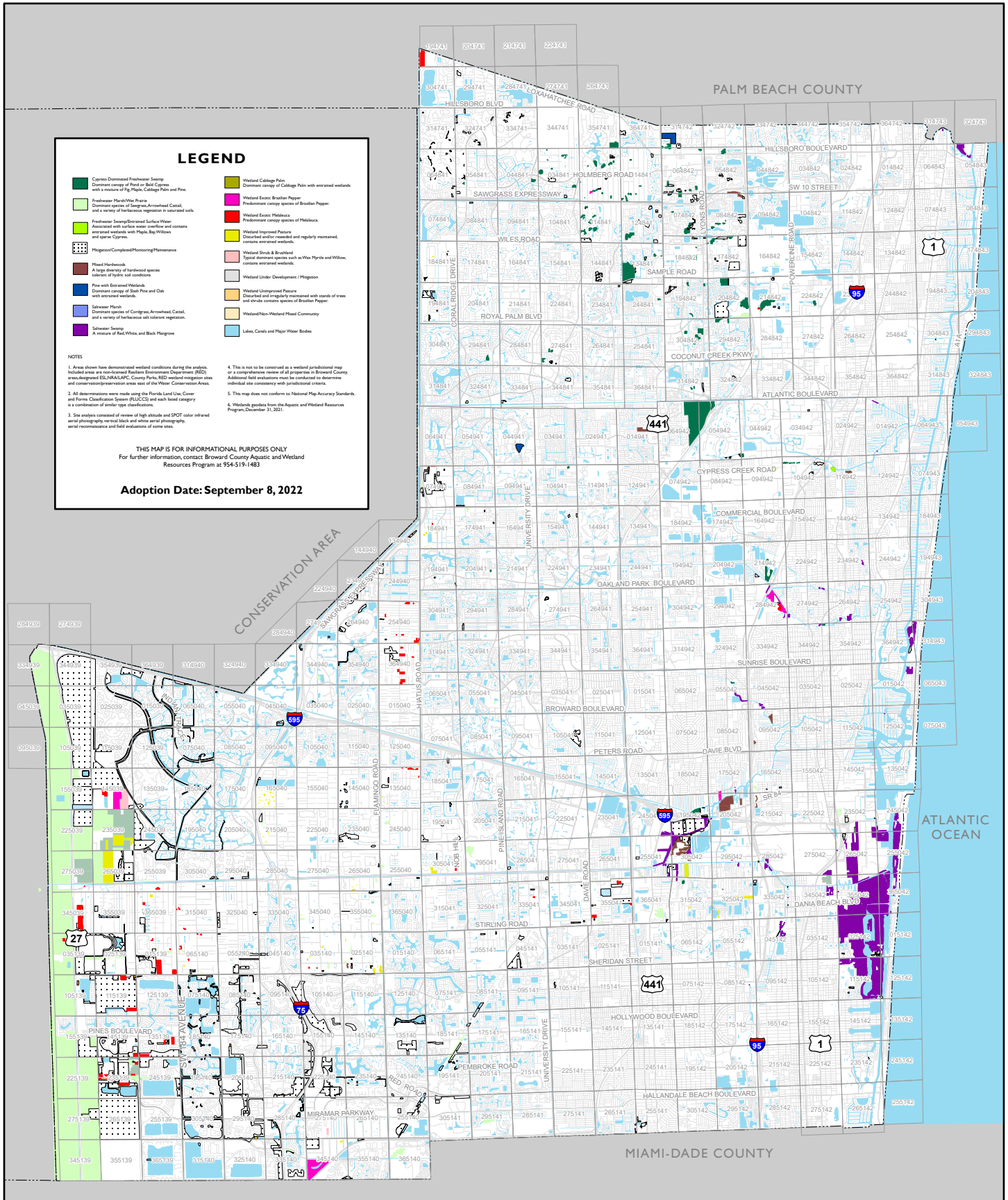


BROWARD COUNTY LAND USE PLAN NATURAL RESOURCE MAP SERIES

Eastern Broward County Wetlands



LEGEND

Cypress Dominated Freshwater Swamp Dominant canopy of Pond or Bell Cypress with extensive of Big Palm, Cabbage Palm and Pine.	Wetland Cabbage Palm Dominant canopy of Cabbage Palm with scattered wetlands.
Freshwater Marsh/Vegetation Dominant species of Sagro, Arrowhead, Cattail, and a variety of herbaceous vegetation in saturated soils.	Wetland Exotic Brazilian Pepper Predominant canopy species of Brazilian Pepper.
Freshwater Swamp/Entrained Surface Water Associated with surface water, swamps and contains scattered wetlands with Major, Bay Willow and other cypress.	Wetland Exotic Mahoe Predominant canopy species of Mahoe.
Wetland Under Development / Mitigation	Wetland Improved Pasture Disturbed and/or reseeded and regularly mowed, contains scattered wetlands.
Flood Hardwood Large diversity of hardwood species tolerant of cyclic soil conditions.	Wetland Shrub & Broadleaf Typical dominant species such as Wax Myrtle and Willow, contains scattered wetlands.
Pine with Entrained Wetlands Dominant canopy of Slash Pine and Oak with scattered wetlands.	Wetland Unimproved Pasture Disturbed and regularly mowed with stands of trees and shrubs contains species of Brazilian Pepper.
Saltwater Marsh Dominant species of Cordgrass, Arrowhead, Cattail, and a variety of herbaceous salt tolerance vegetation.	Wetland/Non-Wetland Mixed Community
Saltwater Swamp A mixture of Bay Willow and Black Mangrove.	Lakes, Canals and Major Water Bodies

NOTES

1. Areas shown have demonstrated wetland conditions during the analysis. Included areas are non-Broward Resident Environmental Department (RED) areas designated ECR, NRI, AEC, County Parks, RED wetland mitigation areas and conservation/preservation areas east of the Water Conservation Areas.
2. All determinations were made using the Florida Land Use, Cover and Form Classification System (FLUCFS) and each land category is a combination of similar type classifications.
3. Site analysis consisted of review of high altitude and SPOT color infrared aerial photography, vertical black and white aerial photography, aerial reconnaissance and field evaluations of some sites.
4. This is not to be construed as a wetland jurisdictional map or a comprehensive review of all properties in Broward County. Additional field evaluations must be conducted to determine individual site compliance with jurisdictional criteria.
5. This map does not conform to National Map Accuracy Standards.

Adoption Date: September 8, 2022

SOURCES

Broward County Aquatic and Wetland Resources, Broward County Planning Council



NOT TO SCALE