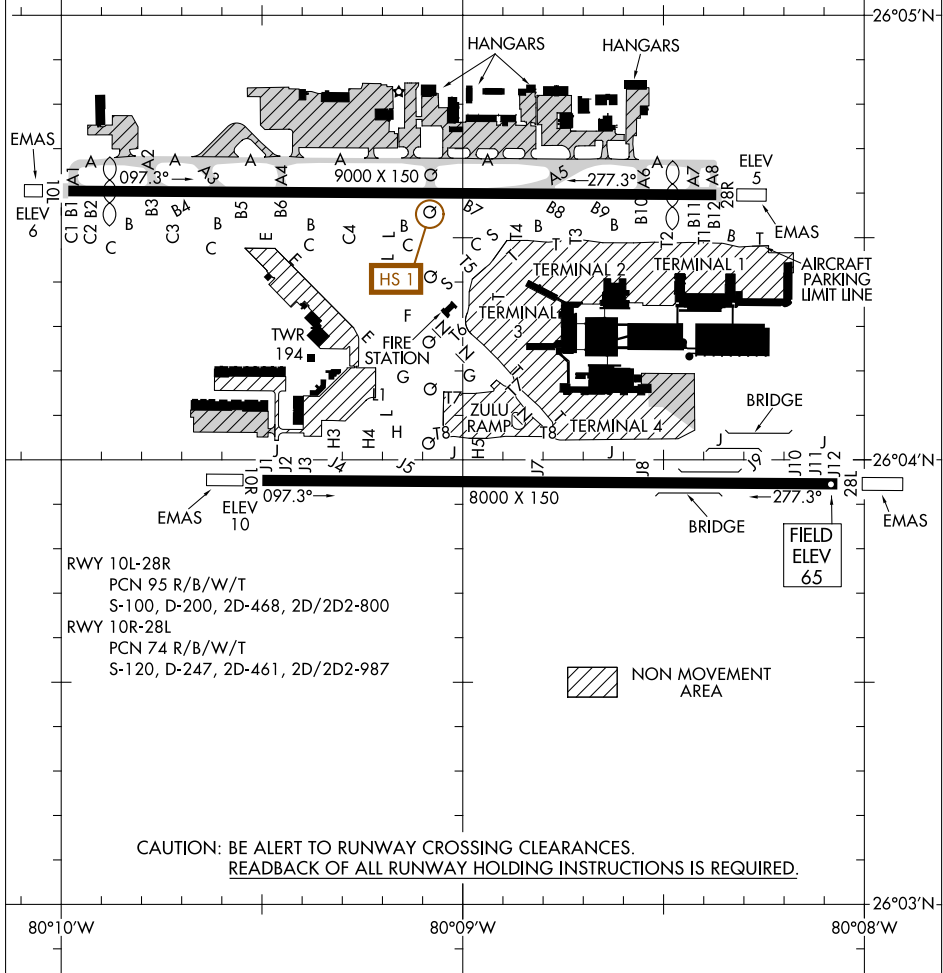


D-ATIS
135.0
FORT LAUDERDALE TOWER
119.3 257.8
GND CON
121.4
CLNC DEL
128.4
CPDLC
PDC
D

VAR 9° 56' W
212
JANUARY 2020
ANNUAL RATE OF CHANGE
0.1° W

ASDE-X in use. Operate transponders with altitude reporting mode and ADS-B (if equipped) enabled on all airport surfaces.

Runway Status Lights in operation.



SE-3, 09 SEP 2021 to 07 OCT 2021

SE-3, 09 SEP 2021 to 07 OCT 2021