



Fort Lauderdale-Hollywood International Airport

Monthly Operations & RNAV Use Report

January 2025



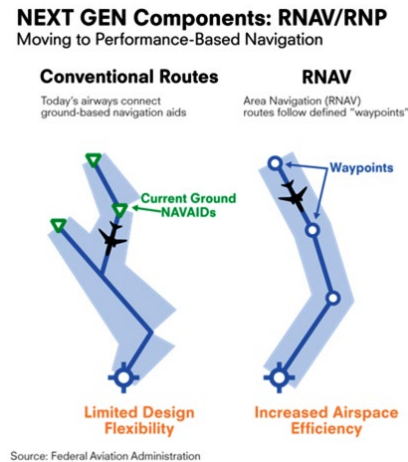
This RNAV Report provides a monthly overview of aircraft arriving and departing from Fort Lauderdale-Hollywood International Airport (FLL). The purpose of this report is to determine the number of aircraft that utilize Area Navigation (RNAV) procedures using the FLL Airport Noise and Operations Monitoring System (ANOMS).

OVERVIEW OF NEXTGEN

The Next Generation Air Transportation System (NextGen) is the FAA-led modernization of the United States National Airspace System (NAS). Goals include using new technologies and procedures to increase the safety, efficiency, and predictability of the NAS, as well as reducing the overall environmental impact of aviation. The FAA implemented the South-Central Florida Metroplex Project on August 12, 2021. This project is aimed at improving the safety and efficiency of airspace in South-Central Florida by optimizing arrival and departure procedures at 21 regional airports.

RNAV

RNAV is a method of navigation that consists of routes formed from a series of waypoints (geographical points on the ground) that may have required altitude or performance characteristics. Aircraft said to be navigating on RNAV procedures must fly over or near these waypoints (within a given tolerance), attaining the given altitude or performance settings set by the FAA and air traffic control (ATC). The potential advantages of RNAV routes include time and fuel savings, reduced dependency on radar vectoring, reduced ATC transmissions, and more efficient use of airspace.



Operations and Runway Use

This section provides a tabular and graphical summary of monthly operations and runway use at FLL. Monthly operations are broken down by airframe type, arrivals,

and departures, time of day (night defined as 10:30 pm to 6:00 am) and runway use is separated graphically by east and west flow.

RNAV PROCEDURES FOR FLL

This report provides a tabular and graphical summary of overall RNAV procedures for FLL. For aircraft arriving to or departing from FLL, there are 14 published RNAV procedures in total. These procedures each consist of waypoints and have multiple routes. This report will allow residents near the airport to understand, at a glance, the usage of RNAV procedures that most affect them.

Standard Instrument Departures (SIDs)

- AGERS, BNICE, FEALX, GLADZ, FRSE, HROCK, LIFRR, MAYNR, REGAE, SNAPR

Standard Arrival Routes (STARs)

- BHHIA, CUUDA, OLAHS, TEEKY

FLIGHT TRACK DENSITY PLOTS

Flight track density plots show the relative use of the airspace surrounding FLL. Color ranges are assigned based on the relative density of traffic (from low to high) for several categories:

- Jet Arrivals
- Jet Departures
- Jet Departures – Close Up
- Non-Jet Operations

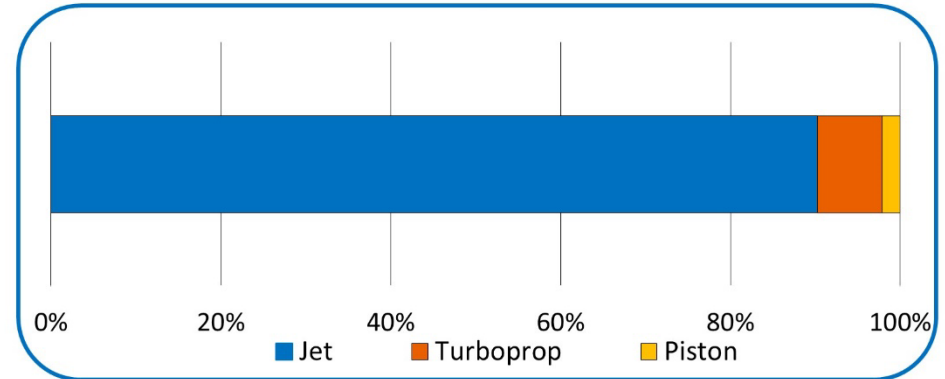
RESOURCES

- https://www.faa.gov/air_traffic/community_engagement/florida/
- http://metroplexenvironmental.com/fl_metroplex/fl_introduction.html
- http://www.metroplexenvironmental.com/fl_metroplex/fl_docs.html
- https://www.faa.gov/nextgen/this_is_nextgen/

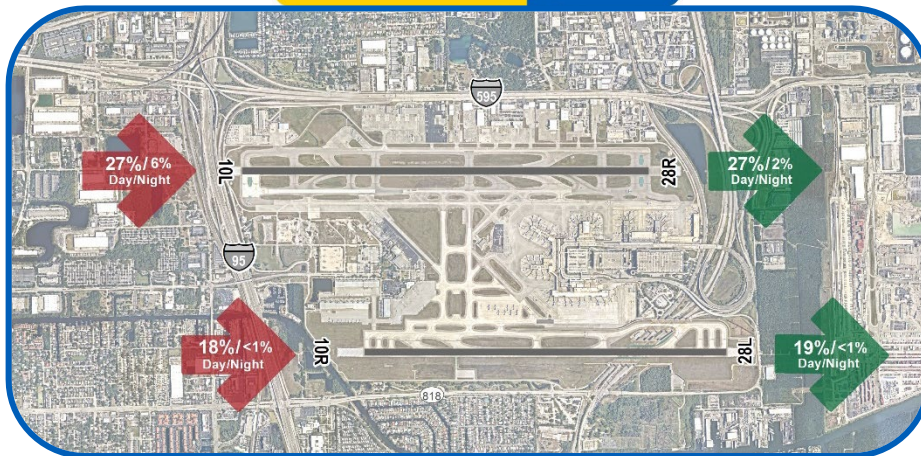
Monthly Operations and Runway Use

January 2025

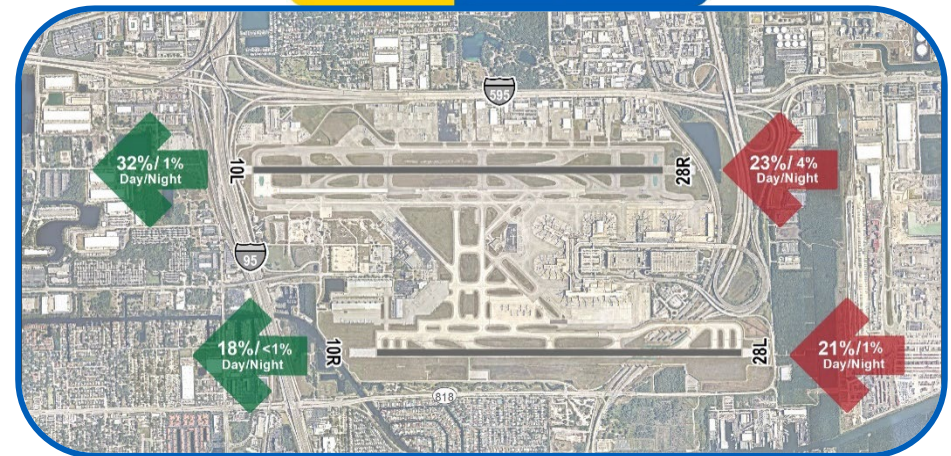
Type	Arrivals	Departures	Total
Jet	12,368	12,436	24,804
Turboprop	1,025	1,009	2,034
Piston	306	302	608
Total	13,699	13,747	27,446



East Flow Runway Use

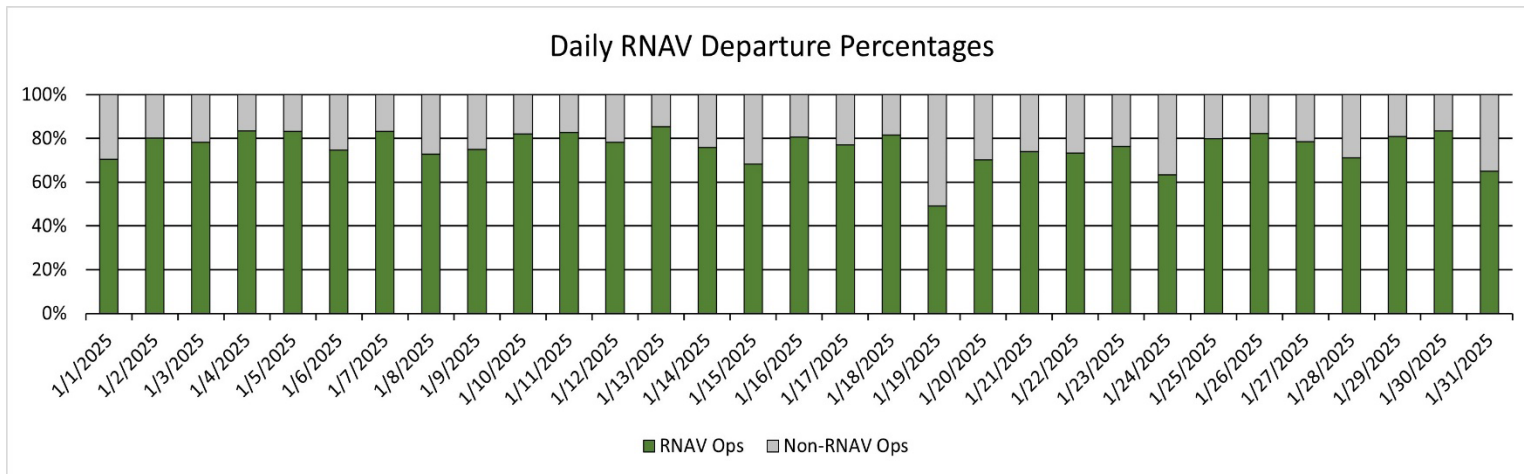
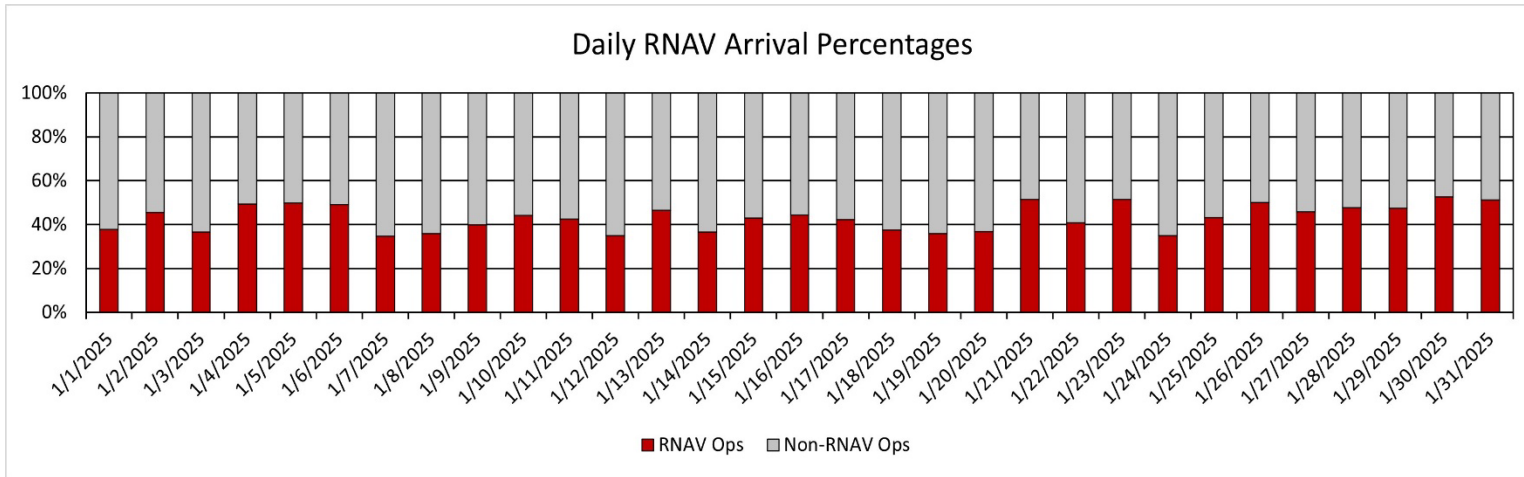


West Flow Runway Use



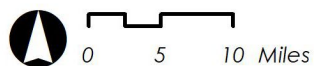
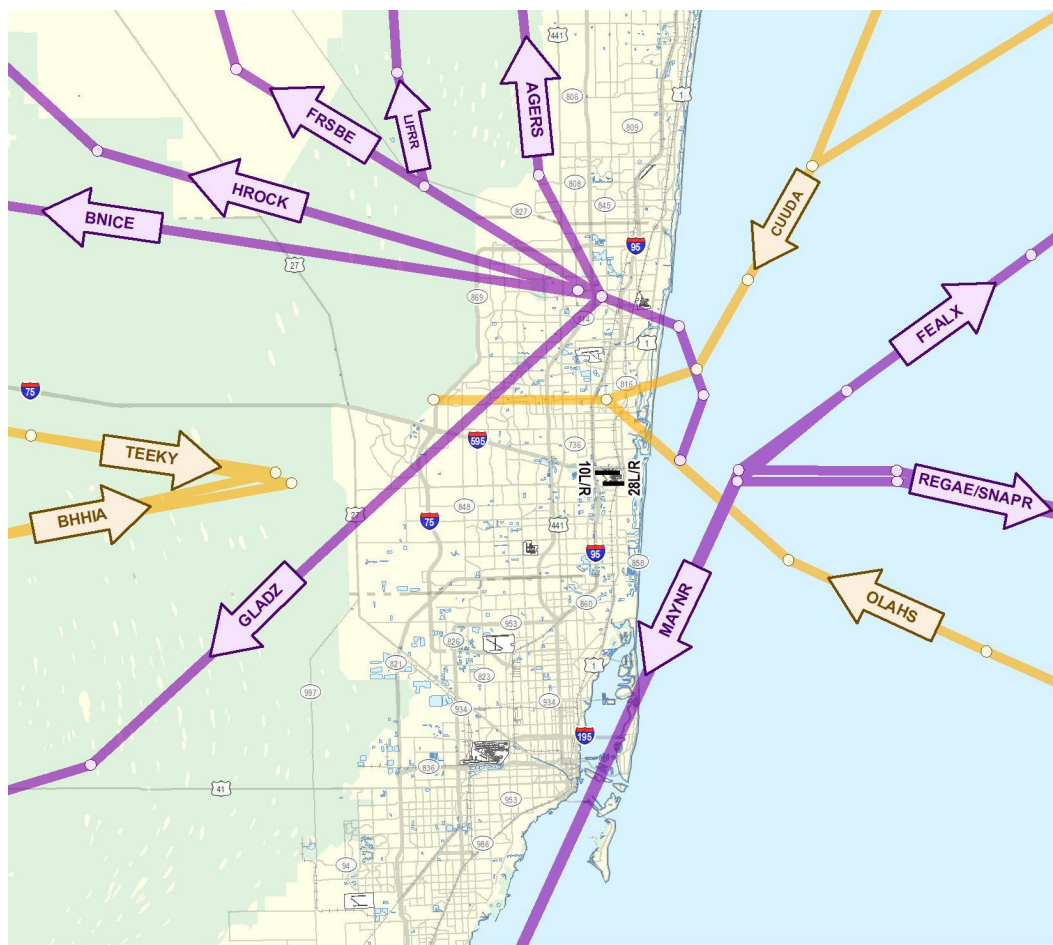
Arrival and Departure Daily RNAV Percentages

January 2025



FLL RNAV East Flow Operations

Monthly RNAV Use Summary



FLL STAR Procedure
 FLL SID Procedure

STARS | Arrivals

Procedure Name	# of Operations
BHHIA	7
CUUDA	687
OLAHS	196
TEEKY	1,627

48%

SIDS | Departures

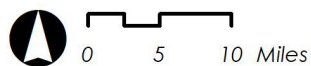
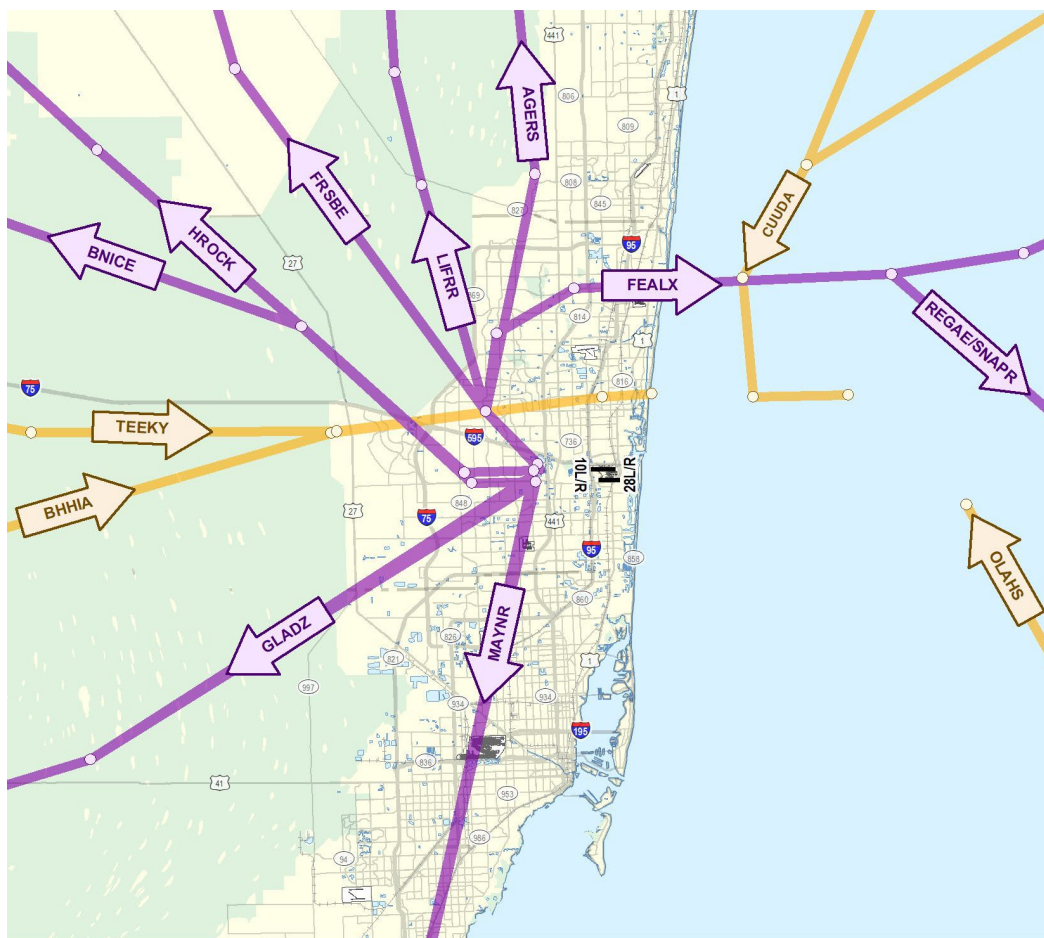
Procedure Name	# of Operations
AGERS	25
BNICE	429
FEALX	1,330
FRSBE	338
GLADZ	60
HROCK	397
LIFRR	145
MAYNR	78
REGAE	0
SNAPR	825

80%

Note: The Arrivals and Departures tables on the right represent the total number of flights during the month flying the full procedure for each procedure listed. Percentages represent any jet flying on an RNAV within Broward County. Flights that are vectored early are not included in this list.

FLL RNAV West Flow Operations

Monthly RNAV Use Summary



— FLL STAR Procedure
— FLL SID Procedure

STARS | Arrivals

Procedure Name	# of Operations
BHHIA	4
CUUDA	358
OLAFS	177
TEEKY	811



38%

SIDS | Departures

Procedure Name	# of Operations
AGERS	20
BNICE	399
FEALX	993
FRSBE	362
GLADZ	0
HROCK	273
LIFRR	13
MAYNR	242
REGAE	0
SNAPR	1

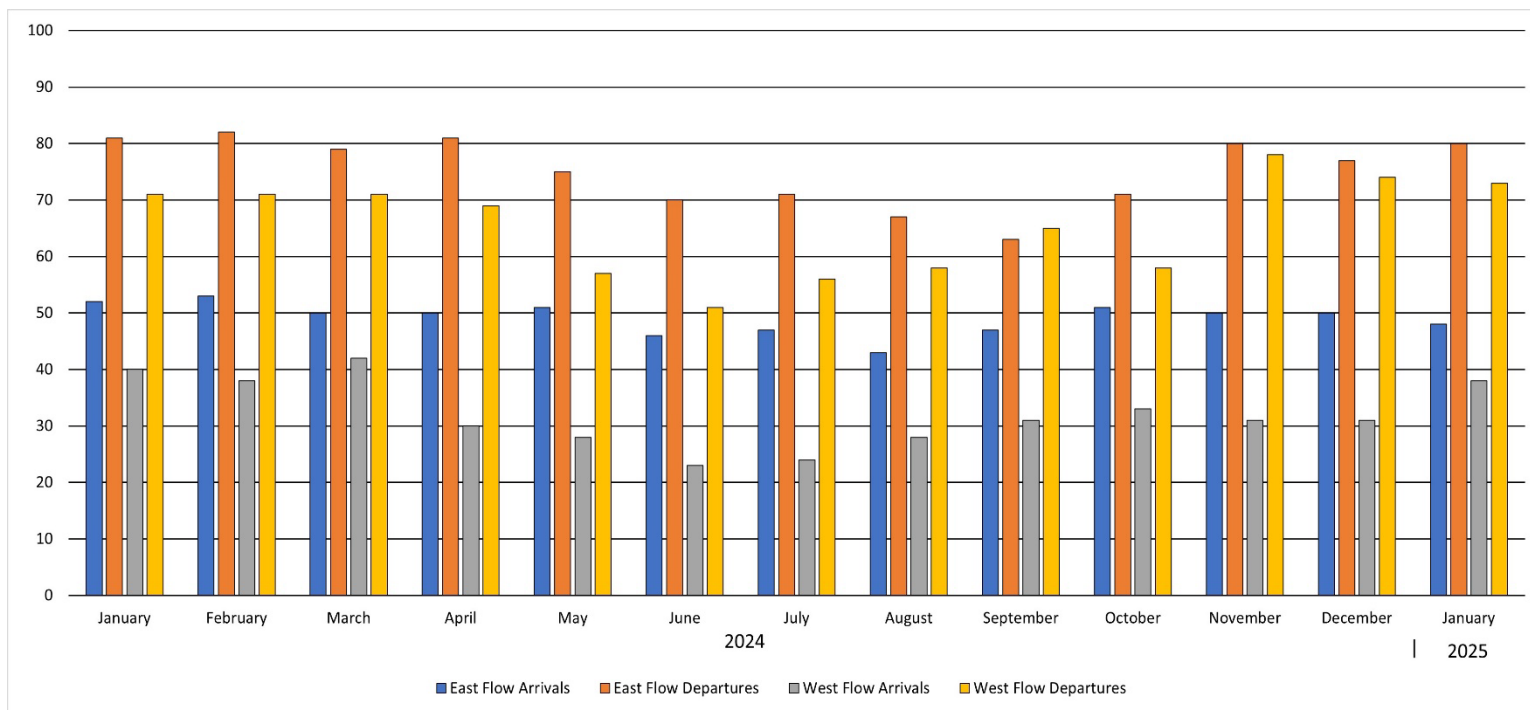


73%

Note: The Arrivals and Departures tables on the right represent the total number of flights during the month flying the full procedure for each procedure listed. Percentages represent any jet flying on an RNAV within Broward County. Flights that are vectored early are not included in this list.

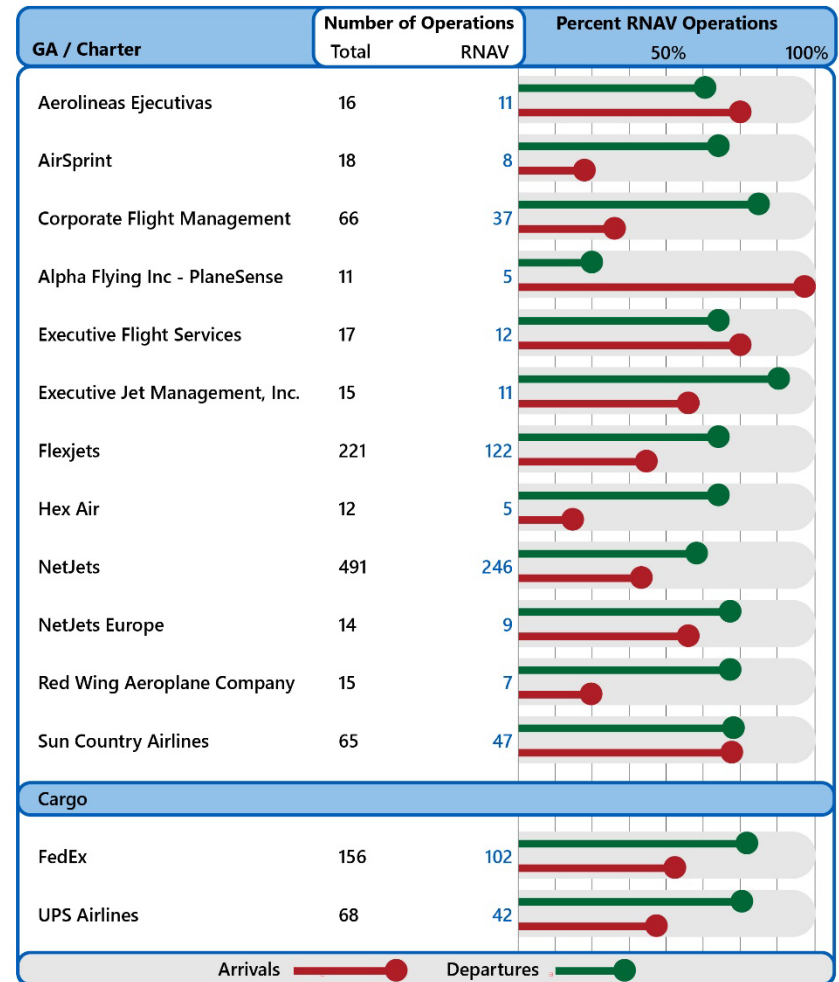
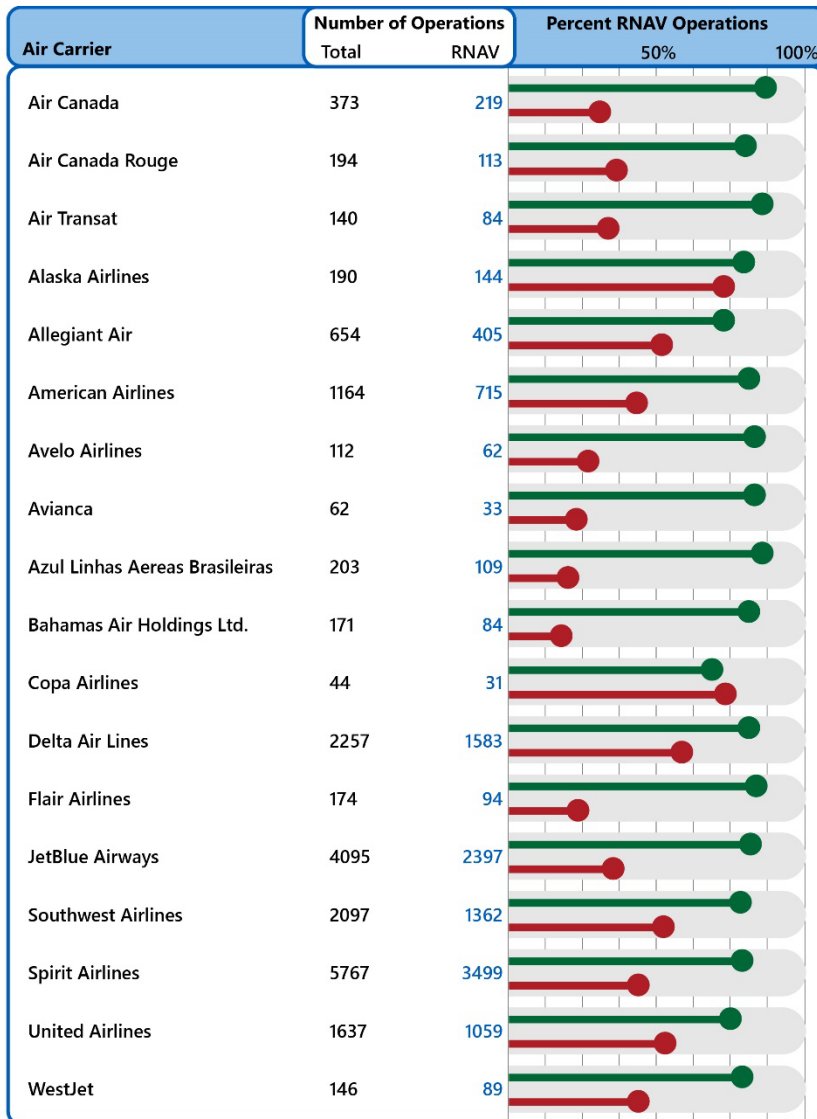
Monthly East and West Flow RNAV Percentages

January 2025



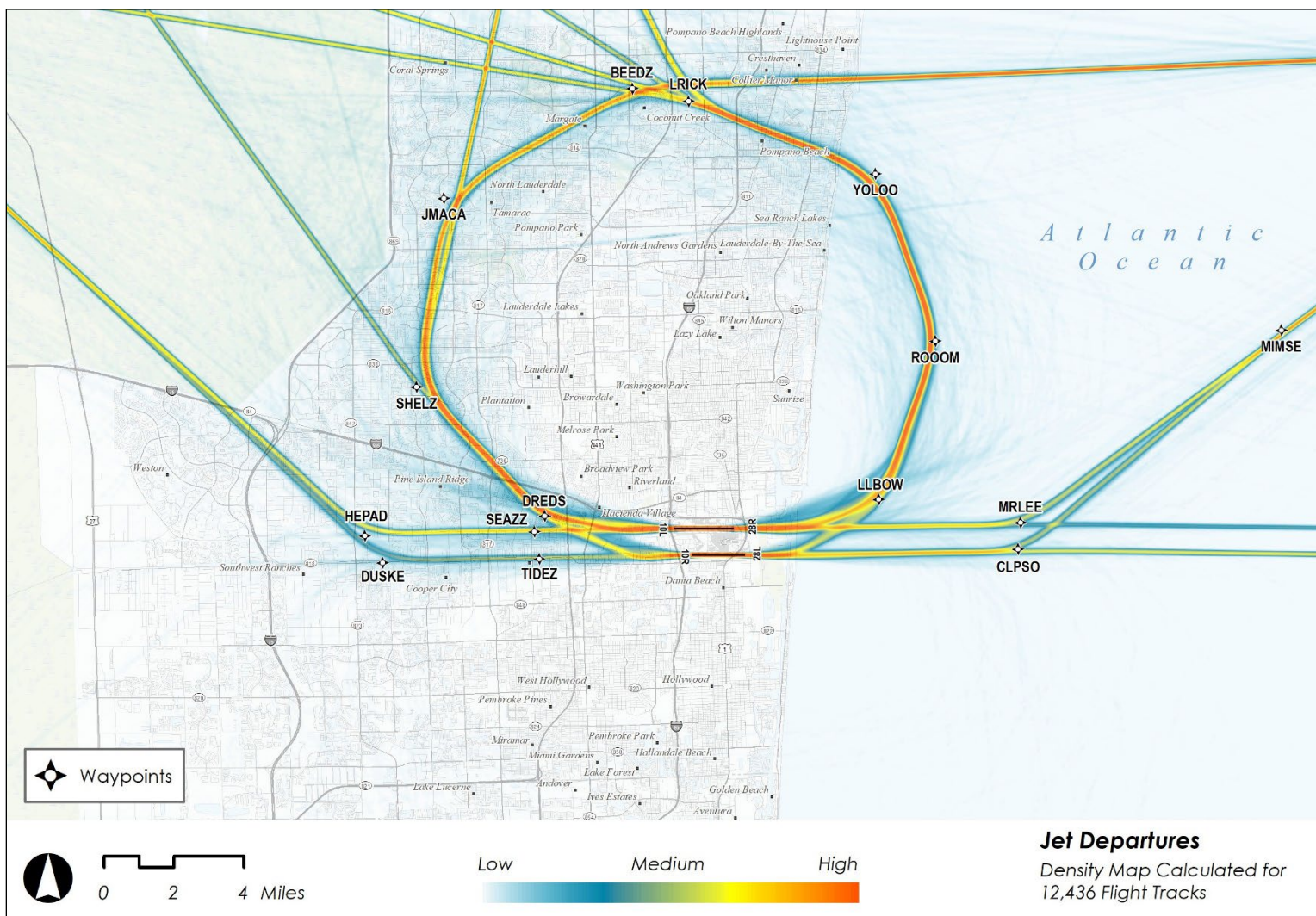
Monthly RNAV Use by Operator

January 2025



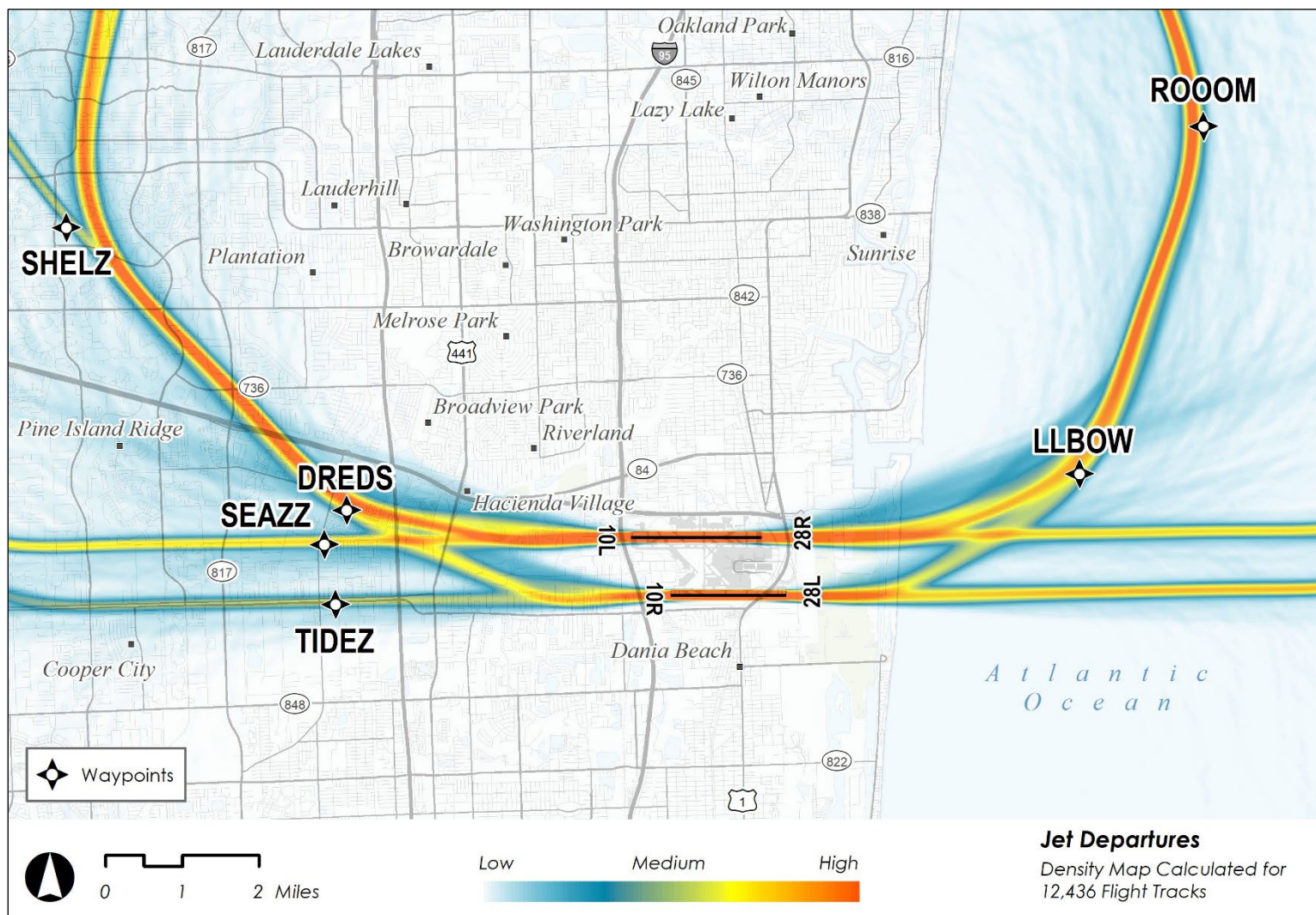
Relative Airspace Density

For All Jet Departures
 January 2025



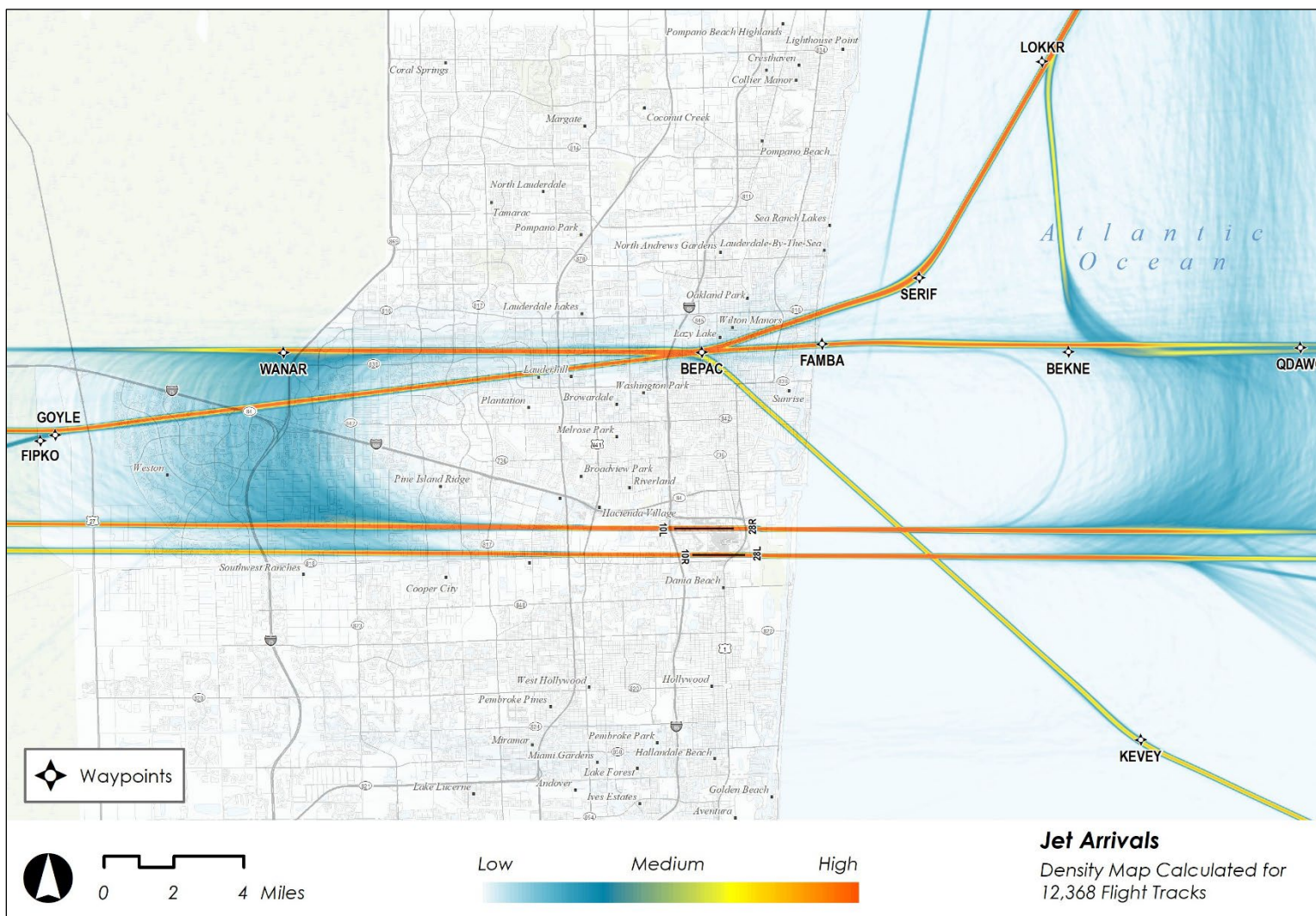
Relative Airspace Density

For All Jet Departures
 January 2025



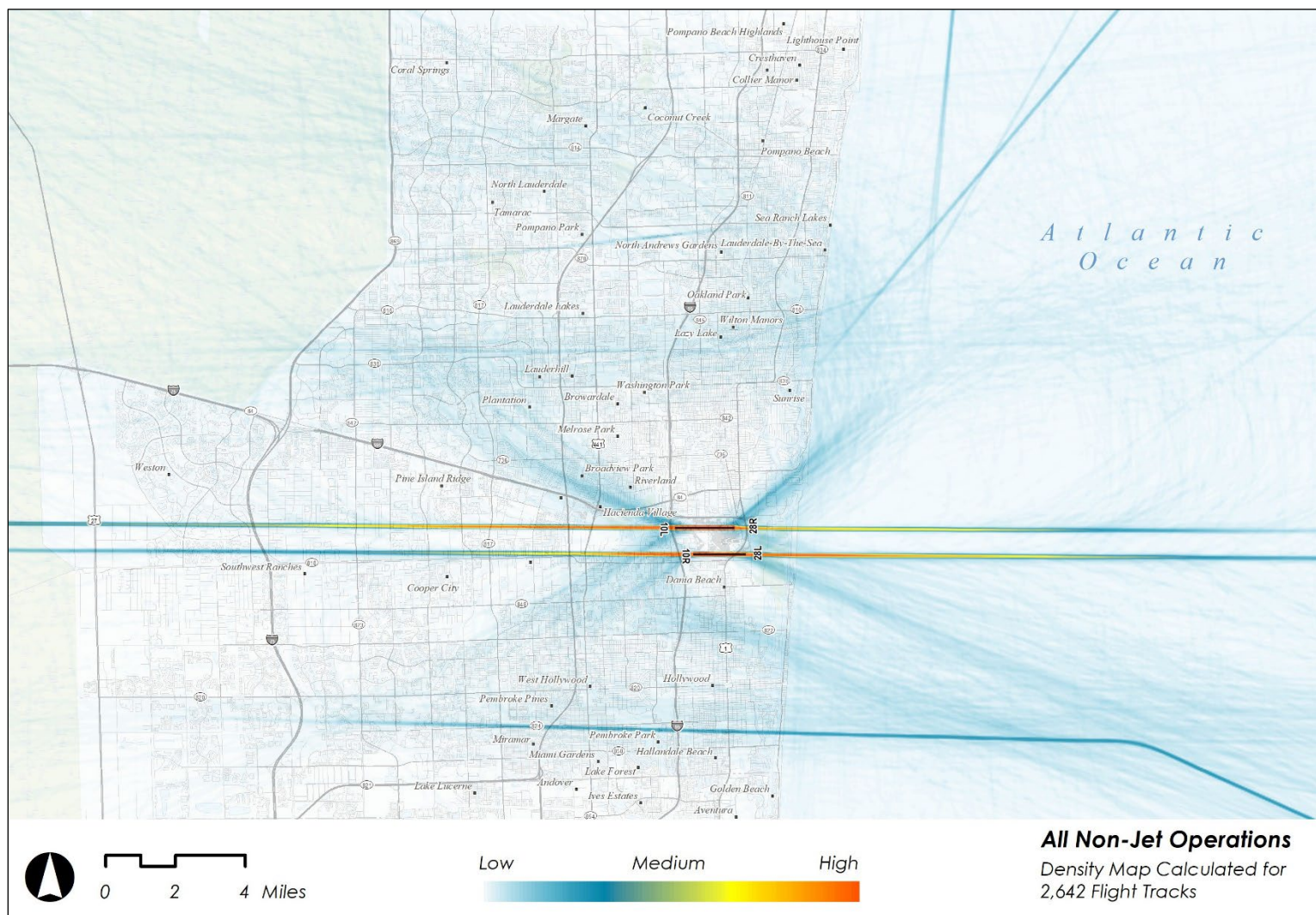
Relative Airspace Density

For All Jet Arrivals
 January 2025



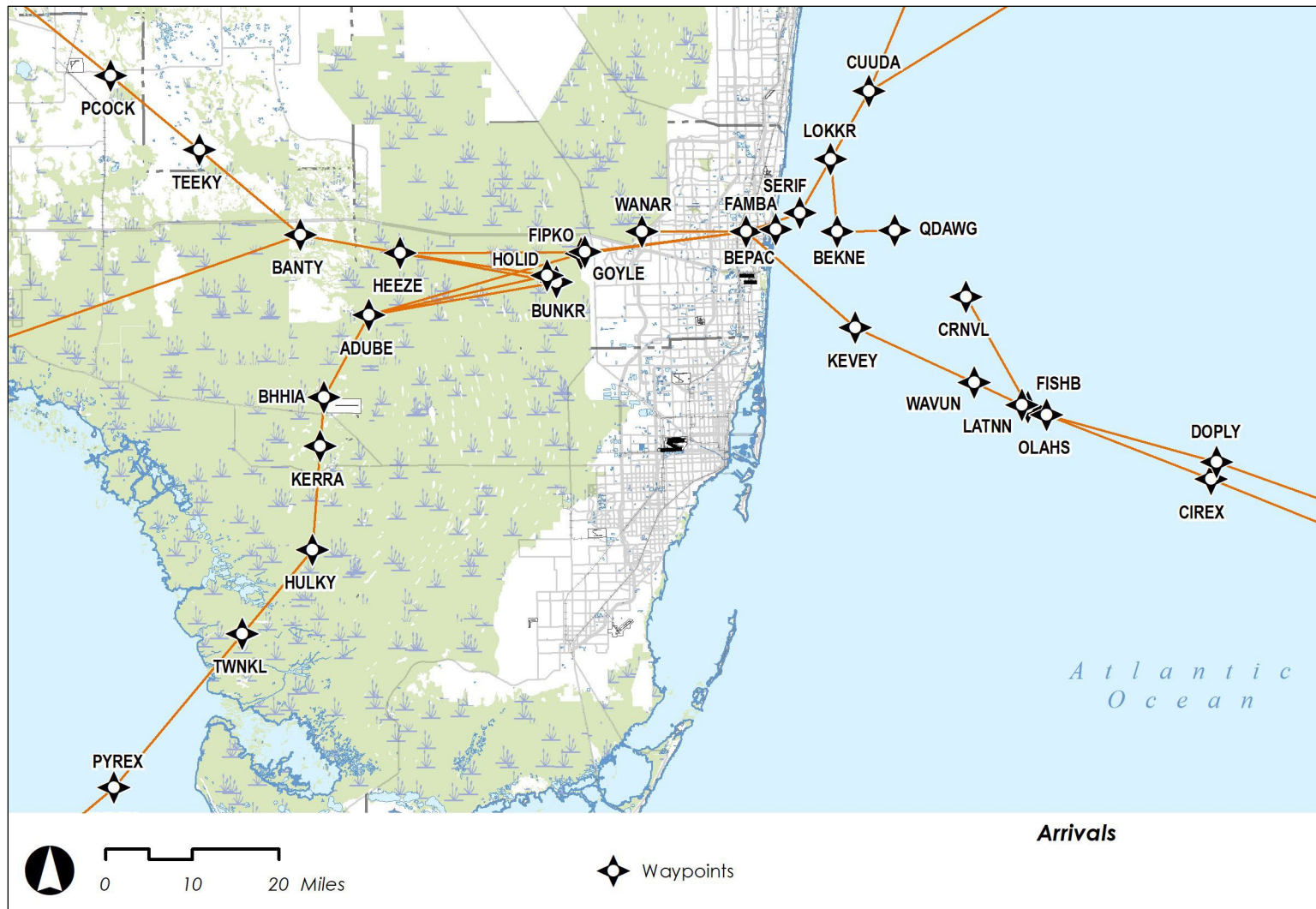
Relative Airspace Density

For All Non-Jet Arrival and Departures
 January 2025



Appendix

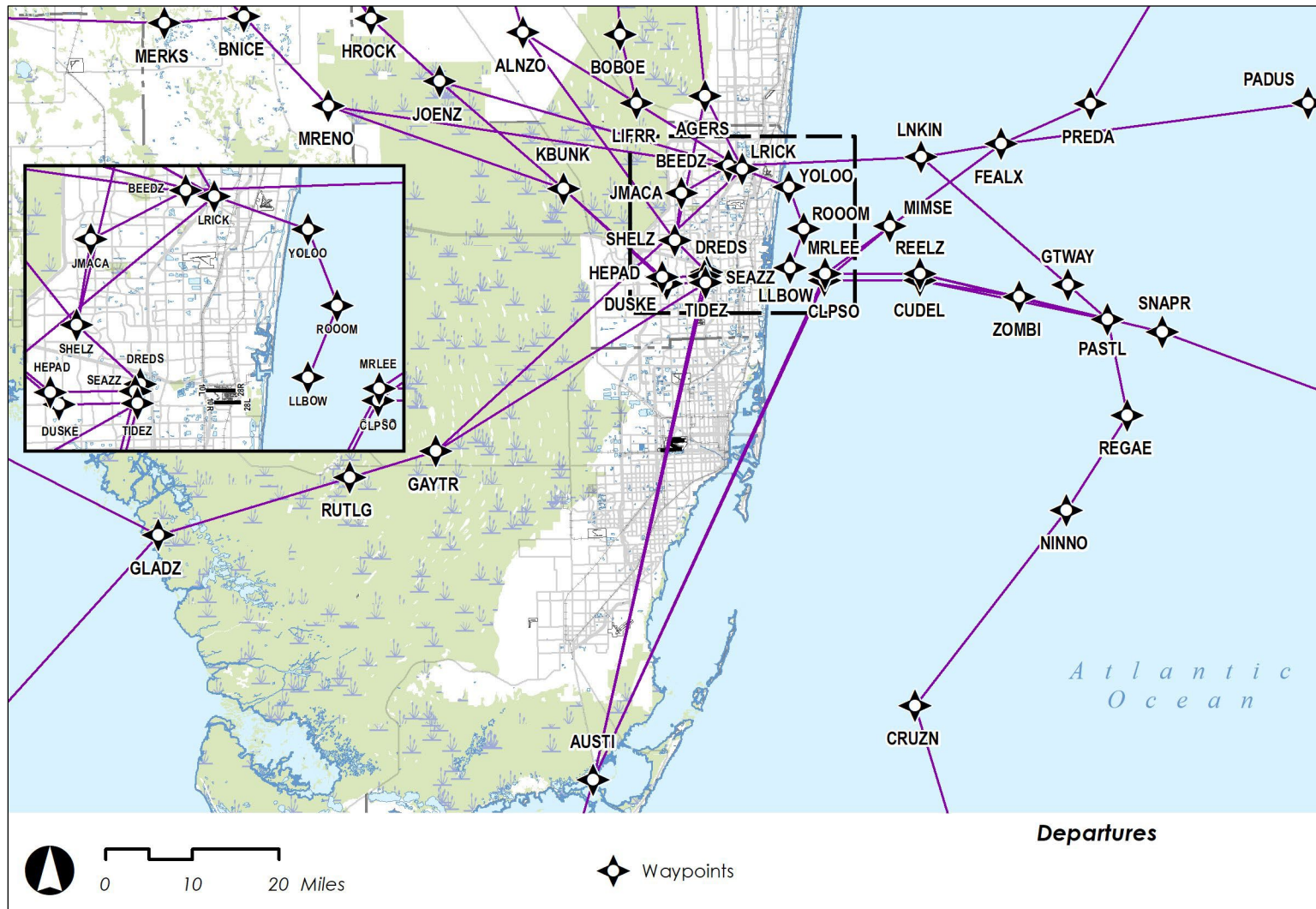
South-Central Florida Metroplex FLL Arrivals (STARS)



Source: http://www.metroplexenvironmental.com/fl_metroplex/fl_docs.html

Appendix

South-Central Florida Metroplex FLL Departures (SID)



Source: http://www.metroplexenvironmental.com/fl_metroplex/fl_docs.html

Appendix

South-Central Florida Metroplex Waypoints by Procedure

STARS | Arrivals

BHHIA THREE: 10L: [PYREX+|TWNKL+]-HULKY-KERRA-BHHIA-ADUBE-HOLID
BHHIA THREE: 10R: [PYREX+|TWNKL+]-HULKY-KERRA-BHHIA-ADUBE-BUNKR
BHHIA THREE: 28L/R: [PYREX+|TWNKL+]-HULKY-KERRA-BHHIA-ADUBE-FIPKO-BEPAC-FAMBA

CUUDA THREE: 10L/R: [MACKL+|PLAID+]-CUUDA-LOKKR-SERIF-BEPAC-WANAR
CUUDA THREE: 28L/R: [MACKL+|PLAID+]-CUUDA-LOKKR-BEKNE-QDAWG

OLAHS THREE: 10L/R: [DOPLY+|CIREX+]-OLAHS-LATNN-WAVUN-KEVEY-BEPAC-WANAR
OLAHS THREE: 28L/R: [DOPLY+|CIREX+]-OLAHS-FISHB-CRNVL

TEEKY THREE: 10L: [PCOCK+|MARCI+]-TEEKY-BANTY-HEEZE-HOLID
TEEKY THREE: 10R: [PCOCK+|MARCI+]-TEEKY-BANTY-HEEZE-BUNKR
TEEKY THREE: 28L/R: [PCOCK+|MARCI+]-TEEKY-BANTY-HEEZE-GOYLE-BEPAC-FAMBA

SIDS | Departures

AGERS ONE: 10L/R: LLBOW-ROOOM-YOLOO-LRICK-AGERS-[HURGI+]-PERTS-AARPS-MMART-ENWOD
SEAZY-[DUCEN+]
AGERS ONE: 28L/R: DREDS-SHELZ-AGERS-[HURGI+]-PERTS-AARPS-MMART-ENWOD-SEAZY-[DUCEN+]

BNICE ONE: 10L/R: LLBOW-ROOOM-YOLOO-LRICK-MRENO-BNICE-[COREA+|DOLIE+|MERKS+]
BNICE ONE: 28L: TIDEZ-DUSKE-KBUNK-MRENO-BNICE-[COREA+|DOLIE+|MERKS+]
BNICE ONE: 28R: SEAZZ-HEPAD-KBUNK-MRENO-BNICE-[COREA+|DOLIE+|MERKS+]

FEALX TWO: 10L: MRLEE-MIMSE- FEALX-[PADUS+|PREDA+|WOLFO+]
FEALX TWO: 10R: CLPSO-MIMSE-FEALX-[PADUS+|PREDA+|WOLFO+]
FEALX TWO: 28L/R: DREDS-SHELZ-JMACA-BEEDZ-LNKIN-FEALX-[PADUS+|PREDA+|WOLFO+]

GLADZ TWO: 10L/R: LLBOW-ROOOM-YOLOO-LRICK-GAYTR-RUTLG-GLADZ-[WIGNA+|MARCI+]
GLADZ TWO: 28L: TIDEZ-GAYTR-RUTLG-GLADZ-[WIGNA+|MARCI+]
GLADZ TWO: 28R: SEAZZ-GAYTR-RUTLG-GLADZ-[WIGNA+|MARCI+]

FRSBE TWO: 10L/R: LLBOW-ROOOM-YOLOO-LRICK-ALNZO-FRSBE-[WAPOM+|STYMY+]
FRSBE TWO: 28L/R: DREDS-SHELZ-ALNZO-FRSBE-[WAPOM+|STYMY+]

HROCK TWO: 10L/R: LLBOW-ROOOM-YOLOO-LRICK-JOENZ-HROCK-[KPASA+|SMELZ+]
HROCK TWO: 28L: TIDEZ-DUSKE-KBUNK-JOENZ-HROCK-[KPASA+|SMELZ+]
HROCK TWO: 28R: SEAZZ-HEPAD-KBUNK-JOENZ-HROCK-[KPASA+|SMELZ+]

LIFRR ONE: 10L/R: LLBOW-ROOOM-YOLOO-LRICK-LIFRR-BOBOE-DURRY-CLEFF-[WIXED+|BAIRN+]
LIFRR ONE: 28L/R: DREDS-SHELZ-LIFRR-BOBOE-DURRY-CLEFF-[WIXED+|BAIRN+]

MAYNR ONE: 10L: MRLEE-AUSTI-MAYNR-MCLAW-[FUNDI+|JABOX+]
MAYNR ONE: 10R: CLPSO-AUSTI-MAYNR-MCLAW-[FUNDI+|JABOX+]
MAYNR ONE: 28L: TIDEZ-AUSTI-MAYNR-MCLAW-[FUNDI+|JABOX+]
MAYNR ONE: 28R: SEAZZ-AUSTI-MAYNR-MCLAW-[FUNDI+|JABOX+]

REGAE TWO: 10L: MRLEE-REELZ-ZOMBI-PASTL-REGAE-NINNO-CRUZN-GLAMS-LRODD-[URSUS+]
REGAE TWO: 10R: CLPSO-CUDEL-ZOMBI-PASTL-REGAE-NINNO-CRUZN-GLAMS-LRODD-[URSUS+]
REGAE TWO: 28L/R: DREDS-SHELZ-JMACA-BEEDZ-LNKIN-GTWAY-PASTL-REGAE-NINNO-CRUZN-GLAMS-LRODD-[URSUS+]

SNAPR TWO: 10L: MRLEE-REELZ-ZOMBI-SNAPR-KRAFT-HEYDR-[RAJAY+|SUMAC+]
SNAPR TWO: 10R: CLPSO-CUDEL-ZOMBI-SNAPR-KRAFT-HEYDR-[RAJAY+|SUMAC+]
SNAPR TWO: 28L/R: DREDS-SHELZ-JMACA-BEEDZ-LNKIN-GTWAY-SNAPR-KRAFT-HEYDR-[RAJAY+|SUMAC+]

To view the active published FAA full procedure plates, please follow the link here:

https://www.faa.gov/air_traffic/flight_info/aeronav/procedures/application/?event=procedure.results&tab=charts&nasrid=FLL#searchResultsTop

Appendix

Noise Information

Ways to File an Aircraft Noise Comment

To file a formal aircraft noise comment, choose one of the following options:

Online: Complete the [Noise Comment Form](#) then select the Submit button.

By Phone: Call the Noise Comment Hotline at 954-359-2366

Download the new [Noise Comment Web App](#) and use this platform to file a complaint.

Using the New Noise Comment Web App to file a noise complaint.

From a mobile phone, click this link [Noise Comment Web App](#) and download to an iPhone or Android phone.

The link is **only** accessible from a mobile phone. It is **not** available in the iOS or Google Play App stores. It is **only** available from the webpage.

Noise Comment Web App Instructions:

Save the app to your home screen using the link above.

From an iPhone: Tap the box with the vertical arrow and select add to the home screen.

From an Android phone: Tap the 3 Menu dots and select add to the homepage.

Go to your home screen and open the new noise comment web app.

Enter your comment information following Steps 1-5 and click Submit.

Note: After using the noise comment web app the first time, user information is saved and does not need to be re-entered. You can submit additional comments by tapping "Submit Comment."

If you have questions or comments about the app, please contact the Aviation Department at 954-359-6181

Prepared by Harris Miller Miller & Hanson Inc. on behalf of Broward County Aviation Department.