

Fort Lauderdale-Hollywood International Airport April 2013 Traffic Recap

Total traffic for April 2013 was 2,098,840, down .5% over last year. Domestic traffic was down .1% and international traffic was down 2.7%.

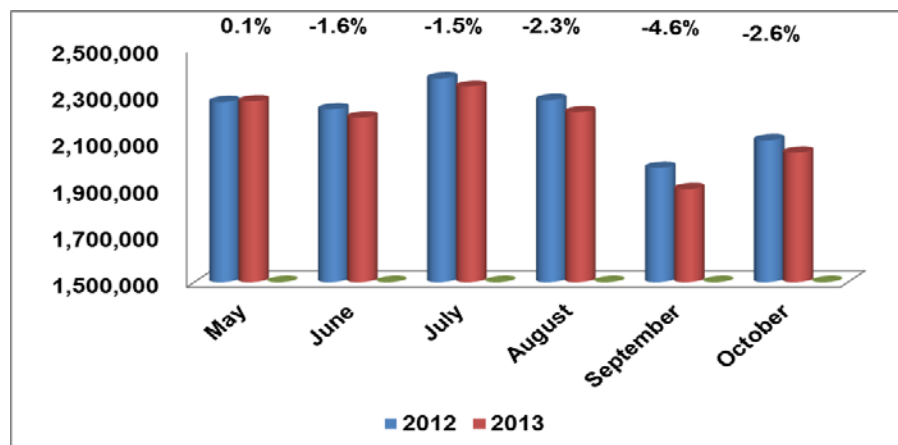
Although April seats were up 2% over last year, load factors were slightly below historical averages. Also contributing to the decrease in passenger traffic was the occurrence of the Easter holiday travel period. Last year, Easter was in April. It was in March this year, therefore, the year-over-year comparison reflects the month-over-month imbalance.

April commercial operations totaled 19,951, down 1.4% over last year. General Aviation totaled 3,300, down .4%. Total aircraft movements for the period were 23,251, down 1.3%.

Leading the way in positive growth for the month was AirTran, up 31.0%; Air Canada, up 13.9%; JetBlue, up 6.9%; and United up 4.4%. FLL's regional airline Silver Airways has increased operations significantly and carried 25,697 passengers, up 52.1%. To put Silver into perspective, the airline carried the same number of passengers as Caribbean and more than Alaska and Frontier combined.

On the negative side, Virgin was down 21.2%, American was down 9.6%, Spirit was down 2.9%, and Southwest was down 2.8%.

Traffic for the next few months is expected to remain flat or down slightly. The chart below illustrates scheduled available seats and the year over year % change.



The reduction in capacity is primarily the result of Spirit's allocation of capacity to other markets and the Southwest/AirTran consolidation. Both factors combine for significant reductions in available seats.

On the positive side, JetBlue continues to expand at FLL. In the months to come, the airline will add new service to Medellin, Colombia; San Jose, Costa Rica; Lima, Peru; Worcester, MA; and Port Au Prince, Haiti.

Additional new service coming this year includes the much anticipated arrival of Norwegian Air Shuttle and the Boeing 787 Dreamliner. Norwegian will start service in November with four weekly flights from Scandinavia. This operation alone will add approximately 8,000 passengers per month.

Below is the year to date traffic and market share of our top carriers.

JetBlue	1,541,846	17.7%	US Airways	661,883	7.6%
Spirit	1,419,220	16.3%	AirTran	485,735	5.6%
Southwest	1,262,533	14.5%	American	465,843	5.4%
Delta	1,081,611	12.4%	Air Canada	290,021	3.3%
United	770,160	8.8%	Virgin	133,572	1.5%