

Fort Lauderdale-Hollywood International Airport April 2014 Traffic Recap

Total passenger traffic for the month of April was 2,192,566, up 4.5 percent over April 2013. Domestic traffic was up 1.1 percent and international traffic increased by 23.5 percent.

Commercial operations totaled 19,748, down 1 percent over last year. General Aviation totaled 3,245, down 1.7 percent. Total aircraft movements for the period were 22,993, down 1.1 percent.

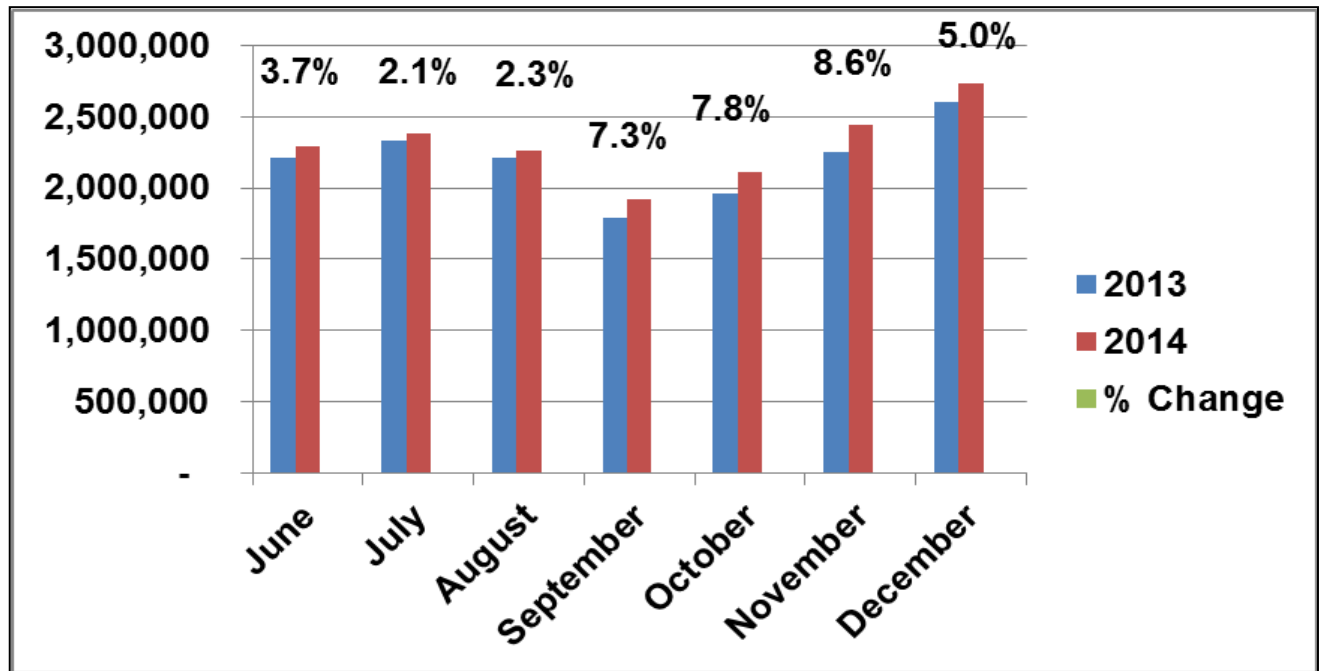
Most U.S. and international carriers showed positive growth for the month. The chart below depicts the month-over-month percentage change for FLL's major carriers.

Airline	% Change
Air Canada	18.9%
Avianca	16.9%
Frontier	14.7%
JetBlue	12.3%
Westjet	8.9%
Virgin	8.8%
Spirit	8.5%
Delta	8.1%
US Airways	7.2%
American	6.7%
United	-6.2%
Southwest	-8.6%

Traffic should continue to improve throughout the remainder of the year. New domestic and international service includes:

- JetBlue to Pittsburgh, Las Vegas, Jacksonville and Cartagena, Colombia in October
- Norwegian Air Shuttle to London in July
- Copa arrives from Panama City, Panama in July
- Silver to Jacksonville in August
- Southwest to Dallas (Love Field) in November
- Spirit to New Orleans in August and Houston Intercontinental in September
- Frontier to Cleveland in June and Washington Dulles in September

The chart below illustrates the month-over-month growth in total scheduled available seats for the remainder of the year.



Year to date market share of FLL's top carriers is illustrated below.

