

19227
AIRPORT DIAGRAM

FORT LAUDERDALE/HOLLYWOOD INTL (FLL)
 AL-744 (FAA)
 FORT LAUDERDALE, FLORIDA

D-ATIS
 135.0
 FORT LAUDERDALE TOWER
 119.3 257.8
 GND CON
 121.4
 CLNC DEL
 128.4
 CPDLC



JANUARY 2015
 ANNUAL RATE OF CHANGE
 0.1° W

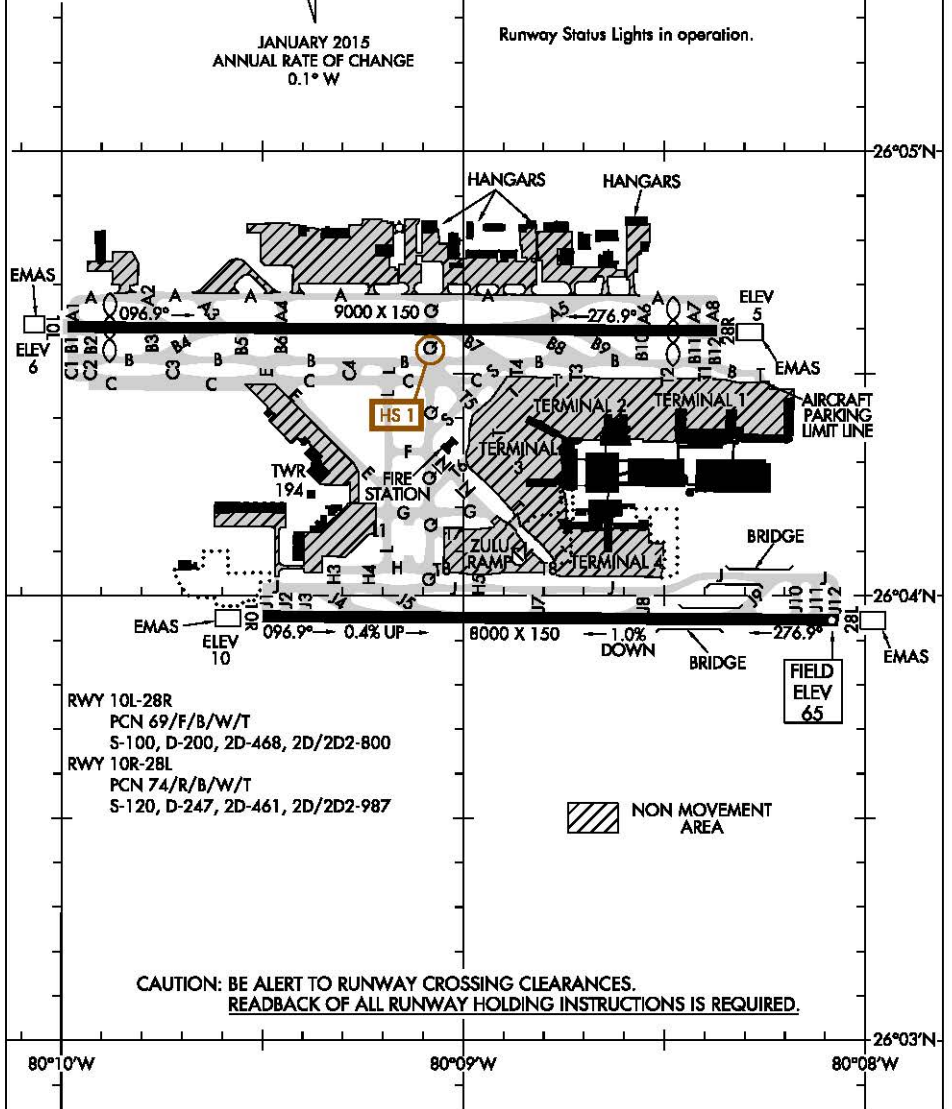
212 A

ASDE-X in use. Operate transponders with altitude reporting mode and ADS-B (if equipped) enabled on all airport surfaces.

Runway Status Lights in operation.

SE-3, 15 AUG 2019 to 12 SEP 2019

SE-3, 15 AUG 2019 to 12 SEP 2019



RWY 10L-28R
 PCN 69/F/B/W/T
 S-100, D-200, 2D-468, 2D/2D2-800
 RWY 10R-28L
 PCN 74/R/B/W/T
 S-120, D-247, 2D-461, 2D/2D2-987

NON MOVEMENT AREA

CAUTION: BE ALERT TO RUNWAY CROSSING CLEARANCES.
READBACK OF ALL RUNWAY HOLDING INSTRUCTIONS IS REQUIRED.

19227
AIRPORT DIAGRAM

FORT LAUDERDALE, FLORIDA
 FORT LAUDERDALE/HOLLYWOOD INTL (FLL)