

Fort Lauderdale-Hollywood International Airport February 2012 Traffic Recap

Assisted by leap year's extra day, total traffic for February 2012 was 2,006,399, up 4.8% over February last year. If the month is adjusted to last year's comparable 28 days, traffic growth remained positive.

February commercial operations totaled 19,242, up 2.1% over last year. General Aviation totaled 3,440, down 7.5%. Total aircraft movements for the period were 22,682, up .5% over last year.

Leading the way in traffic growth were the following airlines:

- Virgin +39.3%
- American +29.4%
- Continental +14.9%
- JetBlue +12.6%
- Southwest + 4.6%

These carriers saw negative traffic:

- Spirit - 3.4%
- Airtran - 6.9%
- Delta - 6.6%

On the international side, Canada was very strong with traffic up 21.3% over February last year. Condor continued to do very well and finished the month with a load factor of 93%.

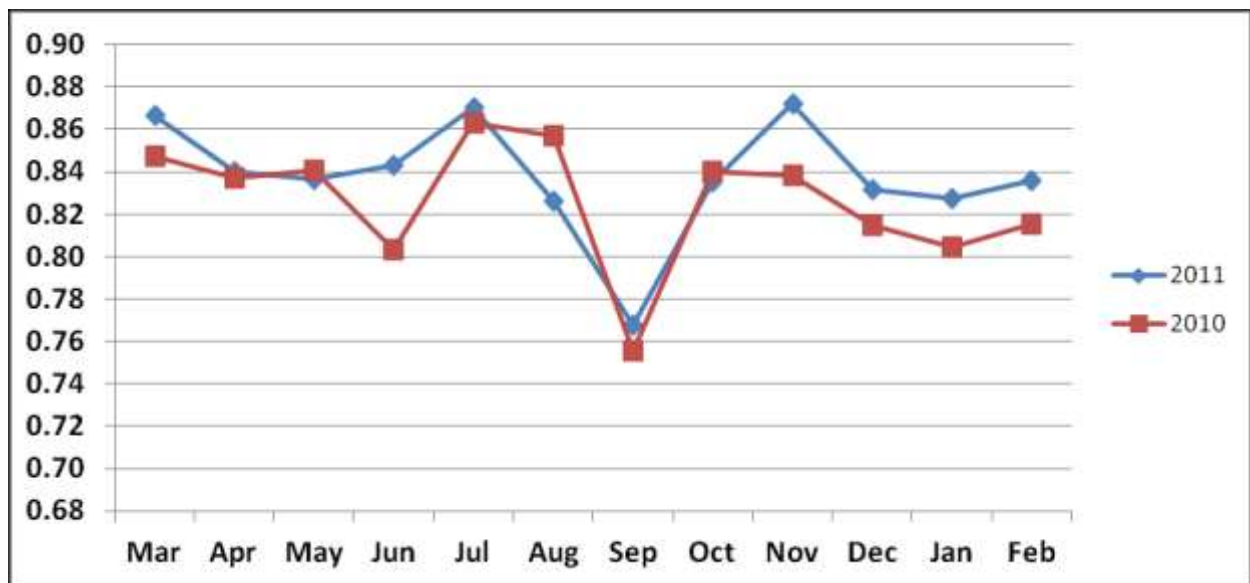
A significant development is the increase in load factor for the past several months. Prior to that time, load factors were leveling off on a year over year comparison. From October 2011 to February 2012, the average load factor increased by 2%. Seats for the period were down 1.7% but total traffic was up .5%.

This relatively small increase has a huge impact on total traffic. A 2% increase on a 150 seat aircraft is 3 passengers. At an average of 600 flights a day, that is 5,400 passengers a day, 54,000 per month, and 648,000 per year!

Southwest Airlines is a good example of this impact. Southwest total seats for February were up .2% but their total traffic was up 4.6%. Again, the impact of load factor cannot be overstated.

The chart below illustrates the recent improvement in load factor.

**12 Months Ending Feb
Load Factor Comparison
Published Seats and Airline Reports**



As mentioned in previous discussions, Spirit's reduction in capacity continues to impact total traffic. The positive trend in load factor coupled with addition of new service should help to offset Spirit's impact.

Upcoming new service includes:

- JetBlue to Kingston, Jamaica in April and Bogota, Colombia in May
- Spirit to Denver starting in May
- Air Tran to San Juan, Puerto Rico in May
- Alaska Airlines will begin service to Seattle in July

Total available seats for the next few months are depicted below. If the above trend continues, traffic should be up from 2% to 4% for the period.

| Month | % Change |
|-------|----------|
| Mar | 1.1% |
| Apr | -2.0% |
| May | 0.7% |
| Jul | 1.4% |
| Jun | 0.8% |
| Avg | 0.4% |

January to February 2012 passenger traffic and market share data for the top 10 carriers are below.

| | | |
|------------|---------|-------|
| Spirit | 699,641 | 17.2% |
| JetBlue | 680,228 | 16.8% |
| Southwest | 625,513 | 15.4% |
| Delta | 507,538 | 12.5% |
| US Airways | 306,903 | 7.6% |
| United | 287,099 | 7.1% |
| American | 235,577 | 5.8% |
| Airtran | 182,789 | 4.5% |
| Air Canada | 134,641 | 3.3% |
| Virgin | 77,054 | 1.9% |