

Fort Lauderdale-Hollywood International Airport July Traffic Recap

Total traffic for July 2012 was 2,066,416, up 1.4% over July last year. Domestic traffic was 1,727,839, up 1.7%. International traffic was 338,577, down .2% over last year.

July was the 2nd consecutive month of positive growth in total passengers and the busiest July on record.

July commercial operations totaled 19,267, down .2% over last year. General Aviation totaled 2,460, down 19.3% over last year. Total aircraft movements for the period were 21,727, down 2.8% over last year.

Airlines with positive growth for the month were:

- AirTran + 20.0%
- JetBlue + 18.3%
- Delta + 7.8%
- United + 3.3%.

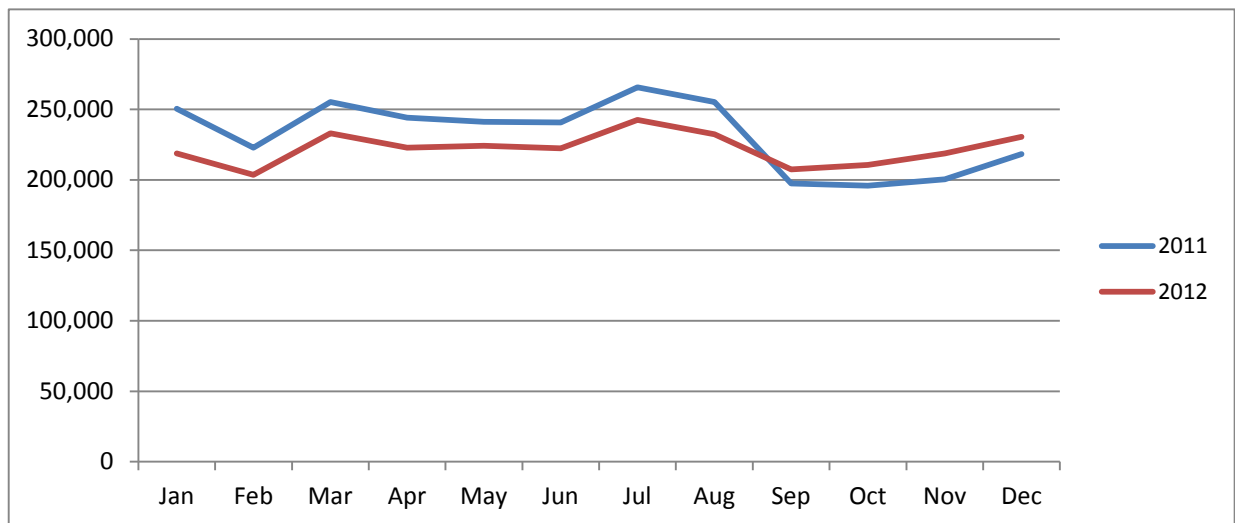
July saw the arrival of Alaska Airlines who finished the month with a 98% load factor.

Carriers on the negative side for July were:

- Spirit led the losses and was down 12.4%
- US Air down 4.5%
- American down 3.8%
- Southwest down 1.5%.

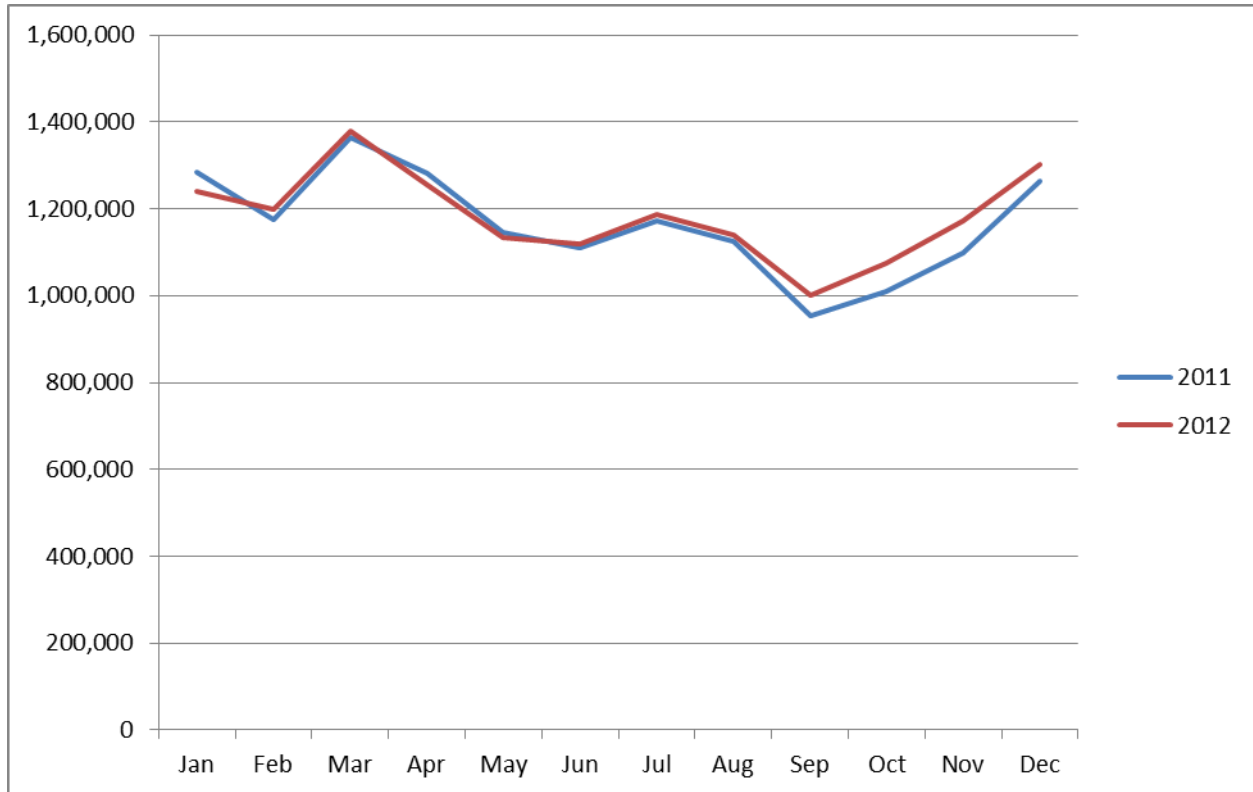
As mentioned in previous recaps, Spirit's reduction in capacity since mid-2011 has had a significant negative impact on airport traffic. The chart below shows Spirit's available scheduled one-way seats for 2012. Capacity increases significantly beginning in September. For the first eight months of the year, Spirit's scheduled capacity was down an average of 8.9%. For the months of September through December, the average capacity is forecasted to be up 6.8%.

Spirit schedule available one-way seats



In general, Spirit's reduction in capacity has been offset by significant increases by other carriers, particularly JetBlue, AirTran, and Delta. The chart below illustrates this point. If you compare the two graphs, you can see that increases by other carriers have offset Spirit's reductions for the first eight months of the year. Likewise, similar growth curves on both charts for the last four months of the year, further illustrate the impact of Spirit on overall airport capacity.

Total available one-way schedule seats



The chart below depicts the increase in available seats discussed above.

Month	% Change
Sep	5.0
Oct	6.3
Nov	6.9
Dec	3.1

Below is the Year-To-Date airline traffic and market share.

Spirit	2,587,805	18.0%
JetBlue	2,498,234	17.4%
Southwest	2,177,630	15.2%
Delta	1,896,332	13.2%
United	1,134,278	7.9%
US Airways	1,018,109	7.1%
American	764,557	5.3%
AirTran	716,161	5.0%
Air Canada	334,244	2.3%
Virgin	249,997	1.7%