

## Fort Lauderdale-Hollywood International Airport June 2014 Traffic Recap

Total passenger traffic for June 2014 was 1,940,390, up 3.5 percent over June 2013. Domestic traffic was down 1.1 percent and international traffic increased by 30.8 percent.

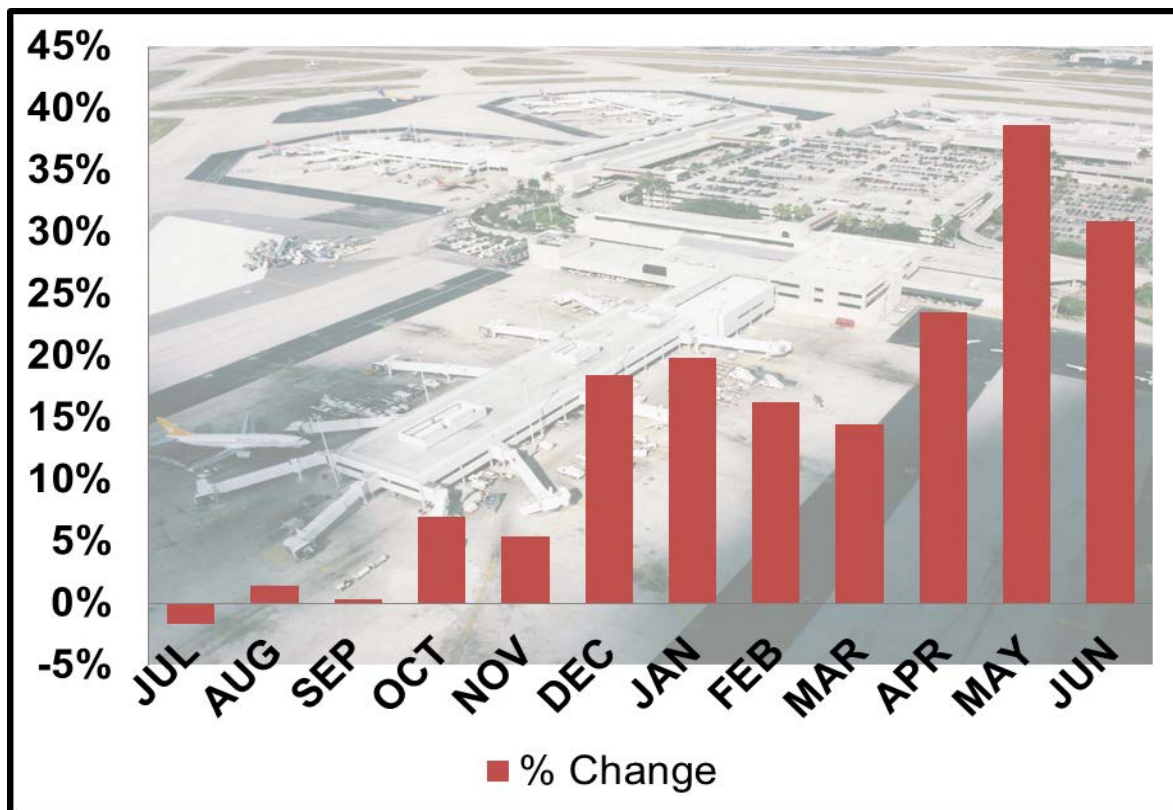
Commercial operations totaled 17,538, up 1.9 percent over last year. General Aviation totaled 2,642, up 2 percent. Total aircraft movements were 20,180, up 1.9 percent.

The table below depicts June's passenger growth for FLL's major carriers.

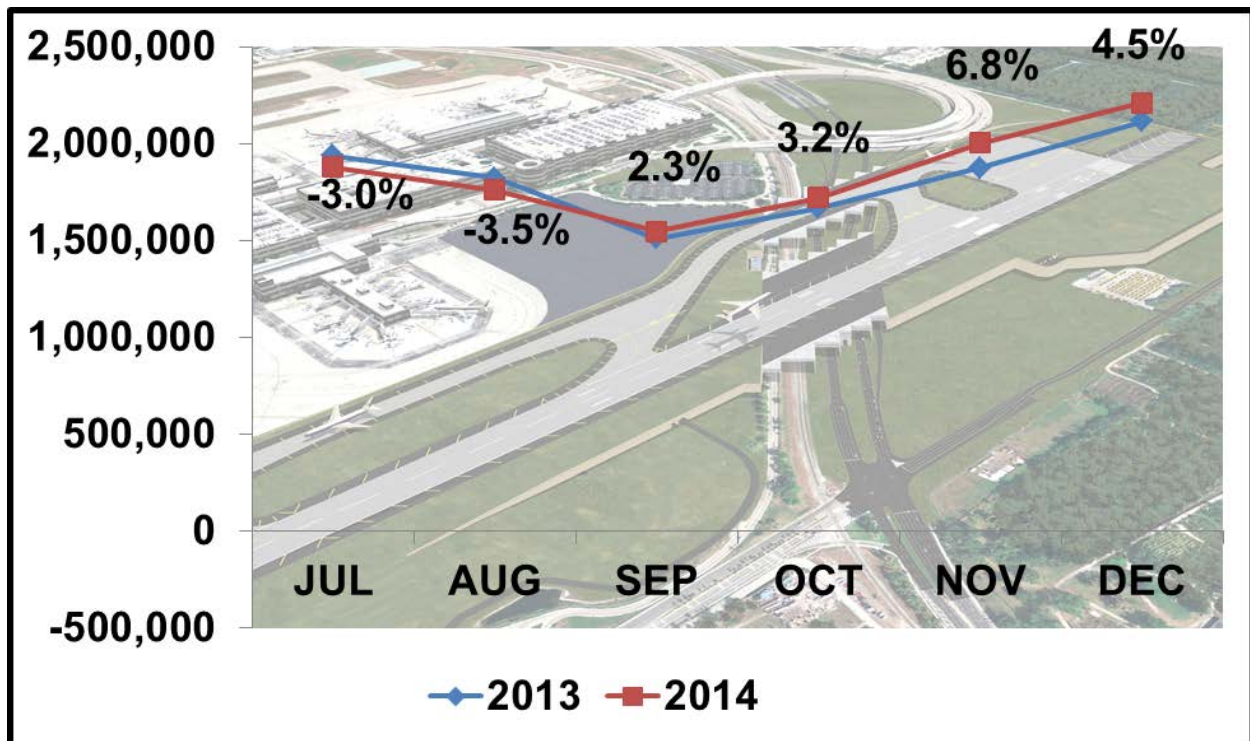
Airline	% Change	Absolute
JetBlue	18.8	66,290
Southwest/AirTran	-2.8	(11,037)
Spirit	4.5	16,013
Delta	4.9	15,149
US Airways	-5.8	(7,361)
United	-11.6	(16,348)
American	-5.2	(4,726)
Air Canada	29.1	5,524
Virgin America	2.8	683
WestJet	27.7	2,375

Although domestic traffic has been down for the past year, international traffic continued to grow at an amazing pace and contributed to the overall growth of total passenger traffic. International traffic has shown positive growth since last August and has increased by double digit growth for the last seven months.

The chart below illustrates the growth in internal traffic for the last 12 months.



Domestic traffic should begin to improve in September and throughout the remainder of the calendar year as new domestic service by JetBlue, Silver, Spirit, Southwest, and Frontier takes effect. The chart below illustrates the projected growth.



The table below shows the year-to-date passenger growth and market share for FLL's major carriers.

Airline	2013	2014	% Change	Absolute	% Share
JetBlue	2,262,680	2,517,887	11.3%	255,207	19.8%
Southwest/AirTran	2,563,884	2,371,354	-7.5%	(192,530)	18.6%
Spirit	2,125,963	2,279,020	7.2%	153,057	17.9%
Delta	1,551,296	1,622,602	4.6%	71,306	12.7%
US Airways	931,575	900,912	-3.3%	(30,663)	7.1%
United	952,559	898,519	-5.7%	(54,040)	7.1%
American	642,956	585,846	-8.9%	(57,110)	4.6%
Air Canada	334,903	399,853	19.4%	64,950	3.1%
Virgin America	183,351	188,842	3.0%	5,491	1.5%
WestJet	134,109	143,647	7.1%	9,538	1.1%