

## Fort Lauderdale-Hollywood International Airport Traffic Update June 2015

Total passenger traffic for June 2015 was 2,135,608, up 10.1 percent over June last year. Domestic traffic increased by 7.2 percent. International traffic was up 22.7 percent.

June 2015 marked the first time that total passenger traffic in June exceeded 2 million passengers. It was the 19<sup>th</sup> consecutive month of double-digit growth in international passenger traffic. It was also the 15<sup>th</sup> consecutive month of growth in total passengers.

### Rankings

The most recent Airports Council International (ACI) data ranked FLL 2nd among large hub airports in international traffic growth up 21.7 percent. FLL also ranked 2nd in total traffic growth, up 8.5 percent (12 months ending June 2015). FLL ranks 2nd in Florida in international service behind Miami International Airport.

In FLL's top 5 international markets, FLL ranks:

- Canada – 1<sup>st</sup> in flights from Canada to Florida (33 percent share).
- Colombia – 2<sup>nd</sup> (large U.S. airports) in flights to Colombia.
- Bahamas – 1<sup>st</sup> in flights to the Bahamas.
- Jamaica – 2<sup>nd</sup> in flights to Jamaica.
- Haiti – 2<sup>nd</sup> in flights to Haiti.

### Operations

Air Carrier operations were 18,970, up 8.2 percent over June last year. General Aviation was 2,971, up 12.5 percent. Total aircraft operations were 21,941, up 8.7 percent over Jun 2014.

### Passenger Activity and Market Share

The table shows June's change in passenger activity and market share for FLL's top 10 air carriers.

	2014	2015	ABS	% Change	% Share
<b>JetBlue</b>	418,117	485,929	67,812	16.2	22.8
<b>Spirit</b>	373,068	410,128	37,060	9.9	19.2
<b>Southwest</b>	384,394	397,209	12,815	3.3	18.6
<b>Delta</b>	244,727	262,415	17,688	7.2	12.3
<b>US Airways</b>	118,765	115,242	-3,523	-3.0	5.4
<b>United</b>	124,420	109,961	-14,459	-11.6	5.2
<b>American</b>	85,489	103,286	17,797	20.8	4.8
<b>Allegiant</b>	17,749	36,815	19,066	107.4	1.7
<b>Silver</b>	22,769	34,225	11,456	50.3	1.6
<b>Air Canada</b>	24,512	31,800	7,288	29.7	1.5

## New Destinations

Upcoming new international service includes:

- Dynamic Airways now offers daily service to Caracas, Venezuela.
- JetBlue to Mexico City – Oct. 2015, Providenciales (Turks and Caicos) in Nov. 2015 and Quito, Ecuador in Q1 2016.

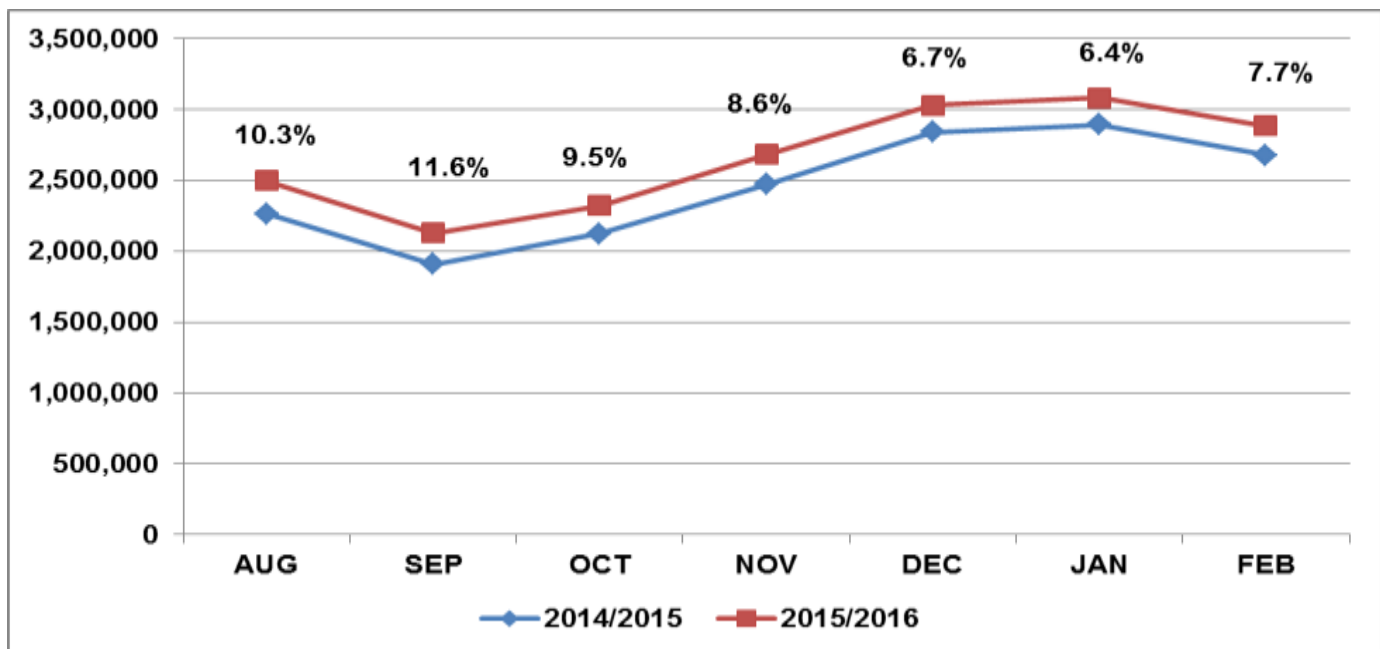
New domestic service includes:

- JetBlue - Baltimore, MD; Charleston, SC; Philadelphia, PA; and, Albany, NY in Dec. 2015.
- Southwest – Washington DC (Dulles) in Aug. 2015, Minneapolis, MN in Jan. 2016.
- Allegiant - Portsmouth, NH; Akron, OH; and Rochester, NY in Oct. 2015; San Antonio, TX in Nov. 2015.

## Traffic and Seat Growth

Traffic will continue to increase for the remainder of 2015 and through the first quarter of 2016. Calendar year 2015 should exceed 26 million passengers.

The chart shows the month- over-month increase in schedule seats. Passenger traffic should respond accordingly.



## Expansion Update

- South Runway - opened September 2014.
- Terminal Modernization - underway with estimated completion of Terminals 1, 2, and 3 in mid-2017.
- Terminal 1, Concourse A – 5 international gates estimated to be completed in mid-2017.
- Terminal 4 – 12 new international gates and 2 domestic gates. First phase of west expansion opened on July 14<sup>th</sup> with two gates in the G concourse. East expansion expected to be completed late 2017.