

Fort Lauderdale-Hollywood International Airport January 2018

2018 Off to a Good Start

January Traffic

- Total traffic: 3,030,577, up 8.1%
- Domestic traffic: 2,303,790, up 6.3%
- International traffic: 726,787, up 14.2%

Year End 2017 / December Airports Council International Data (not final)

FLL – Ranked

- Total traffic: 32.5M, up 11.3%
- Domestic traffic: 25.3M, up 9.4%
- International traffic: 7.2M, up 18.6%

- 1st in total traffic growth, up 11.3%
- 19th in total traffic, jumped Philadelphia (29.6M) and La Guardia (29.4M)
- 12th in international traffic

January Departures up 11.6% Since 2016

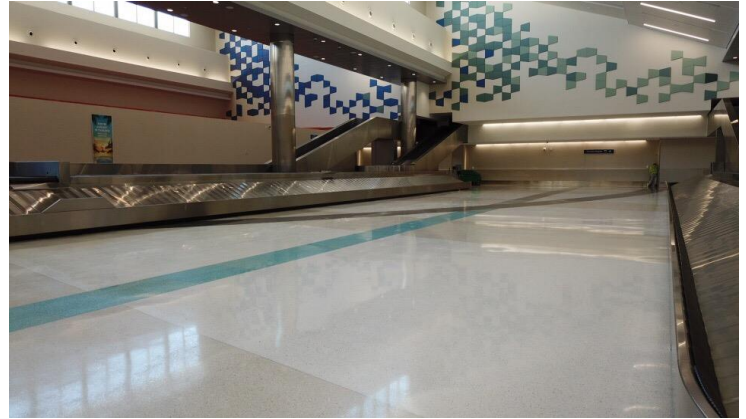
- 14 more daily departures than January 2017
- 40 more daily departures than January 2016

7 out of Top 10 Carriers Show Growth in January

Airline	2017	2018	% Change	% Share
JetBlue Airways	704,639	716,415	1.7%	23.6%
Southwest Airlines	499,413	642,339	28.6%	21.2%
Spirit Airlines	540,817	581,744	7.6%	19.2%
Delta Air Lines	267,879	296,679	10.8%	9.8%
American Airlines	201,823	194,234	-3.8%	6.4%
United Airlines	182,495	178,303	-2.3%	5.9%
Air Canada	89,026	90,761	1.9%	3.0%
Allegiant Air	56,611	66,305	17.1%	2.2%
Azul	21,289	30,663	44.0%	1.0%
Virgin America	39,092	29,260	-25.2%	1.0%

Phase 1 of the New Baggage Claim in Terminal 4 Opening on February 26, 2018

The first phase of the new baggage claim facility for international passengers in Terminal 4 will open on Monday, February 26, 2018. The new facility will almost double the existing baggage claim capacity and significantly reduce the time international passengers spend waiting for their baggage. Please see the photos below.



New Service

February: Spirit to Columbus
March: Southwest to Aruba, Spirit to Richmond and Guayaquil (Ecuador), JetBlue to Atlanta
April: Spirit to Seattle and Cap Haitien (Haiti)
May: Azul to Recife, Spirit to St. Croix
June: JetBlue to Grand Cayman and Santiago (DR)
July: Southwest to San Antonio

More Growth for 2018

FLL ranks 3rd among large hub airports for growth in scheduled available seats from Jan-Jun 2018, up 8.1%, and 2nd for increase in departures, up 7.2%.