

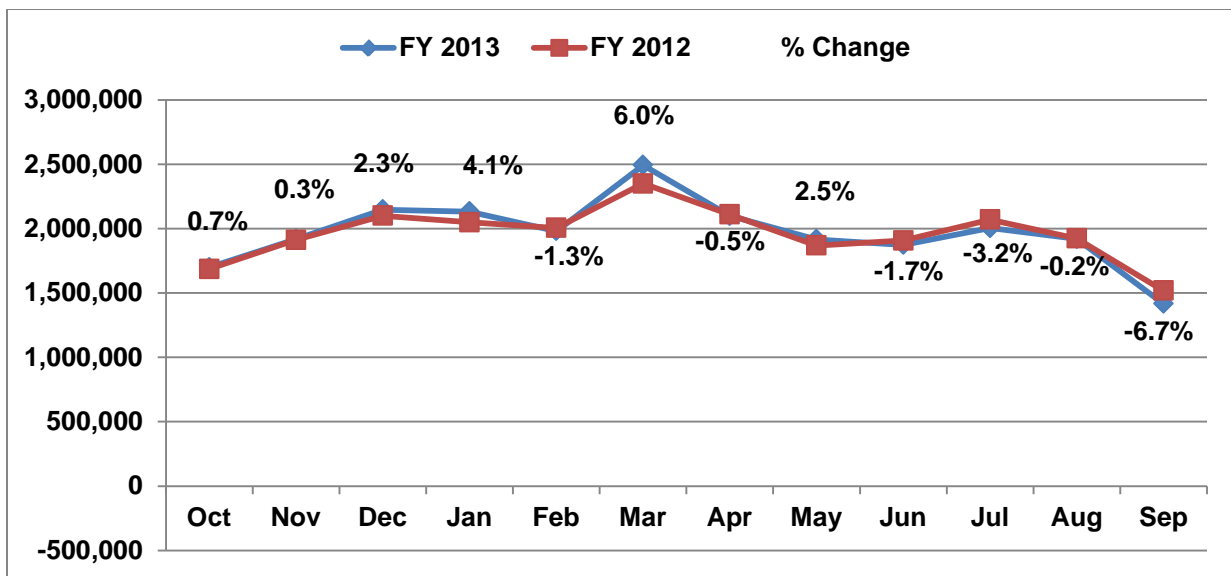
## Fort Lauderdale-Hollywood International Airport September / Fiscal Year 2013 Traffic Recap

Total traffic for September 2013 was 1,417,101, down 6.7% over last year. Domestic traffic was down 7.8% and international traffic was up .3%.

September commercial operations totaled 14,013, down 11.7% over last year. General Aviation totaled 2,332, up 9.4%. Total aircraft movements for the period were 16,345, down 9.2%.

Total passenger traffic for Fiscal Year (FY) 2013 was 23,601,226, up .4% over FY 2012. Domestic traffic was up .3% and international traffic was up .9%.

The chart below indicates the month over month percent change in traffic for FY 2013 vs. FY 2012. The chart will also give a sense of seasonality and peak traffic months. The fiscal year runs from October 1 through September 30.



Passenger traffic for FY 2013 was impacted primarily by the Southwest/AirTran merger and a reduction in capacity by Spirit Airlines. On the positive side, the year had several new destinations by existing and new carriers.

Airline	Destination	Date
JetBlue	Providence, RI	Nov-12
United	Washington Dulles	Nov-12
Allegiant	Ashville, NC	Nov-12
Silver	Orlando, FL	Jan-13
United	San Francisco, CA	Mar-13
JetBlue	Medellin, Colombia	Jun-13
JetBlue	San Jose, Costa Rica	Jun-13
Frontier	Trenton, NJ	Jun-13

US carriers that showed positive growth for FY 2013 include:

- AirTran up 25.5%
- JetBlue up 6%
- US Airways up 3.1%.

US airlines on the negative side include:

- Virgin America down 14.3%
- Southwest down 9.6%
- Delta down 4.3%
- Spirit down 2%
- American down 1.6%

International carriers that experienced growth for the period were:

- Air Transat up 56.3%
- Air Canada up 8.1%
- Bahamasair up 3.1%.

To recap other international carriers:

- Caribbean down 18.4%
- Canjet down 38%
- Avianca was flat

Traffic will begin to improve for FY 2014. JetBlue will offer new service in November and December. The arrival of Norwegian Air Shuttle from Scandinavia in November will have a significant positive impact on traffic. Additionally, the merger/consolidation of Southwest/Airtran has begun to stabilize. Spirit Airlines will increase capacity an average of 3% per month for the next five months.

Below is the FY 2013 ranking and market share of FLL's top carriers.

<b>Airline</b>	<b>Passengers</b>	<b>Share</b>
JetBlue	4,405,708	18.7%
Spirit	4,268,516	18.1%
Southwest	3,171,173	13.4%
Delta	2,954,884	12.5%
United	1,721,159	7.3%
US Airways	1,699,738	7.2%
AirTran	1,500,015	6.4%
American	1,180,999	5.0%
Air Canada	531,563	2.3%
Virgin	340,599	1.4%