

TERMINAL ONE T1

A *Centro de Formação*
SARAH MORRIS
Ceramic Tile, 2017 • Concourse A

B *Chasing Armadillos*
SUSAN HARLAN
Tapestry, 1989 • Baggage Claim

C *Cloudscape*
VOLKAN ALKANOGLU
Sculptural Play Area, 2017 • Concourse A

D *Idea Horizon*
LIAM GILLICK
Glass Curtain Wall Design, 2003 • Ticketing & Baggage Claim Levels

E *Gateway to the South*
ELIZABETH A. BUSCH
Tapestry, 1990 • Baggage Claim

F *River of Grass*
CAROLYN BRAAKSMA
Terrazzo Floor Design, 2003 • East Mezzanine

G *Stone and Glass Gardens*
ALICE ADAMS
Sculptural Environment, 2003 • Ticketing and Baggage Claim Levels

H *Sunrise to Sunset*
GORDON HUETHER
Art Glass, 2017 • International Arrivals, Meet and Greet Area

I *Vendor with Walkman*
DUANE HANSON
Painted Bronze with Accessories, 1990 • Baggage Claim

J *Wavescape*
PAUL DEMARINIS
Sound Art, 2003 • Pedestrian Bridge to Hibiscus Garage

K *Wavelength*
EMILY WHITE
Painted Aluminum, 2017 • Concourse A

TERMINAL TWO T2

L *Lay of the Land*
PAM BEYETTE
Mosaic Tile & Terrazzo Floor Design, 2010 • Entry Vestibules, Exterior

M *Cirri*
PATRICK MAROLD
Aluminum and Painted Steel Strap, 2021 • Concourse D

Musical Warning Beacons / Talking Vestibules
JIM GREEN
Sound Art, 2003 • Entry Vestibules, Baggage Claim

N *Florida Envelope Series*
MILES BATT
Acrylic Painting (series), 1991 • Departures Level (Coming Soon)

O *SkyWaves*
LAURIE LUNDQUIST
Bridge Design, 2017 • Pedestrian Bridge to Palm Garage

Terminal Two Art Gallery
South Florida Artists Showcase • Departures Level

En Plane Air
Youth Art Exhibition • Departures Level

RENTAL CAR CENTER R

P *Luminous Portals*
JAMES CARPENTER
LED Light Portals, 2005 • Entry Vestibules

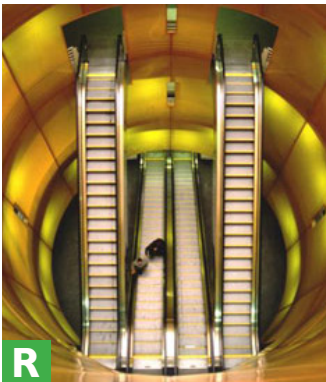
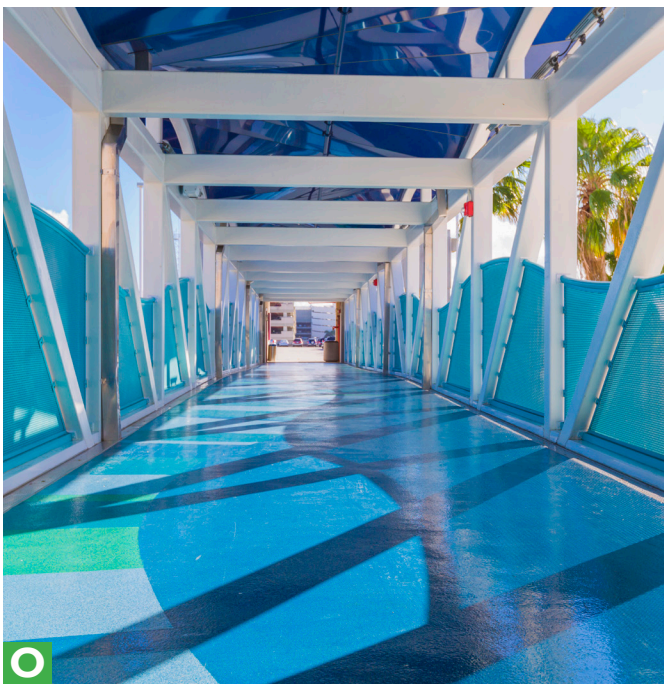
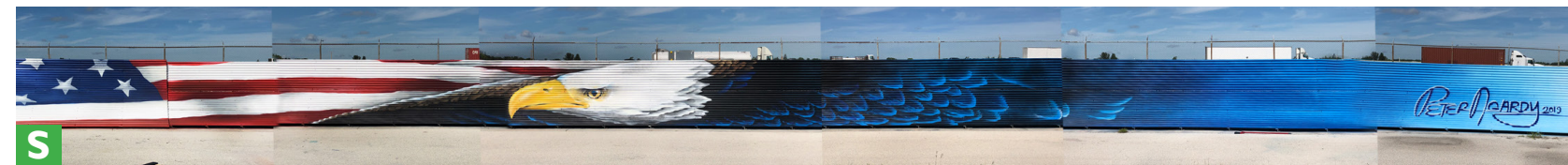
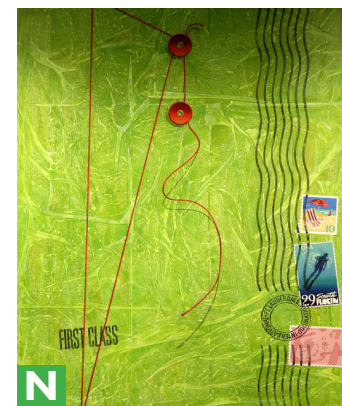
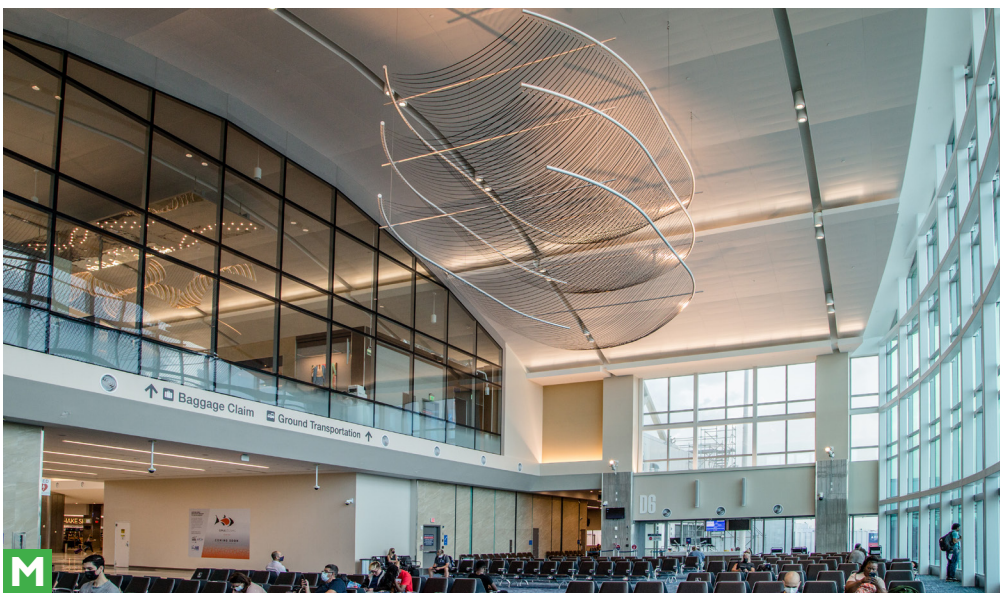
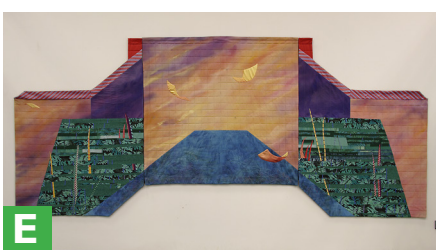
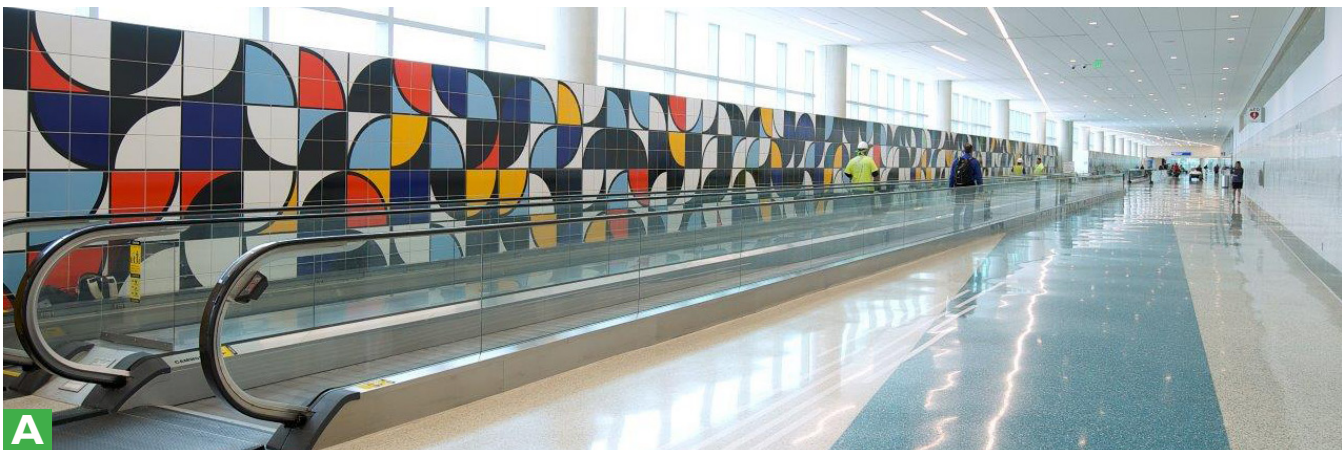
Q *Mangrove Islands*
THOMAS H. SAYRE
Terrazzo Floor Design, 2005 • Levels 2, 3 and 4

HIBISCUS GARAGE H

R *Light Cylinders*
JODY PINTO
Fiberglass, 2001 • Escalator Enclosures

NORTH RUNWAY

S *In Flight*
PETER AGARDY
Painted Mural, 2019 • Runway Jetblast Deflector



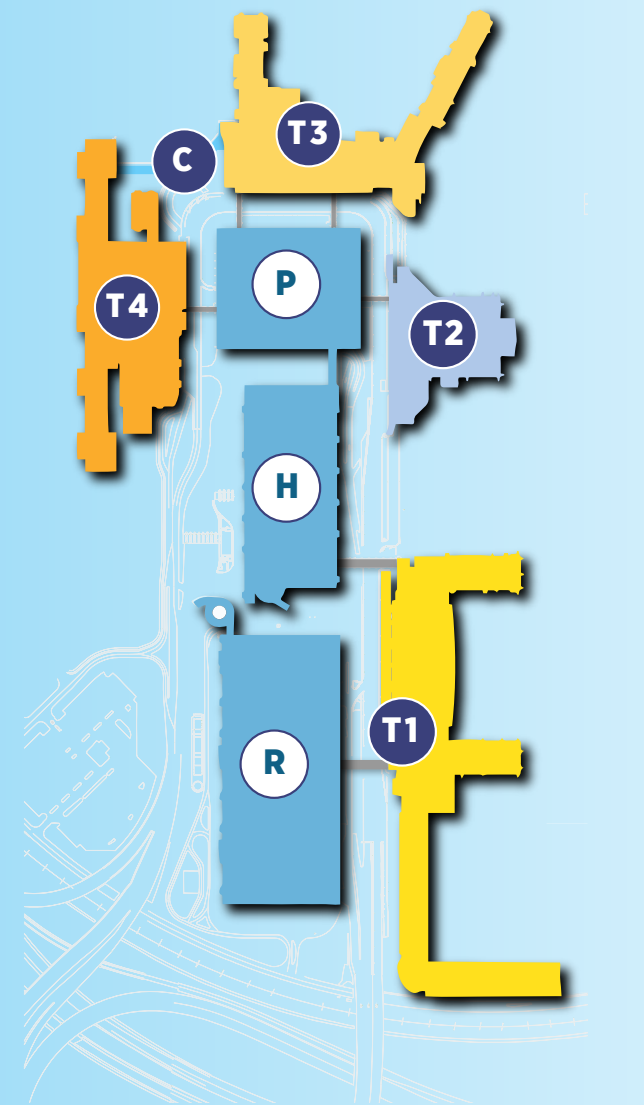
FORT LAUDERDALE -
HOLLYWOOD INTERNATIONAL
AIRPORT'S PUBLIC ART

This guide features public art by local, national, and internationally acclaimed artists on display at Broward County's Fort Lauderdale-Hollywood International Airport (FLL), which has participated in Broward County's award-winning Public Art & Design Program since its inception in 1976.

FLL's terminals include paintings, photographs, sculptures, mosaic and terrazzo floors, and video, light, and sound artworks. Three of these works were recognized by the Americans for the Arts Public Art Network's Year in Review that highlights the best examples of public art in the country. Art exhibitions featuring local artists, youth, and airport employees can also be found in the airport terminals.

This captivating collection, along with more than 200 public artworks in locations throughout Broward County, creatively reflects the spirit and energy of South Florida and its commitment to the cultural arts.

Whether you are in Broward County for business or pleasure, we hope that you will discover and enjoy FLL's public art collection with the help of this brochure and let it serve as your guided tour!



TERMINAL THREE T3

A Lay of the Land
PAM BEYETTE
Mosaic Tile & Terrazzo Floor Design, 2010 ➔ Entry Vestibules, Exterior

Musical Warning Beacons / Talking Vestibules
JIM GREEN
Sound Art, 2003 ➔ Entry Vestibules, Baggage Claim

B Please Lose My Suitcase Full of Blues
CORK MARCHESCHI
Neon Sculpture, 1994 ➔ Baggage Claim

C Rainbow's End
DAVID GRIGGS & SCOTT PARSONS
Terrazzo Floor Design, 2016 ➔ Departures Level

D SkyWaves
LAURIE LUNDQUIST
Bridge Design, 2017 ➔ Pedestrian Bridges to Palm Garage

TERMINAL FOUR T4

A Lay of the Land
PAM BEYETTE
Mosaic Tile & Terrazzo Floor Design, 2010 ➔ Entry Vestibules, Exterior

D SkyWaves
LAURIE LUNDQUIST
Bridge Design, 2017 ➔ Pedestrian Bridge to Palm Garage

E Florida Current
KEITH SONNIER
Neon and Metal Sculpture, 2001 ➔ Baggage Claim

Musical Warning Beacons / Talking Vestibules
JIM GREEN
Sound Art, 2003 ➔ Entry Vestibules, Baggage Claim

F The Importance of Being a Bubble
WILLIAM CRUTCHFIELD
Painted Wall Relief, 1989 ➔ Ticketing

G The Seasons
NORMAN LALIBERTE
Tapestry, 1990 ➔ Ticketing

H Atlantic Swell
BRAD GOLDBERG
Terrazzo Floor Design, 2019 ➔ Departures Level

I Mosaic
CAMERON MCNALL / ELECTROLAND
LED Installation, 2020 ➔ Departures Level & Sterile Corridor

GREENBELT

J Fort Lauderdale Airport Sculpture
DAVID LEE BROWN
Stainless Steel Sculpture, 1989 ➔ Entrance to Greenbelt Park

TERMINALS 3/4 CONNECTOR C

K Gateways
ROBERT HUFF
Acrylic, Pencil and Oil Painting, 1991

Conservation Area #2-I
CLYDE BUTCHER
Black/White Photography, 2005

North Fork New River
CLYDE BUTCHER
Black/White Photography, 2005

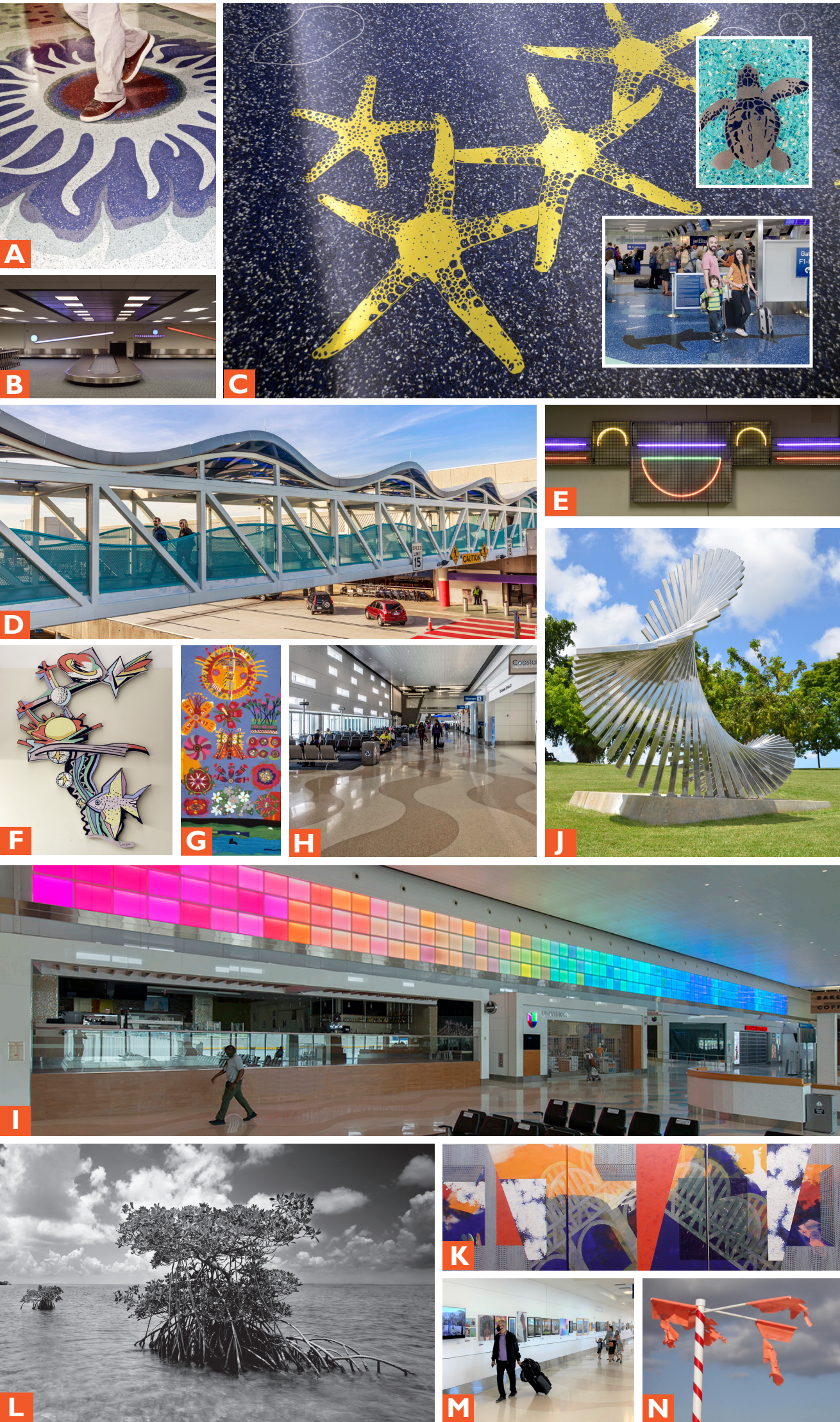
L Shell Key 2
CLYDE BUTCHER
Black/White Photography, 2005

M I Bet You Didn't Know
Employee Art Exhibition

Airfield Studies: Horizon, Material
DAWN ROE
HD Video Kiosk, 2015

N Airfield Studies: Movement I, Movement II
DAWN ROE
HD Video Kiosk, 2015

H Atlantic Swell
BRAD GOLDBERG
Terrazzo Floor Design, 2020



January 2022
Broward County Cultural Division Public Art and Design Program.
1000 copies of this public document were promulgated at a cost of \$650.00 or \$0.6500 per copy, to promote the
An equal opportunity employer and provider of services.

@BrowardArts
954-357-7457
Broward.org/Arts
Broward County Cultural Division
Broward.org/Arts/PublicArt.
For more information about public art at the Airport and throughout Broward County, visit

Broward County Aviation Department.
Art & Design Program, in partnership with the
Broward County Cultural Division through its Public
FLL's public art collection is managed by the
public art of any Broward County agency.
artworks, FLL has the highest concentration of
Broward County taxpayer dollars. With over 60
funded by service and passenger fees, not by
its operation, capital projects, and public art are
FLL operates as an enterprise fund, meaning that

