



# MAP Broward

Mobility Advancement Program

Brought to you by the  
Penny For Transportation

**Pompano Park Place (Race Track Road / SW 3<sup>rd</sup> Street /Sgt. Chris Reyka Place)**

From East of Powerline Road to West of Cypress Road

(Surtax Funded)

Pompano Park Place Improvement Project



*Broward County Commission*  
**HIGHWAY CONSTRUCTION AND ENGINEERING DIVISION**

NAN H. RICH      MARK D. BOGEN      MICHAEL UDINE      STEVE GELLER      BEAM FURR  
TIM RYAN      JARED E. MOSKOWITZ      TORY ALSTON      LAMAR P. FISHER

***Sidewalk and Bike Lane Improvements from Powerline Road to Cypress Road***



## PUBLIC INFORMATION MEETING NOTICE

Pompano Park Place (Race Track Road/SW 3<sup>rd</sup> Street/Sgt. Chris Reyka Place) Bike Lane and Sidewalk Improvements from Powerline Road to S. Cypress Road (Surtax Funded), Broward County, Florida

### **PUBLIC MEETING INFORMATION**

Date: Tuesday, August 2, 2022

Time: 6:00 PM - 7:30 PM

Location: Charlotte Burrie Center, 2669 N.

Federal Highway, Pompano Beach, Florida 33064

## Meeting Notice

This PUBLIC INFORMATION MEETING is being held to present the project status and provide opportunities for public input. County representatives will be available to answer questions during the meeting. The public is encouraged to attend this meeting to review the proposed transportation improvements.



This notice features project information brought to you by the Penny for Transportation Mobility Advancement Program, known as MAP Broward. The Broward County Highway Construction and Engineering Division will conduct a **PUBLIC INFORMATION MEETING** for the proposed bike lane and sidewalk improvements to Pompano Park Place (Race Track Road), located in the City of Pompano Beach.

The primary purpose of this project is to add bike lanes and sidewalk. The construction activities will include widening, milling, resurfacing, adding signage, pavement markings, and drainage improvements.

This **PUBLIC INFORMATION MEETING** is being held to present the project status and provide opportunities for public input. County representatives will be available to answer questions during the meeting. The public is encouraged to attend this meeting to review the proposed transportation improvements.

Public participation is solicited without regard to race, color, national origin, age, sex, religion, disability, or family status. Persons who require special accommodations under the Americans with Disabilities Act or persons who require translation services (free of charge) should contact the Broward County Highway Construction and Engineering Division at 954-577-4555 or [hcedinfo@broward.org](mailto:hcedinfo@broward.org) at least seven days prior to this meeting.

For more information on public meetings for Broward County Highway Construction and Engineering Division capital projects: <https://www.broward.org/BCEngineering/Pages/CapitalProjectsPublicInvolvement.aspx>

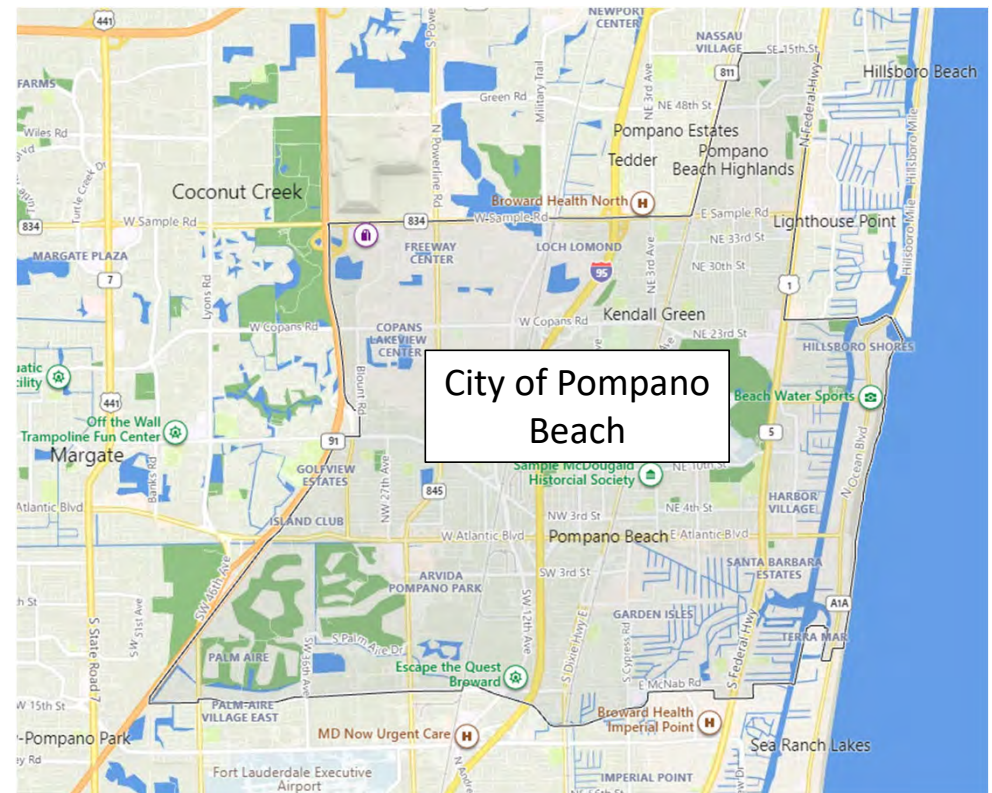
# Project Information



- **Broward County Project Number:** 106047
- **Project Name:** Pompano Park Place / SW 3<sup>rd</sup> Street/ Race Track Road
- **Project Limits:** From East of Powerline Rd To West of Cypress Road
- **Broward County Project Manager:** Laila Kitchen, P.E.
- **KEITH Project Manager :** Lori Treviranus, PE

# Project Description

- This is a Multimodal Improvement Project
- Located within the City of Pompano Beach in Broward County



# Project Improvements/Enhancements

- Speed control/safety



*Existing  
Posted Speed*



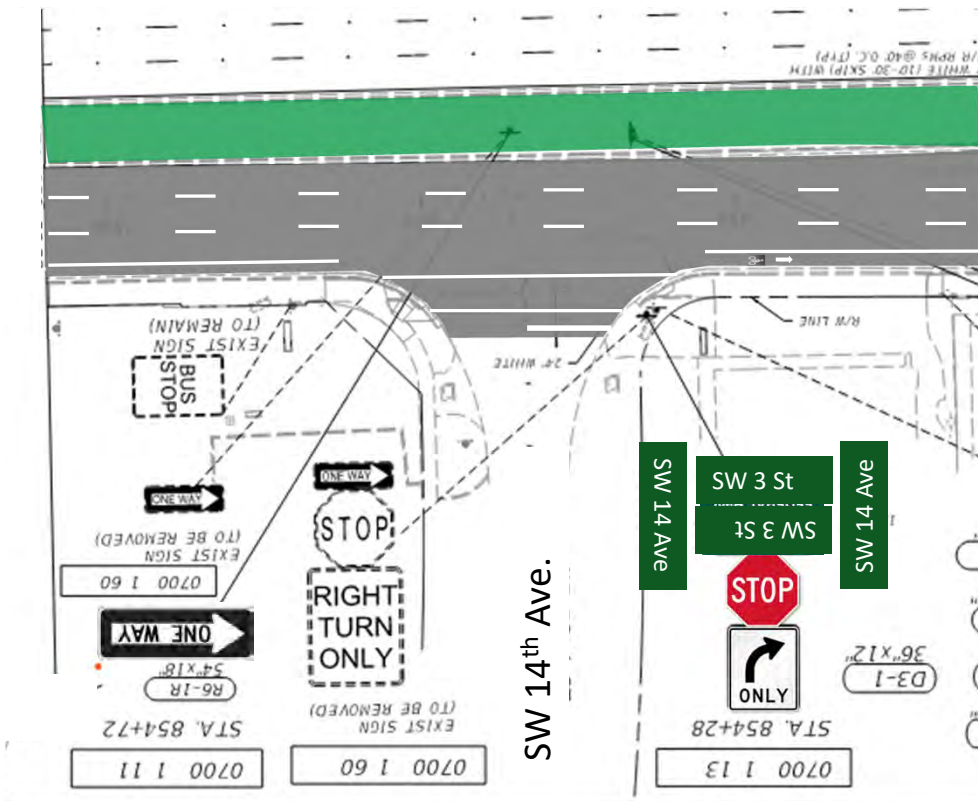
*Proposed  
Posted Speed*

- Replace and upgrade existing curb ramps to comply with Americans with Disabilities Act (ADA) standards.



# Project Improvements/Enhancements

- Install new signing and pavement markings.

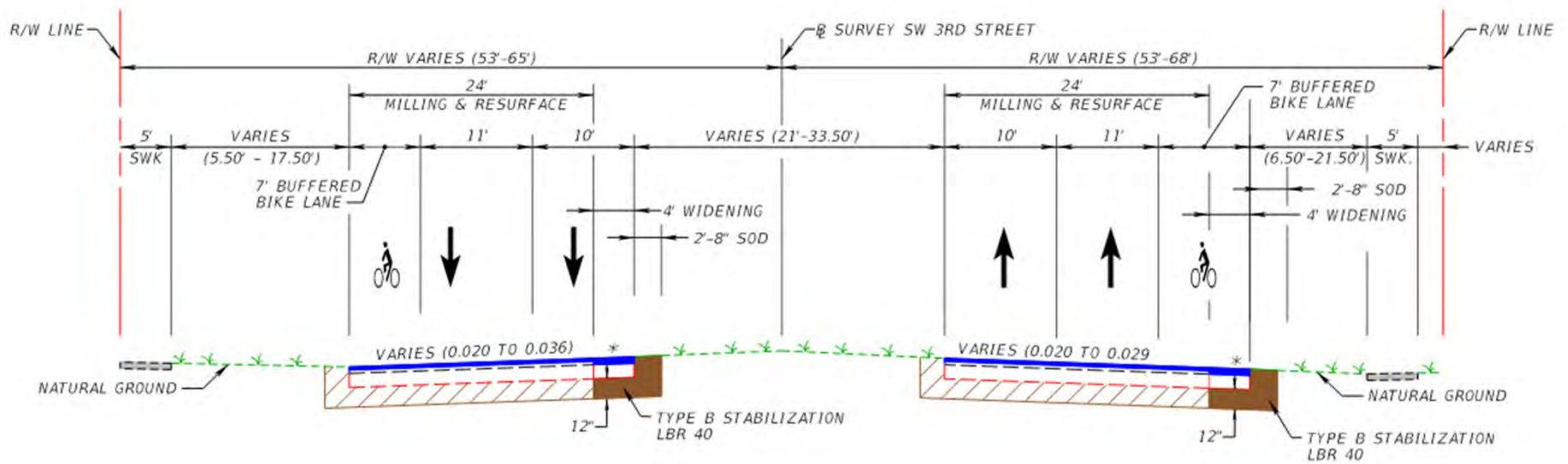


- Adding bike lanes



# East of Powerline Road to South Florida Rail Corridor

# Typical Section 1



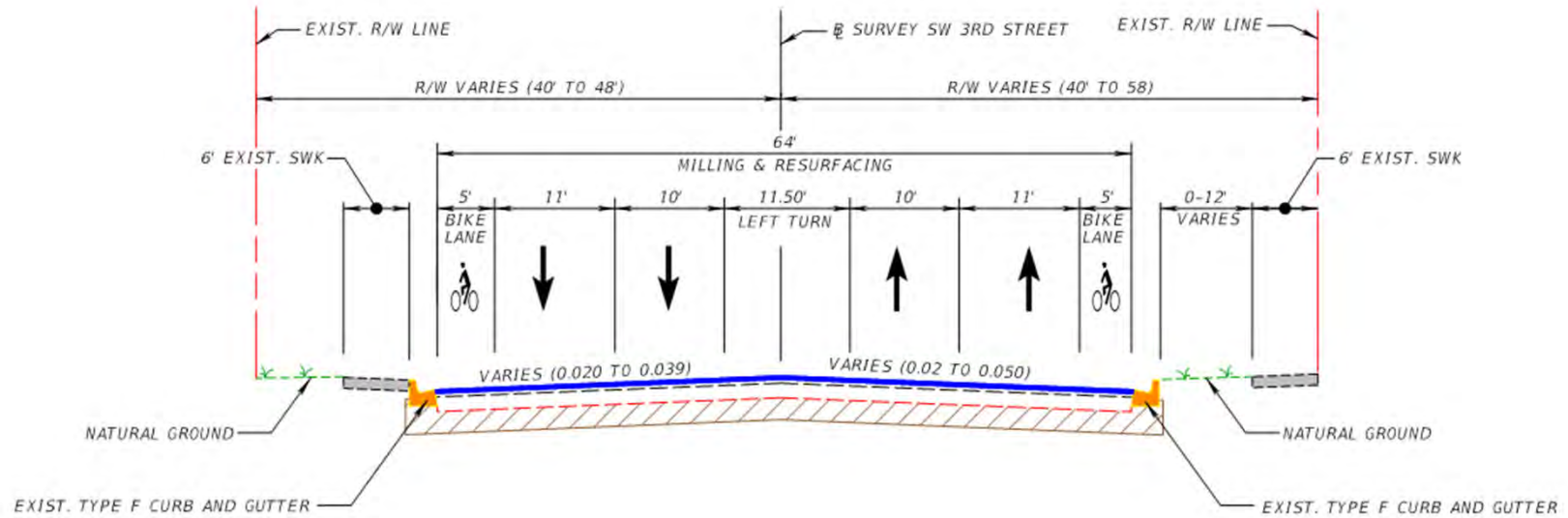
TYPICAL SECTION  
 SW 3RD STREET / RACE TRACK RD  
 STA. 11+38.37 TO STA. 42+90.23  
 STA. 43+21.35 TO STA. 44+81.86



From East of Powerline Road to South Florida Rail Corridor

Section 1  
Plan View

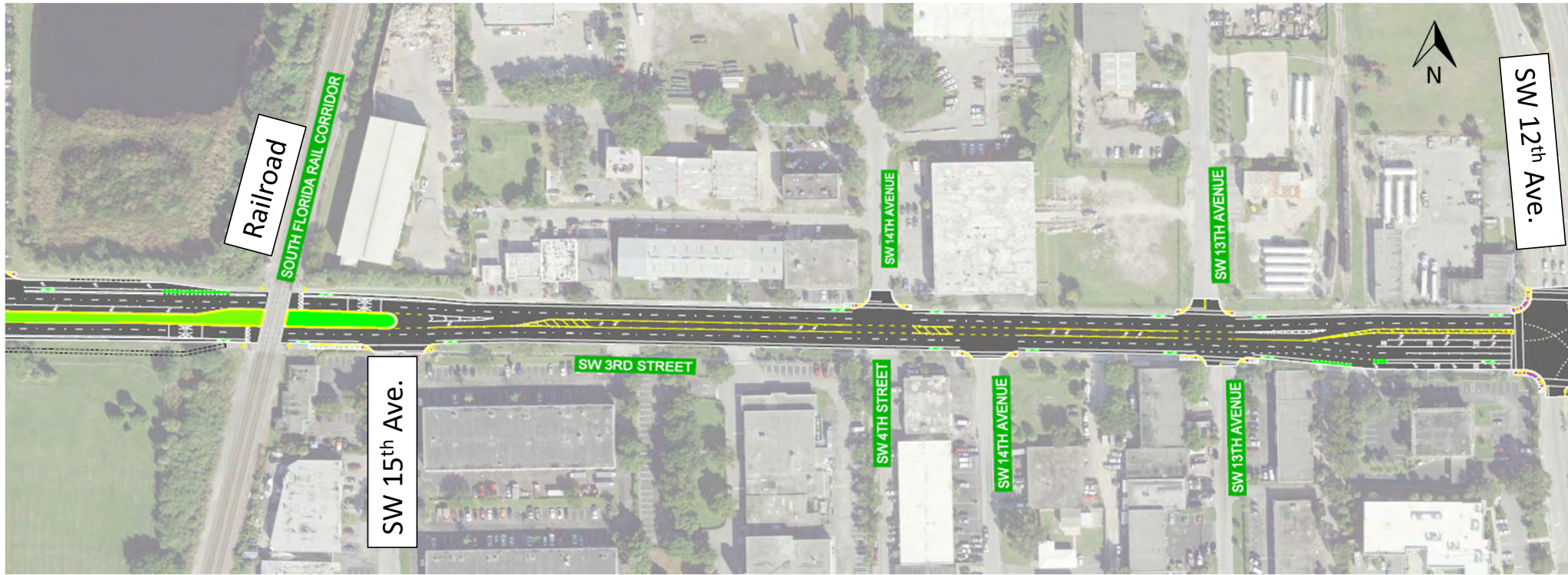




TYPICAL SECTION  
POMPANO PARK PLACE / RACE TRACK RD  
STA. 44+81.86 TO STA. 61+80.00

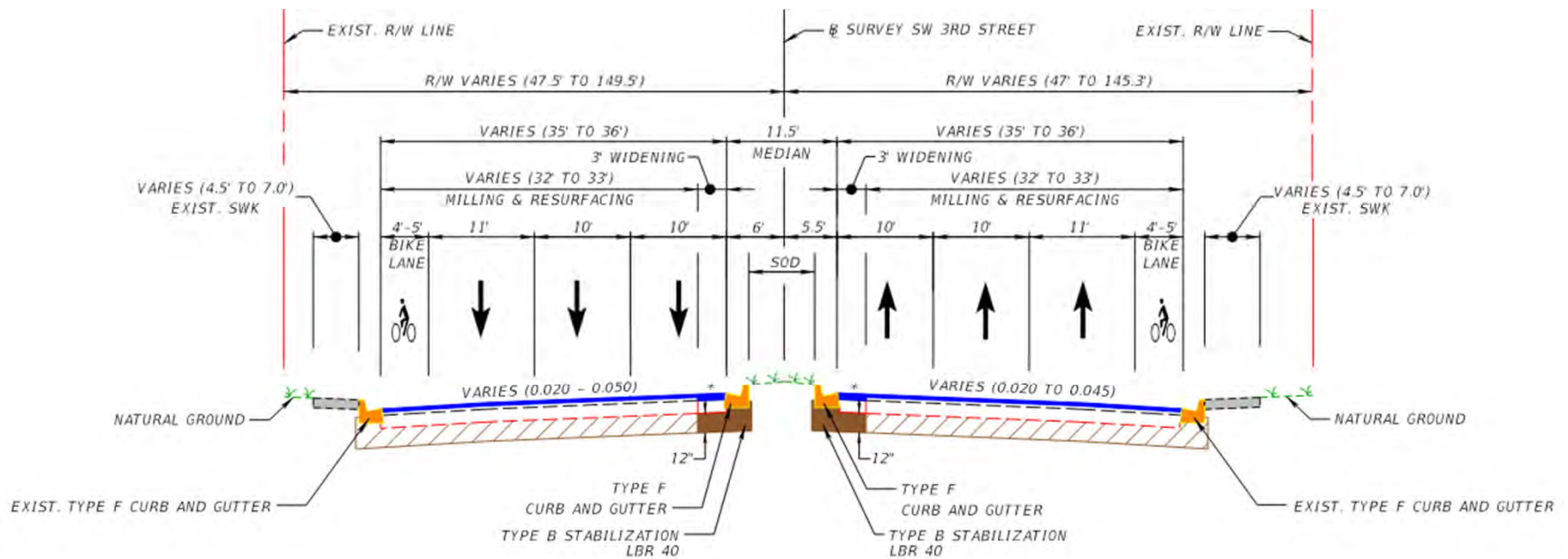
From South Florida Rail Corridor to SW 12<sup>th</sup> Avenue

Section 2  
Plan View



From SW 12<sup>th</sup> Avenue to Eastbound South Dixie Highway

Typical Section 3



TYPICAL SECTION  
POMPANO PARK PLACE / RACE TRACK RD  
STA. 61+80.00 TO STA. 69+09.67  
STA. 72+09.48 TO STA. 96+00.00

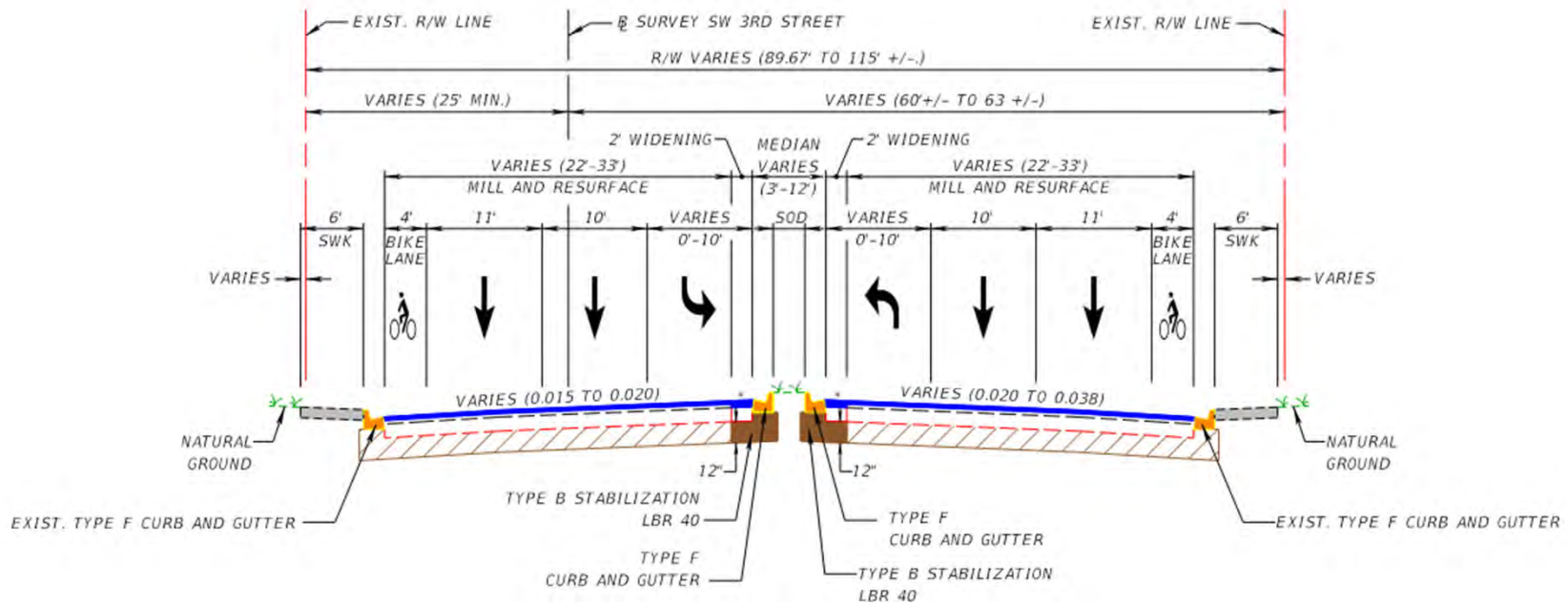
From SW 12<sup>th</sup> Avenue to Eastbound South Dixie Highway

Section 3  
Plan View



# From Eastbound South Dixie Highway to Florida East Coast Railway

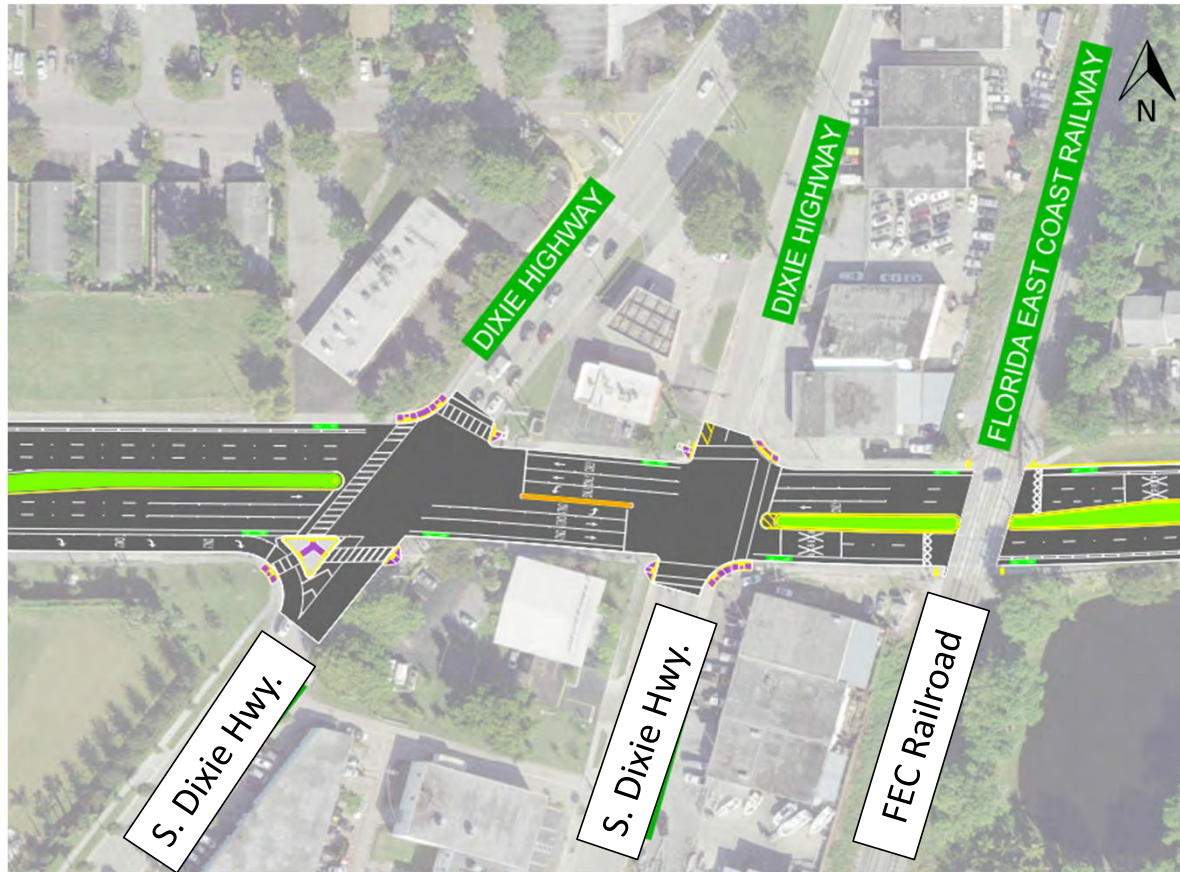
# Typical Section 4



TYPICAL SECTION  
 POMPANO PARK PLACE / RACE TRACK RD  
 STA. 96+00.00 TO STA. 102+00.00

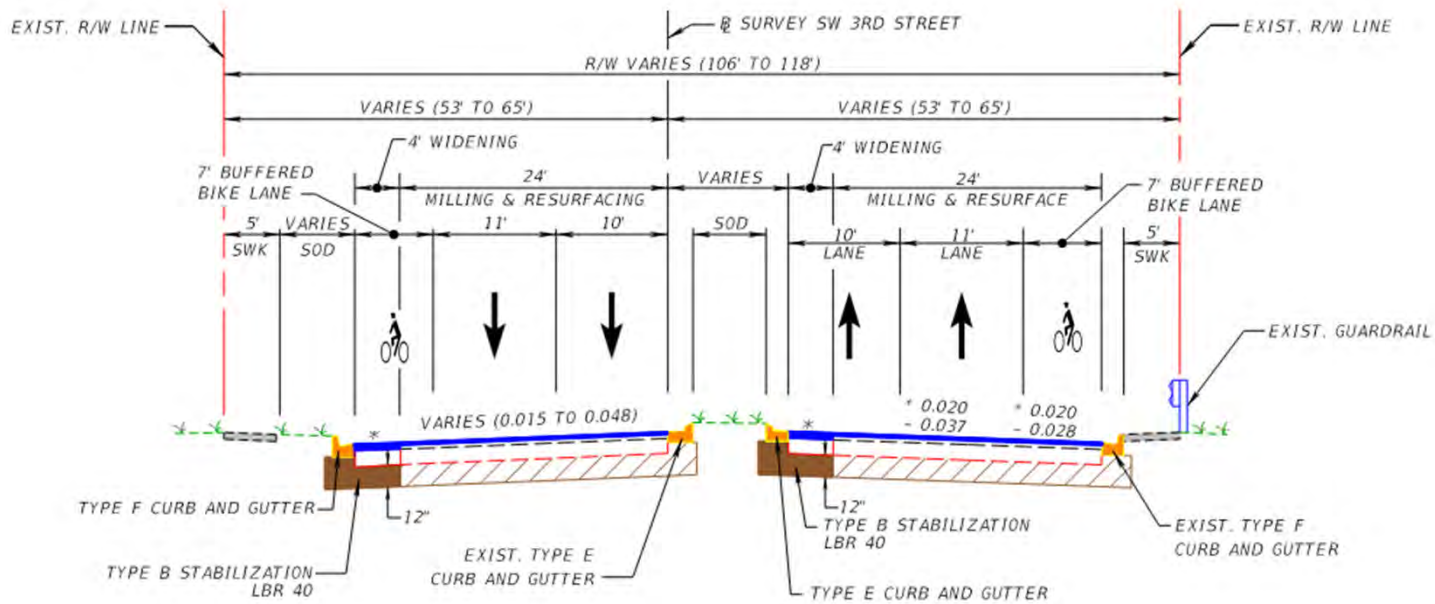
From Eastbound South Dixie Highway to Florida East Coast Railway

Section 4  
Plan View



# From Florida East Coast Railway to Lakebridge Townhome Development Roadway

## Typical Section 5

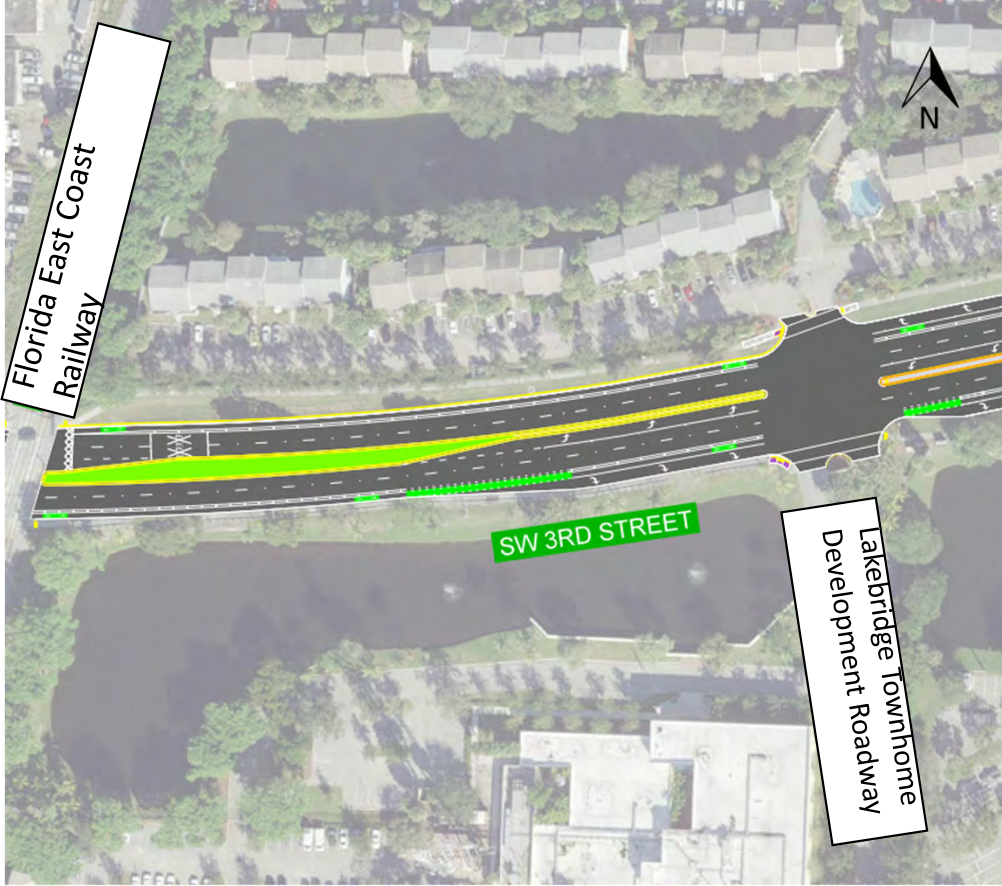


TYPICAL SECTION  
 POMPANO PARK PLACE / RACE TRACK RD  
 STA. 102+00.00 TO STA. 107+00.00



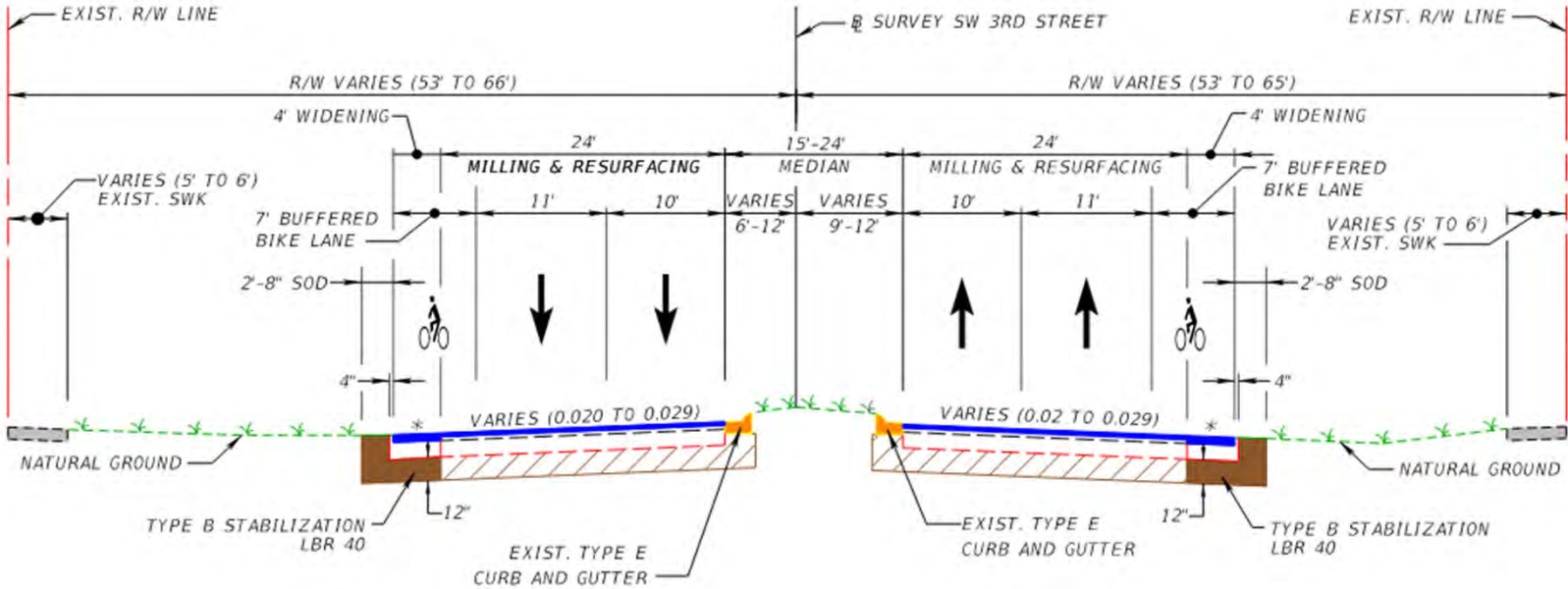
From Florida East Coast Railway to Lakebridge Townhome  
Development Roadway

Section 5  
Plan View



From Lakebridge Townhome Development Roadway to West of South Cypress Road

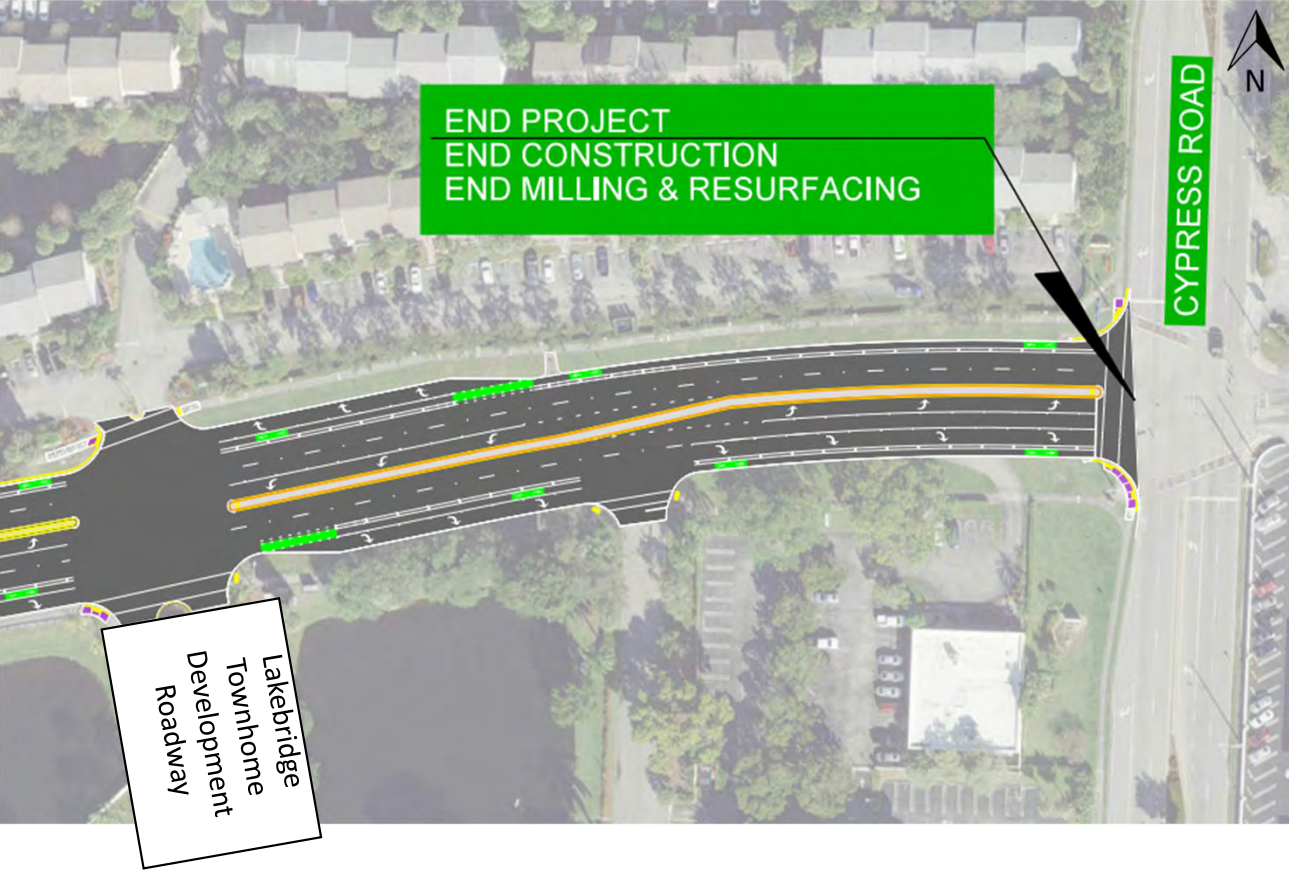
Typical Section 6

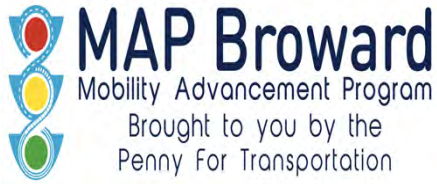


TYPICAL SECTION  
 POMPANO PARK PLACE / RACE TRACK RD  
 STA. 107+00.00 TO STA. 113+66.00

From Lakebridge Townhome Development Roadway  
To West of South Cypress Road

Section 6  
Plan View





# THANK YOU

*BROWARD COUNTY COMMISSION  
HIGHWAY CONSTRUCTION AND ENGINEERING DIVISION*

---

*NAN H. RICH    MARK D BOGEN    MICHAEL UDINE    STEVE GELLER    BEAM FURR    TIM RYAN  
JARED E. MOSKOWITZ    TORY ALSTON    LAMAR P. FISHER*

*BROWARD COUNTY PROJECT NO. 106047*

*BIKE LANE & SIDEWALK IMPROVEMENTS IN POMPANO PARK PLACE /SW 3rd STREET /RACE TRACK RD*

Presented By :  
Laila Kitchen, P.E. Engineering Unit Supervisor  
Broward County Highway Construction and Engineering Division

For more information contact:  
Dickey Consulting Services  
[info@dickeyinc.com](mailto:info@dickeyinc.com)  
T: 954.467.6822