



Board of County Commissioners

**Martin David Kiar
Vice Mayor, District 1**

**Mark D. Bogen
Commissioner, District 2**

**Stacy Ritter
Commissioner, District 3**

**Chip LaMarca
Commissioner, District 4**

**Lois Wexler
Commissioner, District 5**

**Beam Furr
Commissioner, District 6**

**Tim Ryan
Mayor, District 7**

**Barbara Sharief
Commissioner, District 8**

**Dale V.C. Holness
Commissioner, District 9**

**Bertha Henry
County Administrator**

**Kayla Olsen
Director, Office of Management and Budget**

FISCAL YEAR 2016 ADOPTED OPERATING BUDGET

The Broward County Budget provides Broward County residents and the Board of County Commissioners with a funding plan for fiscal year 2016. Three documents summarize the spending policies that were used to develop the budget; the financial and budgetary details that make up the budget; and most importantly, descriptions of the programs and capital projects that are provided with the public's funds.

The **Operating Budget** contains the summaries of the entire budget in its first section. These summaries include millage information, revenue and appropriation summaries and general financial information. Throughout the document there are references to the capital program and debt service budget. Please see the capital program document to obtain more information on the referenced items.

The **Operating Budget** document also provides program objectives, service level data by program, and descriptions of all Broward County agencies. It is organized by:

- ❖ Department (i.e. Transportation)
- ❖ Division (i.e. Transit)
- ❖ Section/Program (i.e. Transportation Operations)

Also included in the **Operating Budget** is a concise explanation of the increases/decreases in each Division's budget from fiscal year 2015 to fiscal year 2016.

Two other budget documents provide additional information:

- ❖ The **Fiscal Year 2016 Budget-in-Brief** provides an overview of the entire County Budget. It includes the County Administrator's Budget Message which presents the budgetary and financial policies upon which the budget was developed.
- ❖ The **Fiscal Year 2016 - 2020 Capital Program** provides detailed information on all new capital projects programmed for fiscal years 2016 through 2020. It also includes the County's Debt Service Budget.

If you have any questions, or desire additional information, please call the Office of Management and Budget at 954-357-6345, or visit us at www.broward.org/budget.

Office of Management and Budget

Kayla Olsen, Director

Marci Gelman, Assistant Director

STAFF

Anais Anderson

Kristen Bishop

Charvella Campbell

William Hodge Hermann

Laurette Jean

Samuel Ling

J. Michael Munger

Maureen Shields

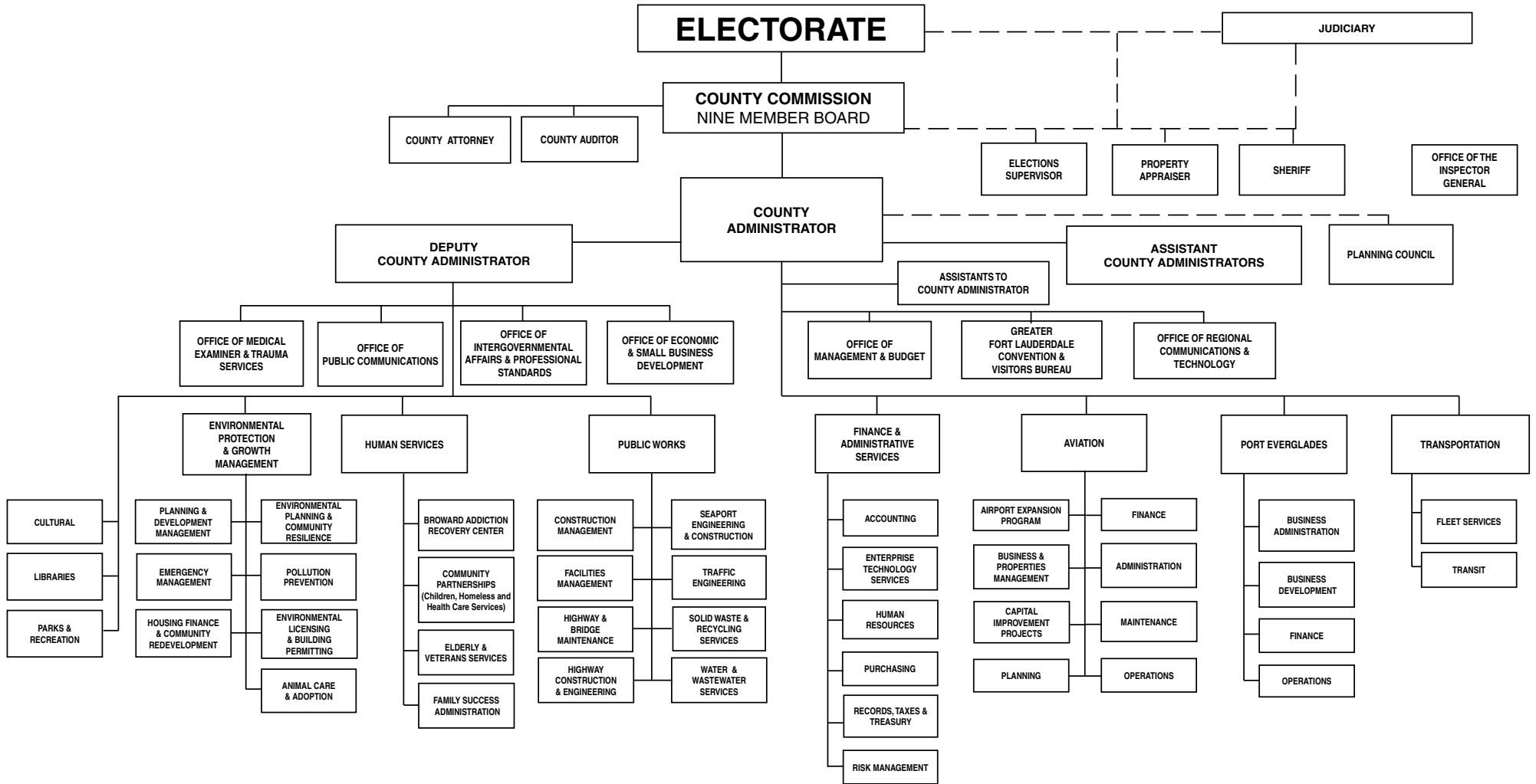
Elizabeth Sierra

Jennifer Steelman

Vladislav Steere

SunJin Zanker

GOVERNMENTAL STRUCTURE OF BROWARD COUNTY



Summaries

Millage Comparison 1
 Consolidated Fund Summary 2
 Operating Budget Appropriation Summary 5
 Appropriations by Department 6
 General Fund Appropriation Summary 7
 General Fund Revenue Summary 8
 Financial Information 9

County Commission

County Commission 1-2
 County Auditor 1-4
 County Attorney 1-6

Elected Officials

Clerk of Courts 2-2
 Legislative Delegation 2-3
 Property Appraiser 2-5
 Supervisor of Elections 2-8
 BSO - Office of the Sheriff, Community Services,
 Administration, and Professional Standards 2-11
 BSO - Regional Law Enforcement and Investigations 2-14
 BSO - Law Enforcement Contracts 2-18
 BSO - Detention and Community Programs 2-21
 BSO - Regional Fire Rescue Services 2-25
 BSO - Fire Rescue Contracts 2-29
 BSO - Law Enforcement Trust 2-33
 BSO - Consolidated Dispatch Contract 2-35

Judicial

Circuit/County Court 3-2
 Legal Aid 3-5
 Public Defender 3-6
 State Attorney 3-7
 Court Cost Fund 3-8
 Judicial Technology Fee Fund 3-10
 Teen Court Fee Fund 3-12
 Law Library 3-13

County Administration

County Administration 4-2
 Office of Regional Communications and Technology 4-4

E-911 Fund 4-10
 Office of Economic and Small Business Development 4-13
 Economic and Small Business Development/Assigned
 Costs 4-20
 Economic & Sm Business Development/Local Business
 Taxes Fund 4-22
 Office of Management and Budget 4-24
 Office of Intergovernmental Affairs & Professional
 Standards 4-26
 Office of Public Communications 4-31
 Office of Public Communications/Print Shop 4-34

Aviation

Aviation Operating 5-2

Libraries, Parks and Cultural

Broward Cultural Council Fund 6-2
 Libraries 6-10
 Parks & Recreation 6-15
 Broward Municipal Services District Parks 6-21
 Parks Target Range 6-24
 Parks Enhanced Marine Law Enforcement 6-27
 Everglades Holiday Park 6-29
 Parks Concession Fund 6-32

Environmental Protection & Growth Management

Administration 7-3
 Animal Care and Adoption 7-5
 Animal Care Trust Fund 7-9
 Emergency Management 7-11
 Environmental Licensing and Building Permitting 7-14
 Environmental Licensing and Building Permitting / Special
 Purpose Fund 7-22
 Licensing, Elevator and Regulatory Fund 7-27
 Manatee Protection Fund 7-35
 Env. Licensing and Building Permitting Contracts 7-37
 Housing Finance and Community Redevelopment 7-39
 Housing Finance Fund 7-41
 Community Development Grant Fund 7-42
 Environmental Planning and Community Resilience 7-44
 Environmental Planning and Community Resilience
 Contracts 7-50
 Pollution Recovery Trust Fund 7-52

Impact Fee Surcharge Trust 7-54
 Planning and Development Management 7-55
 Code & Zoning Enforcement/Municipal Service District 7-60
 Pollution Prevention 7-63
 Air Pollution Trust. 7-67
 Pollution Prevention Contracts. 7-69

Finance & Administrative Services

Administration 8-2
 Value Adjustment Board 8-4
 Accounting 8-6
 Enterprise Technology Services. 8-8
 Enterprise Technology Services/Assigned Costs. 8-12
 Human Resources/General Fund 8-13
 Human Resources - Employee Benefits Fund. 8-16
 Purchasing 8-21
 Records, Taxes and Treasury 8-24
 Public Records Modernization Trust Fund 8-31
 Risk Management/Operating Fund 8-33
 Risk Management / Owner Controlled Ins. Program 8-40
 BSO Self Insurance 8-42
 BSO Workers' Compensation 8-43
 Assigned Department Costs 8-44

Human Services

Administration - Human Services. 9-2
 Broward Addiction Recovery 9-9
 Broward Addiction Recovery Grants 9-16
 Community Partnerships - Homeless Services Fund 9-17
 Community Partnerships 9-20
 Community Partnerships Grants 9-27
 Community Partnerships - Pay Telephone Trust Fund 9-29
 Driver Education Safety Trust 9-31
 Elderly & Veterans Services. 9-33
 Elderly & Veterans Services Grants. 9-38
 Family Success Administration 9-39
 Family Success Administration Grants 9-42

Port Everglades

Port Everglades Operating Fund 10-2

Public Works

Administration 11-3
 Facilities Management 11-7
 Assigned Department Cost/General Fund 11-17
 Highway Construction & Engineering 11-18
 Highway Construction /Parks Planning & Engineering 11-24
 Highway Bridge Maintenance 11-26
 Highway Bridge Maintenance/Mosquito Control-Local 11-29
 Highway Bridge Maintenance/Mosquito Control-State 11-31
 Traffic Engineering 11-32
 Broward Municipal Services District/School Guards 11-39
 County Transportation Trust. 11-41
 Broward Municipal Services District Waste Collection 11-43
 Solid Waste and Recycling Services/Res Recovery 11-47
 Solid Waste and Recycling Services/Solid Waste 11-48
 Water & Wastewater Services 11-58

Transportation

Transit 12-2
 Fleet Services 12-13

Boards & Agencies

Board of Rules & Appeals 13-2
 Convention Center 13-5
 Convention & Visitors Bureau 13-9
 Medical Examiner & Trauma Services. 13-12
 Planning Council 13-18
 Office of Inspector General 13-20

Non-Departmental

Three Cent Tourist Tax Revenue Fund 14-2
 Two Cent Tourist Tax Revenue Fund. 14-3
 Broward Municipal Services District. 14-4
 Non-Departmental Costs 14-7
 Street Lighting District 14-12
 Cocomar Water Control District 14-13
 Water Control District Two 14-14
 Water Control District Three. 14-15
 Water Control District Four. 14-16