
BROWARD AND COMPACT RESILIENCE UPDATE

**Broward Climate Change Task Force
August 20, 2021**

**Environmental Protection
and Growth Management
Department**



OVERVIEW

- Resilience Budget Workshop
- C&SF Flood Resiliency Study
- Resilience Roundtable
- Compact 13th Annual Summit



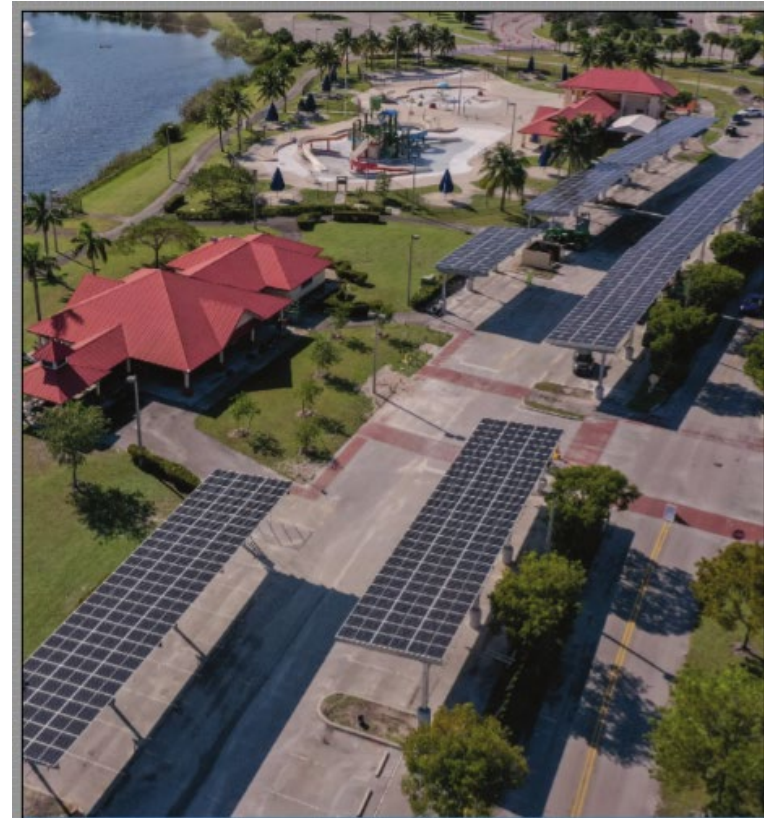


RESILIENCE BUDGET WORKSHOP



BROWARD RESILIENCE BUDGET WORKSHOP – MAY 11, 2021

- Challenges and policy framework
- Resiliency planning
- Shoreline resilience/green infrastructure
- County-wide coordination
- Mitigation action
- Internal initiatives
- Future direction



STAFF RECOMMENDATIONS

- County Agencies with physical assets (WWS, Transportation, Streets and Highways, Parks, Airport, Seaport, and general government) undertake comprehensive assessments of their assets vulnerable to sea level rise and future storm surges, with State funding available.
- Assess and prioritize the most urgent projects identified in the comprehensive assessments.
- Enhance climate resilience strategies for mitigation and adaptation investments as part of the annual capital budget development process, including Surtax projects.

STAFF RECOMMENDATIONS

- Develop and present to the BOCC a 2030 Net Zero Plan addressing the entirety of county operations.
- Submit a 2nd round of rooftop and solar canopy photovoltaic projects for installation at existing county facilities.
- Budget for the installation of rooftop photovoltaic systems as part of all County facility reroofing projects, where structural considerations, energy use/production are deemed compatible.

SUBSEQUENTLY

- Advancement of 3 additional solar projects (0.4 MW) for board consideration
- Initial steps in net zero planning effort
- Funds allocated for county asset vulnerability assessment
- Consideration of heat as part of county-wide vulnerability assessment
- Coordination underway with Surtax Team



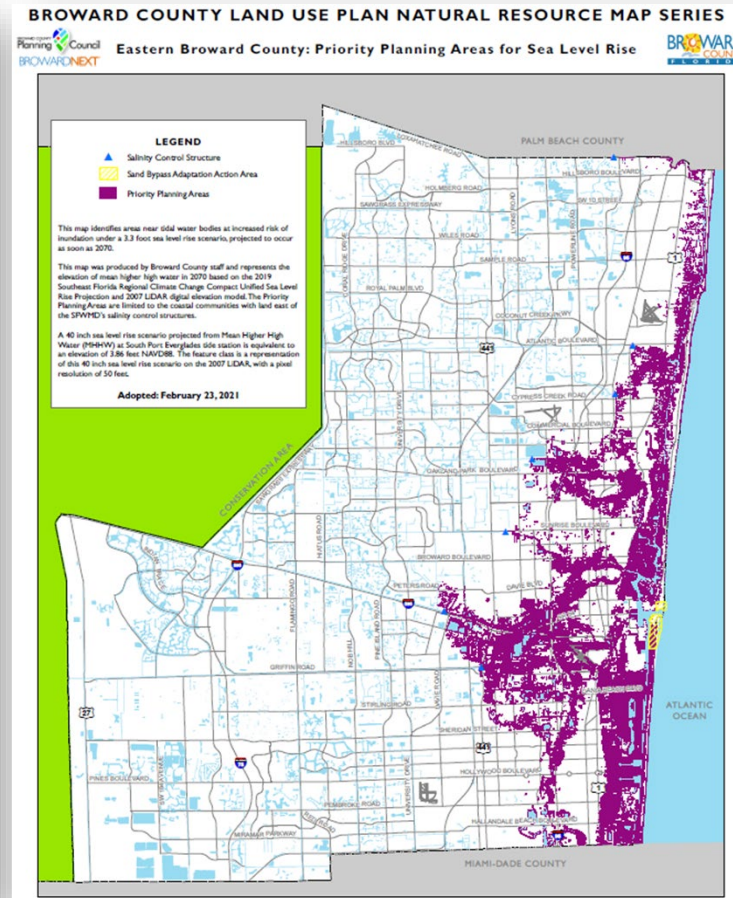
C & SF FLOOD RESILIENCE STUDY



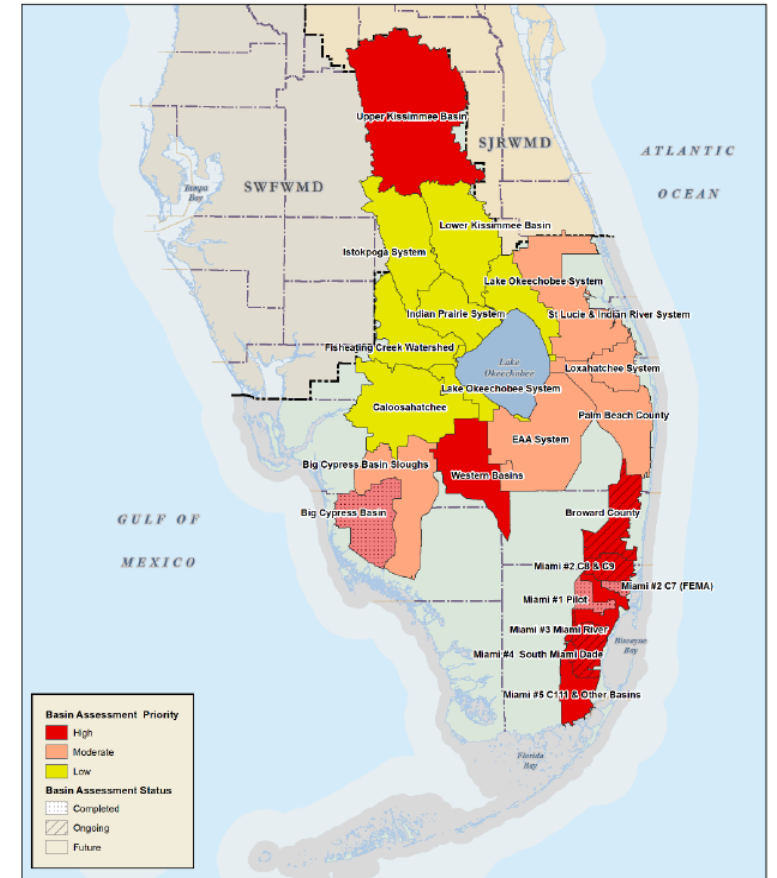
STRUCTURES PROVIDE WATER SUPPLY AND FLOOD PROTECTION



Broward County
Saltwater Intrusion Line



Broward County
3' SLR Scenario



SFWMD FLPOS Study

Exciting Progress to Report... Finally!

- May 28 Announcement - New Start funded in FY'22 Presidents Budget (\$500k Fed) – Investigations, Flood Risk Management (FRM), 3 Years and \$3 Mil effort...Target WRDA 2026
- Scope: Focus on the project features which can reduce the most immediate risk to changing conditions, in terms of flood vulnerabilities resulting from climate change, sea level rise, and population growth
- Timeline:
 - ▶ Target WRDA 2026 – 30% Design report with recommendations
 - ▶ Preliminary Engineering and Design - Commence 2027 (2-5 years) 2028-2033*
 - ▶ Receive “New Start Construction”*
 - ▶ Ground-Breaking 2029 (earliest and aggressive)*-2034



BROWARD RESILIENCE ROUNDTABLE



ANNOUNCED – FRIDAY OCTOBER 1, 2021



- County
- Municipalities
- Business Leadership
- Tribal Leadership

- Commissioners
- Administrators
- Managers
- CEO's
- Staff



2019 Resilience Roundtable

DRAFT AGENDA

- State of the County
 - Advancements
 - Dashboard
 - Opportunities
- C & SF Update
- IPCC Report and Call to Action
- Economic resilience
- Tribal resilience
- Municipal resilience

Broward County Resilience Dashboard
Broward County continues to build resilience at a number of scales, internally for government operations, and countywide for the community.

[Broward's Approach](#) [Climate Action Plans](#) [Solar and Electric](#) [GHG Emissions Inventory](#) [Resilience](#)

Broward County Resilience Projects
Powered by Broward County GIS

Showing 1

Municipal Adaptation Projects: Deerfield Beach

Project	Tidal Gauge Installation
Address	1633 Riverview Rd
City	Deerfield Beach
Zip Code	33441

The screenshot displays a web-based GIS dashboard. At the top, there are navigation tabs for 'Broward's Approach', 'Climate Action Plans', 'Solar and Electric', 'GHG Emissions Inventory', and 'Resilience'. Below this is a header for 'Broward County Resilience Projects' powered by Broward County GIS. The main content area shows a map of Deerfield Beach with several orange circular markers and blue house icons. A popup window is open over one of the markers, displaying project details: 'Municipal Adaptation Projects: Deerfield Beach', 'Project: Tidal Gauge Installation', 'Address: 1633 Riverview Rd', 'City: Deerfield Beach', and 'Zip Code: 33441'. The Windows taskbar is visible at the bottom of the screen.

13TH ANNUAL COMPACT SUMMIT



REGISTRATION NOW OPEN

REGISTER NOW

EVENT DETAILS

DATE

December 9th - 10th, 2021

LOCATION

Palm Beach County
Convention Center

DON'T MISS OUT!



Register now to take advantage of early-bird pricing.

Join us at the Palm Beach County Convention Center to exchange ideas on expanding the region's ability to respond to climate challenges and build climate resilience.



QUESTIONS?

Dr. Jennifer Jurado

Chief Resilience Officer, Deputy Director

jjurado@broward.org