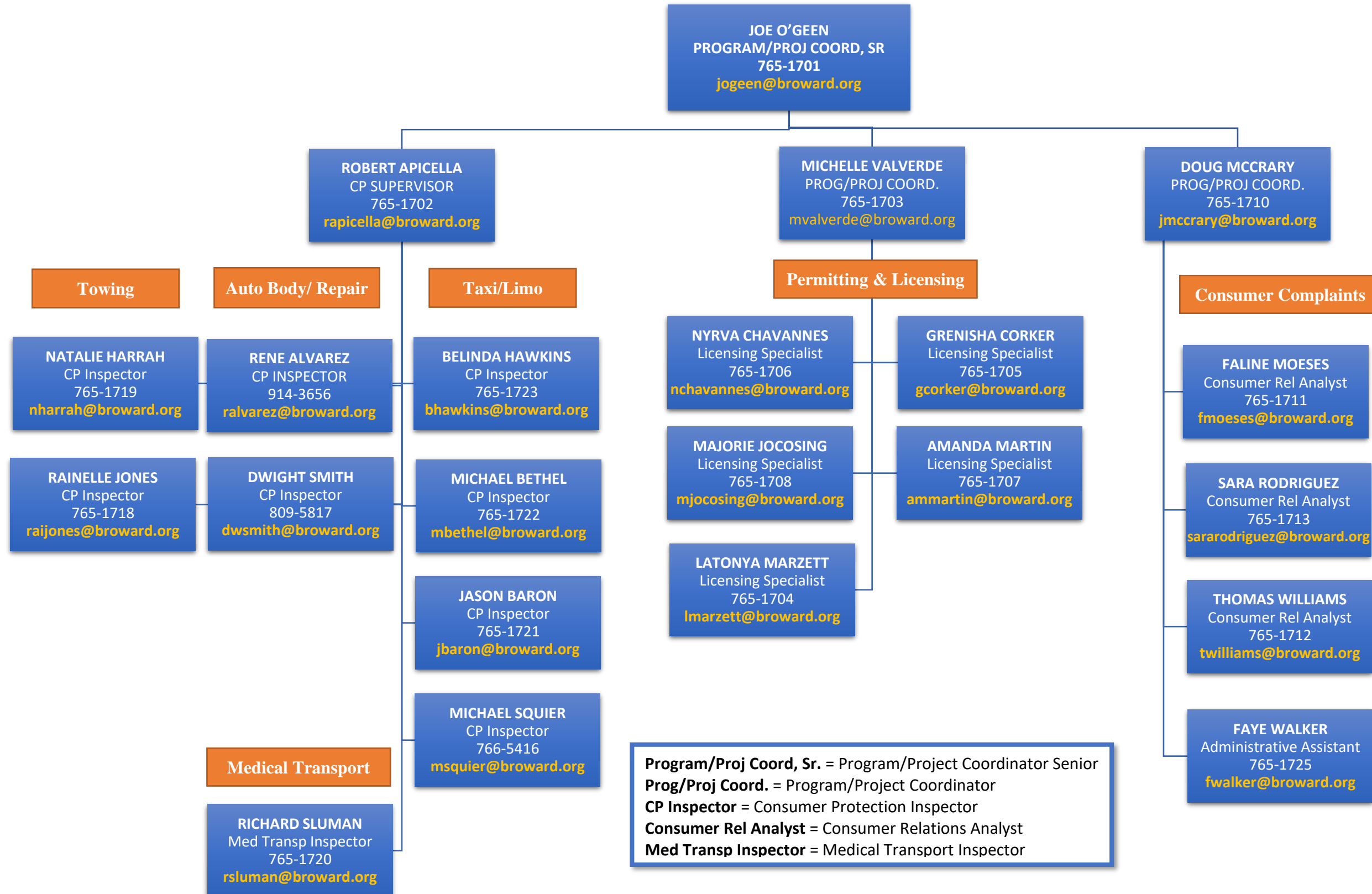


# Consumer Protection (CP)

## Environmental and Consumer Protection Division

Main Line: (954) 765-1700  
Email: [consumer@broward.org](mailto:consumer@broward.org)



**Program/Proj Coord, Sr.** = Program/Project Coordinator Senior  
**Prog/Proj Coord.** = Program/Project Coordinator  
**CP Inspector** = Consumer Protection Inspector  
**Consumer Rel Analyst** = Consumer Relations Analyst  
**Med Transp Inspector** = Medical Transport Inspector