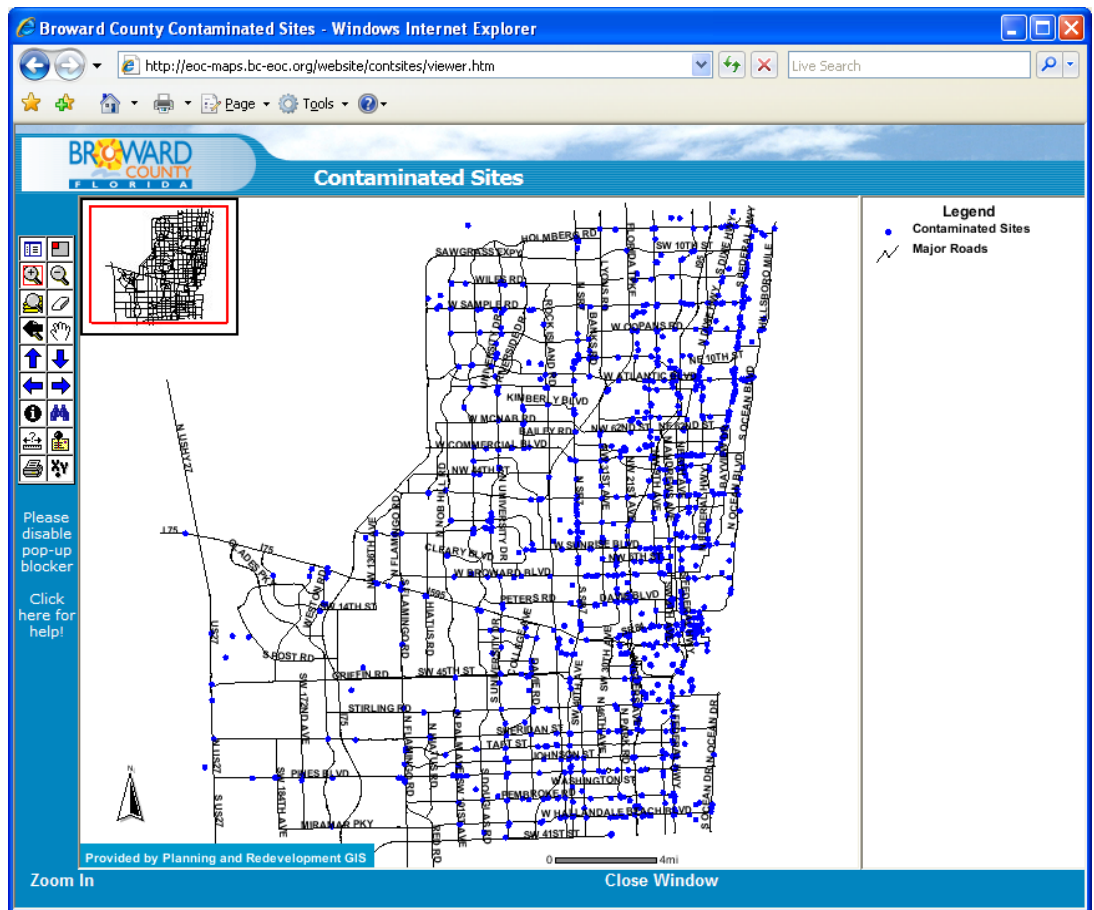




Interactive Map of Contaminated Sites

The Broward County Pollution Prevention, Remediation and Air Quality Division (Division) has developed an [Interactive Map](#) of Contaminated Sites in Broward County. The Map is available at the Division's [Contaminated Sites](#) webpage. This webpage also has a link to the [Inventory Report of Contaminated Locations](#), which is downloadable as an Excel spreadsheet. The Map and the Inventory Report are automatically updated daily.

The Interactive Map is a Geographic Information System (GIS) based map that is linked to information in the County's Contaminated Locations Database. The Map includes several features that allow users to locate contaminated sites in an area and also search for specific contaminated sites by address or name. This article describes some of the most useful features of the Map. Please note that in order to use these features, you may need to disable the pop-up blocker of your internet browser.



See Interactive Map, continued on Page 2

Also in this Issue...

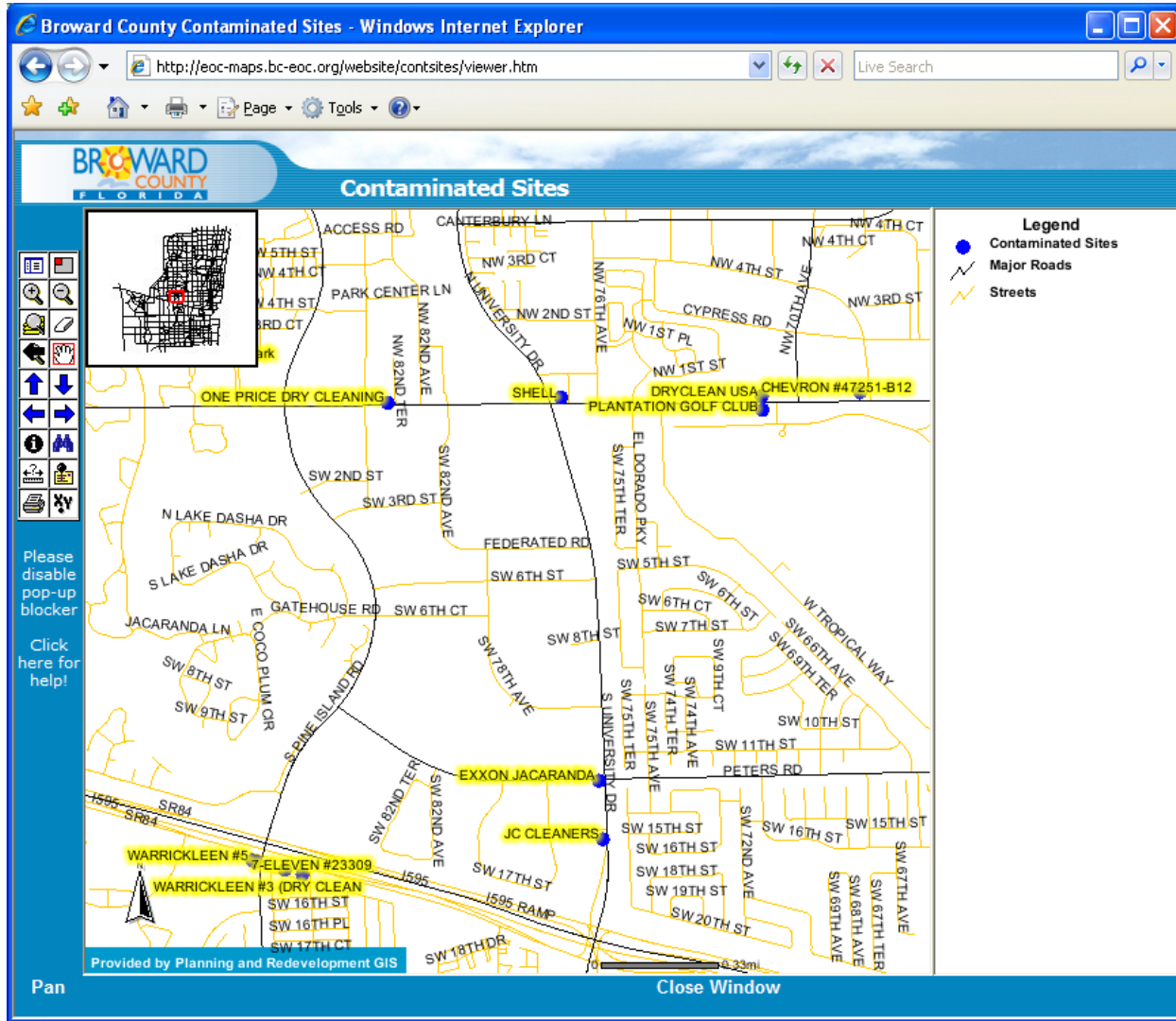


- Revised Groundwater Sampling Log
- Government Center West Location Officially Open for Business
- Feedback Forum

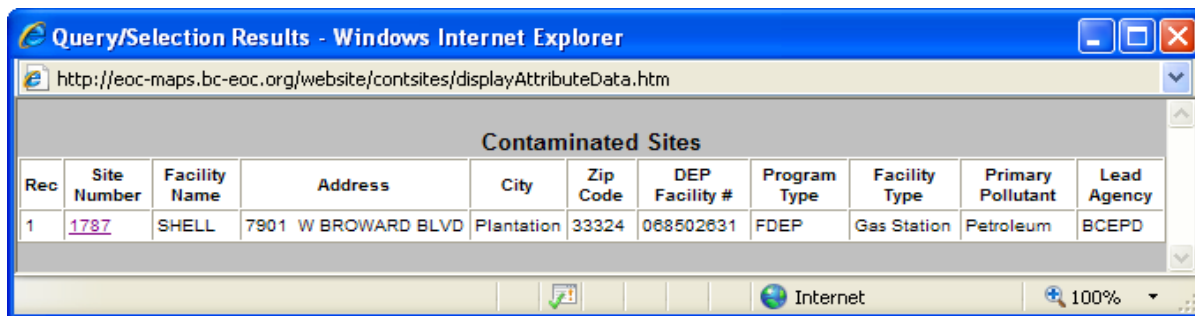
- Page 5
- Page 6
- Page 6

Interactive Map, continued from Page 1

Contaminated sites are represented by the blue dots ● on the map. As you zoom in on the map, more information is shown, including street names and contaminated site names.



To obtain more information about a contaminated site, click on the Identify icon **i** on the left side of the webpage and then click on the blue dot ● representing the site. You must click directly on the center of the blue dot – not the **site name** highlighted in yellow. A pop-up window will appear showing limited regulatory information about the site. You may click on the Site Number for additional information.




See Interactive Map, continued on Page 3

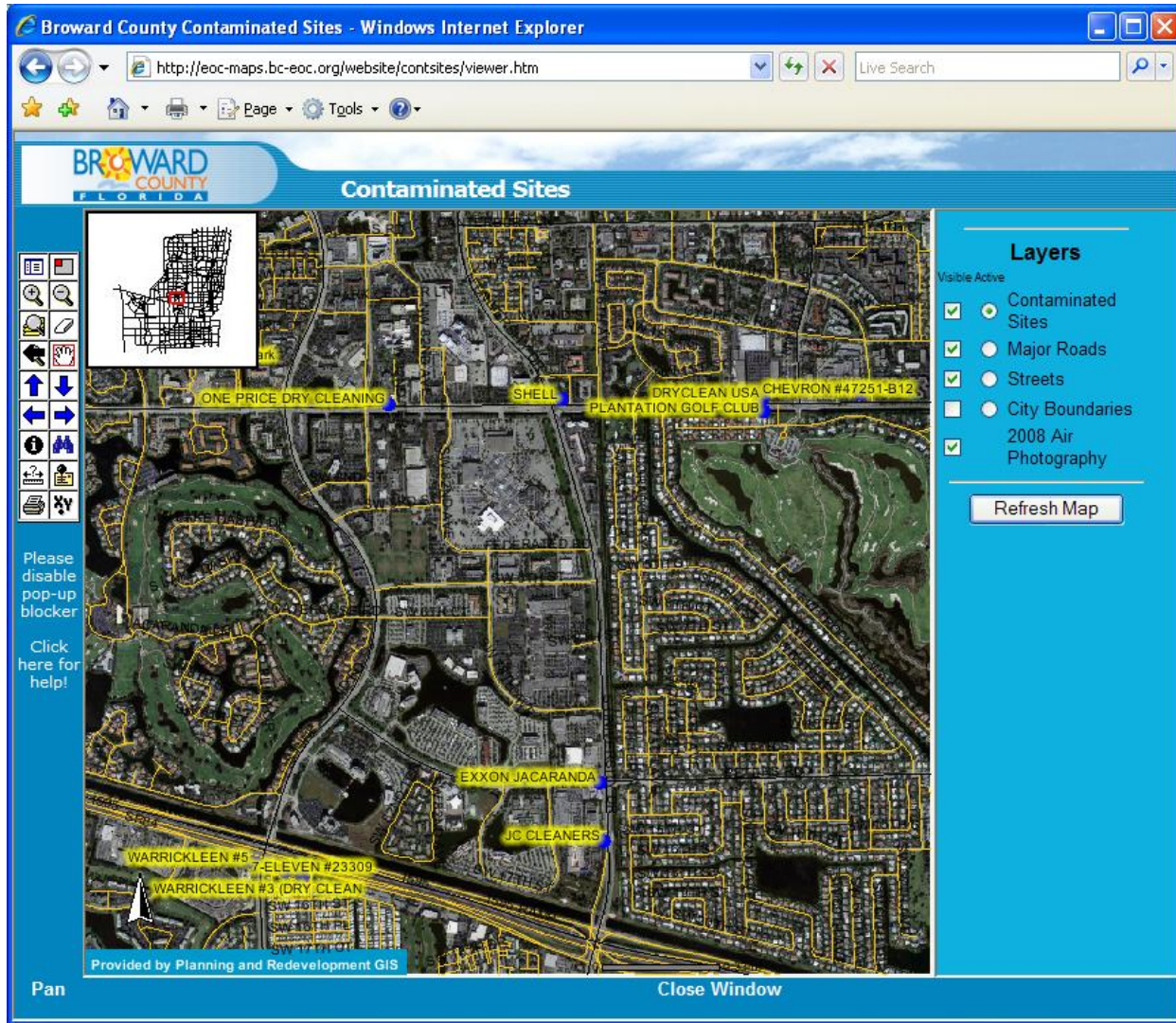
Broward County Board of County Commissioners – An Equal Opportunity Employer and Provider of Services


Josephus Eggelton, Jr. • Sue Gunzburger • Kristin D. Jacobs • Ken Keechl • Ilene Lieberman • Stacy Ritter • John E. Rodstrom, Jr. • Diana Wasserman-Rubin • Lois Wexler

Visit us on the Internet: www.broward.org

Interactive Map, continued from Page 2

There are several other useful features that can be activated by clicking on the icons on the left side of the webpage. Clicking on the Layers icon  accesses the layers list, which includes an aerial photography layer.



Clicking on the Find icon  opens a pop-up window that allows you to search for contaminated sites by words or numbers in the site name, address, site number, or Facility ID number.




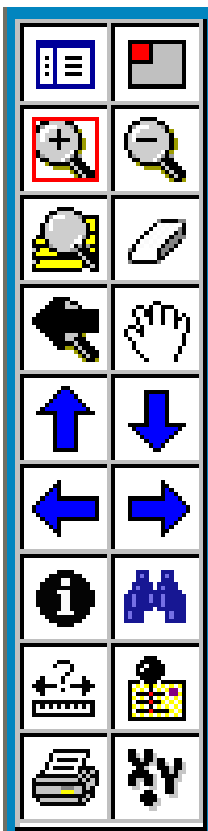
See *Interactive Map*, continued on Page 4



Interactive Map, continued from Page 3


For example, searching for “county” returns the following results:


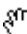
Rec	Site Number	Facility Name	Address	City	Zip Code	DEP Facility #	Program Type	Facility Type	Primary Pollutant	Lead Agency
1	1260	BROWARD COUNTY MOTOR POOL	1600 BLOUNT RD	Pompano Beach	33069	068732756	FDEP	Fuel Facility	Gasoline	BCEPD
2	1696	BROWARD COUNTY SCHOOL BOA	NW 7 AV & SISTRUNK BLVD	Fort Lauderdale	33312	069101762	FDEP	Fuel Facility	Petroleum	BCEPD
3	1282A	BROWARD COUNTY-MASS TRANS	5440 RAVENSWOOD RD	Fort Lauderdale	33312	068732769	FDEP	Fuel Facility	Mixed Product	BCEPD
4	2877	Broward County Fleet Service Center #2	2515 SW 4TH AVE	Fort Lauderdale	33315	068732764	NF	Auto Repair	Diesel; Gasoline	BCEPD
5	2898	BROWARD COUNTY SCHOOL BOA	851 NW 68TH AVE	Plantation	33317	069047376	FDEP		Petroleum	BCEPD
6	3086B	BROWARD COUNTY WTP #2	1351 NE 51ST ST	Pompano Beach	33064		NF	Manufacturing	Perc	BCEPD

The sites that are found will be highlighted on the map. If you click on the row number in the far left “Rec” column, the map will reorient to the location of that specific site. If this search had been conducted for “broward”, it would have returned all of the sites shown above, plus all of the sites with addresses on Broward Boulevard. The Locate Address tool  can be used in a similar way to search for contaminated sites by address; however, this feature requires the input of the site address and zip code in the exact format it is listed in the database, so it is often easier to use the Find feature instead of the Locate Address feature to search for sites.



The Measure icon  can be used to measure distances on the map. This is useful for determining if contaminated sites are located within a certain radius of a property. For example, Broward County requires a dewatering plan to be submitted if dewatering operations are conducted within 0.25 miles of a contaminated site (http://www.broward.org/pprd/cs_dewatering.htm). The Clear Selection icon  is used to clear the measurement lines from the map.

If you click the Return Decimal Degrees icon  and then click on any location on the map, a window will open showing the longitude (X) and latitude (Y) of the location in decimal degrees.

Clicking the Print icon  generates a printable version of the map in its current view. The rest of the icons are used to zoom in and out and to move the location of the map. Clicking the Pan icon  allows you to “grab and drag” the map to adjust the location.

Broward County has many additional interactive maps available at <http://gis.broward.org/>. These maps include census information, maps and photos of the Broward Artificial Reef program, an Air Photo Browser, and the Permit Information System map, which provides information about wellfield protection zones, wetlands, landfills, and many other categories.

The November/December 2008 edition of the [Broward Environmental Remediation Times](#) newsletter discussed additional mapping resources that may be useful for environmental assessments. For additional information, contact Paul Waite, P.E., at (954) 519-1467 or pwaite@broward.org.

Revised Groundwater Sampling Log

The Groundwater Sampling Log (Form FD 9000-24) used to report groundwater sampling activities has recently been updated by the Florida Department of Environmental Protection (FDEP), effective February 12, 2009. The revised Groundwater Sampling Log is available on-line:

Adobe pdf version: <ftp://ftp.dep.state.fl.us/pub/labs/assessment/formpdf/fd9000-24.pdf>.

Microsoft Word version (in the Forms section), along with additional FDEP Procedures and Guidance documents: http://www.dep.state.fl.us/waste/categories/pcp/pages/pg_documents.htm

Some of the key changes from the previous version of this form are:

- Form FD 9000-24 is no longer a part of the Quality Assurance Rule Standard Operating Procedure FS 2200, so the DEP-SOP-001/01 notation on top of the form is no longer present.
- Purging Equipment Codes are listed separately under the Purging Data Portion of the form. Sampling Equipment Codes are provided at the end of the Sampling Data portion of the Form.
- Field Decontamination information for tubing is required in the new form. A section has been added in the Sampling Data section.
- Sample Pump Flow Rate information is now located as a separate column in the Sampling Data portion of the form.

Please note that the use of the revised form is mandatory. This form must be used for reporting all groundwater sampling activities. For additional information, contact Sat Mellacheruvu, P.E., at (954) 519-1448 or smellacheruvu@broward.org.

Form FD 9000-24 GROUNDWATER SAMPLING LOG

SITE NAME:	SITE LOCATION:	
WELL NO:	SAMPLE ID:	DATE:

PURGING DATA

WELL DIAMETER (inches):	TUBING DIAMETER (inches):	WELL SCREEN INTERVAL DEPTH: feet to feet	STATIC DEPTH TO WATER (feet):	PURGE PUMP TYPE OR BAILER:							
WELL VOLUME PURGE: 1 WELL VOLUME = (TOTAL WELL DEPTH - STATIC DEPTH TO WATER) X WELL CAPACITY (only fill out if applicable) = (feet - feet) X gallons/foot = gallons											
EQUIPMENT VOLUME PURGE: 1 EQUIPMENT VOL. = PUMP VOLUME + (TUBING CAPACITY X TUBING LENGTH) + FLOW CELL VOLUME (only fill out if applicable) = gallons + (gallons/foot X feet) + gallons = gallons											
INITIAL PUMP OR TUBING DEPTH IN WELL (feet):		FINAL PUMP OR TUBING DEPTH IN WELL (feet):		PURGING INITIATED AT:	PURGING ENDED AT:	TOTAL VOLUME PURGED (gallons):					
TIME	VOLUME PURGED (gallons)	CUMUL. VOLUME PURGED (gallons)	PURGE RATE (gpm)	DEPTH TO WATER (feet)	pH (standard units)	TEMP. (°C)	COND. (circle units) μmhos/cm or μS/cm	DISSOLVED OXYGEN (circle units) mg/L or % saturation	TURBIDITY (NTUs)	COLOR (describe)	ODOR (describe)

Broward County's Government Center West Location Officially Open for Business

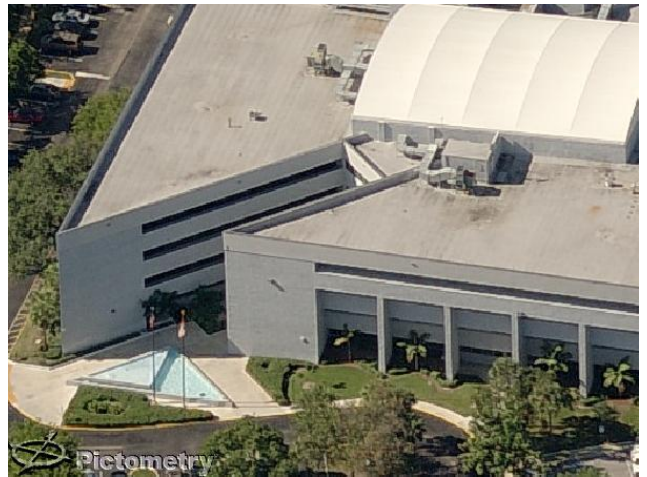
Broward County is pleased to announce that the Government Center West location now serves as its premier one-stop permitting location. On April 20, 2009, all staff in Broward County's [Development and Environmental Regulation Division](#) were relocated to the Government Center West complex, located at the northwest corner of the intersection of University Drive and Broward Boulevard in Plantation. **Effective immediately, any development (construction) plans which require Broward County's approval must be delivered to Government Center West rather than downtown Fort Lauderdale.** We ask for your patience as we strive to improve customer service during this transition period.

In addition, there are very important address changes to note at this time. All reports, documents, or correspondences to be delivered to Broward County's Pollution Prevention, Remediation and Air Quality Division should now bear the following mailing address:

**Broward County PPRAQD
1 North University Drive, Suite 203
Plantation, Florida 33324-2038**

Annual fee payments for Environmental Assessment and Remediation (EAR) Licenses should now be remitted to:

Clyde Anderson, Administrative Coordinator
Broward County Development and
Environmental Regulation Division
1 North University Drive, Suite 102
Plantation, Florida 33324-2038



Feedback Forum

In order to improve the services we provide and better understand your needs, we need your feedback! Do you have a suggestion for the Times newsletter? Are there areas in which the Division can serve you better?

There are several ways to contact us:

- If you would like to comment on any of the Broward County Pollution Prevention, Remediation, and Air Quality Division's services, you can access a survey at: <http://www.broward.org/pprd/>
- For questions or comments regarding this newsletter, you may contact Paul Waite at (954) 519-1467 or pwaite@broward.org
- If you have comments or questions regarding the Broward County Environmental Assessment and Remediation Section, you may contact Lorenzo Fernandez, P.E., at (954) 519-1249 or lfernandez@broward.org

We look forward to hearing from you!

