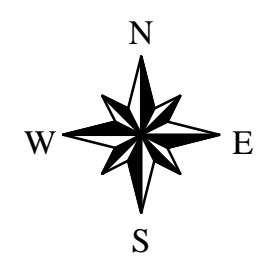


# Broward County LAPC's, ESL's, NRA's and Tree Resources

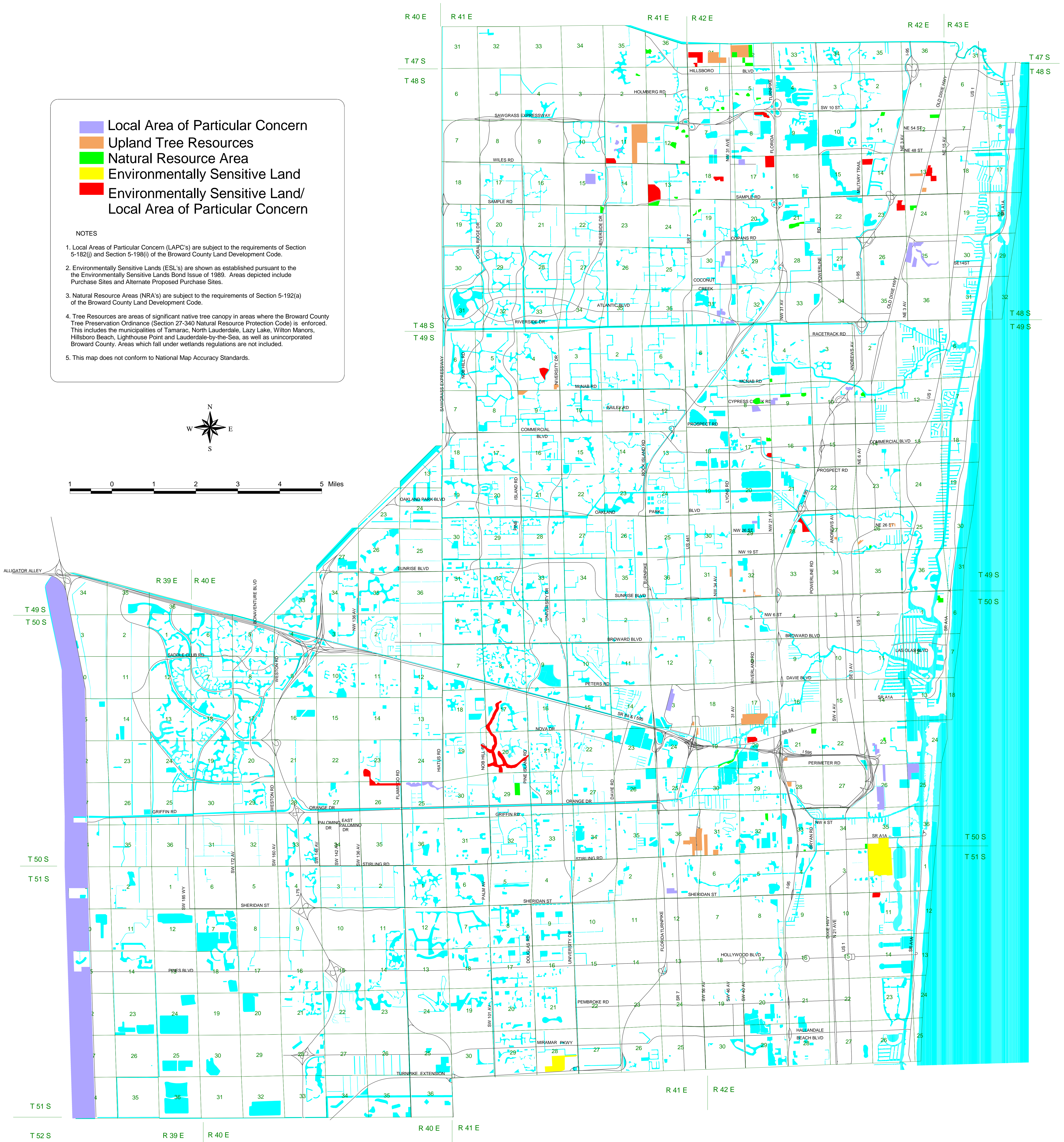
- Local Area of Particular Concern
- Upland Tree Resources
- Natural Resource Area
- Environmentally Sensitive Land
- Environmentally Sensitive Land/Local Area of Particular Concern

**NOTES**

1. Local Areas of Particular Concern (LAPC's) are subject to the requirements of Section 5-182(j) and Section 5-198(i) of the Broward County Land Development Code.
2. Environmentally Sensitive Lands (ESL's) are shown as established pursuant to the the Environmentally Sensitive Lands Bond Issue of 1989. Areas depicted include Purchase Sites and Alternate Proposed Purchase Sites.
3. Natural Resource Areas (NRA's) are subject to the requirements of Section 5-192(a) of the Broward County Land Development Code.
4. Tree Resources are areas of significant native tree canopy in areas where the Broward County Tree Preservation Ordinance (Section 27-340 Natural Resource Protection Code) is enforced. This includes the municipalities of Tamarac, North Lauderdale, Lazy Lake, Wilton Manors, Hillsboro Beach, Lighthouse Point and Lauderdale-by-the-Sea, as well as unincorporated Broward County. Areas which fall under wetlands regulations are not included.
5. This map does not conform to National Map Accuracy Standards.



0 1 2 3 4 5 Miles



**Broward County Department of  
Planning & Environmental Protection  
Geographic Information Systems**

March, 2000



rs0odeen: rs0odeenPC/1009.apr