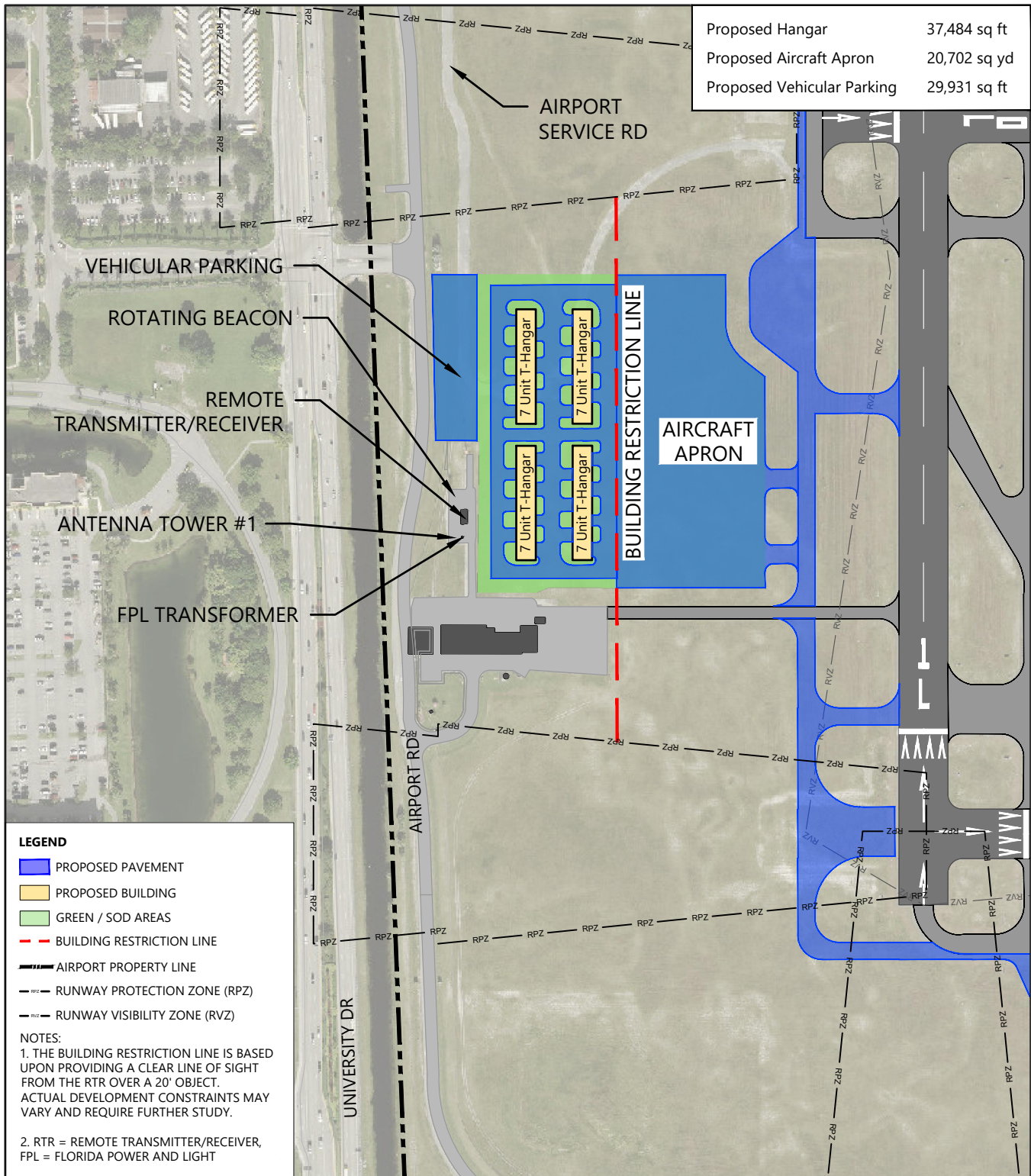


Appendix F

Preliminary Conceptual Hangar and Apron Layouts



SOURCES: Broward County Aviation Department, 2018 (HWO Aerial Photograph); Kimley-Horn and Associates, Inc., HWO Airfield Safety and Geometry Enhancements Study, April 2017.

PREPARED BY: American Infrastructure Development, Inc., September 2019.

EXHIBIT F1

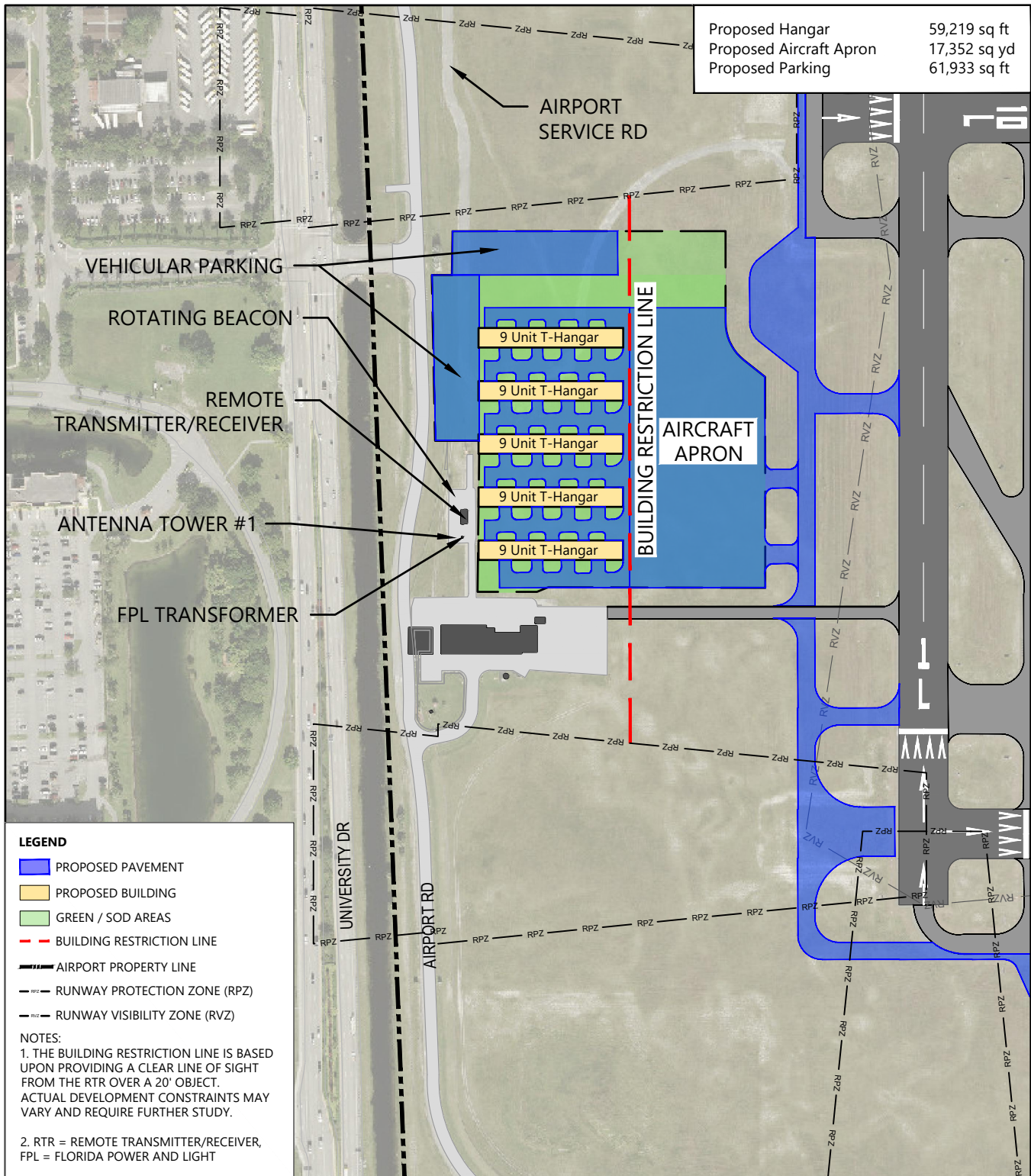


NORTH

0 300 ft.

Potential Hangar Development Alternative 1 - Parcel 3

Drawing: P:\Project-Miami\BCAD\2015 Master Plan Updates\02 - HWO Tasks\II-3 Alternatives\CAD\AID\HWO Available Parcels.dwg Layout: Parcel 3 Plotted: Nov 2, 2020, 03:33PM



SOURCES: Broward County Aviation Department, 2018 (HWO Aerial Photograph); Broward County Aviation Department, June 2016 (Tenant Leasehold Boundary Map); Kinley-Horn and Associates, Inc., HWO Airfield Safety and Geometry Enhancements Study, April 2017.
 PREPARED BY: American Infrastructure Development, Inc., September 2019.

EXHIBIT F2

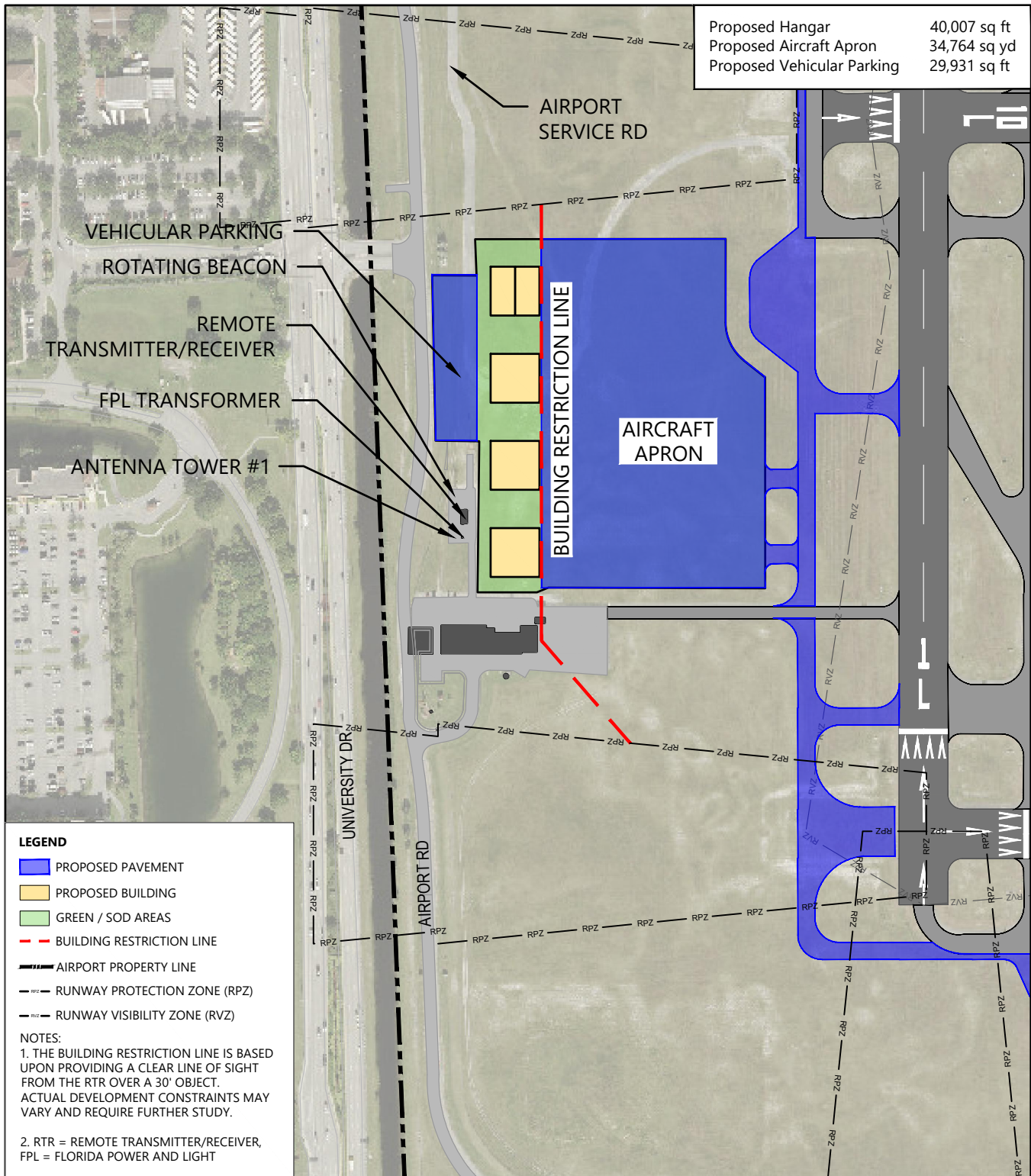


NORTH

0 300 ft.

Potential Hangar Development Alternative 2 - Parcel 3

Drawing: P:\Project-Miami\BCAD\2015 Master Plan Updates\02 - HWO Tasks\II-3 Alternatives\CAD\AID\HWO Parcel 4 & 5 Helipad.dwg Layout: Parcel 3 Plotted: Nov 2, 2020, 03:35PM



SOURCES: Broward County Aviation Department, 2018 (HWO Aerial Photograph); Broward County Aviation Department, June 2016 (Tenant Leasehold Boundary Map); Kinley-Horn and Associates, Inc., HWO Airfield Safety and Geometry Enhancements Study, April 2017.
 PREPARED BY: American Infrastructure Development, Inc., September 2019.

EXHIBIT F3

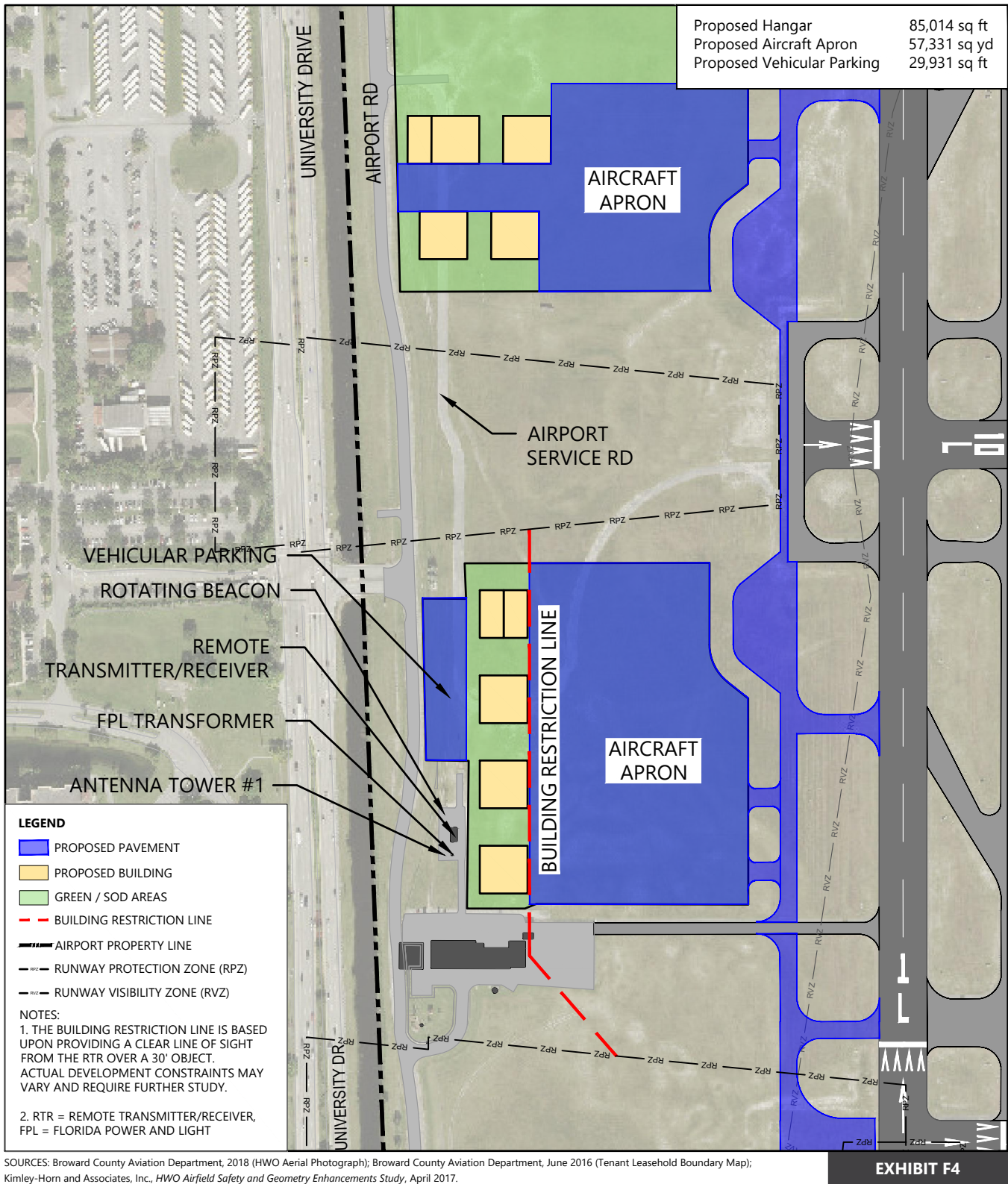


NORTH

0 300 ft.

Potential Hangar Development Alternative 3A - Parcel 3

Drawing: P:\Project-Miami\BCAD\2015 Master Plan Updates\02 - HWO Tasks\II-3 Alternatives\CAD\AID\HWO-LAND-FOR-DEV-ALT.dwg Layout: Parcel 3 Plotted: Nov 2, 2020, 03:37PM



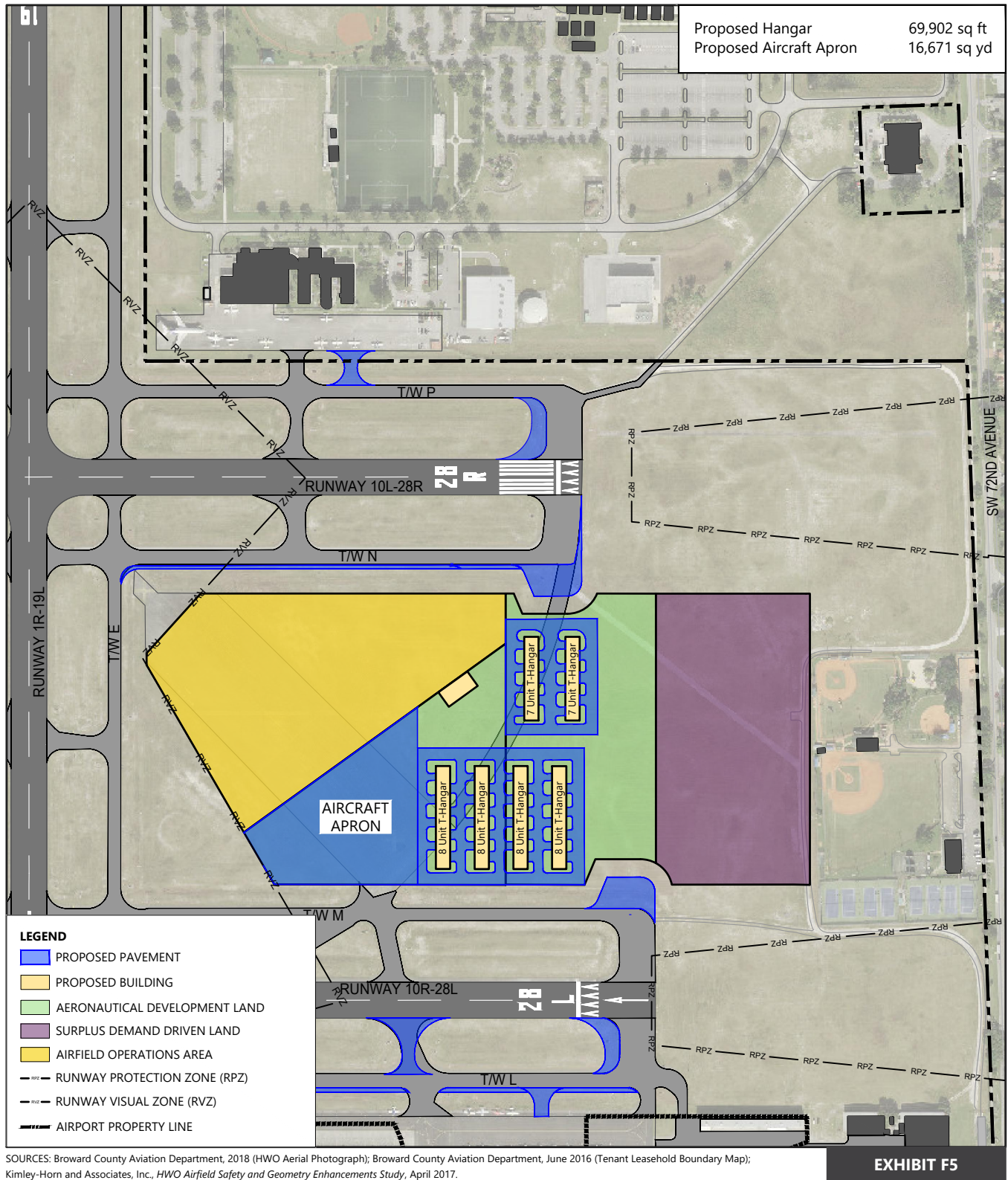
SOURCES: Broward County Aviation Department, 2018 (HWO Aerial Photograph); Broward County Aviation Department, June 2016 (Tenant Leasehold Boundary Map); Kinley-Horn and Associates, Inc., HWO Airfield Safety and Geometry Enhancements Study, April 2017.
PREPARED BY: American Infrastructure Development, Inc., September 2019.



0 300 ft.

Potential Hangar Development Alternative 3B - Parcel 3

Drawing: P:\Project-Miami\BCAD\2015 Master Plan Updates\02 - HWO Tasks\II-3 Alternatives\CAD\AID\HWO-LAND-FOR-DEV-ALT.dwg Layout: Parcel 1&3 Plotted: Nov 2, 2020, 03:37PM



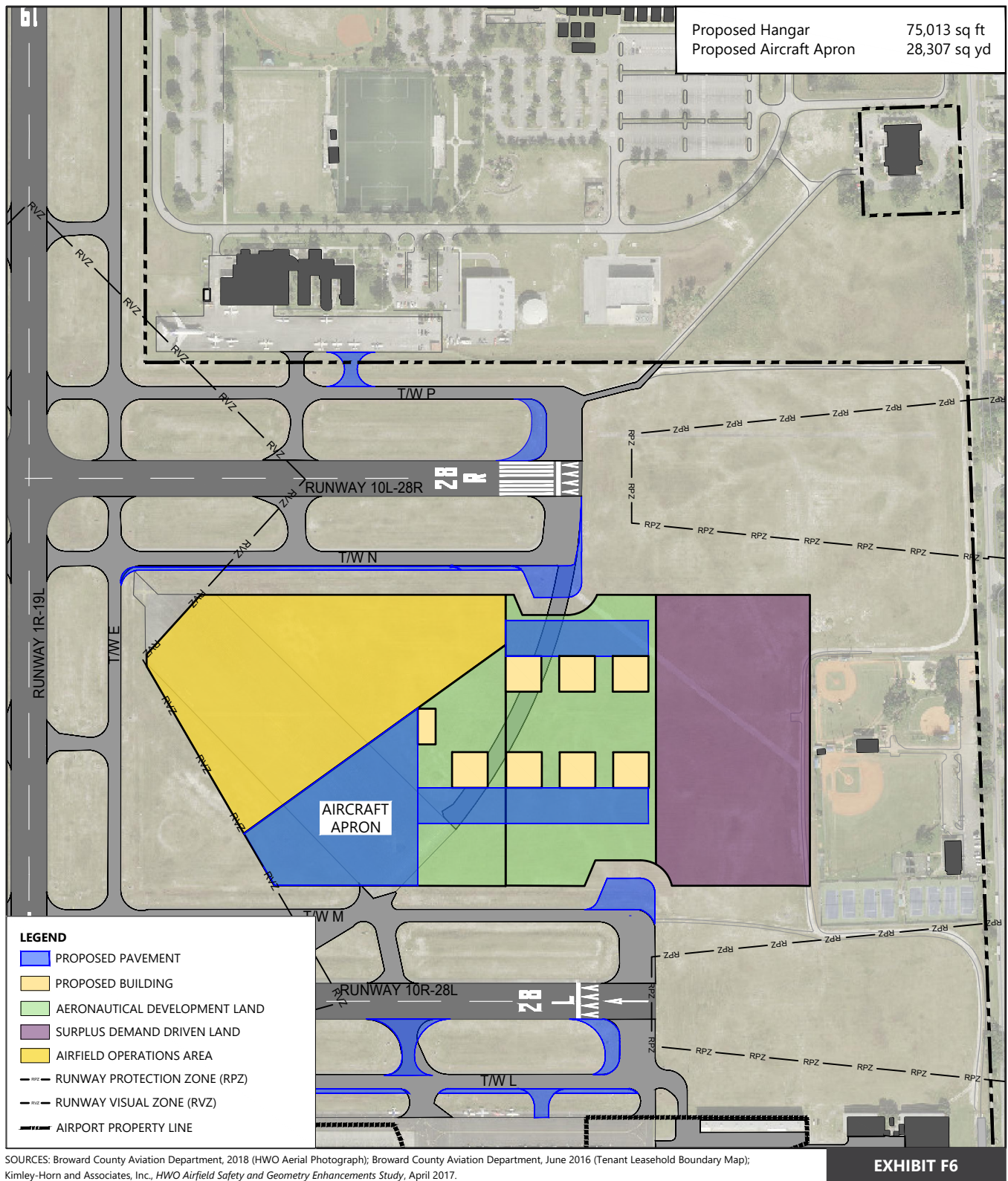
SOURCES: Broward County Aviation Department, 2018 (HWO Aerial Photograph); Broward County Aviation Department, June 2016 (Tenant Leasehold Boundary Map); Kimley-Horn and Associates, Inc., HWO Airfield Safety and Geometry Enhancements Study, April 2017.
PREPARED BY: American Infrastructure Development, Inc., September 2019.



0 400 ft.

Potential Hangar Development Alternative 1 - Parcels 4 and 5

Drawing: P:\Project\Miami\BCAD\2015 Master Plan Updates\02 - HWO Tasks\II-3 Alternatives\CAD\AID\HWO-LAND-FOR-DEV-PARC-45-ALTS.dwg Layout: Parcel 4&5 ALT1 Plotted: Nov 2, 2020, 03:45PM



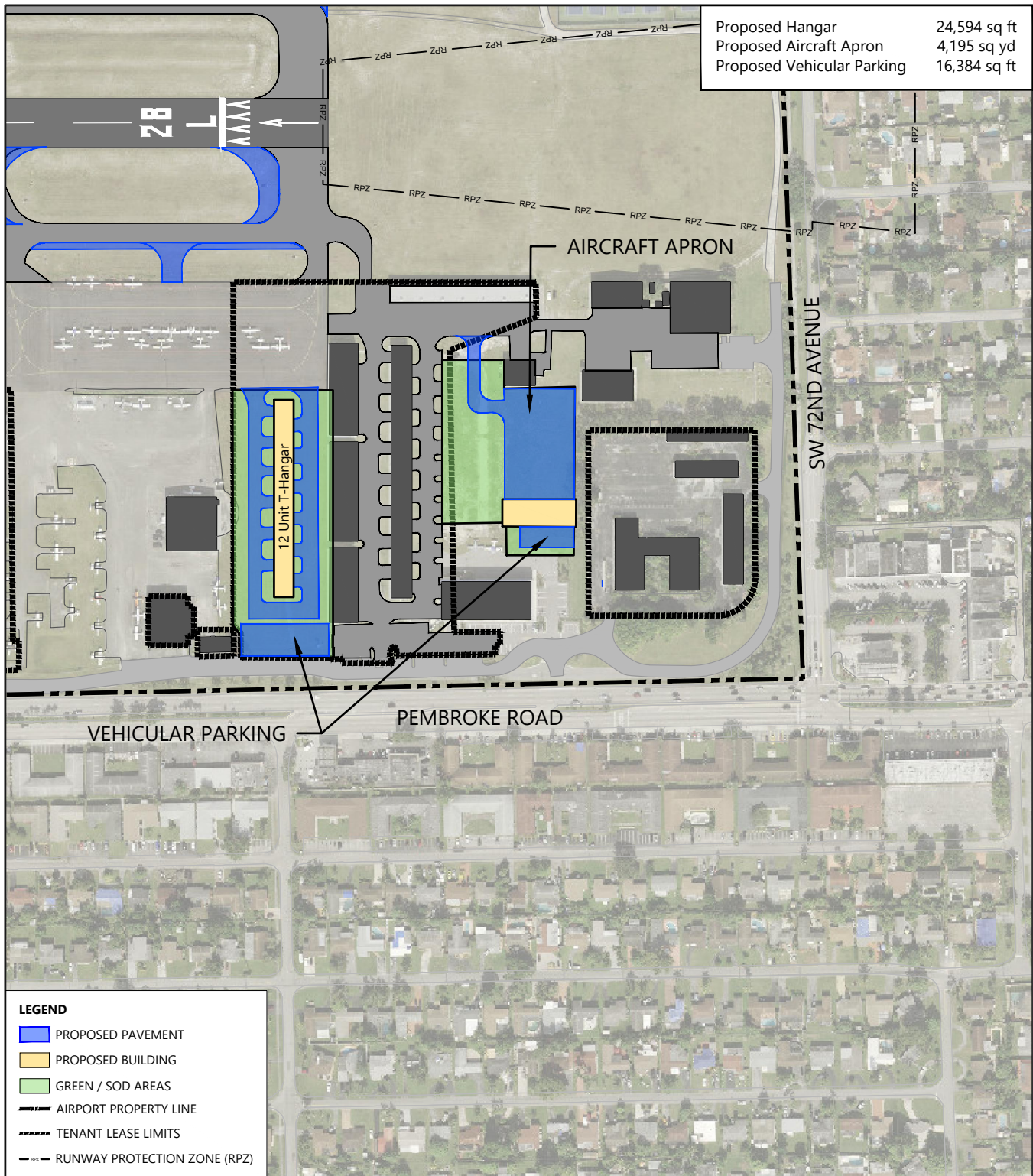
SOURCES: Broward County Aviation Department, 2018 (HWO Aerial Photograph); Broward County Aviation Department, June 2016 (Tenant Leasehold Boundary Map); Kimley-Horn and Associates, Inc., *HWO Airfield Safety and Geometry Enhancements Study*, April 2017. PREPARED BY: American Infrastructure Development, Inc., September 2019.



0 400 ft.

Potential Hangar Development Alternative 2 - Parcels 4 and 5

Drawing: P:\Project-Miami\BCAD\2015 Master Plan Updates\02 - HWO Tasks\11-3 Alternatives\CAD\AID\HWO-LAND-FOR-DEV-PARC-45-ALTS.dwg Layout: Parcel 4&5 ALT2 Plotted: Nov 2, 2020, 03:47PM



SOURCES: Broward County Aviation Department, 2018 (HWO Aerial Photograph); Broward County Aviation Department, June 2016 (Tenant Leasehold Boundary Map); Kimley-Horn and Associates, Inc. *HWO Airfield Safety and Geometry Enhancements Study*, April 2017.
PREPARED BY: American Infrastructure Development, Inc., September 2019.

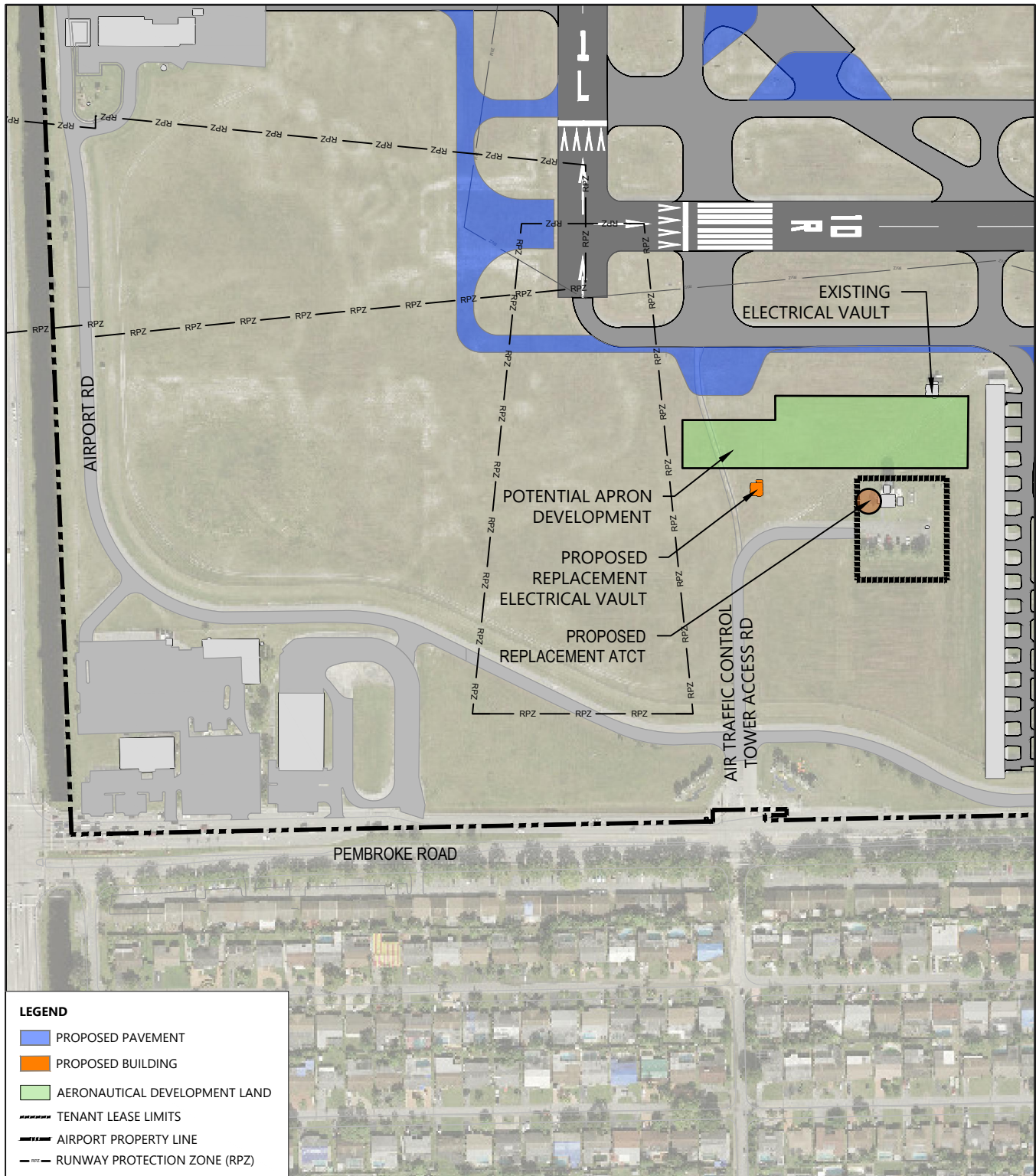
EXHIBIT F7



0 300 ft.

Potential Hangar Development Alternative 1 - Parcels 10 and 11

Drawing: P:\Project-Miami\BCAD\2015 Master Plan Updates\02 - HWO Tasks\11-3 Alternatives\CAD\AID\HWO Available Parcels.dwg Layout: Parcel 10&11 Plotted: Nov 2, 2020, 03:50PM



SOURCES: Broward County Aviation Department, 2018 (HWO Aerial Photograph); Broward County Aviation Department, June 2016 (Tenant Leasehold Boundary Map); Kimley-Horn and Associates, Inc., *HWO Airfield Safety and Geometry Enhancements Study*, April 2017.
PREPARED BY: American Infrastructure Development, Inc., September 2019.

EXHIBIT F8



0 300 ft.

Potential South Side Apron Development

Drawing: P:\Project-Miami\BCAD\2015 Master Plan Updates\02 - HWO Tasks\11-3 Alternatives\CAD\AID\HWO-LAND-FOR-DEV.dwg Layout: EX A8 Plotted: Nov 2, 2020, 03:52PM