

BMSD Code Compliance Semi-Annual Report

Jan 2026

SEMI-ANNUAL PERIOD STATISTICS (JULY – DECEMBER 2025)

Our BMSD Code Compliance Section:

- Conducted **1,551** field inspections
 - Performed **1,420** community standards inspections
 - Performed **131** land clearance inspections
- Opened **787** code enforcement cases
- Initiated **726** proactive enforcement cases
- Responded to **61** cases due to citizen complaints
- Issued **73** administrative citations
- Achieved compliance on **764** cases

Public Nuisance Abatement Activities:

- Declared **67** Land Clearing Public Nuisances
- Ordered **5** public nuisance lots abated by vendor
- Placarded **12** violations for junk vehicles and vessels
- Opened **218** cases for improper vehicle storage
- Issued **31** violations for prohibited open air storage

Property Maintenance and Minimum Housing:

- Issued **106** violations for property grounds maintenance
- Cited **20** locations for improper bulk items and trash placement
- Inspected **49** cases for building maintenance violations
- Opened **2** unsecured structure cases

Activities to improve property maintenance and community appearance:

- Issued **84** landlord registration violations
- Identified **470** violations for correction or referrals to other agencies
- Brought **58** cases into compliance before abatement required
- Complied **99** violations before official notice of violation necessary

The Code Compliance Section does not enforce municipal ordinances within other jurisdictions. Our area of routine patrol and complaint response is limited to the following neighborhoods located in the Broward Municipal Services District (BMSD) formally known as Unincorporated Broward County:

[Boulevard Gardens](#)

[Hillsboro Pines](#)

[Washington Park](#)

[Broadview Park](#)

[Hillsboro Ranches](#)

[Franklin Park](#)

[Roosevelt Gardens](#)

BMSD CODE COMPLIANCE HIGHLIGHTS:

MOBILE HOME AND RECREATIONAL VEHICLES

In the Broward Municipal Services District, zoning standards allow recreational vehicles (RVs) to be parked at residential homes, but are not allowed to be used for habitation, ensuring neighborhood character and safety consistent with residential land-use designations. It is prohibited to attach sewer or electrical service connections to an RV while at properties except temporary electrical hookup up to 48 hours before departure.

ELECTRICAL CONNECTION

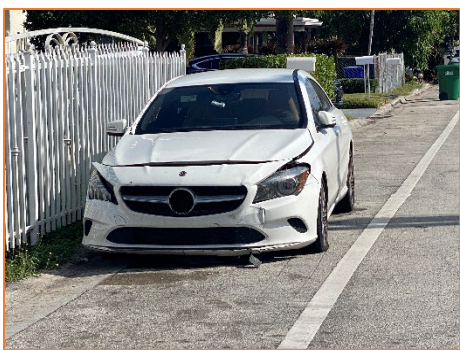


SEWER CONNECTION



BROADVIEW PARK NUISANCE ABATEMENT!

The County has launched a new dedicated Code Inspector program focused on identifying and addressing inoperable vehicles within residential neighborhoods in the Broward Municipal Services District. This initiative is intended to improve community safety, reduce visual blight and ensure compliance with restrictions on improper vehicle storage on unpaved surfaces.



HELP TO KEEP SIDEWALKS CLEAR IN OUR COMMUNITIES!

Property owners are responsible for maintaining all landscaping on their property in a manner that supports public safety, neighborhood walkability and community appearance. Trees, hedges, shrubbery and other vegetation must be regularly trimmed so that low-hanging branches or overgrown growth do not obstruct sidewalks, roadways or pedestrian paths. Routine landscape maintenance also helps to prevent an unkempt appearance and contributes to the overall cleanliness, safety and visual appeal of the neighborhood.

Report a complaint:

