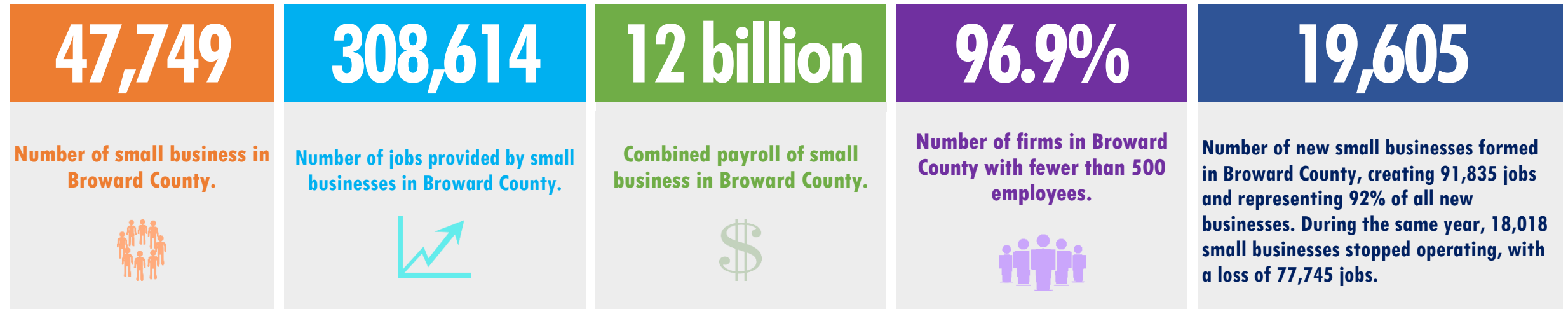


Small Business in Broward County

According to the U.S. Census Bureau's 2011 County Business Patterns Report:



2011	All Firms	Small Businesses*	
Number of Firms	49,257	47,749	96.9%
Total Employment	596,817	308,614	51.7%
Annual Payroll (\$ billions)	\$25.3	\$12	47.4%

*Less than 500 full or part-time employees
Source: U.S. Census Bureau, 2011 County Business Patterns

2010-2011	Businesses*			Employment	
	Total	Small	%	Total	Small
Opened	21,284	19,605	92%	119,835	76.7%
Closed	19,551	18,018	92%	77,745	69.9%

*Refer to "Enterprise" definition in Appendix
Source: U.S. Census Bureau, Statistics of U.S. Businesses

Small Businesses	Broward	Miami-Dade	Palm Beach	Florida	U.S.
Firms	47,749	65,441	36,007		
% of Total	96.9%	97.7%	96.7%	98.9%	99.7%
Employment	308,614	441,867	236,414		
% of Total	51.7%	53.7%	54.2%	42.8%	48.5%
Payroll (\$ billions)	\$12	\$17.1	\$9.7		
% of Total	47.4%	48.8%	51.1%	39.5%	12%

Source: U.S. Census Bureau, 2011 County Business Patterns

Number of businesses in Broward County that have no paid employees. Most of these individual businesses are individual proprietors or partnerships* **206,245**

*There is less published data about these businesses than those businesses with employees.

	2007	2011	Growth	Rate
ALL FIRMS				
Firms	52,547	49,257	-3,290	-6.3%
Employment	671,430	596,817	-74,613	-11.1%
Payroll (\$ billions)	\$26.9	\$25.3	-\$1.6	-5.9%
SMALL BUSINESS (LESS THAN 500 EMPLOYEES)				
Firms	51,005	47,749	-3,256	-6.4%
Employment	352,224	308,614	-43,610	-12.4%
Payroll (\$billions)	\$13	\$12	-\$1	-7.7%

Source: U.S. Census Bureau, 2007 & 2011 County Business Patterns. Note on sources: complete 2012 County Business Patterns data is incomplete and awaits completion of the 2012 Economic Census

3,300

Number of small businesses lost between 2007 and 2011, the negative rate of growth (-6.4 percent) was similar to that of all firms (-6.3 percent). Likewise job growth and payroll growth rates were also negative and slightly higher for small businesses.

COMPARED WITH STATEWIDE AND NATIONAL AVERAGES, SMALL BUSINESSES ACCOUNT FOR A SMALLER PROPORTION OF TOTAL FIRMS IN BROWARD COUNTY. HOWEVER, THEY PROVIDE MORE EMPLOYMENT AND PAYROLL PROPORTIONALLY THAN STATEWIDE AND NATIONALLY. THIS PATTERN IS SEEN THROUGHOUT THE METROPOLITAN AREAS IN MIAMI-DADE AND PALM BEACH COUNTIES.

NOTE ON DATA SOURCES: County Business Patterns is an annual series that provides subnational economic data by industry. Data is collected directly from all large businesses, and from a sample of small businesses. For small businesses that are not selected to receive census forms, basic data (sales, payroll, and number of employees) are obtained from administrative records. The U.S. Small Business Administration's (SBA) Office of Advocacy defines a small business for research purposes as an independent business having fewer than 500 employees; however, the SBA's Office of Size Standards has industry definitions of small businesses for government purposes

Distribution of Small Businesses by Industry Sector - 2011 (NAICS 2007 Code)

Professional, Scientific & Tech	17%
Retail Trade	13%
Health Care & Social Assistance	11%
Other Services	9%
Wholesale Trade	8%
All Others	8%
Construction	7%
Waste Management	7%
Finance & Insurance	6%
Accommod & Food Services	6%
Real Estate	5%

Source: U.S. Census Bureau, 2011 County Business Patterns

Growth Rate in Small Businesses by Industry Sector - 2009 & 2011 (NAICS 2007 Code)

Professional, Scientific & Tech	3.7%
Other Services	3.3%
Health Care & Social Assistance	3%
Retail Trade	2.3%
All Others	2.2%
Real Estate	1.9%
Accommod & Food Services	1.6%
Wholesale Trade	.4%
Waste Management	-0.4%
Finance & Insurance	-4.6%
Manufacturing	-4.9%
Construction	-9%

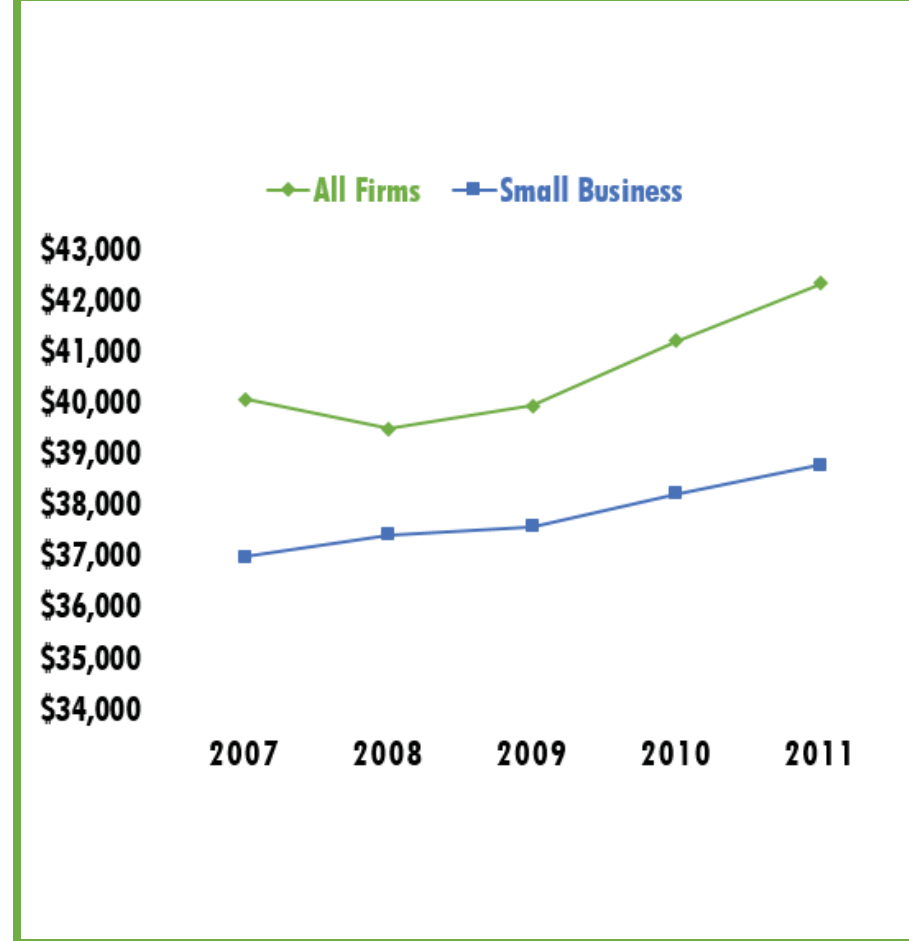
Source: U.S. Census Bureau, 2011 County Business Patterns

Distribution of Businesses with no Employees by Industry Sector 2011 (NAICS 2007 Code)

Other Services	19%
Professional, Scientific & Tech	13%
All Others	12%
Real Estate	11%
Waste Management	11%
Health Care & Social Assistance	10%
Construction	8%
Retail Trade	7%
Wholesale Trade	3%
Finance & Insurance	3%
Accommod & Food Services	2%
Manufacturing	1%

Source: U.S. Census Bureau, Nonemployer Statistics, 2011

Comparison of Average Annual Wage for all Firms and Small Businesses - 2007-2011



Source: U.S. Census Bureau, 2007-2011 County Business Patterns

NOTE ON DATA SOURCES: The All Others industry sector includes the following industrial sectors from the NAICS 2007 Code: 11 Agriculture, Forestry, Fishing and Hunting, 21 Mining, Quarrying, and Oil and Gas Extraction, 22 Utilities, 48-49 Transportation and Warehousing, 51 Information, 55 Management of Companies and Enterprises, 61 Educational Services, 71 Arts, Entertainment, and Recreation and 99 Industries not classified.

Technical Appendix

Data Definitions According to United States Census Bureau Glossary

Establishment: A business or industrial unit at a single physical location that produces or distributes goods or performs services.

Enterprise: An enterprise is a business organization consisting of one or more domestic establishments that were specified under common ownership or control. The enterprise and the establishment are the same for single-establishment firms. Each multi-establishment company forms one enterprise - the enterprise employment and annual payroll are summed from the associated establishments. [U.S. Census definitions](#)

Firm: A firm is a business organization consisting of one or more domestic establishments in the same state and industry that were specified under common ownership or control. The firm and the establishment are the same for single-establishment firms. For each multi-establishment firm, establishments in the same industry within a state will be counted as one firm- the firm employment and annual payroll are summed from the associated establishments.

Nonemployer Business: A nonemployer business is one that has no paid employees, has annual business receipts of \$1,000 or more (\$1 or more in the Construction industry), and is subject to federal income taxes.

Small Business: U.S. Small Business Administration Office of Advocacy defines a small business for research purposes as an independent business having fewer than 500 employees. [Firm Size Data](#)

Reference Links

U.S. Census Bureau, County Business Patterns

<http://www.census.gov/econ/cbp/index.html>

<http://www.census.gov/econ/susb/index.html>

U.S. Census Bureau Nonemployer Statistics

<http://www.census.gov/econ/nonemployer/index.html>

U.S. Census Bureau, Statistics of U.S. Businesses

<http://www.census.gov/econ/susb/index.html>



FOR MORE INFORMATION ABOUT BROWARD COUNTY SMALL BUSINESS PROGRAMS, PLEASE VISIT THE [OFFICE OF SMALL BUSINESS AND ECONOMIC DEVELOPMENT](#)