

BROWARD COUNTY PLANNING COUNCIL

115 SOUTH ANDREWS AVENUE, ROOM 307 ♦ FORT LAUDERDALE, FLORIDA 33301

TO: Marty Berger, Broward County Planning and Environmental Regulation Division
Maribel Feliciano, Broward County Pollution Prevention, Remediation & Air Quality Division
Christine Heshmati, South Florida Regional Planning Council
Dave Huizenga, Broward County Highway Construction and Engineering Division
John Ramos, Broward County Transportation Department
Buffy Sanders, Broward Metropolitan Planning Organization
Chon Wong, Florida Department of Transportation
Enrique Zelaya, Broward County Planning and Environmental Regulation Division

FROM: Pete Schwarz, Senior Planner 

DATE: July 2, 2012

RE: **Trafficways Plan Amendments – Final Action**

The Broward County Planning Council amended the Broward County Trafficways Plan on June 28, 2012, approving the following amendments:

TRAFFICWAY: **Martin Luther King, Jr. Boulevard / Hammondville Road**
LIMITS: Dixie Highway to Interstate 95
ACTION: Designated as an 80' "Context Sensitive Corridor – Urban Main Street" subject to the adopted Specific Right-of-Way Plan (see attached)

TRAFFICWAY: **Broward Boulevard**
LIMITS: Flamingo Road to Northwest 3 Street
ACTION: Deleted the segment of the Broward Boulevard Trafficway designated at 106' between Flamingo Road and Commodore Drive, and the segment of the Broward Boulevard Trafficway designated at 80' consisting of Commodore Drive between Broward Boulevard and Northwest 3 Street

An updated version of the Broward County Trafficways Plan Map dated June 28, 2012, reflecting the amended Trafficways is attached, and is also available in .PDF format on the Planning Council's website. If you have any questions regarding this amendment, please do not hesitate to contact me.

Thank you for your participation in the Trafficways Review Group.

TELEPHONE: 954.357.6695 ♦ FAX: 954.357.6685

www.broward.org/planningcouncil

Trafficways Review Group

July 2, 2012

Page 2

attachment

PMS/

cc: Barbara Blake Boy, Broward County Planning Council
Chris Walton, Broward County Transportation Department
Henry A. Sniezek, Broward County Planning and Environmental Regulation Division
Jeff Halsey, Broward County Pollution Prevention, Remediation and Air Quality Division
Richard Tornese, Broward County Highway Construction and Engineering Division
Scott Brunner, Broward County Traffic Engineering Division
Greg Stuart, Broward Metropolitan Planning Organization
Jim Murley, South Florida Regional Planning Council
Gus Schmidt, Florida Department of Transportation
Chris Akagbosu, School Board of Broward County
Robin Bird, City of Pompano Beach
Horacio Danovich, Pompano Beach CRA
Mike Vonder Muelen, Keith and Associates
Brett Butler, City of Plantation
Laurence Leeds, City of Plantation
Jonathan Keith, Centerline Homes

BROWARD COUNTY TRAFFICWAYS PLAN

LEGEND

Classification	Symbol	R/W
Limited Access/ Controlled		325'
Arterial		200'
		144'
		120'
		110'
		106'
		100'
Collector		94'
		80'
		70'
One-Way-Pair		54'
		42'
Right-of-Way Varies		0.0'
Context Sensitive Corridor		

AREA PLANNING BOARD Adoption Dates

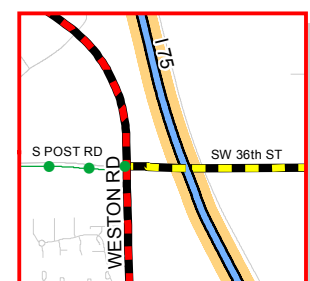
North: 10/9/62 Southeast: 11/7/63
 Central: 9/11/62 Southwest: 4/17/69

GENERAL NOTES

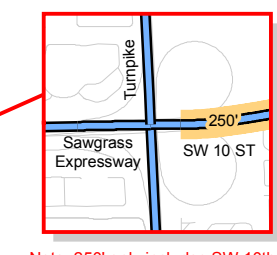
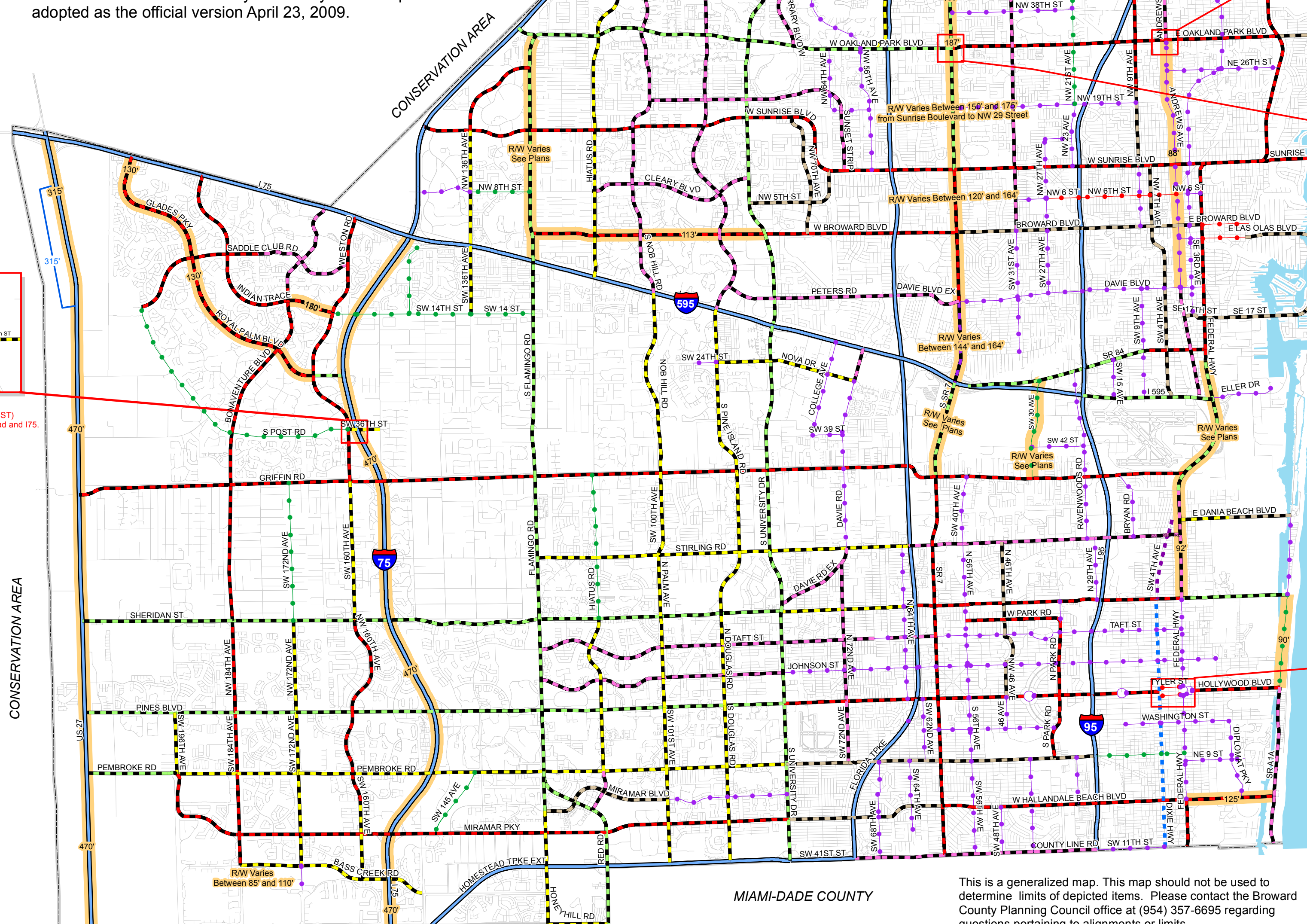
1. TRAFFICWAYS LOCATIONS ARE NOT PRECISE
 This plan shows traffic corridors, not precise alignments. Alignments will be determined as a result of detailed studies.
2. LOCAL ROADS
 Local roads are not included in the Trafficways Plan.
3. RIGHT-OF-WAY REQUIREMENTS
 The standard right-of-way requirements shown on the Trafficways Plan may be less than the standard width shown only where existing conditions preclude additional width and as determined and approved by the Planning Council.

Date of Last Revision
June 28, 2012

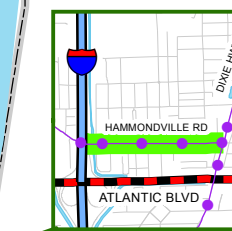
The GIS Version of the Broward County Trafficways Plan Map adopted as the official version April 23, 2009.



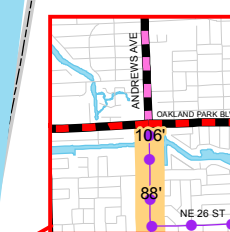
Note: S Post Road (SW 36 St) is 110' between Weston Road and 175.



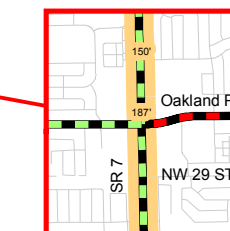
Note: 250' only includes SW 10th St.



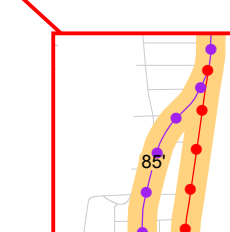
Note: Martin Luther King Jr Blvd/ Hammondville Road from 195 to Davie Highway Context Sensitive Corridor - Urban Main Street See Specific Right-of-Way Plan



Note: 106' ROW between Oakland Park Boulevard and South Row of the North Fork of the Middle River.



Notes: R/W Varies Between 187' and 200' from NW 29 St to Oakland Park Boulevard.
 R/W is 187' from Oakland Park Boulevard north for 600 feet.
 R/W is 150' from 600 feet north of Oakland Park Blvd to Lauderdale Lakes' northern city boundary.



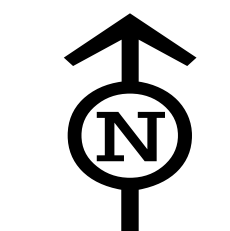
Note: 85' ROW between A1A and the Ocean



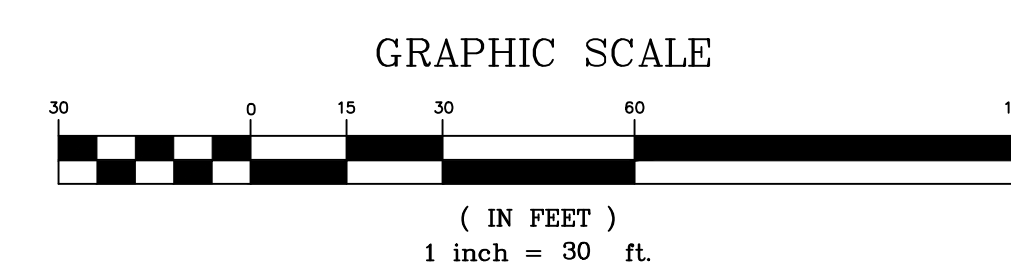
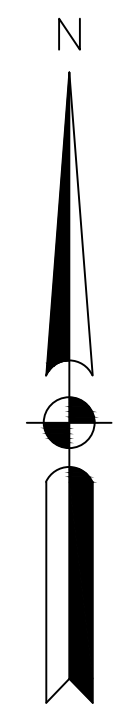
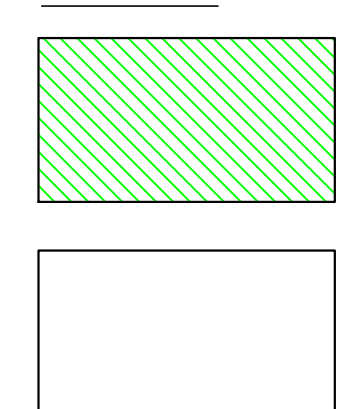
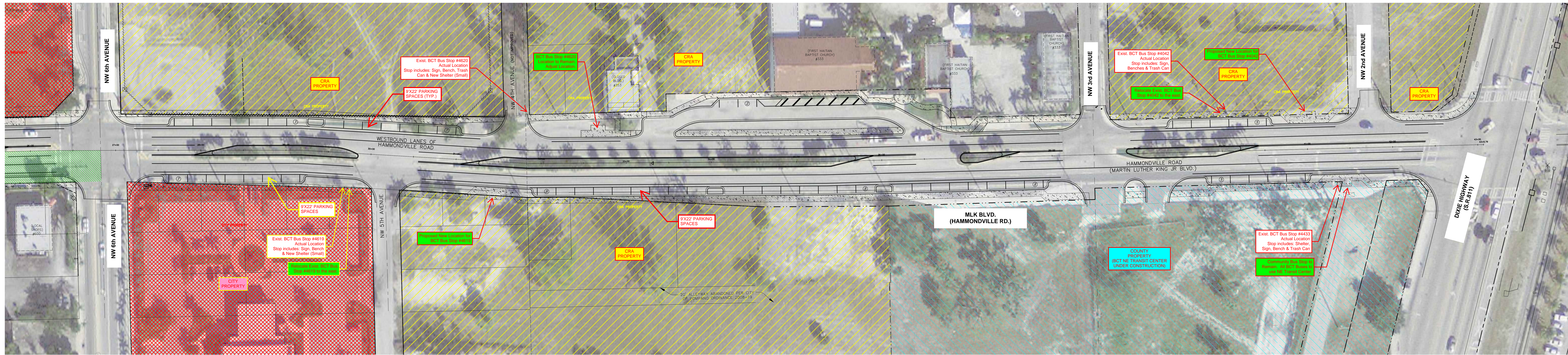
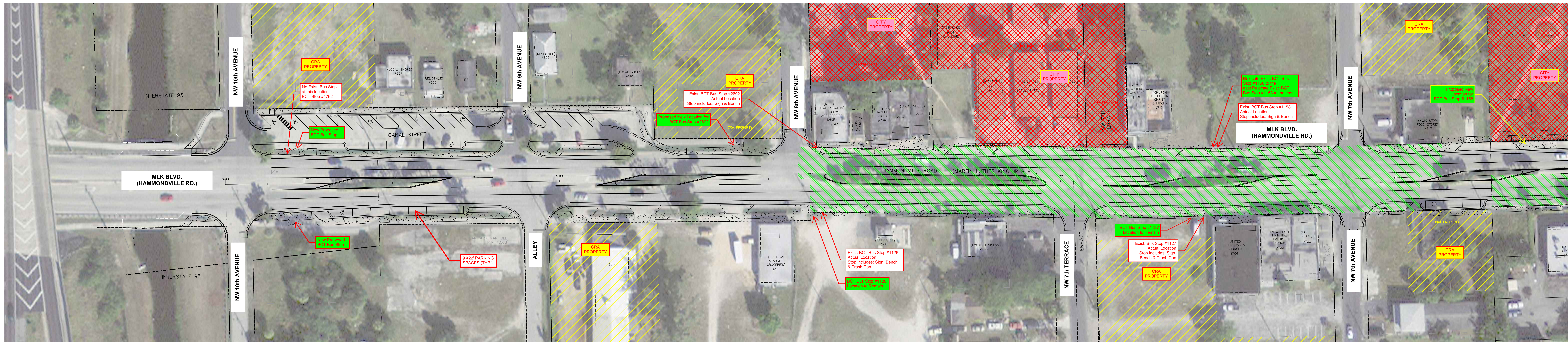
Note: Dade Hwy, Tyler St, Hollywood Blvd, Harrison St, Federal Hwy

MIAMI-DADE COUNTY

This is a generalized map. This map should not be used to determine limits of depicted items. Please contact the Broward County Planning Council office at (954) 357-6695 regarding questions pertaining to alignments or limits.



Not to Scale
For Informational
Purposes Only



MLK BLVD. (HAMMONDVILLE RD.) BROWARD COUNTY TRAFFICWAYS AMENDMENT EXHIBIT

TOTAL NUMBER OF ROADSIDE PARKING SPACES: 95

CITY OF POMPANO BEACH

BROWARD COUNTY, FLORIDA

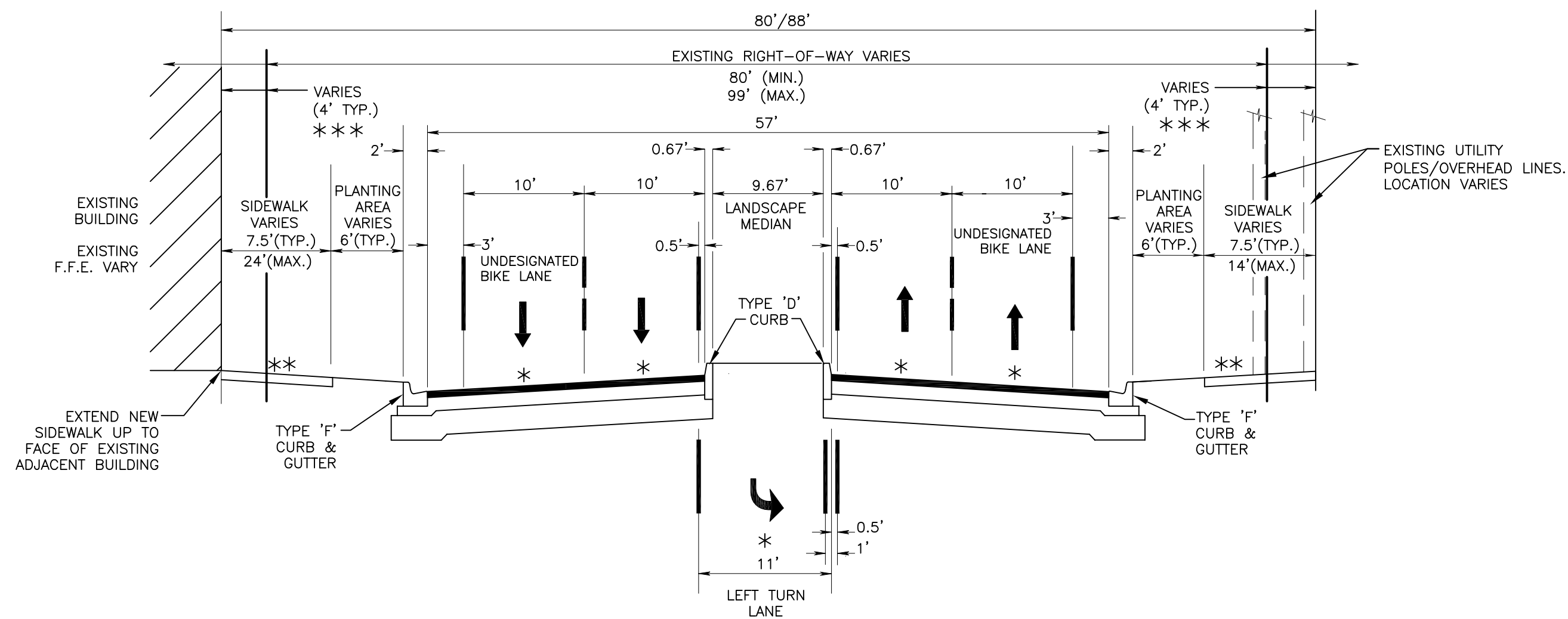


301 EAST ATLANTIC BOULEVARD
POMPANO BEACH, FLORIDA 33060-6643
(954) 788-3400 FAX (954) 788-3500
STATE OF FLORIDA CERTIFICATE OF
AUTHORIZATION NUMBER - 7928

DATE	REVISION
5/11/12	REVISED PER CRA COMMENTS

DATE:	APRIL 2012
SCALE:	1" = 30'
DRAWN BY:	D.C.
DESIGN BY:	M.C.
CHECKED BY:	J.T.

SHEET NO.	E-1
PROJECT NO.	07470.46



TYPICAL 80'/88' ROADWAY SECTION WITH NO ROADSIDE PARKING

N.T.S.

SOUTH SIDE

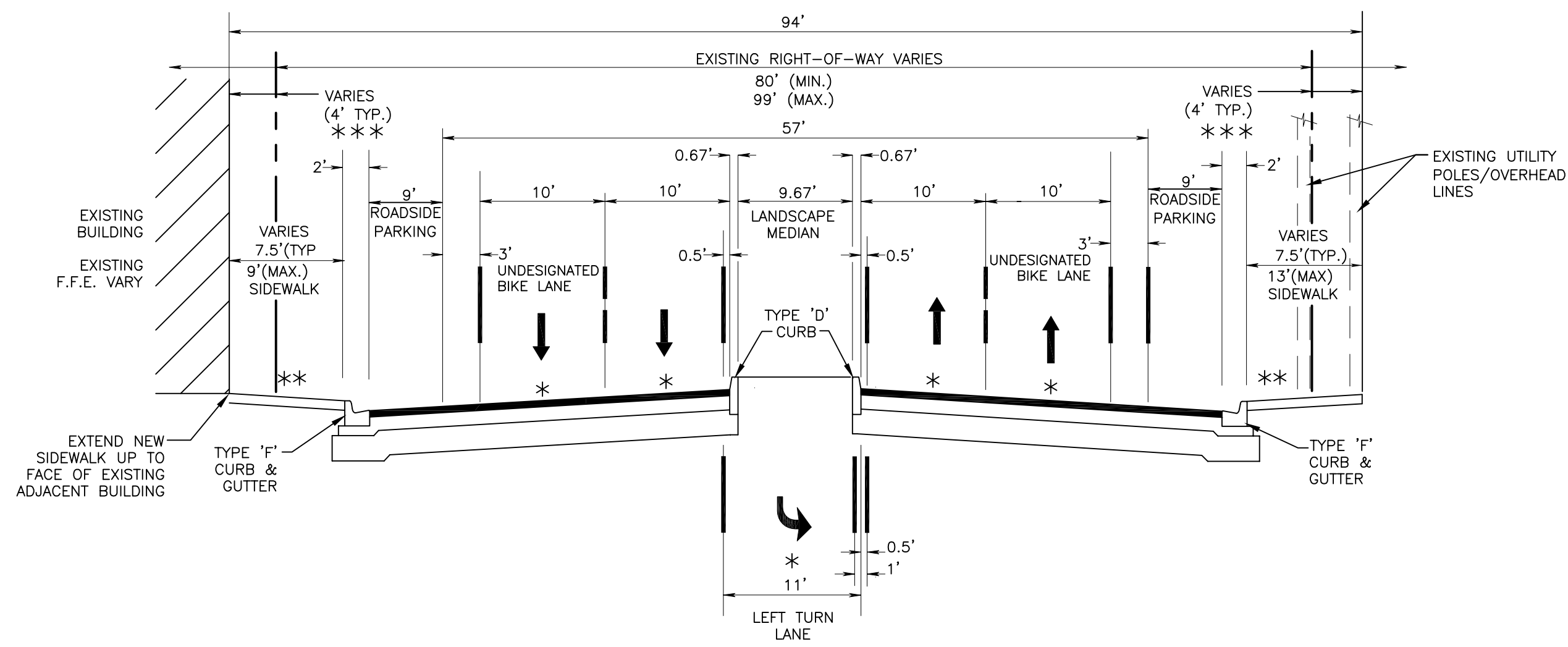
STA. 17+00 TO STA. 24+30

STA. 25+16 TO STA. 26+82

NORTH SIDE

STA. 16+86 TO STA. 24+57

- * MATCH EXISTING CROSS SLOPE (VARIES 0.01 TO 0.04)
- ** PROPOSED SIDEWALK CROSS SLOPE 0.01 (TYP.) (0.02 MAX.)
- *** PROPOSED SIDEWALK ENCROACHMENTS INTO EXISTING PROPERTIES VARY (4' TYP.). PROPOSED SIDEWALK TO EXTEND UP TO EXISTING FACE OF BUILDINGS WHEN REQUIRED.



TYPICAL 94' ROADWAY SECTION WITH ROADSIDE PARKING

N.T.S.

SOUTH SIDE

STA. 10+00 TO STA. 17+00

STA. 24+30 TO STA. 25+00

STA. 27+00 TO STA. 43+00

NORTH SIDE

STA. 10+00 TO STA. 17+00

STA. 24+50 TO STA. 43+00

- * MATCH EXISTING CROSS SLOPE (VARIES 0.01 TO 0.04)
- ** SIDEWALK CROSS SLOPE 0.01 (TYP.) (0.02 MAX.)
- *** PROPOSED SIDEWALK ENCROACHMENTS INTO EXISTING PROPERTIES VARY (4' TYP.). PROPOSED SIDEWALK TO EXTEND UP TO EXISTING FACE OF BUILDINGS WHEN REQUIRED.

DATE: OCTOBER, 2011
 SCALE: N.T.S.
 DRAWN BY: D.C.
 DESIGN BY: M.C.
 CHECKED BY: J.T.

REVISION	DATE



K. E. H. H.
 CONSULTING ENGINEERS, INC.
 301 EAST ATLANTIC BOULEVARD
 POMPANO BEACH, FLORIDA 33060-6643
 (954) 788-3400 FAX (954) 788-3500
 STATE OF FLORIDA CERTIFICATE OF AUTHORIZATION NUMBER - 7928

**MLK BLVD. (HAMMONDVILLE RD.)
 B.C. TRAFFICWAYS AMENDMENT**
 (DOWNTOWN POMPANO BEACH CONNECTIVITY)
 PRELIMINARY TYPICAL ROADWAY SECTIONS
 CITY OF POMPANO
 BROWARD COUNTY, FLORIDA

SHEET NO. **F-2**

PROJECT NO. **07470.46**

N:\07\07470.46 Downtown Connectivity Plan - PB CRA Engineering\Cadd\dwg\07470.46 rdway sections (WithBike).dwg

MARTIN LUTHER KING BLVD. (HAMMONDVILLE RD.) TRAFFICWAYS AMENDMENT
DESIGN CRITERIA FOR CONSTRUCTION OF STREETS
WITHIN TRAFFICWAY CORRIDORS
Trafficway Roadways

Design Factor	Existing Trafficways Plan Classification of MLK Blvd. 4-Lane Collector	Available "Context Sensitive Corridor" Criteria for Trafficway Roadways 7. 80-94 ROW (8) Urban Main Street. OPTION B (5-Lane undivided)	Requested / Adjusted "Specific Context Sensitive Corridor" Criteria for MLK Blvd. 80-94 ft. Urban Main Street (with easements). 4-Lane Divided
Generalized Volume (ADT)	9,600-24,300	9,600-24,300	9,600-24,300
Vehicular Access	Pursuant to provisions of Sections <u>5-195(b)(11)</u>	Pursuant to provisions of Sections <u>5-195(b)(11)</u>	Pursuant to provisions of Sections <u>5-195(b)(11)</u>
Design Speed	40 mph	25-30 mph	25-30 mph
Typical Streets Spacing	Pursuant to provisions of Sections <u>5-195(b)(11)</u>	Pursuant to provisions of Sections <u>5-195(b)(11)</u>	Pursuant to provisions of Sections <u>5-195(b)(11)</u>
Minimum Thru- Lane Width	11 ft	11ft	10ft
Pavement Width	48 – 56 ft.		
Pavement Markings	Thermoplastic	Thermoplastic	Thermoplastic
Driveway Design	Street Type	Street Type	Street Type
On-Street Parking	Prohibited	Yes	Yes
Median Width w/ Curb and Gutter	15.5-22 ft	11 ft (Center left turn lane)	11 ft (Center left turn lane)
Border Width	7-10 ft	8 ft	>=8 ft (with sidewalk/landscape easements)
Left Turn Lanes	Yes	Yes	Yes
Exclusive right turn lane Required at intersections & driveways	Yes	No	No
Traffic Signal	As Warranted	As Warranted	As Warranted
Pedestrian Crossings	At intersections Only	At intersections and at Mid-block (Non-Peak) with special treatment approved by County	At intersections and at Mid-block (Non-Peak) with special treatment approved by County
Approach Widening (Intersection Imp.)	Yes	No	No
Right-of-Way	As Required by the Broward County Trafficways Plan (80')	80' – 94'	80'/88' Typ. in segments with No On-street Parking (w/ easements) 94' Typ. in segments with On-street Parking (w/ easements)
Design Vehicle	SU and WB-50	SU and WB-50	SU and WB-50
Sidewalks	Yes	Yes (Min 11.5 ft with easement)	Yes - 7.5 Typ. & 6' Min. (with easements)
Bikeways	Yes 4/5 ft	Yes 5 ft	Yes 3 ft (undesigned)