



# BROWARD COUNTY

## Board of County Commissioners



Consulting Services for Pompano Park Place from Powerline Road to S. Cypress Road

Presentation ♦ May 11, 2020

THE CORRADINO GROUP

## INTRODUCTION

# THE CORRADINO TEAM

- Celebrating our **50th** Year in Business in 2020
- **Local Broward County office registered since 1994**
- **Team of Subconsultants with Headquarters in Broward County that will meet or exceed the CBE goals**
- Leaders in the adoption of the Penny for Transportation Sales Tax Initiative - Mobility Advancement Program
- **Relevant recent Broward County experience including program management of mast arm conversions for 35 intersections (design build)**
- Leader in FDOT PD&E, Roadway Design and Construction Engineering and Inspection services
- **Public Outreach and Involvement Expertise – The Corradino Group and Garth Solutions**



DBE, SBE, CBE



DBE, SBE, CBE



CBE



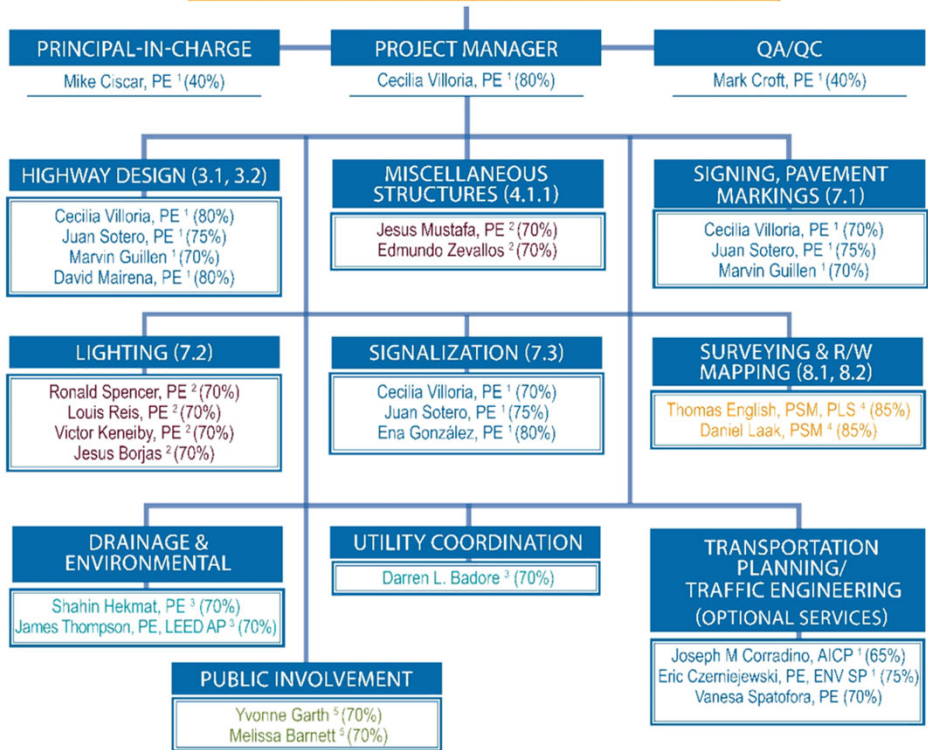
CBE

THE CORRADINO GROUP

# INTRODUCTION



BROWARD COUNTY BOARD OF COUNTY COMMISSIONERS



**LEGEND:**

- 1 | The Corradino Group, Inc.
- 2 | BMA Consulting Engineering,
- 3 | Thompson & Associates, Inc.
- 4 | HSQ Group, Inc.
- 5 | Garth Solutions, Inc.
- (%) AVAILABILITY

## THE CORRADINO TEAM

- **Meet all FDOT Technical Pre-Qualification Requirements**
  - ❖ 3.1 Minor Highway Design
  - ❖ 3.2 Major Highway Design"
  - ❖ 7.1 Signing, Pavement Marking and Channelization
  - ❖ 7.2 Lighting
  - ❖ 7.3 Signalization
  - ❖ 8.1 Control Surveying
  - ❖ 8.2 Design, Right of Way Construction Surveying
  
- **Additional Services**
  - ❖ 6.1 Traffic Engineering Studies
  - ❖ 6.2 Signal Timing Optimization
  - ❖ 15.0 Landscape Architect

## INTRODUCTION

# THE CORRADINO TEAM – KEY STAFF



### **Mike Ciscar, PE - Principal In Charge**

- Vice President of Engineering and Planning
- 34 years of experience in the field of civil and transportation engineering
- **16 yrs. FDOT D6 experience**
- 5 ½ yrs. FDOT D6 District Environmental Management Engineer



### **Cecilia Villoria, PE- Project Manager**

- 26 years of experience in all aspects of Project Management, Scheduling, Roadway Design, MOT, Signalization
- SR-9/I-95 at SR-848/Stirling Road Interim Improvements Broward County, FDOT D4 - *PM and Roadway EOR*



### **Juan Sotero, PE- Project Engineer**

- 18 years of experience in the fields of civil and roadway engineering
- SR-9/I-95 at SR-848/Stirling Road Interim Improvements Broward County, FDOT D4 – *Project Engineer*



### **Mark Croff, PE - QA/QC**

- Vice President of Construction Engineering
- 32 years managing Construction Projects and Programs for FDOT
- **16 yrs. FDOT D6 experience as head of the Construction Engineering Division**



### **Eric Czerniejewski, PE, ENV SP- Traffic**

- 23 years of transportation planning and traffic engineering experience
- Program Manager of 20 mast arm conversions for Broward County
- **5 yrs. exp. as City Traffic Engineer for City of Pembroke Pines, Towns of Weston and Surfside**



### **Jesus Mustafa, PE- Structures**

- 21 years of experience in highway and interstate design, PD&E, and planning projects
- Broward County Continuing Engineering Services for Transportation and GEC Projects Contract No.: RFP No. PNC2114364P1 (on going).

## INTRODUCTION

# THE CORRADINO TEAM – KEY STAFF



### **Shahin Hekmat, PE - Drainage/Env.**

- 28 years of experience
- City Engineer – City of Weston
- **Consulting Engineer – City of Weston, City of Sunny Isles Beach, City of North Lauderdale**
- **District Drainage Engineer – S. Broward, Indian Trace, Bonaventure Dev., N. Lauderdale**



### **Darren Badore – Utility Coordination**

- Vice President with 20 years of experience 16 yrs.
- **Currently serving on the City of Plantation's Planning & Zoning Board**
- Bridges of the Isles Utility Coord., Ft. Lauderdale
- Stirling Road (from University Dr. to SR 441) Utility Coord.



### **Thomas English, PSM, PLS -Survey**

- 26 years of experience as a Survey Project Manager for FDOT projects (R/W, Utility Locates & GIS Mapping)
- FDOT D4 -SW 40th Avenue from Stirling Road to Griffin Road
- Terra Mar Drainage Improvements (Lauderdale by the Sea)



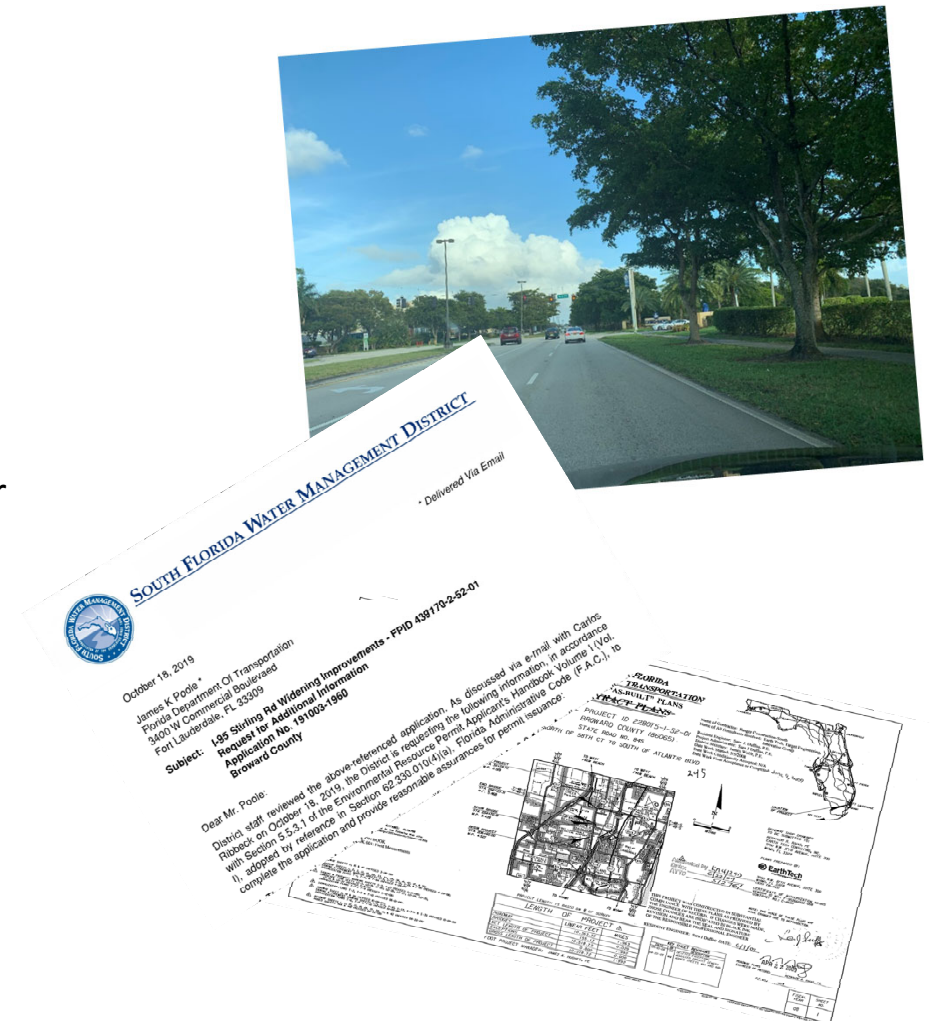
### **Yvonne Garth- Public Involvement**

- 25 years of experience in creating and leading proven economic development & outreach programs
- Ft. Lauderdale Airport, Ft. Lauderdale, FL: Master Plan Study
- Broward County Convention Center, Ft. Lauderdale, FL: Expansion Master Plan Study
- **City of Fort Lauderdale Las Olas Beach Park project, Public Involvement**

# UNDERSTANDING OF THE SCOPE OF SERVICES

## TEAM EFFORTS

- **Met with City of Pompano Beach Staff**
  - **Horacio Danovich** – CIP Engineer
  - **John Sfiropoulos** – City Engineer
- **Met with Broward MPO Staff**
  - **Ricardo Gutierrez**– Livability/Mobility Program Manager
- Reviewed as-builts
- Spoke with Permitting Agencies (SFWMD)
- Conducted Field Reviews
- Completed Crash Review in Signal Four Analytics
- Completed preliminary Pompano Park Place Link Analysis

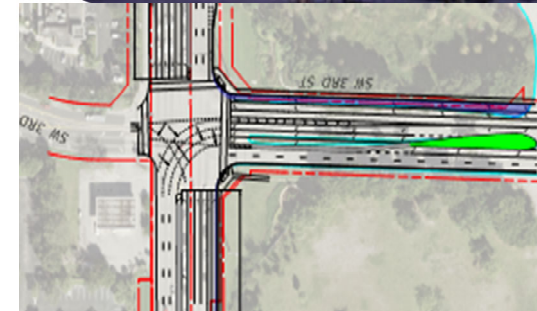


# UNDERSTANDING OF THE SCOPE OF SERVICES

## TEAM EFFORTS

- Reviewed Proposed Improvements
  - **Live! Resorts Pompano**
    - ❖ Major redevelopment site at the SE corner of the intersection of SR 845 and SW 3rd Street
    - ❖ Proposed Phased Traffic Mitigation Improvements Include:
      - New Signal at SW 3rd Street and SW 15th Avenue
      - Pompano Park Place and Powerline Rd. Improvements:
        - Addition of a second westbound right-turn lane
        - Addition of a third westbound left-turn lane
        - Addition of a westbound right-turn overlap phase
        - Signal timing optimization
  - Signal timing optimization for the intersection of SW 3rd Street/Racetrack Road/Pompano Park Place and SW 23rd Avenue/West Project Driveway

Live! Resorts Pompano



THE CORRADINO GROUP

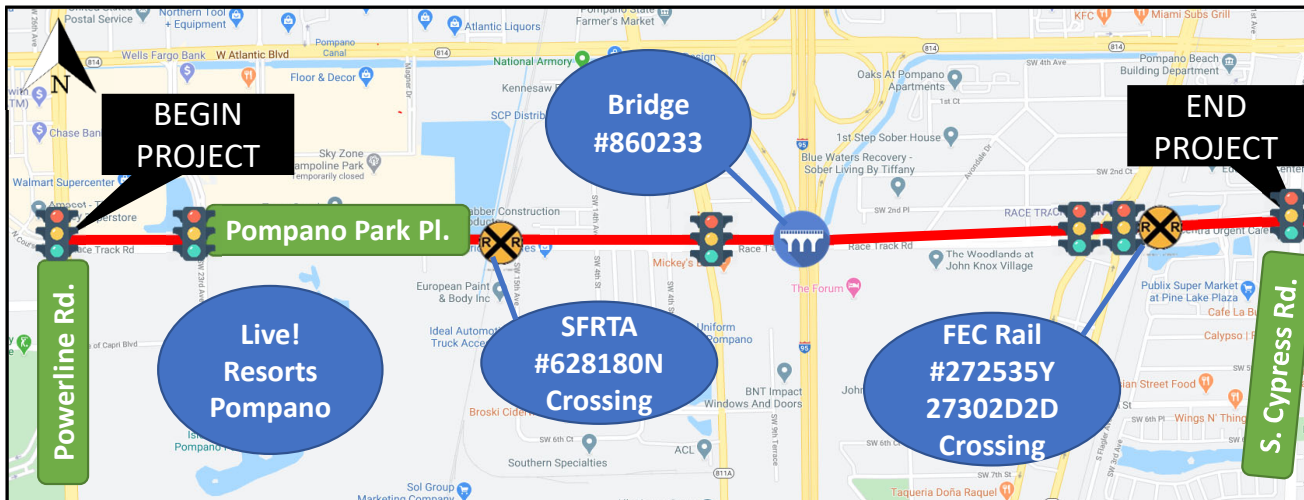
# UNDERSTANDING OF THE SCOPE OF SERVICES

## PROJECT PURPOSE

- Provide a Complete Streets Project
- Enhancing safety for all users
- Balancing mobility and accessibility
  - ❖ Motorists
  - ❖ Bicycle Facility Infrastructure
  - ❖ Sidewalk/ADA Improvements
  - ❖ Pedestrian Enhancements
  - ❖ Accommodates multimodal transportation options

## PROJECT DETAILS

- MPO Mobility Phase 3 Project
- Classified as an Urban Major Collector
- Designated as a Complete Streets Corridor (City Masterplan)
- Posted Speeds = 40mph & 35 mph
- Project Length = 2.10 (approximate)
- Bridge #860233 over I-95
- 2 Railroad crossings (SFRTA & FEC)
- 5 Signalized Intersections



# UNDERSTANDING OF THE SCOPE OF SERVICES

## PROJECT SCOPE

- Roadway Widening/Milling & Resurfacing
- Drainage Improvements
- Lighting
- Signalization (5 Intersections)
- Survey
- Community Outreach
- Traffic Studies (Additional Services)
- Landscaping (Additional Services)

## DESIGN STANDARDS

- Florida Greenbook
- City of Pompano Beach Complete Streets Manual
- FDOT Design Manual
- FDOT Standard Plans Index
- Manual on Uniform Traffic Control Devices (MUTCD)

The collage includes the following documents:

- Florida Department of Transportation Manual of Uniform Minimum Standards for Design, Construction and Maintenance for Streets and Highways (Florida Greenbook)**
- City of Pompano Beach Complete Streets Design Manual**
- Manual on Uniform Traffic Control Devices (MUTCD) 2009 Edition**
- FDOT Design Manual**

Below the documents is a screenshot of the FDOT Standard Plans website:

**Office of Design**  
 Office of Design / Standard Plans  
**Standard Plans for Road and Bridge Construction**

**Standard Plans**

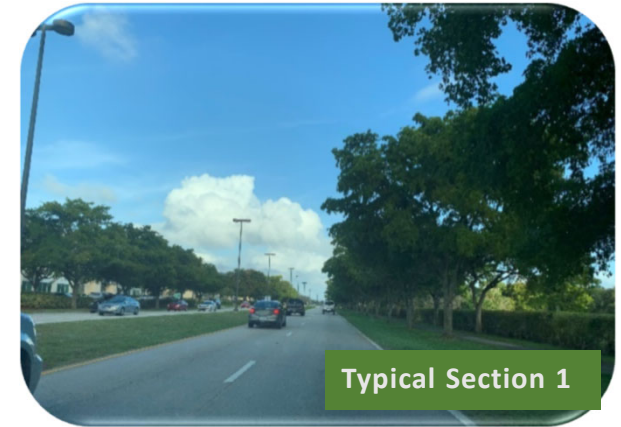
- Standard Plans for Road and Bridge Construction
- Developmental Standard Plans
- Design Standards**
- Design Standards (FY 2017-18 and earlier)
- Developmental Design Standards

## PROJECT ISSUES – PROJECT APPROACH

### FOUR EXISTING TYPICAL SECTIONS

#### ➤ TYPICAL SECTION 1 – FROM POWERLINE RD. TO SFRTA RR CROSSING

- 4-12' lane divided section
- 35' sodded median
- 106'-119' R/W with varying width easements
- Grass swales
- Decorative light poles
- Posted speed 40 mph
- Sidewalks on both sides
- ***City of Pompano Beach's Community Bus System (Red Route) operates along Pompano Park Place at the east end of the project limits***
- Street typology classifications (City GIS Map & Masterplan)
  - ❖ Commercial Avenue – Powerline Rd to SW 15th Ave
  - ❖ Industrial Thoroughfare – from SW 15th Avenue to SFRTA RR Crossing
- Live! Resorts Pompano Redevelopment at the intersection of Powerline Rd. and SW 3rd St
  - ❖ Extensive internal pedestrian and bicycle network
  - ❖ Provides connectivity to SW 3rd St.
  - ❖ Full buildout anticipated in 2029



Live! Resorts Pompano  
Pompano Beach, Florida



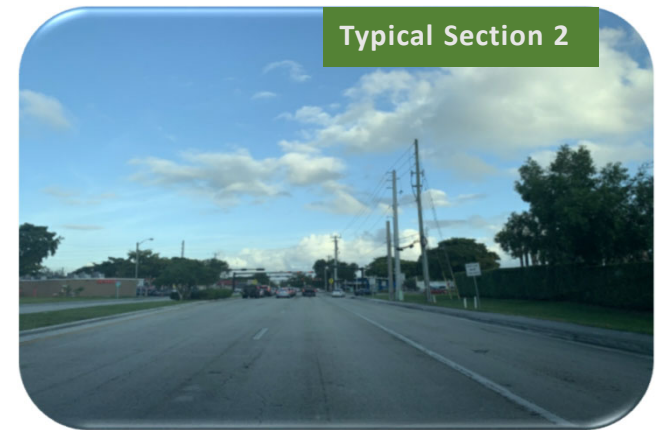
### FOUR EXISTING TYPICAL SECTIONS

#### ➤ TYPICAL SECTION 2 – SFRTA RR CROSSING TO S. ANDREWS AVENUE

- 5-11' lane undivided section with 80' to 93' R/W
- Posted Speed = 40mph
- Type F Curb and Gutter
- Grass utility strips and sidewalks on both sides
- Mainly commercial
- Street typology classification (City GIS Map & Masterplan)
  - ❖ Industrial Thoroughfare

#### ➤ TYPICAL SECTION 3 – FROM S. ANDREWS AVENUE TO DIXIE HWY.

- 6-12' lane divided with a raised 18' grassed median with 100' R/W
- Posted Speed = 40mph
- Type F Curb and Gutter and sidewalks on both sides.
- Mix residential and commercial properties
- Street typology classification (City GIS Map & Masterplan)
  - ❖ Industrial Thoroughfare – S. Andrews Ave. to I-95
  - ❖ Residential Blvd. – from I-95 to N. Dixie Hwy.



### FOUR EXISTING TYPICAL SECTIONS

#### ➤ TYPICAL SECTION 4 – FROM S. DIXIE HWY. TO S. CYPRESS

- 4-12' lane divided with a raised grassed median (15.5' to 25')
- **Posted Speed = 35mph**
- 106' R/W
- Type F Curb and Gutter and sidewalks on both sides.
- Broward County Transit Route 60 -from West Dixie Hwy. to S. Cypress
- Commercial properties
- Street typology classification (City GIS Map & Masterplan)
  - ❖ Commercial Avenue – N. Dixie Hwy to S. Cypress Rd.



# PROJECT ISSUES – PROJECT APPROACH

## APPROACH TO KEY TRAFFIC ISSUES

➤ Standards according to the City’s Complete Streets Masterplan

	Commercial Ave.	Residential Blvd.	Industrial Thoroughfare
Max. Posted Speed	30 mph	35 mph	35 mph
Lane Width	10' - 12'	10'-11'	11'-12'
Min. Sidewalk Width	6'	6'	5'

➤ Conducted a Preliminary Analysis for “Overall Vision” (2 Options)

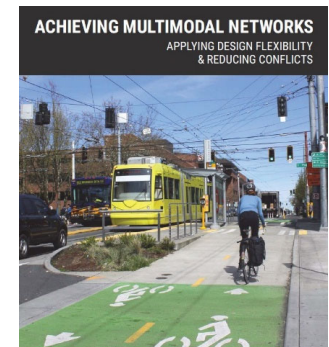
- Conduct a Lane Reduction Study
- Conduct a Speed Study
  - ❖ Investigate the possibility of reducing the PS to 35mph further; this concept was recommended by the Broward MPO
  - ❖ **FHWA USLIMITS recommends using speed limits closer to 50th Percentile for roadway segments with high pedestrian and bicyclist traffic**
  - ❖ Corridor would benefit from a speed reduction to attract all Multimodal networks and protect the most vulnerable users
  - ❖ Would provide cohesiveness with future Live! Pompano Resorts internal pedestrian/bicycle network

### KEY DESIGN FLEXIBILITY

The 2011 AASHTO Green Book provides flexibility when it comes to selecting appropriate design speeds given the context of a particular roadway:

*“Design speed should be a logical one with respect to the anticipated operating speed, topography, the adjacent land use, and the functional classification of the highway. In selection of design speed every effort should be made to attain a desired combination of safety, mobility, and efficiency within the constraints of environmental quality, economics, aesthetics, and social or political impacts”*

AASHTO Green Book 2011, p. 2-54



THE CORRADINO GROUP

# PROJECT ISSUES – PROJECT APPROACH

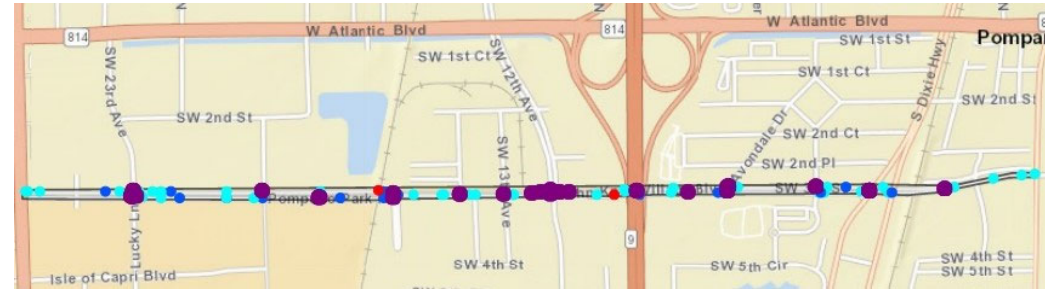
## DUE DILIGENCE OF KEY TRAFFIC ISSUES

### SAFETY REVIEW

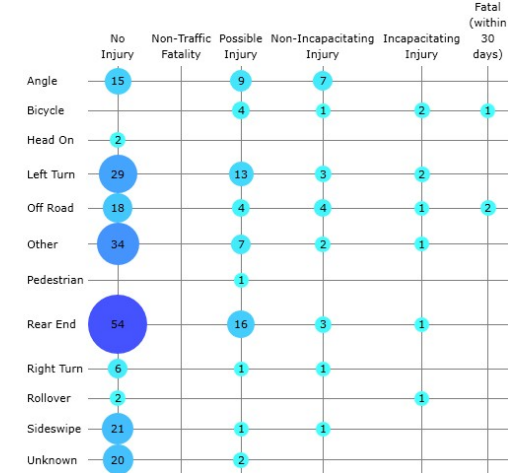
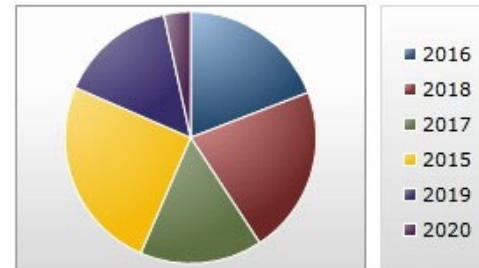
- Completed 5 Year Crash History- Signal Four Analytics Network Screening
  - Rear End Crashes and Left Turn/Angle Crashes are Predominant crash pattern
  - 9 Bicycle and Pedestrian Crashes- 8 Injuries and 1 Fatality
  - High Crash Locations at Andrews Avenue and SW 23<sup>rd</sup> Avenue intersections

### TRAFFIC OPERATIONS LINK ANALYSIS

- Researched Broward MPO Roadways Capacity and Level of Service Analysis 2017 & 2040
  - The FDOT LOS Handbook- Class II Urban Facility
    - 4 Lane LOS D Capacity- 32,400 vehicles
    - 6 Lane LOS D Capacity- 50,000 vehicles



Year



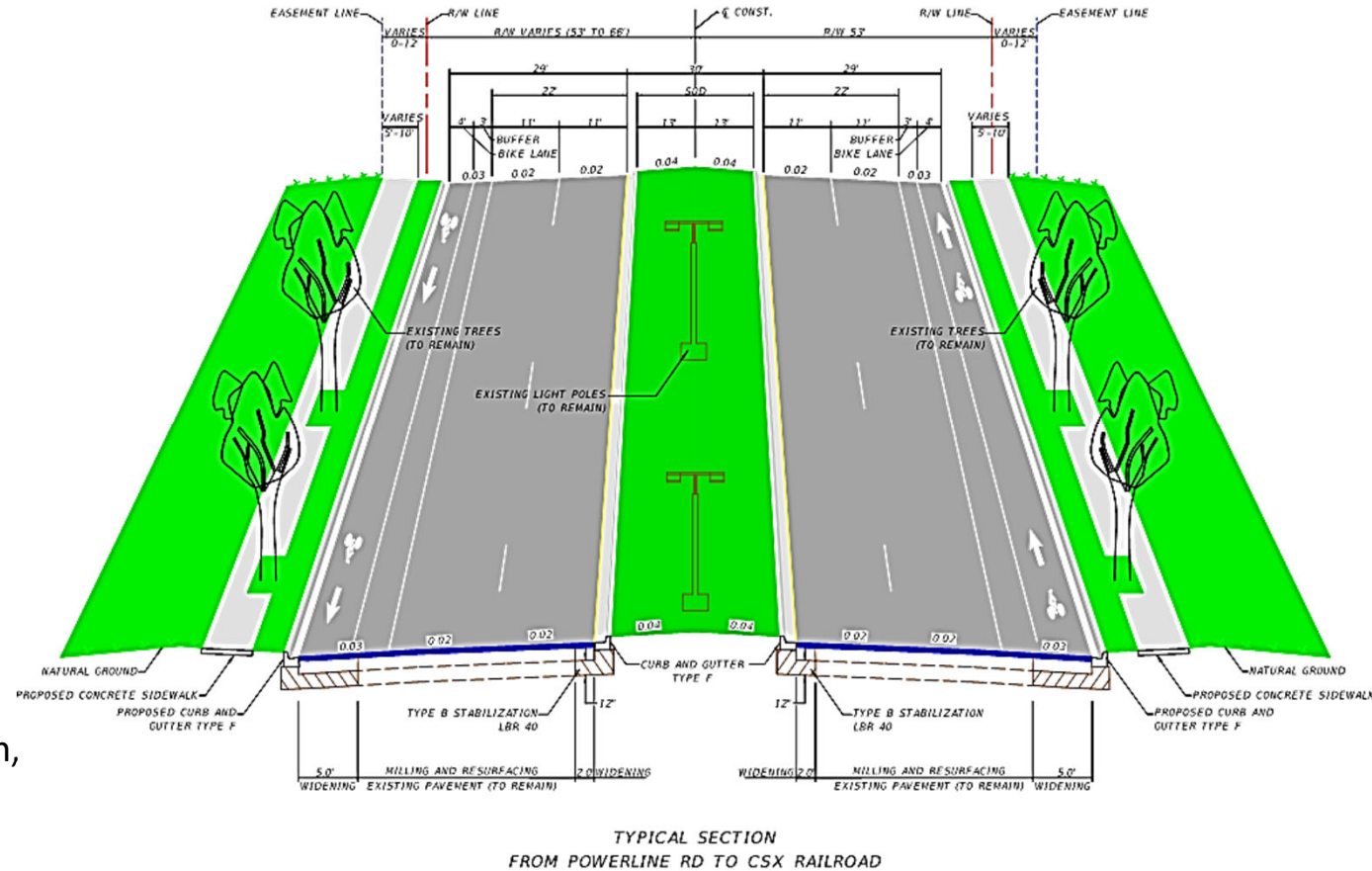
APPENDIX B: East / West Roadways Capacity and Level of Service Analysis 2017 & 2040

ID	E/W Roadway	Segment	2017				2017				2040				2040					
			Design Code	Daily Conditions			Design Code	Peak Hour Conditions			Design Code	Daily Conditions			Design Code	Peak Hour Conditions				
				AADT	Capacity	V/C		LOS	Volume	Capacity		V/C	LOS	Volume		Capacity	V/C	LOS	Volume	Capacity
734	Pompano Pk Pl	E. of Powerline Rd	474	13600	35820	0.38	C	1292	3222	0.40	C	474	26100	35820	0.73	C	2480	3222	0.77	C
736	Pompano Pk Pl	E. of Andrews Ave	674	13500	53910	0.25	C	1283	4851	0.26	C	674	40500	53910	0.75	C	3848	4851	0.79	C
738	Pompano Pk Pl	E. of Dixie Hwy	464	8000	29160	0.27	C	760	2628	0.29	C	464	34100	29160	1.17	F	3240	2628	1.23	F

## PROPOSED TYPICAL SECTIONS

### ➤ TYPICAL SECTION 1 – FROM POWERLINE RD. TO SFRTA RR CROSSING

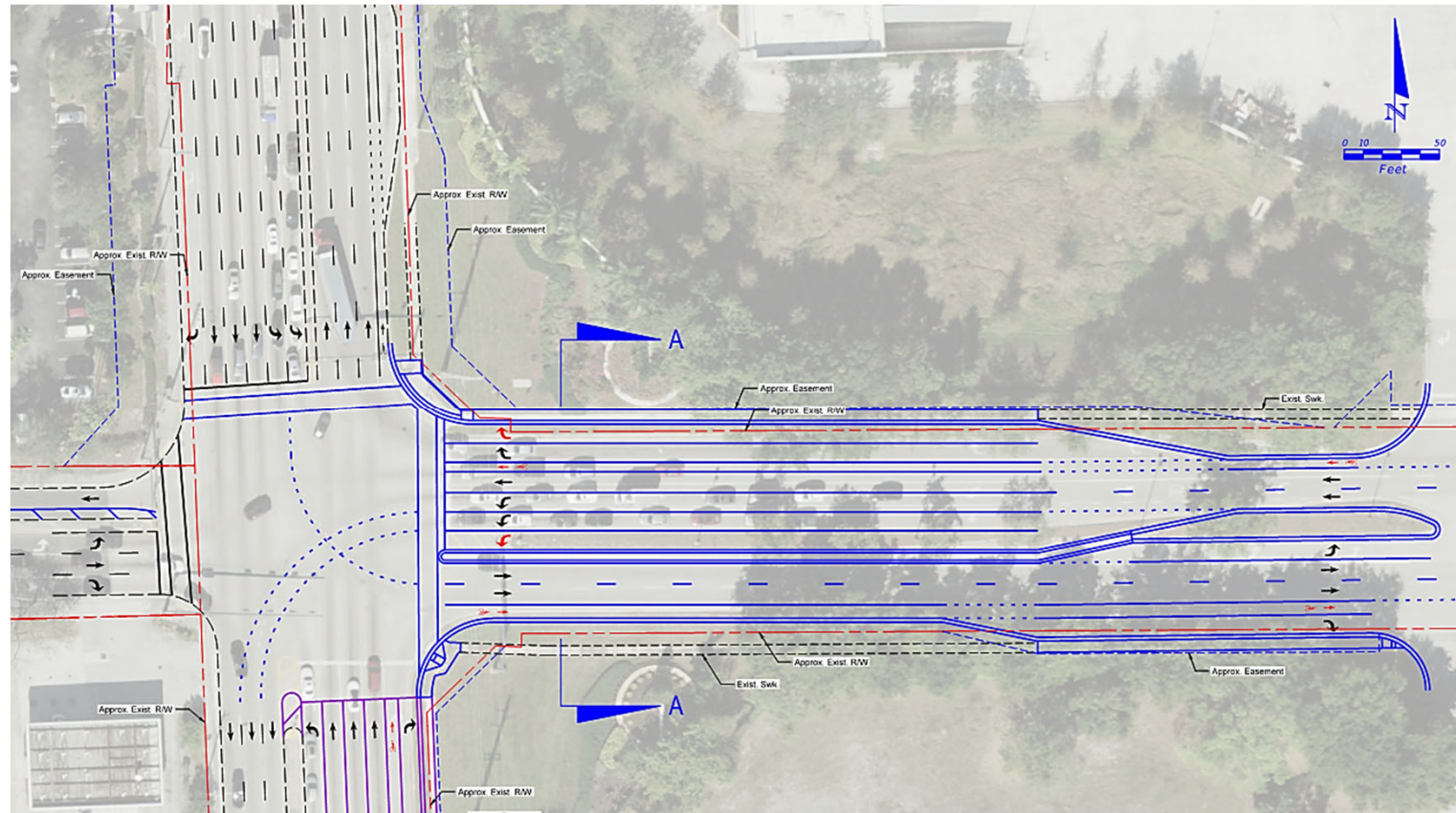
- Consists of 4-11' lanes
- 30' raised grass median
- 7' buffered bike lanes
- 5'-10' sidewalks.
- ❖ Requires 2' widening on the median and 5' on the outside lanes (both sides).
- ❖ The existing light poles would remain
- ❖ Lighting analysis would be required.
- ❖ Viable without speed reduction, however, would benefit from reducing speed to 35mph



# PROJECT ISSUES – PROJECT APPROACH

## PROPOSED TYPICAL SECTIONS

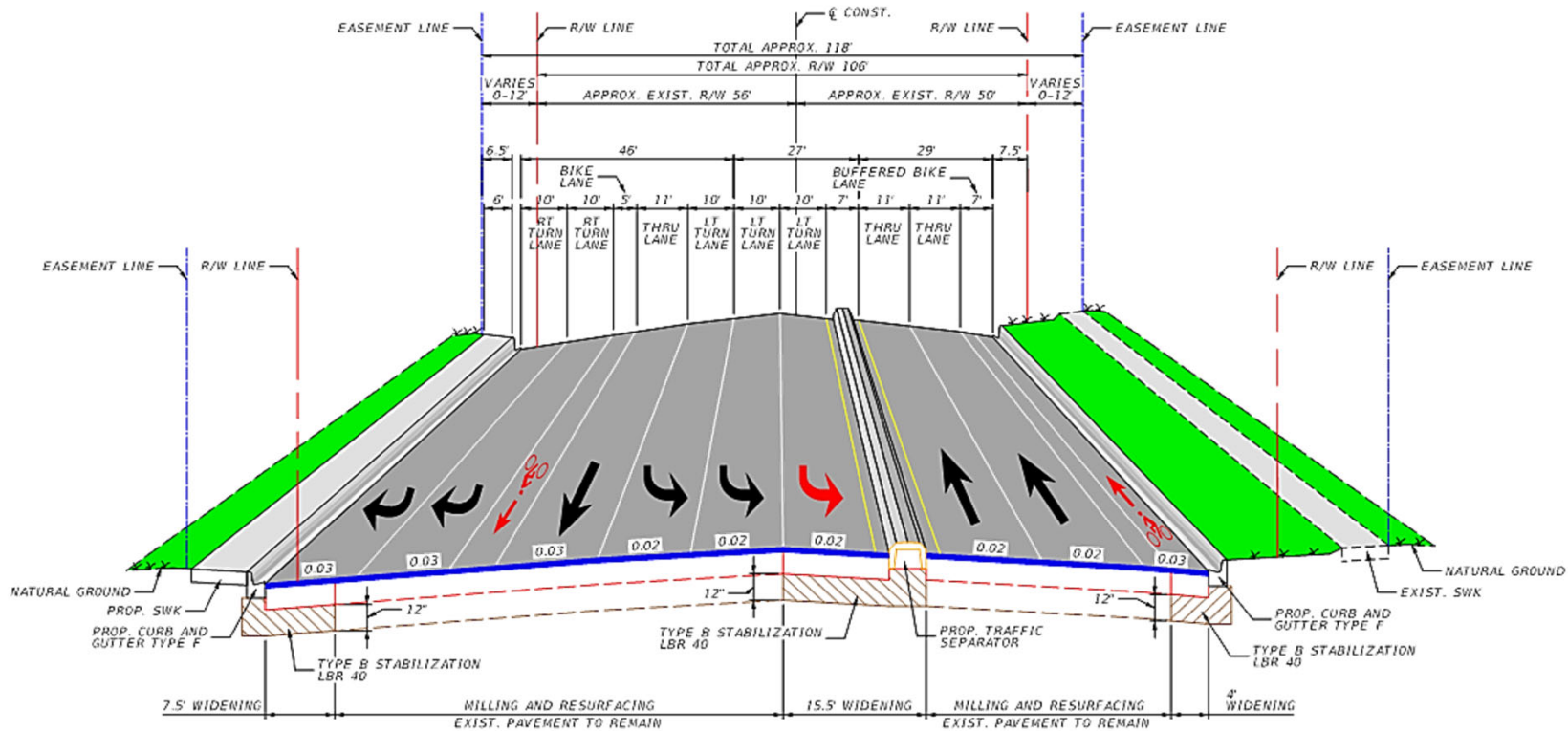
- **COORDINATION WITH CITY OF POMPANO BEACH AND PROPOSED LIVE! POMPANO RESORTS**
- TRAFFIC MITIGATIONS IMPROVEMENTS**



# PROJECT ISSUES – PROJECT APPROACH

## PROPOSED TYPICAL SECTIONS

- COORDINATION WITH CITY OF POMPANO BEACH AND PROPOSED LIVE! POMPANO RESORTS TRAFFIC MITIGATIONS IMPROVEMENTS (SECTION A-A)



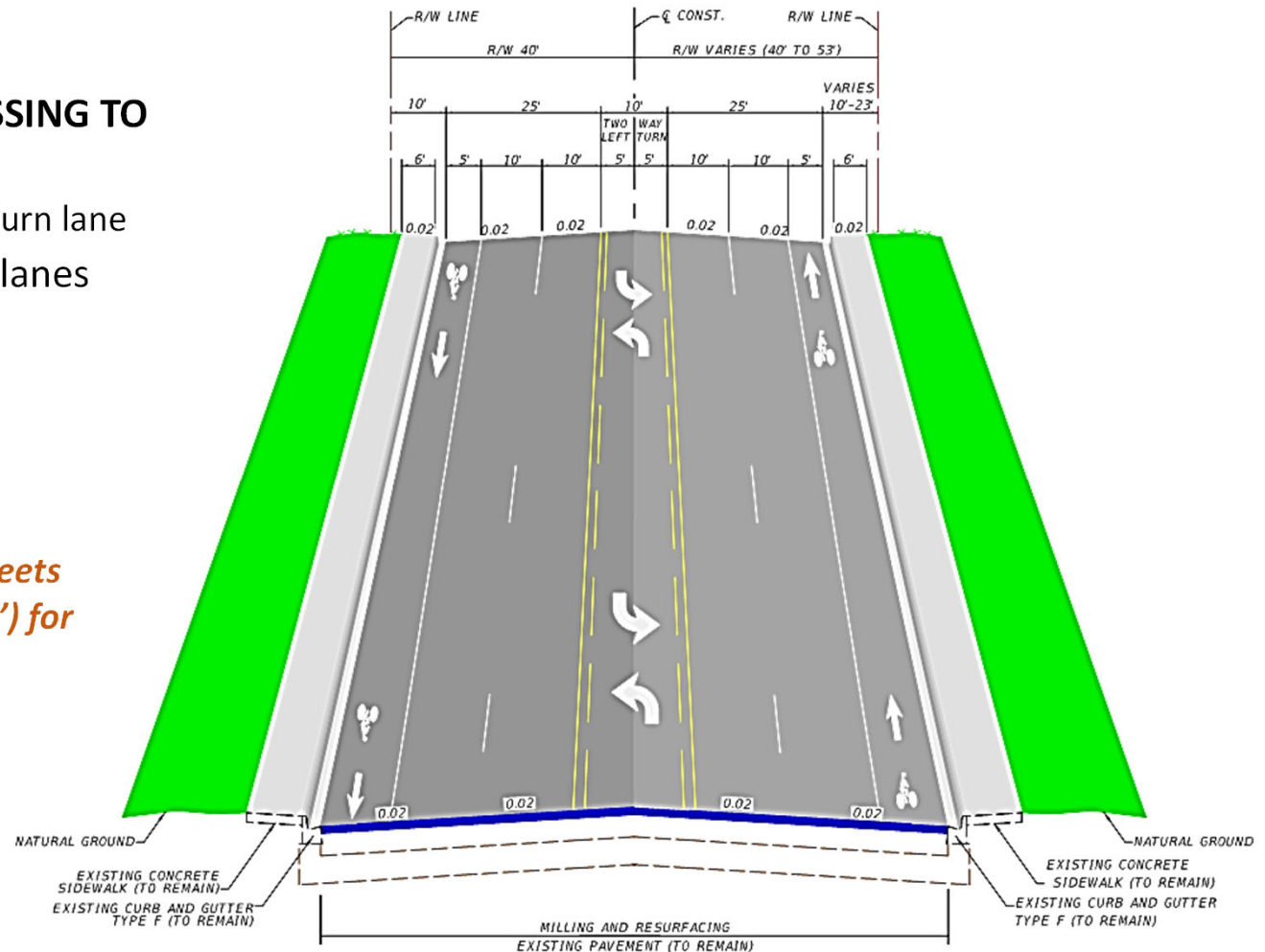
Pompano Park Place/Powerline Rd  
Section A-A  
Looking East

## PROJECT ISSUES – PROJECT APPROACH

### PROPOSED TYPICAL SECTIONS

#### ➤ TYPICAL SECTION 2 –SFRTA RR CROSSING TO S. ANDREWS AVENUE (OPTION 1)

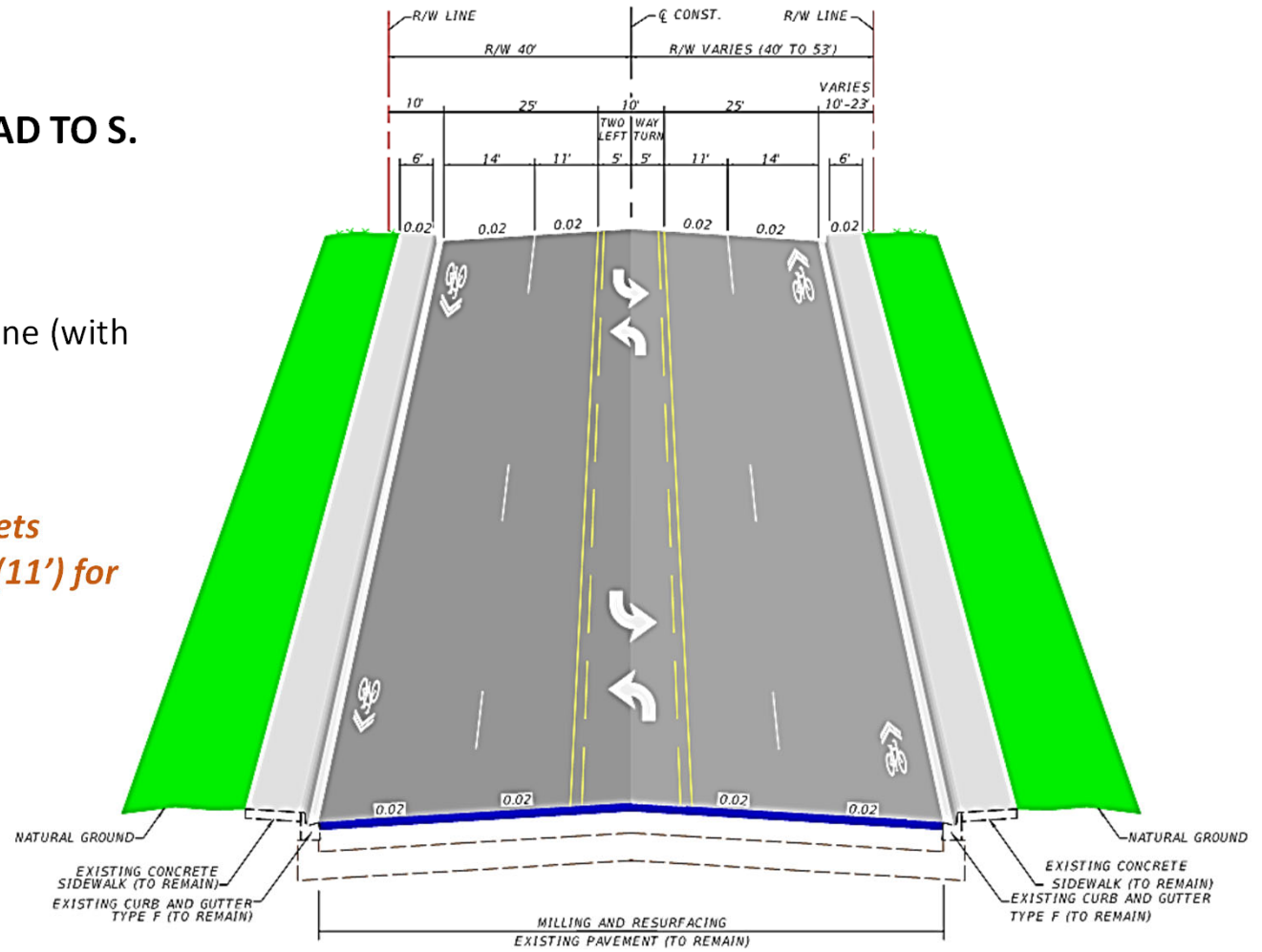
- Consists of 4-10' lanes and 1-10' left turn lane
- Design Exception required for 10' lanes (MUTCD Table 3-10)
- 5' bike lanes
- Existing sidewalks to remain
- *Does not accommodate for future implementation of future bus routes*
- *Not in compliance with Complete Streets Masterplan minimum lane width (11') for Industrial Thoroughfare*



## PROPOSED TYPICAL SECTIONS

### ➤ TYPICAL SECTION 2 – CSX RAILROAD TO S. ANDREWS AVENUE (OPTION 2)

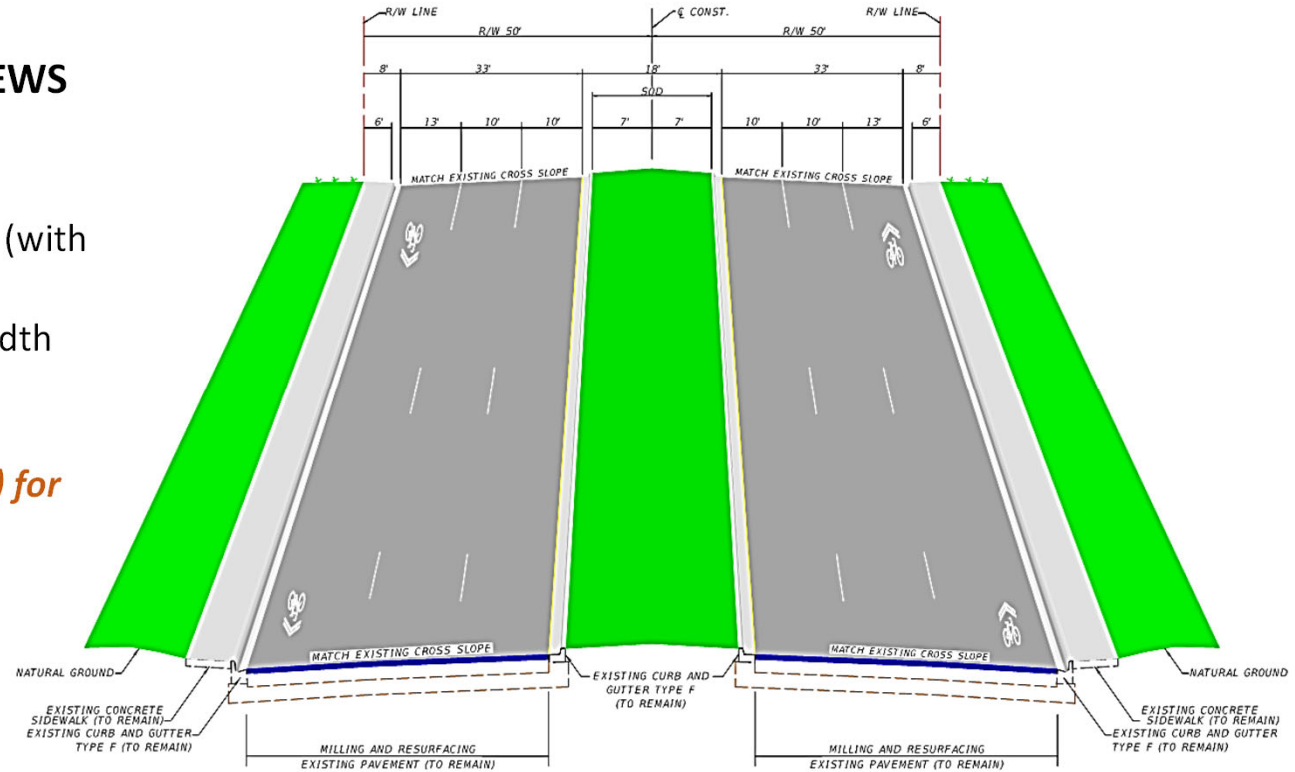
- 35mph posted speed
- Requires Speed Study
- 1-11' inside lane & 1-14' outside lane (with sharrows) in both directions
- 10' turn lane
- Existing sidewalks to remain
- *In compliance with Complete Streets Masterplan minimum lane width (11') for Industrial Thoroughfare*



## PROPOSED TYPICAL SECTIONS

### ➤ TYPICAL SECTION 3 –FROM S. ANDREWS AVENUE TO DIXIE HWY (OPTION 1)

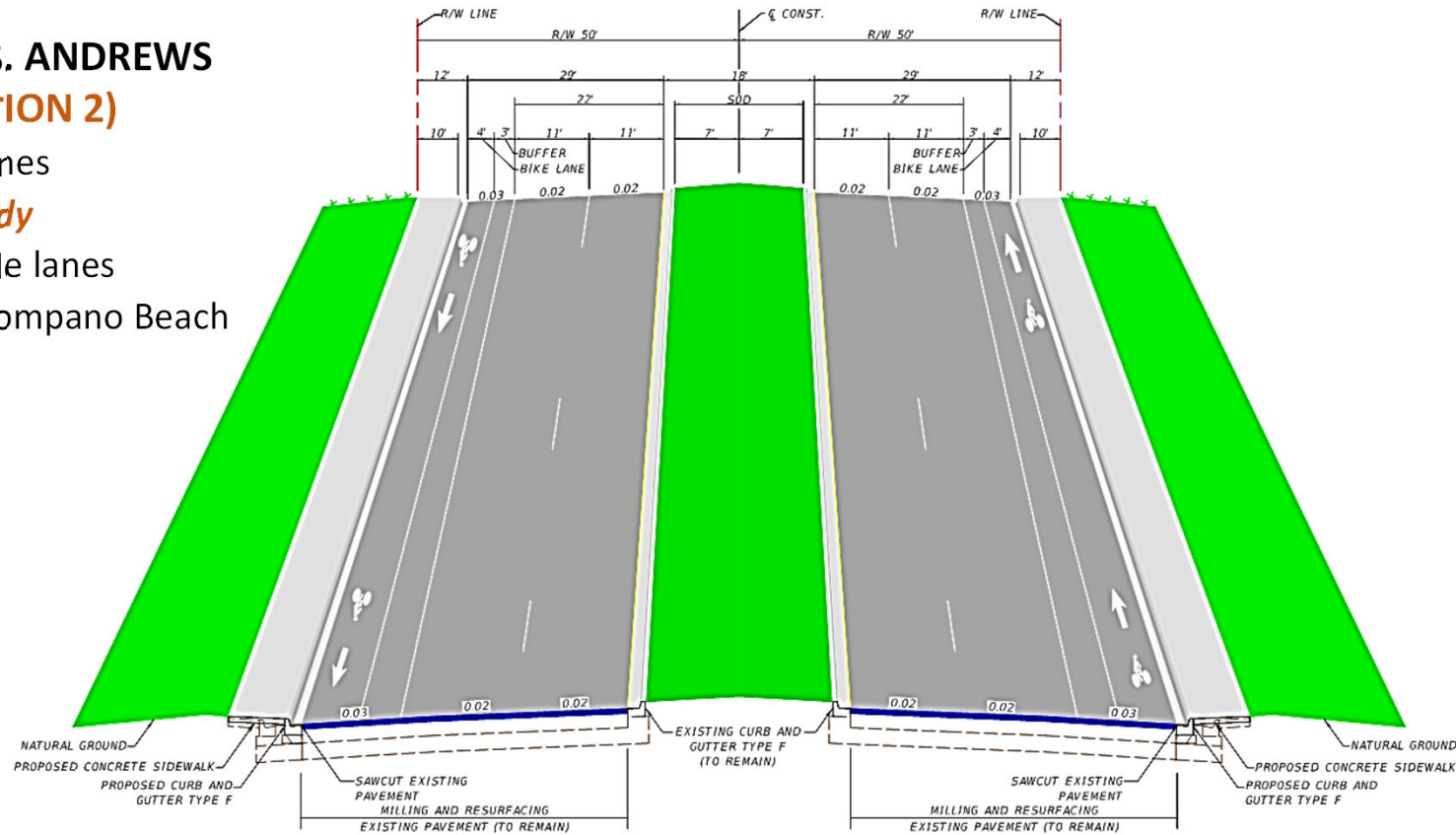
- **Reduction to 35 mph posted speed**
- 2-10' inside lanes & 1-13' outside lane (with sharrows) in both directions
- Requires Design Exception for Lane Width (MUTCD Table 3-10)
- **In compliance with Complete Streets Masterplan minimum lane width (10') for Industrial/ Residential Thoroughfare**
- Existing raised 18' median to remain
- Existing sidewalks to remain



## PROPOSED TYPICAL SECTIONS

### ➤ TYPICAL SECTION 3 –FROM S. ANDREWS AVENUE TO DIXIE HWY. (OPTION 2)

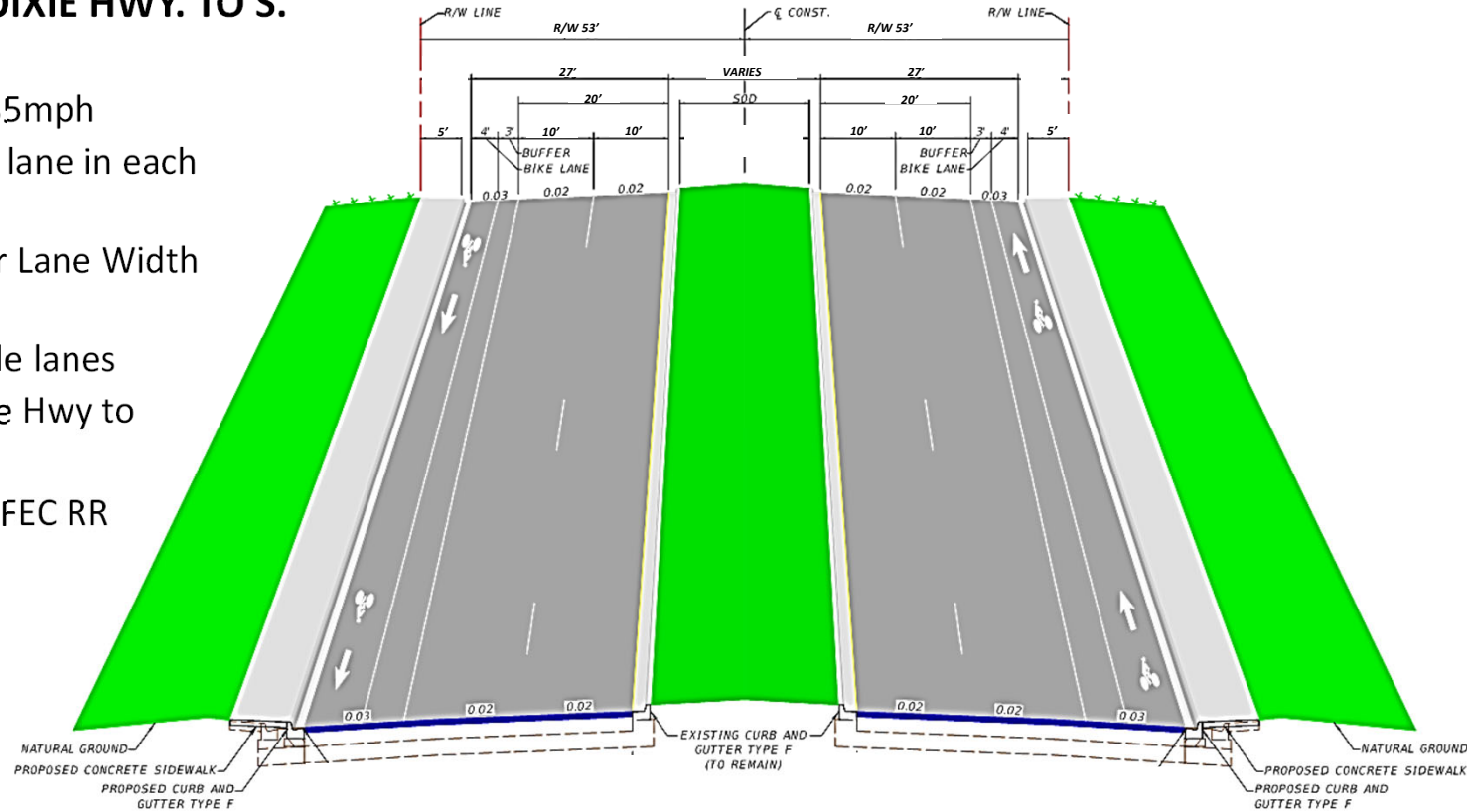
- Lane reduction from 6 to 4 lanes
- *Requires Lane Reduction Study*
- Provision of 7' buffered bicycle lanes
- Coordinate with the City of Pompano Beach and Broward County



## PROPOSED TYPICAL SECTIONS

### ➤ TYPICAL SECTION 4 –FROM DIXIE HWY. TO S. CYPRESS RD.

- Posted Speed to remain at 35mph
- 1-10' inside and 1-11' outside lane in each direction
- Requires Design Exception for Lane Width (MUTCD Table 3-10)
- Provision of 7' buffered bicycle lanes
- Widen into median from Dixie Hwy to FEC RR Crossing
- Widen towards outside from FEC RR Crossing to S. Cypress Rd.
- Regrade swales



## PROJECT ISSUES – PROJECT APPROACH

### DRAINAGE/ ENVIRONMENTAL/ PERMITTING

#### ➤ 5 Existing Drainage Areas

- **Area 1 (Powerline Rd. to S. Fla. Rail)**
  - ❖ Part of Arvida Pompano Park Business Center
  - ❖ Lakes and French drain system (10.49 Ac.)
  - ❖ **SFWMD Permit No. 06-00941-S**
- **Area 2 (S. Fla. Rail to W. I-95)**
  - ❖ French drain system
  - ❖ Connected to a 54" outfall to Pompano Canal
  - ❖ **SFWMD Permit No. 06-01107-S**
- **Area 3 (W. I-95 to E. of SW 4th Ave.)**
  - ❖ Closed French drain system
  - ❖ Connected to a 36" outfall to Pompano Canal
- **Area 4 (E. of SW 4th Ave. to FEC Railway)**
  - ❖ Closed system
  - ❖ Connected to 48" pipes along Dixie Hwy
- **Area 5 (FEC Railway to S. Cypress Ave.)**
  - ❖ Closed system
  - ❖ Connected to existing lakes S. of the corridor
  - ❖ **SFWMD Permit No. 06-01107-S**



**SOUTH FLORIDA WATER MANAGEMENT DISTRICT**

October 18, 2019

*\* Delivered Via Email*

James K Poole \*  
Florida Department Of Transportation  
3400 W Commercial Boulevard  
Fort Lauderdale, FL 33309

**Subject: I-95 Stirling Rd Widening Improvements - FPID 439170-2-52-01  
Request for Additional Information  
Application No. 191003-1960  
Broward County**

Dear Mr. Poole:

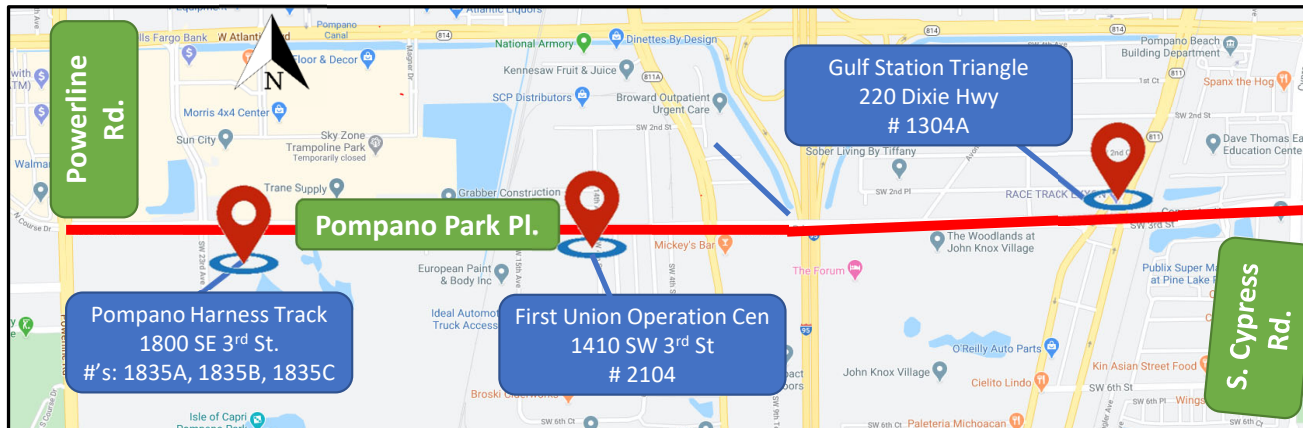
District staff reviewed the above-referenced application. As discussed via e-mail with Carlos Ribbeck on October 18, 2019, the District is requesting the following information, in accordance with Section 5.5.3.1 of the Environmental Resource Permit Applicant's Handbook Volume I (Vol. I), adopted by reference in Section 62.330.010(4)(a), Florida Administrative Code (F.A.C.), to complete the application and provide reasonable assurances for permit issuance:

**THE CORRADINO GROUP**

## PROJECT ISSUES – PROJECT APPROACH

### DRAINAGE/ ENVIRONMENTAL/PERMITTING

- Located within the Pompano Canal Basin and Broward County WCD #4.
- Pompano Canal
  - Impaired body of water & may require a Nutrient analysis (pre vs. post)
  - Determine that improvement do not decrease water quality
- Wet season water table varies from 2.5 to 3.5 feet NAVD
- **A flood routing analysis will be performed per SFWMD ERP Manual**
- **Modification of existing permits needed for drainage modifications**
- **5 contaminated sites**



Permitting through  
SFWMD  
Broward County  
(Water Control D4,  
Env. Protection  
Dept.)  
City of Pompano  
Beach (PW and  
Building Dept)

### SIGNALS

- 5 Signalized Intersections
  - SW 3<sup>rd</sup> St. & Powerline Rd. (Mast arms)
  - **SW 3<sup>rd</sup> St. & SW 23<sup>rd</sup> Ave. (Span Wire)**
    - ❖ Lacks pedestrian features
    - ❖ No marked crosswalks
  - SW 3<sup>rd</sup> St. & SW 12<sup>th</sup> Ave. ( Mast Arms)
  - SW 3<sup>rd</sup> St. & W Dixie Hwy ( Mast Arms)
  - **SW 3<sup>rd</sup> St. & S Cypress Rd. (Span Wire)**
    - ❖ Lacks pedestrian features
    - ❖ Restripe crosswalks
- *Recommend upgrading the 2 span wire signals*

### LIGHTING

- Existing Lighting
  - Decorative lighting in median on Typical 1
  - Cobra head luminaries attached to wood & utility Poles thru rest of project
  - **Per coordination with BC MPO, the City is open to funding decorative lighting that addresses Motorists an pedestrians**
- *Conduct a lighting analysis*
- *Coordinate with the City*
- *Install decorative (dual mast arm) lighting on median On Typical Section 1*
- *Install decorative lighting along R/W for rest of corridor*

### BRIDGE OVER I-95 (#860233)

- **Minor Improvements for safer pedestrian & Cyclist**
  - Bullet railing tapered transitions
  - Upgrade thrie beam connections at bridge ends
  - Addition of sidewalk cover plates at bridge expansion joints

### RAIL COORDINATION

- SFRTA and FEC Rail Coordination
  - Upon NTP to ensure no impact to schedule
  - Required to accommodate roadway widening for buffered bicycle lanes

### MUNICIPAL SURTAX PROJECT COORDINATION

- Pompano Beach Project- POMP-002 (Dixie Highway)
- Pompano Beach POMP-011 (Powerline Road)

### TRAFFIC CONTROL PLANS (TTCP)

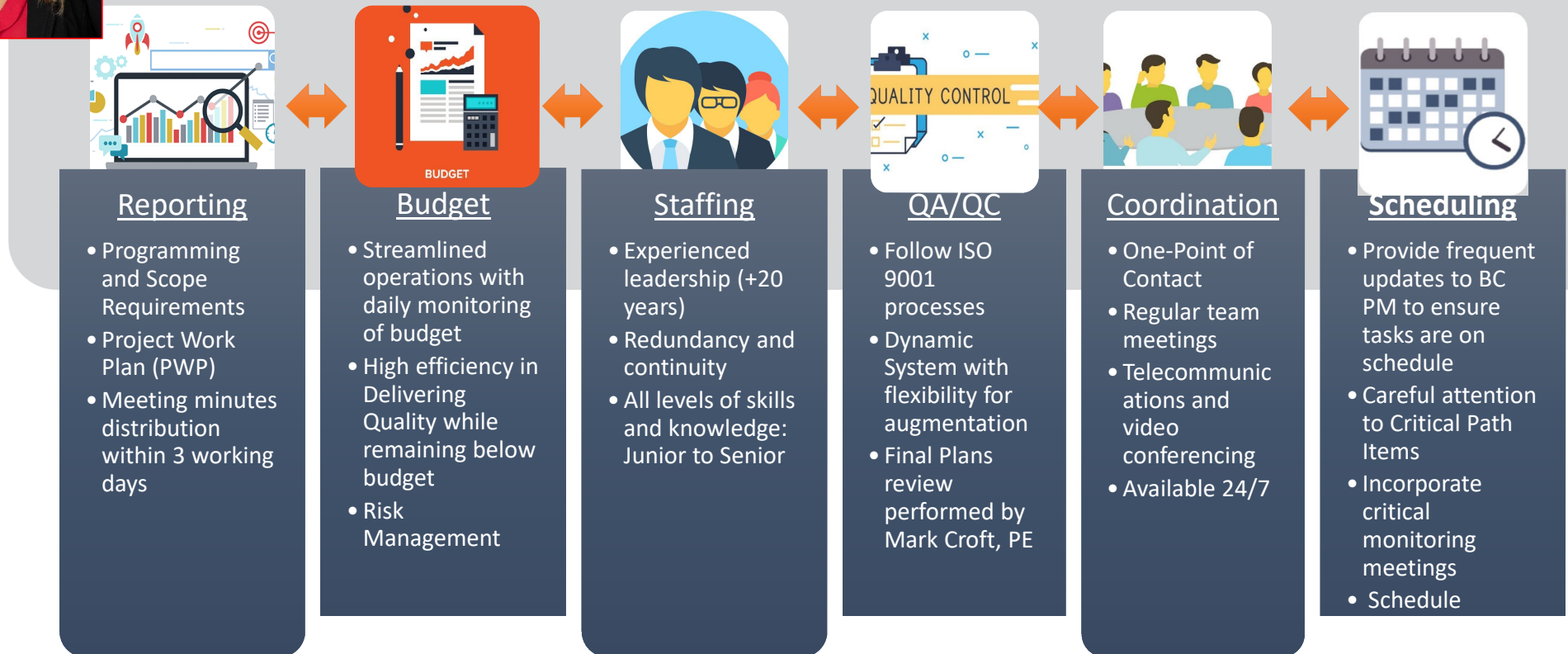
- Temporary Lane Closures required
- Lane closure analysis required to determine time restrictions
- Anticipated construction phases:
  - Widening/Milling and resurfacing of the inside lanes of pedestrian curb ramps, sidewalk activities, signage and pedestrian signal features (daytime only).
  - Intersection Improvements (daytime only).
  - Mill and resurface existing pavement outside lanes as moving operation.
  - Install pavement markings (moving operations) and construct signal improvements.

# Project Management



## Cecilia Villoria, PE- Project Manager

- 26 years of experience in all aspects of Project Management
- Meets Client expectations by completing scope ON TIME and WITHIN BUDGET
- Implements and executes quality in compliance with ISO 9001
- Committed and Ready to Deliver Project



# Risk Management

➤ **Prepare an Action Plan to address:**

- Cost Overruns
- Schedule Delays
- Scope Creep

➤ Identification of risks

➤ Develop risk register matrix for assessment

➤ Prioritization

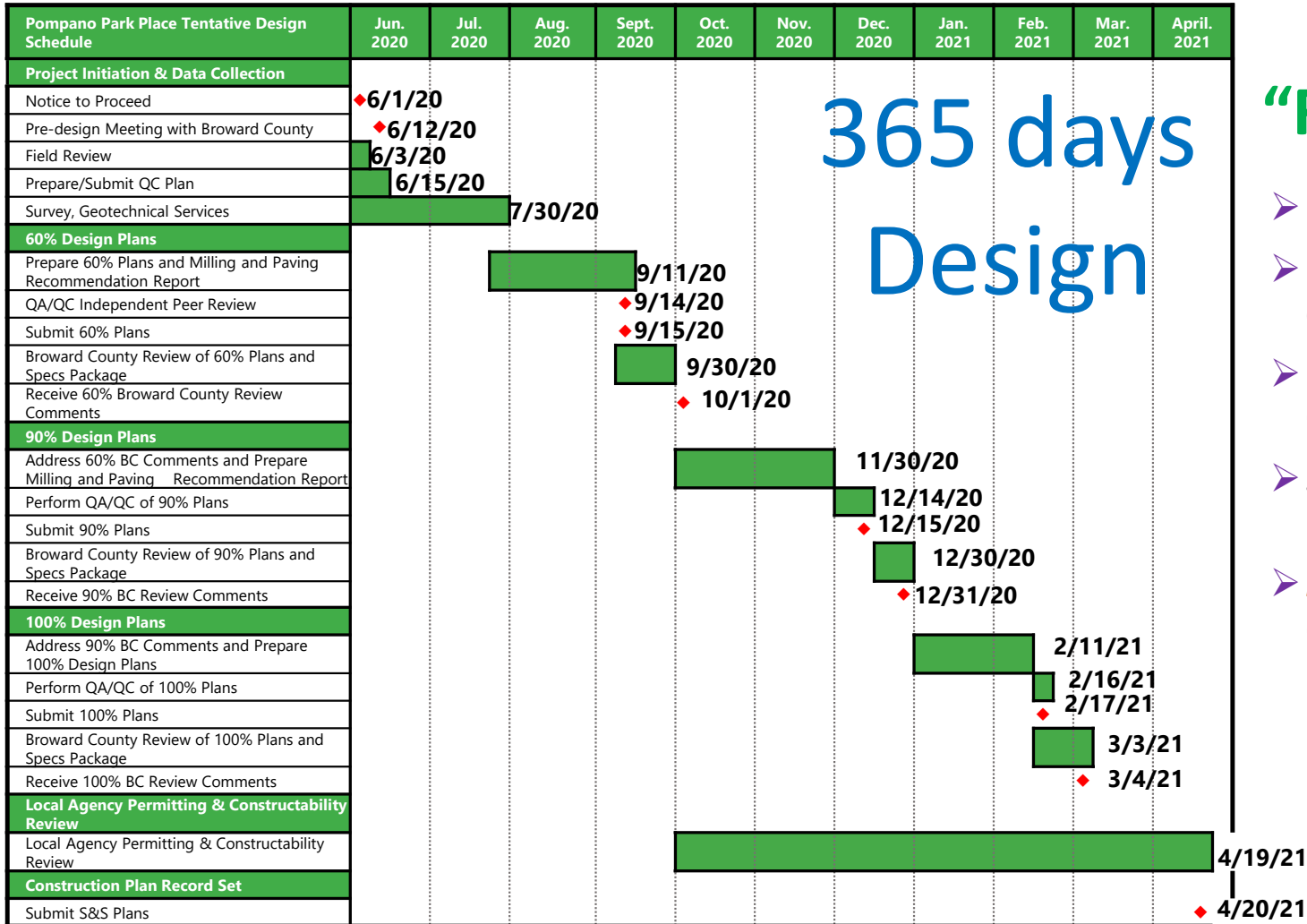
➤ Risk tracking

➤ Mitigation Planning, Implementation, and Monitoring

RISK REGISTER		CONSEQUENCES				
		1-Minor	2-Moderate	3-Significant	4-Major	5-Catastrophic
Likelihood	A- Almost certain to occur in most circumstances	High (H)	High (H)	Extreme (E)	Extreme (E)	Extreme (E)
	B- Likely to occur frequently	Medium (M)	High (H)	High (H)	Extreme (E)	Extreme (E)
	C- Possible and likely to occur at some point	Low (L)	Medium (M)	High (H)	Extreme (E)	Extreme (E)
	D- Unlikely to occur but could happen	Low (L)	Low (L)	Medium (M)	High (H)	Extreme (E)
	E- May occur but only in rare and exceptional circumstances	Low (L)	Low (L)	Medium (M)	High (H)	High (H)



# Schedule



365 days Design

## “FAST TRACK”

- Perform Value Engineering
- Permitting & Utility coordination at NTP
- Phase Review work shops with City/ Stakeholders
- Strategic Public Involvement Process
- *Meet with Commissioners and City Manager upon NTP*



# Public Involvement **Plan**

## MANAGING EXPECTATIONS begins **DAY ONE**

### PHASE 1 – Encourage Stakeholder Input



#### **IDENTIFY** Stakeholders & Ambassadors

Broward County  
City of Pompano Beach  
Live! Resorts Pompano  
Businesses  
Residents  
Palm Aire HOA's  
Community Leaders

### PHASE 2 – Share draft concepts & get feedback



#### **DEVELOP** Custom-Fit Project Messaging

Educate & Inform  
Promote Buy In  
Manage Expectations  
Establish Relationships  
Develop Messaging



#### **ESTABLISH** Tools for Effectively Maintaining Dialogue

Digital and Classic Methods  
Small Group Meetings

#### **Virtual/Online Public Outreach Capabilities**

#### **Transportation Crowdsourcing App**

Distribute information via  
multiple channels

### PHASE 3 – Present final concepts



#### **PROVIDE** Consistent Updates & Personal Outreach

Frequent & Timely  
Updates  
Urgency in Responses  
Accessibility  
Documentation &  
Reporting

# Why the Corradino Team

- Unparalleled experience and performance on other similar contracts
- Extensive project corridor knowledge
- **Planning with Implementation in Mind:** Big picture approach to projects
- Ability to assist the City of Pompano Beach with other agencies, coordination, funding etc.
- **LOCAL TEAM** with established relationships at all levels of governments
- Extensive experience crafting solutions with FDOT and local communities on local projects
- Our team has proven experience working together
- **ASSISTING MANY CITIES ACROSS THE NATION IN THE PLANNING, DESIGN AND IMPLEMENTATION OF COMPLETE STREETS PROJECTS**

Miami Beach | Oakland Park | Key Biscayne | Virginia Gardens  
South Miami | Palmetto Bay | Cutler Bay | Homestead | Hallandale Beach  
Fort Lauderdale | Hialeah | Miami | TDOT | INDOT | Louisville Metro | City of Memphis | Elkhart, IN

Q&A