

PNC2120437P1 | PROFESSIONAL CONSULTANT SERVICES FOR

# **FLL AND HWO AIRPORTS, BUILDING PROJECTS**



July 14, 2021

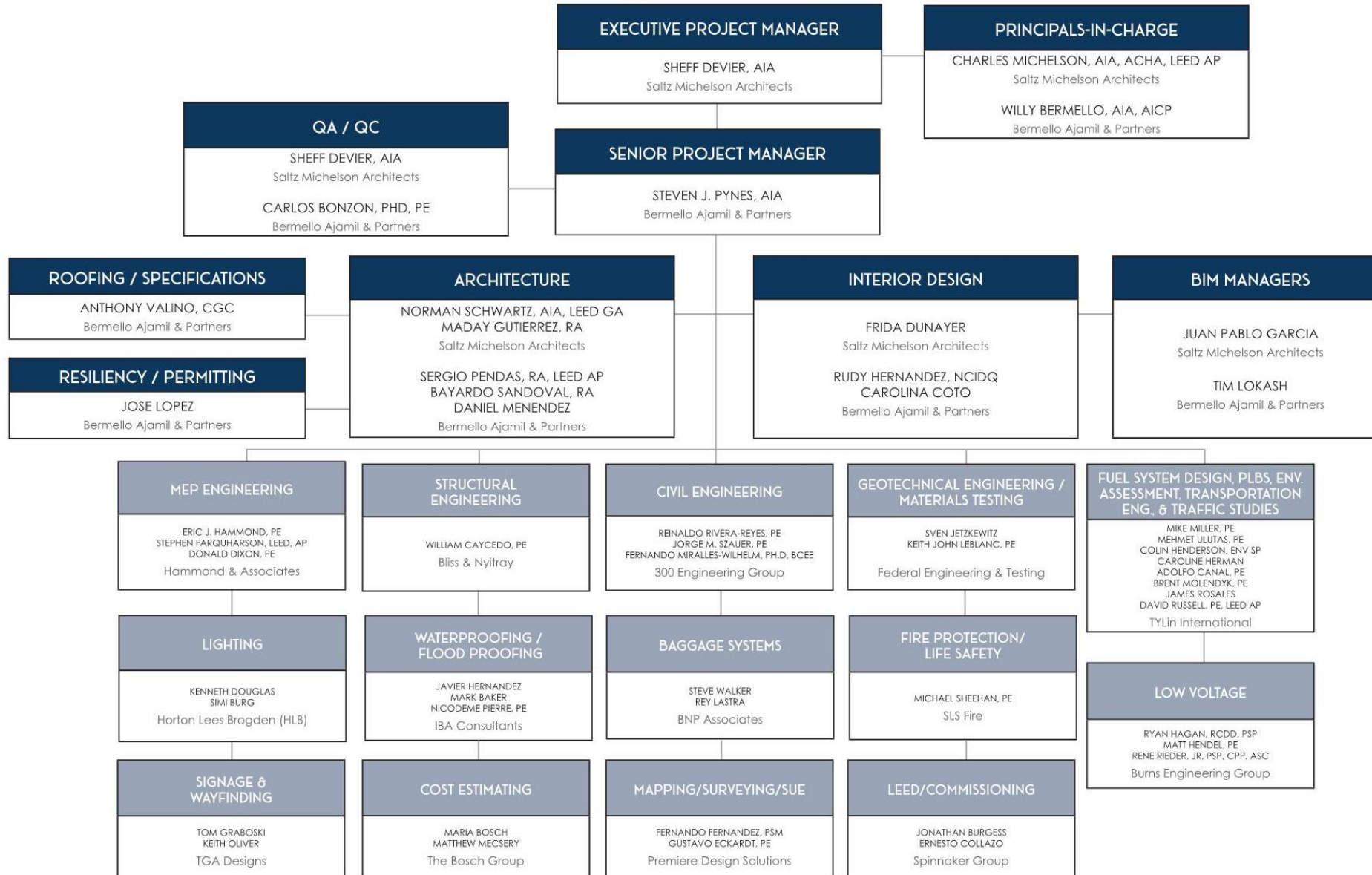


## THE SMA TEAM

THE STRONGEST TEAM OF BROWARD COUNTY  
PROFESSIONALS SUPPORTED BY PROVEN  
EXPERTS IN EVERY FACET OF AIRPORT DESIGN  
AND DEVELOPMENT



# THE SMA TEAM







SALTZ MICHELSON

Charles Michelson  
Principal



SALTZ  
MICHELSON  
ARCHITECTS







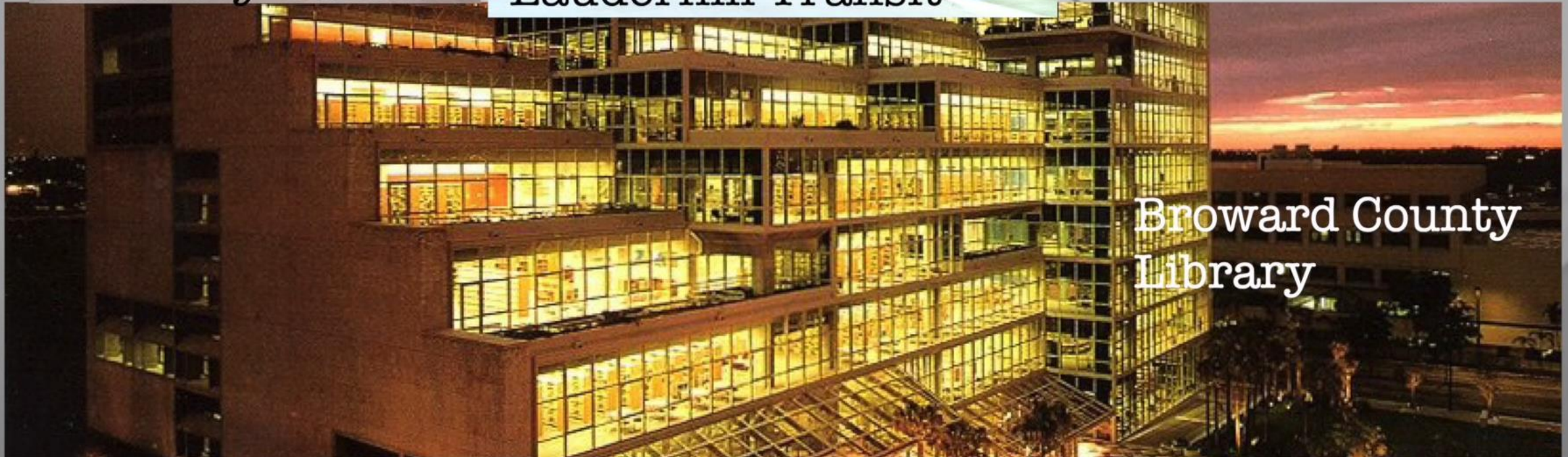
Broward Addiction  
Recovery Center



Lauderhill Transit



Capitol Bank



Broward County  
Library





# THE SMA TEAM

**Willy Bermello**  
Principal







Bermello Ajamil & Partners

**Terminal Renovations & Expansions**

**CVP Installations**

**Baggage Handling Systems**

**Central Parking Garages**

**Maintenance Facilities**

**27 years in Broward County**





# MEP ENGINEERING

☒ BROWARD CBE FIRM



ERIC J. HAMMOND, PE



DONALD DIXON, PE



STEPHEN FARQUHARSON, LEED, AP





WILLIAM CAYCEDO, PE

# STRUCTURAL ENGINEERS



BLISS & NYITRAY, INC.

---

STRUCTURAL  
ENGINEERS

# 300

ENGINEERING GROUP, P.A.

## CIVIL ENGINEERING



FERNANDO MIRALLES-WILHELM, PH.D., BCEE



REINALDO RIVERA-REYES, PE



JORGE M. SZAUDER, PE





## GEOTECHNICAL ENGINEERING MATERIALS TESTING



KEITH JOHN LEBLANC, PE



SVEN JETZKEWITZ



**BROWARD CBE FIRM**



# HLB

## LIGHTING CONSULTANT



KENNETH DOUGLAS



SIMI BURG

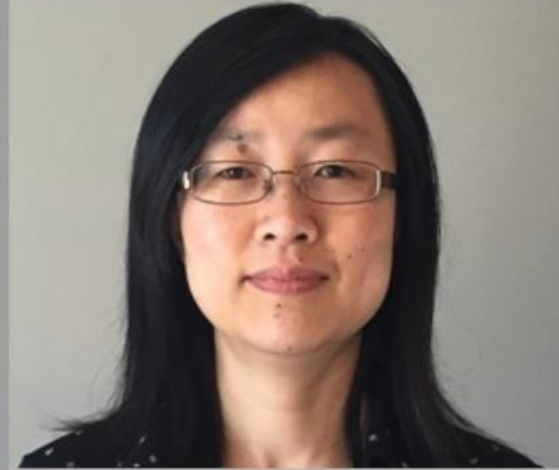




ADOLFO CANAL, PE



MEAGHAN CAPUANO



CHERRY XIONG



CAROLINE HERMAN



COLIN HENDERSON, ENV SP



BRENT MOLENDYK, PE



JAMES ROSALES



# WATERPROOFING FLOOD PROOFING



MARK BAKER



NICODEME PIERRE



JAVIER HERNANDEZ





ASSOCIATES, INC.

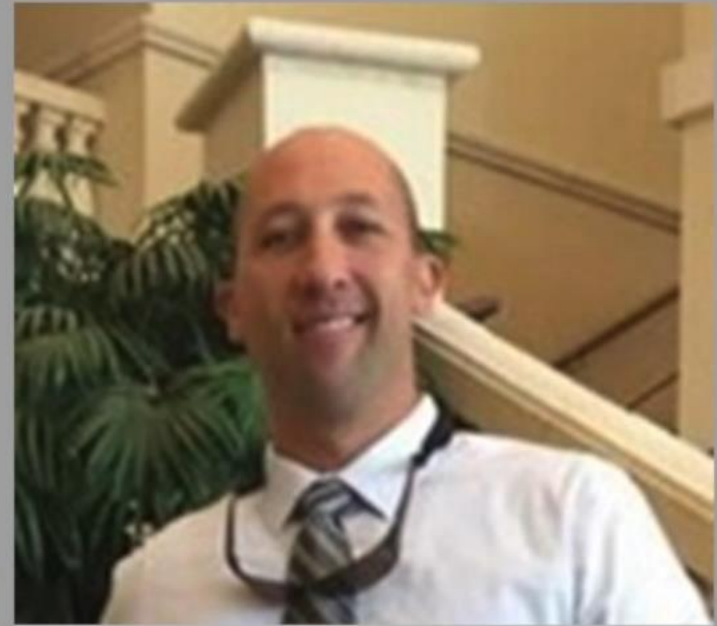
# BAGGAGE SYSTEMS



REY LASTRA



KELLY SCHOLL



STEVE WALKER



# **FIRE PROTECTION LIFE SAFETY**



MICHAEL SHEENAN, PE





# SIGNAGE & WAYFINDING



KEITH OLIVER



TOM GRABOSKI



THE BOSCH GROUP

# COST ESTIMATING



MARIA BOSCH



MATTHEW MECSERY



**BROWARD CBE FIRM**







# MAPPING/SURVEYING/SUE

☒ BROWARD CBE FIRM



FERNANDO FERNANDEZ



GUSTAVO ECKARDT



**SPINNERAKER**  
**GROUP**

# LEED/COMMISSIONING



ERNESTO COLLAZO

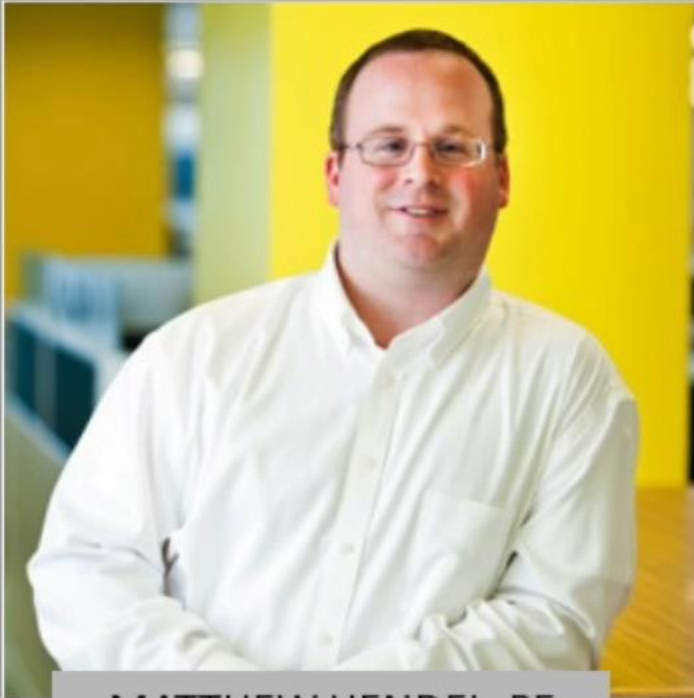


JONATHAN BURGESS



# Burns

## LOW VOLTAGE



MATTHEW HENDEL, PE



SUZANNE GUZIK



RYAN HAGAN, RCDD, PSP



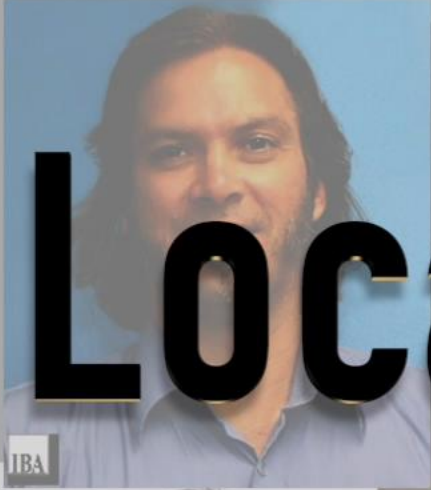
## **1. Ability of Professional Personnel**



**Local**

**Most CBE Certified**

**Nationally Recognized**





- 46 years of experience with Institutional, Governmental Facilities
- Lead Project Manager for Broward County Continuing Contract
- Responsible for the 1st NET Positive
- Facility for Broward County - Lauderdale Transit Center
- Responsible for the 1st BIM Project for Broward County – BARC Facility
- Broward County Main Library Wind Mitigation  
City of Weston Emergency Operations Center

**Sheff Devier**  
Senior Project Manager





- **22 Years of Experience**
- **10 years working directly with Broward County**
- **Broward County Transit Electric Bus Charging Infrastructure Projects**
- **Broward County Addiction Recovery Center (BARC)**

**Maday Gutierrez**  
SMA Project Manager



- **Change Order Management**
- **Due Diligence**
- **Existing Conditions**
- **Conflict Resolution**
- **Code Research**
- **Detailed Plans**



## **2. Project Approach**



FLL

HWO

Steve Pynes  
BA Project Manager



Bermello Ajamil & Partners



- **35 Years of Professional Experience**
- **Over 25 years of airport design experience**
- **Successful management of large, multidisciplinary aviation projects**

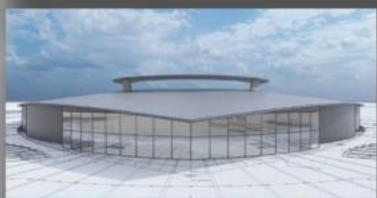


## Steve Pines Sr. Project Manager



- **ORD Master Plan**
- **ORD United Airlines Terminal & Satellite**
- **FLL Terminal Refurbishment**
- **FLL Airfield Improvements & New Concourse**
- **MIA Terminal Optimization Program**
  - **Ticket Counter Refurbishment**
- **MIA Employee Parking Garage – Design Criteria Package**
- **MIA American Airlines D30 Flagship Lounge**
- **MIA E Satellite APM Replacement O&M**
- **MIA Fire Protection Main Master Plan**
- **MIA Rooftop Telecommunication Conduit**
- **MIA B-C Infill Interior Finish-out**
- **MIA American Airlines Tenant Improvements**
- **MIA B-C Infill Building Shell**
- **MIA B-C Infill Demolition & Apron Utilities**
- **MIA Concourse A – Phase II**
- **FPO Passenger Terminal Master Plan**
- **GRU American Airlines Admirals Club, Sao Paulo, Brazil**





### 3. Past Performance



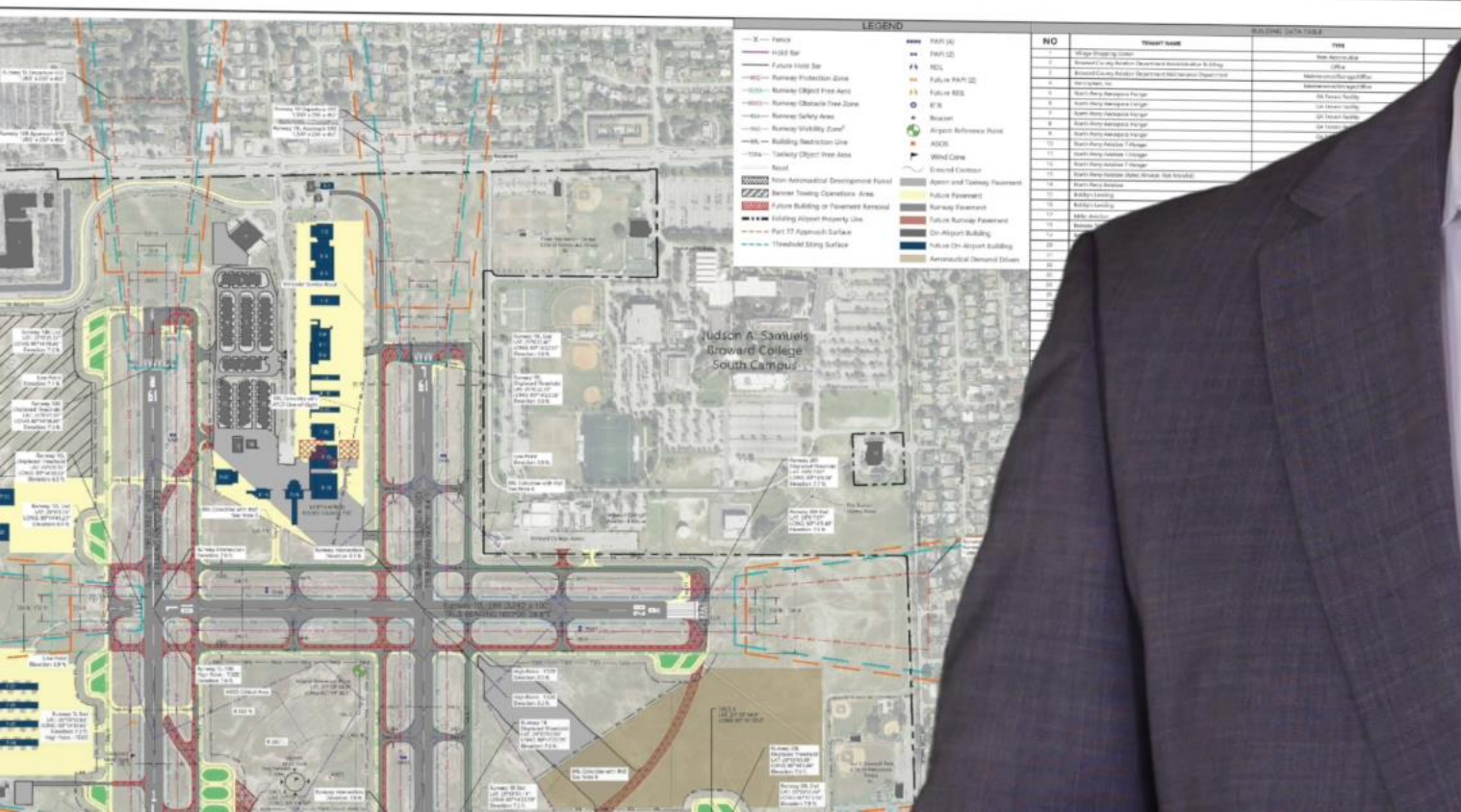


**Parking Garages**  
**Connector Corridors**  
**Bridges**  
**Hangers**  
**APM Track**  
**Maintenance Facilities**  
**Administration Buildings**  
**Customs and Border Control**  
**Utility Plants**

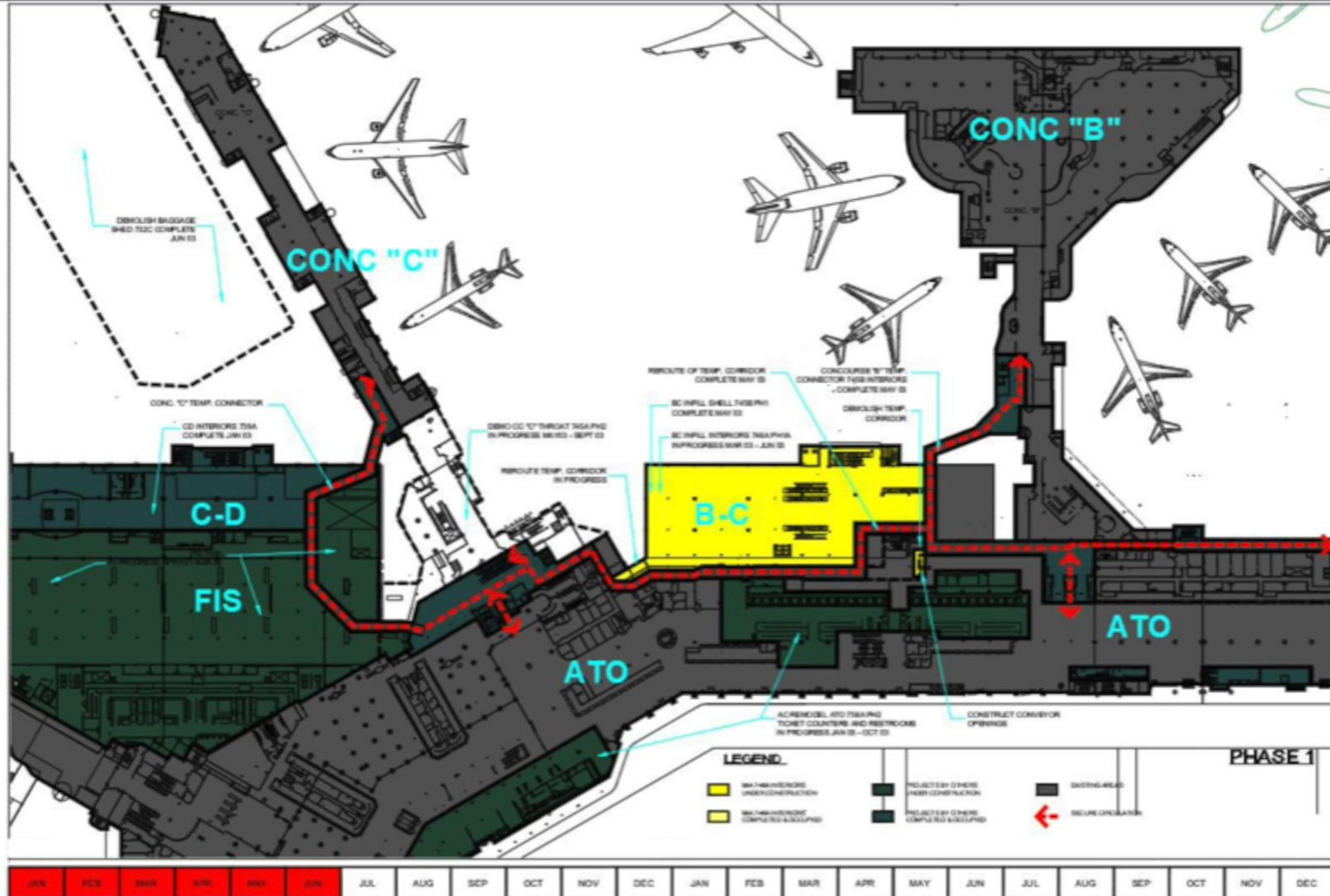


# Phasing

- Passenger Flow
- Aircraft Flow
- Baggage Flow
- Security Flow



# PHASING PLAN





# PROPRIETARY SOFTWARE TO STUDY AND VALIDATE CONDITIONS



SMA final with a...



## WHY CHOOSE THE SMA TEAM:



**Ability of Personnel:  
The Specific Experience to Your Needs**



**Past Performance: Lessons Learned  
from Other Projects**



**Project Approach:  
Proven Procedure to  
Deliver Successful Projects**



**Best Combination of LOCAL  
Talent and International  
Experts to Serve our Community**





MOST EXPERIENCE = LOWEST RISK



Thank you!