

**Professional Consultant Services for**

# **Fort Lauderdale-Hollywood International Airport (FLL)**

**and**

# **North Perry Airport (HWO) Building Projects**



**Submitted to  
Broward County  
Aviation Department**

**July 2021**

**BURNS  MCDONNELL®**



# Presenting Team **Members**



**Shawn  
DeKold**

**Principal-in-Charge**



**Mauricio  
Pizarro**

**Project Manager**



**Judy  
Carty**

**Deputy Project Manager**



# **Why Choose Burns & McDonnell**



**Globally  
Recognized  
Aviation Firm**



**Breadth and  
Depth of  
Aviation Personnel**



**Institutional  
Knowledge of  
Broward County**







Premier Aviation Design Firm

**123**

years in existence | always as Burns & McDonnell

**500+**

aviation professionals | **7,600+** employees

**80+**

years providing aviation services

**1934**

year of first project in Broward County







Premier Aviation Design Firm

**Beeline Fuel Pipeline** Port Everglades to FLL

**1992** PBB layouts

**2000** first check-in kiosks at FLL

**2014** RW 10R-28L NAVAIDS

**New T4** fuel hydrant system

**AA NextGen Tech & Rebrand** Ticket Counters, Gates, GIDS, BSO



# Relevant Qualifications, Licenses and Experience of the Proposed Key Staff Members



**Carty**Architecture



CON·NICO



**WALKER**  
CONSULTANTS



# Agenda

## **1. Ability of Professional Personnel**

**1a. Organizational Chart**

**1b. Relevant Qualifications**

**1c. Project Manager Knowledge  
and Experience**

## **2. Project Approach**

## **3. Past Performance**

**3a. Vendor's Experience on  
Similar Projects**

**3b. Capabilities in CAD/BIM**

**3c. Experience in Permits/  
Licenses/Approvals**

**3d. Experience Providing  
Construction Administration  
Services and Engineering  
Inspections**

## **4. Workload of the Firm**

## **5. Location**

## **6. Willingness to Meet Time and Budget Requirements**

## **7. Volume of Previous Work**



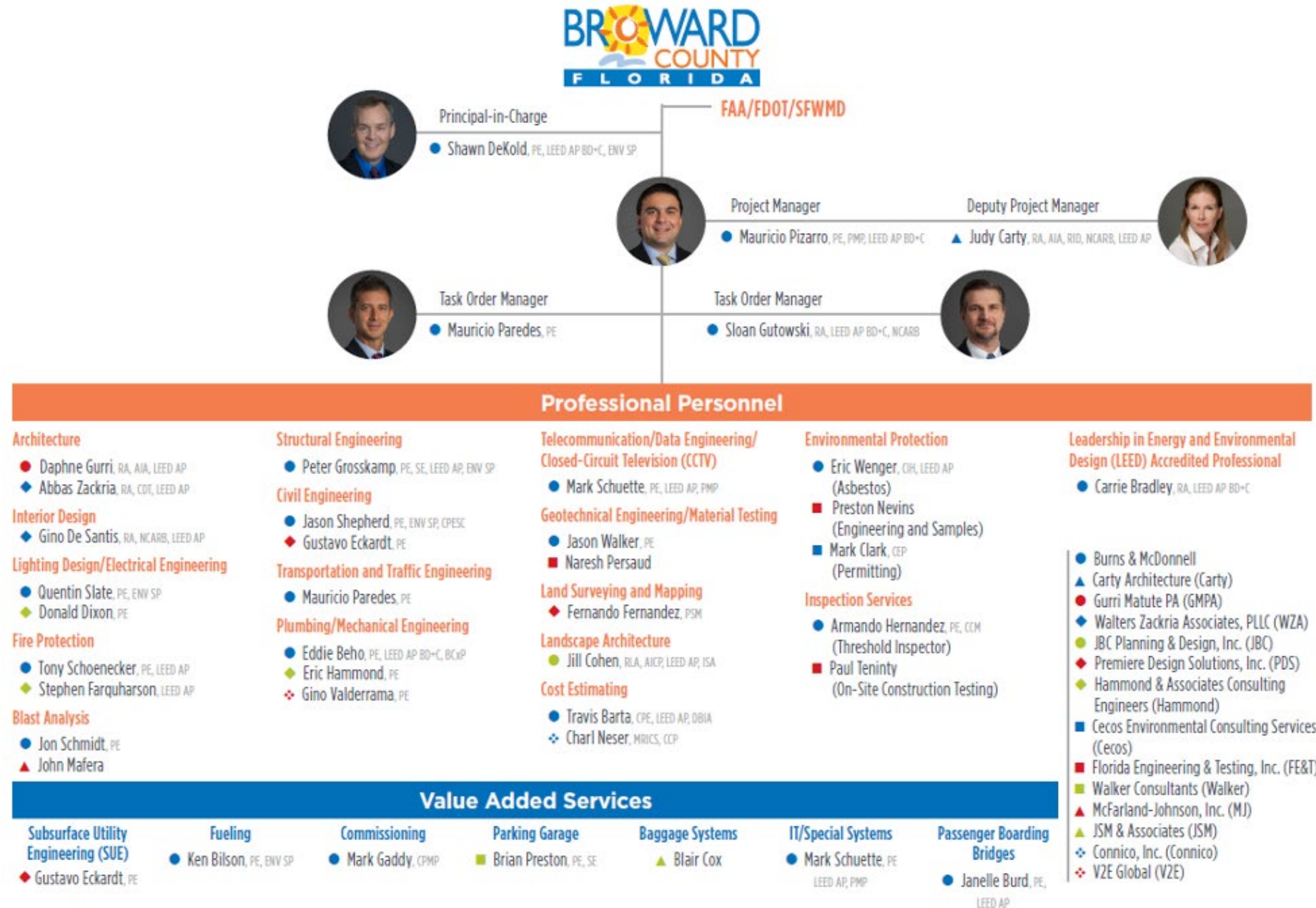
# 1

## **Ability of Professional Personnel**



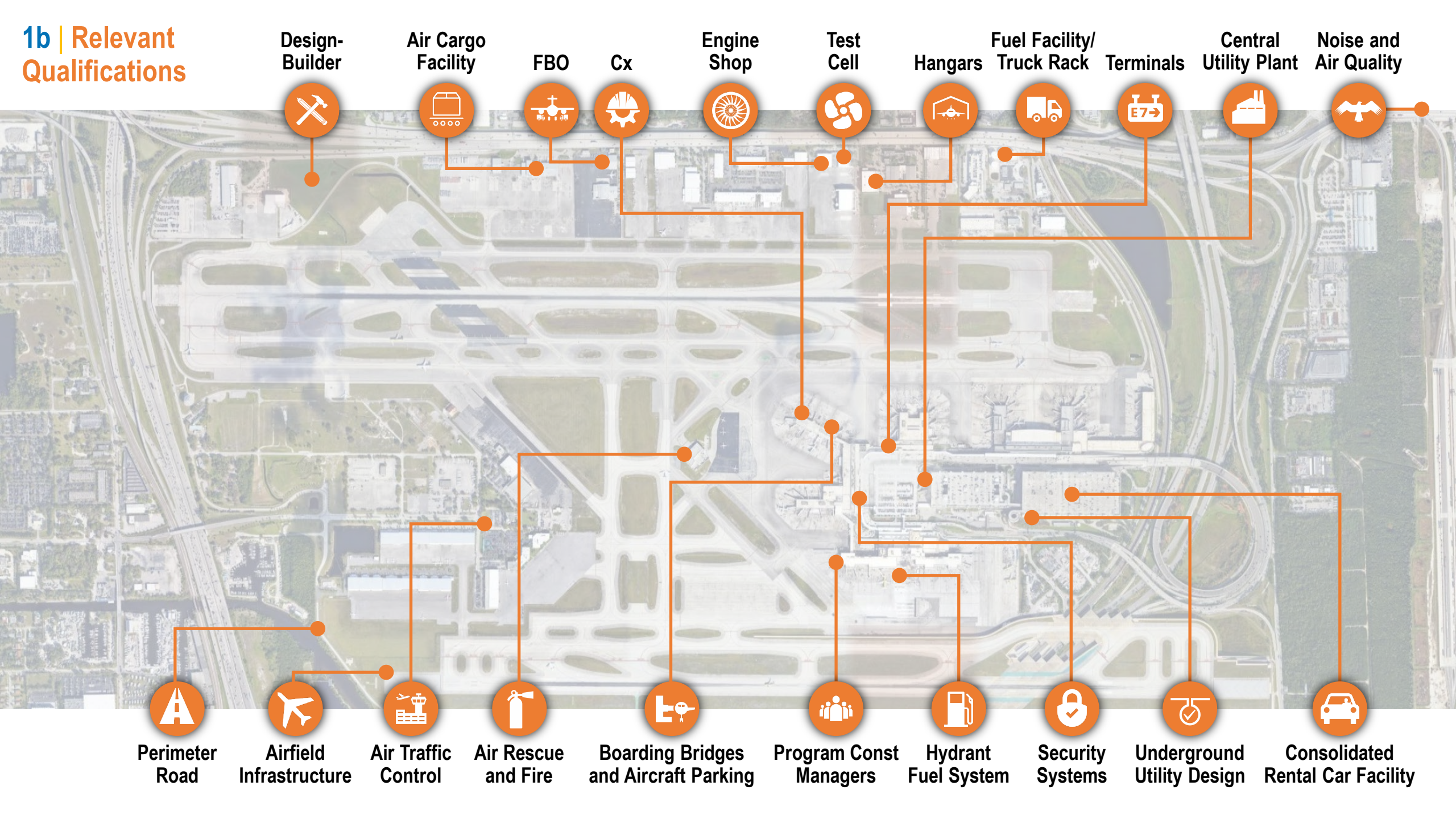


# 1a | Organizational Chart





1b | Relevant  
Qualifications





1b | Relevant  
Qualifications

Design-  
Builder



Air Cargo  
Facility



FBO



Cx



Engine  
Shop



Test  
Cell



Hangars



Fuel Facility/  
Truck Rack



Terminals



Central  
Utility Plant



Noise and  
Air Quality



Perimeter  
Road



Airfield  
Infrastructure



Air Traffic  
Control



Air Rescue  
and Fire



Boarding Bridges  
and Aircraft Parking



Program Const  
Managers



Hydrant  
Fuel System



Security  
Systems



Underground  
Utility Design



Consolidated  
Rental Car Facility



1b | Relevant Qualifications

Design-Builder

Air Cargo Facility

FBO

Cx

Engine Shop

Test Cell

Hangars

Fuel Facility/  
Truck Rack

**Terminals**

Central  
Utility Plant

Noise and  
Air Quality



Perimeter  
Road



Airfield  
Infrastructure



Air Traffic  
Control



Air Rescue  
and Fire



Boarding Bridges  
and Aircraft Parking



Program Const  
Managers



Hydrant  
Fuel System



Security  
Systems



Underground  
Utility Design



Consolidated  
Rental Car Facility



1b | Relevant Qualifications

Design-Builder

Air Cargo Facility

FBO

Cx

Engine Shop

Test Cell

Hangars

Fuel Facility/  
Truck Rack

Terminals

Central  
Utility Plant

Noise and  
Air Quality



Perimeter  
Road

Airfield  
Infrastructure

Air Traffic  
Control

Air Rescue  
and Fire

**Boarding Bridges  
and Aircraft Parking**

Program Const  
Managers

Hydrant  
Fuel System

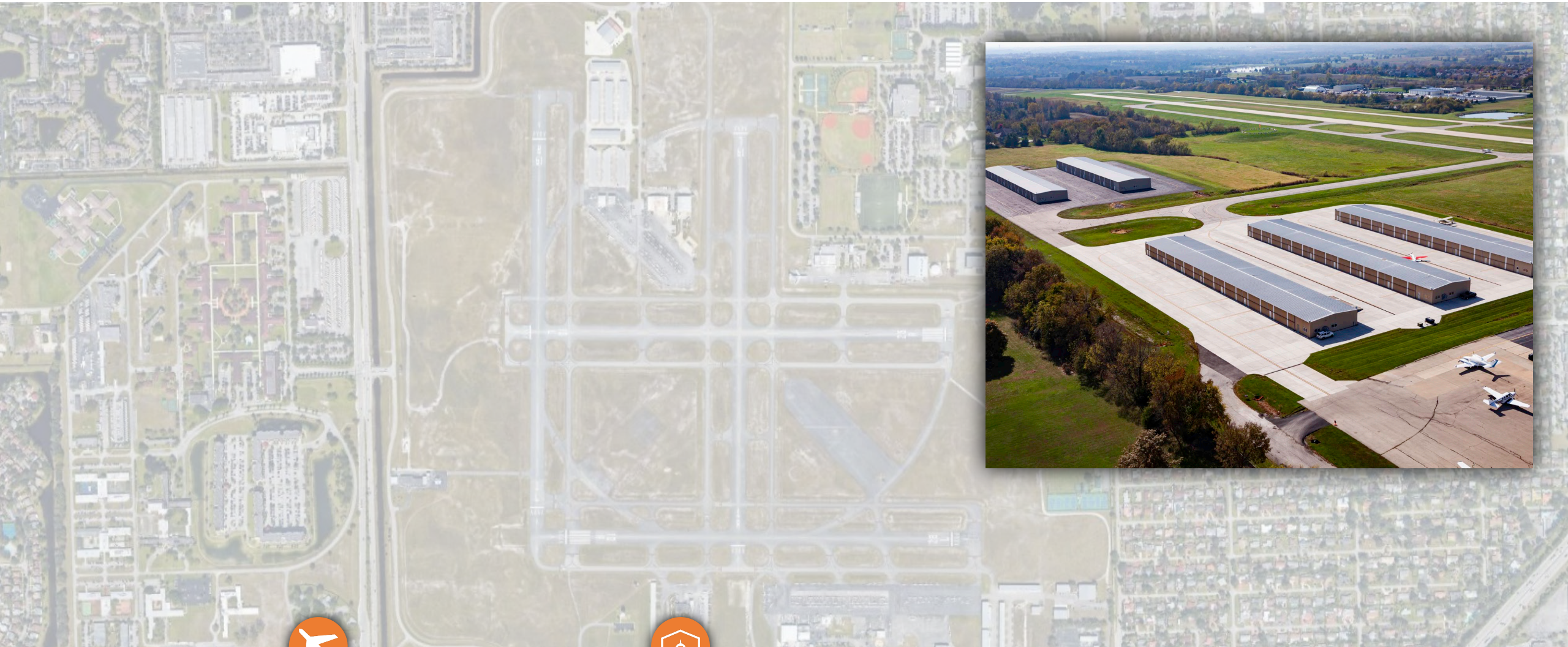
Security  
Systems

Underground  
Utility Design

Consolidated  
Rental Car Facility



1b | Relevant  
Qualifications



Airfield  
Infrastructure



Hangars







## Mauricio Pizarro, PE, PMP, LEED AP BD+C



### Project Manager

- ▶ 20 years of professional experience / 17 years of aviation
- ▶ Experience at 40+ airports, both domestic and international
- ▶ Delivered more than 150 projects
- ▶ Specializes in terminal, airside and landside projects
- ▶ Recent work at FLL new terminal 4 fueling system, terminal 3 ticketing, gates and BSO renovations, North Cargo Apron and GA Apron pavement repairs





## Judy Carty, AIA, NCARB, LEED AP



### Deputy Project Manager

- ▶ 25+ years of aviation experience
- ▶ Management of over \$2B of airport projects
- ▶ Specializes in airport planning and design
- ▶ Aviation experience – new buildings and renovations
- ▶ Recent South Florida FIS experience
- ▶ MIA, JFK, PTY, LGA, BUF, BWI, EWR



# 2

## **Project Approach**





# Project Approach



**Scope  
Verification**



**Design  
Services**



**Bid and  
Award**



**Construction  
Administration**

**Change Order Prevention and Management**







# Project Approach



## Scope Verification

- ▶ **Project Definition Document verification**
- ▶ Records availability
- ▶ Meet with BCAD
- ▶ Define team members
- ▶ Outline task
- ▶ Develop scope, schedule, fee





# Project Approach



## Design Services

- ▶ Early concept review
- ▶ 30/60/90/100/IFC
- ▶ **Quality control**
- ▶ Cost
- ▶ Schedule
- ▶ Documented review meeting
- ▶ Permitting





# Project Approach



## **Change Order Prevention and Management**

- ▶ Prevention through Project Approach
- ▶ Project Definition Documents
- ▶ Quality Control
- ▶ Treat Money and Time as our own
- ▶ Value Engineer
- ▶ In-house Contractor Review
- ▶ Cost Review
- ▶ Schedule Review



# 3

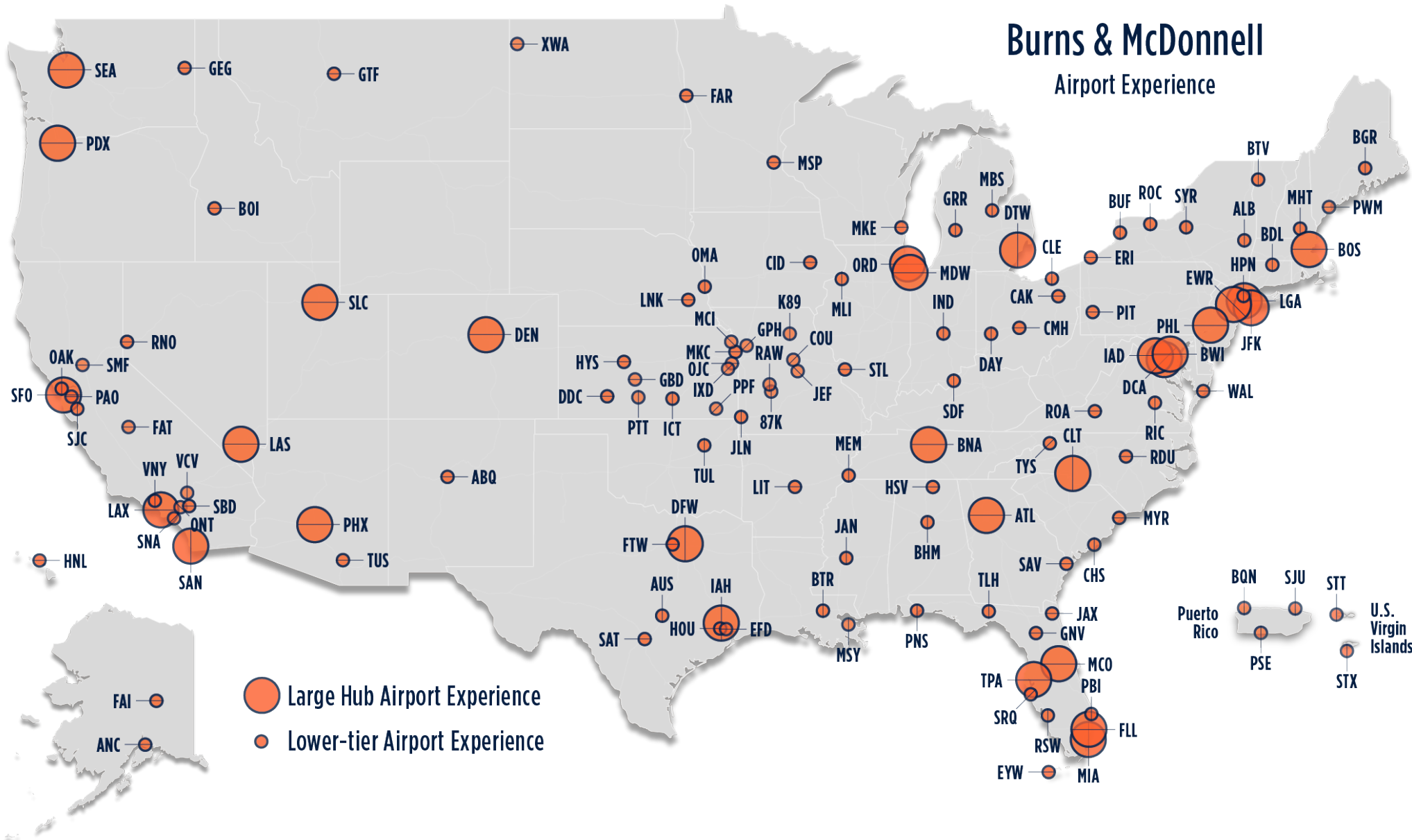
## **Past Performance**







## Burns & McDonnell Airport Experience



**Burns & McDonnell currently has more than 50 active airport on-calls nationwide**





# 224 Airports Globally including FLL

## Rebranding & NextGen Program for AA



### Projects of Similar Nature

Terminal ticketing upgrades and renovations at FLL



### Projects of Similar Scope

Project management, A/E design and construction administration services



### Projects of Similar Duration

24-month Design and Construction





# Miami International Airport (MIA)

## EDP On-Call – Airfield Security Gate Upgrades (5 Gates)



### Projects of Similar Nature

Airfield Security Gate Relocation and Enhancement at FLL (Gate 100)



### Projects of Similar Scope

Project management, mechanical, electrical, civil, structural, estimating, construction administration services



### Projects of Similar Duration

6-month Design



# San Juan International Airport (SJU)

## A/E On-Call Contract



### Projects of Similar Nature

A/E On-Call for FLL and HWO, Building Projects



### Projects of Similar Scope

Project management, A/E design and construction administration services, estimating, permitting, bid and award



### Projects of Similar Duration

5 Year On-Call Contract



# Hartsfield-Jackson Atlanta Int'l Airport (ATL)

## A380 Gate F3 Reconfiguration



### Projects of Similar Nature

Passenger Boarding Bridge replacements at FLL



### Projects of Similar Scope

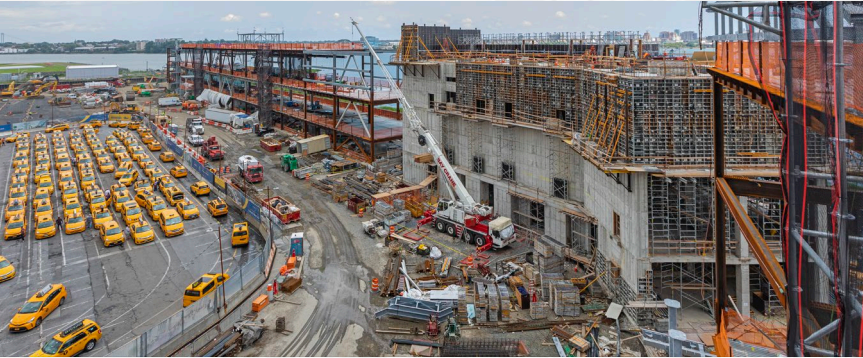
Project management, civil, MEP, design and construction administration services



### Projects of Similar Duration

12-month design





## **LaGuardia Airport | LGA**

**Delta Air Lines**

**Terminal C&D  
Reconstruction**



## **Multiple Locations | FLL, MCO, DAB, TPA, SRQ, CVG, LEX, CHS, ILM**

**Federal Aviation  
Administration**

**ATCT and NAVAIDs  
On-Call Contracts**



## **Los Angeles International Airport | LAX**

**Los Angeles  
World Airports**

**Midfield Satellite  
Concourse**





## **Miami International Airport | MIA**

**Miami-Dade  
Aviation  
Department**

**South and Central  
CBIS/CBRA/BHS  
Program**



## **Denver International Airport | DEN**

**City and County  
of Denver  
Dept of Aviation**

**Central Utility Plant  
(CUP) On-Call  
Projects**



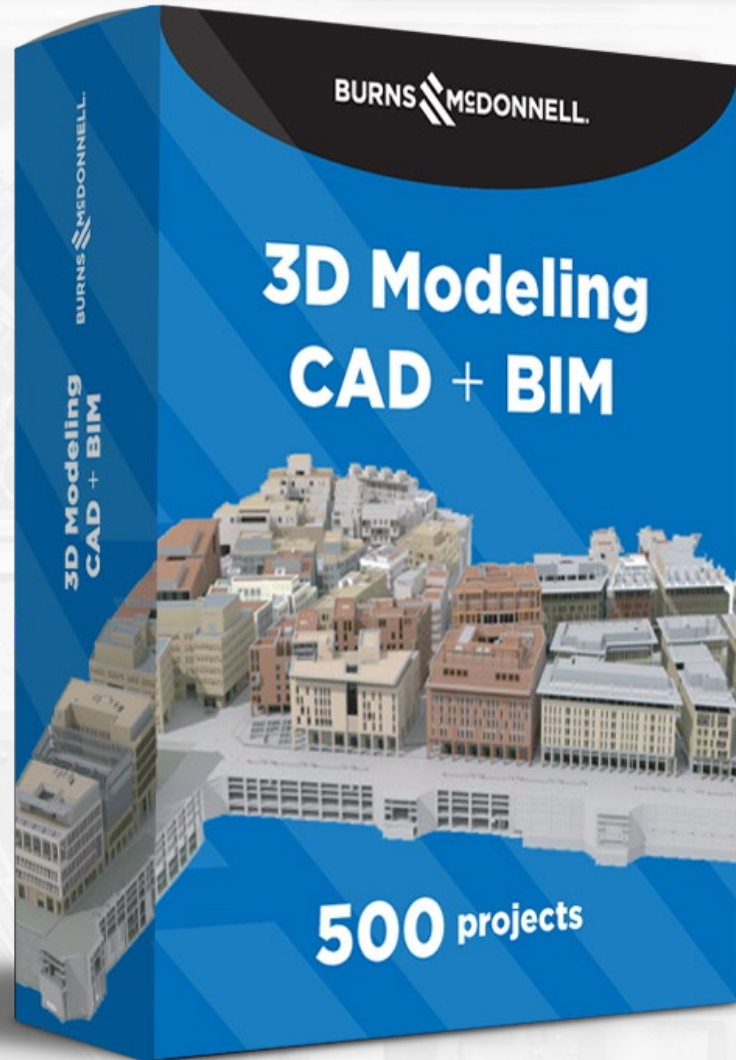
## **Fort Lauderdale-Hollywood Intl Airport | FLL**

**Broward County  
Aviation  
Department**

**Terminal 4 Hydrant  
Fueling System**



## Capabilities in CAD / BIM



Burns & McDonnell is an industry leader in the use of

**CAD, 3D modeling, and BIM**

having completed more than **500 projects** in BIM since 2008.



# Experience in Permits / Licenses / Approvals



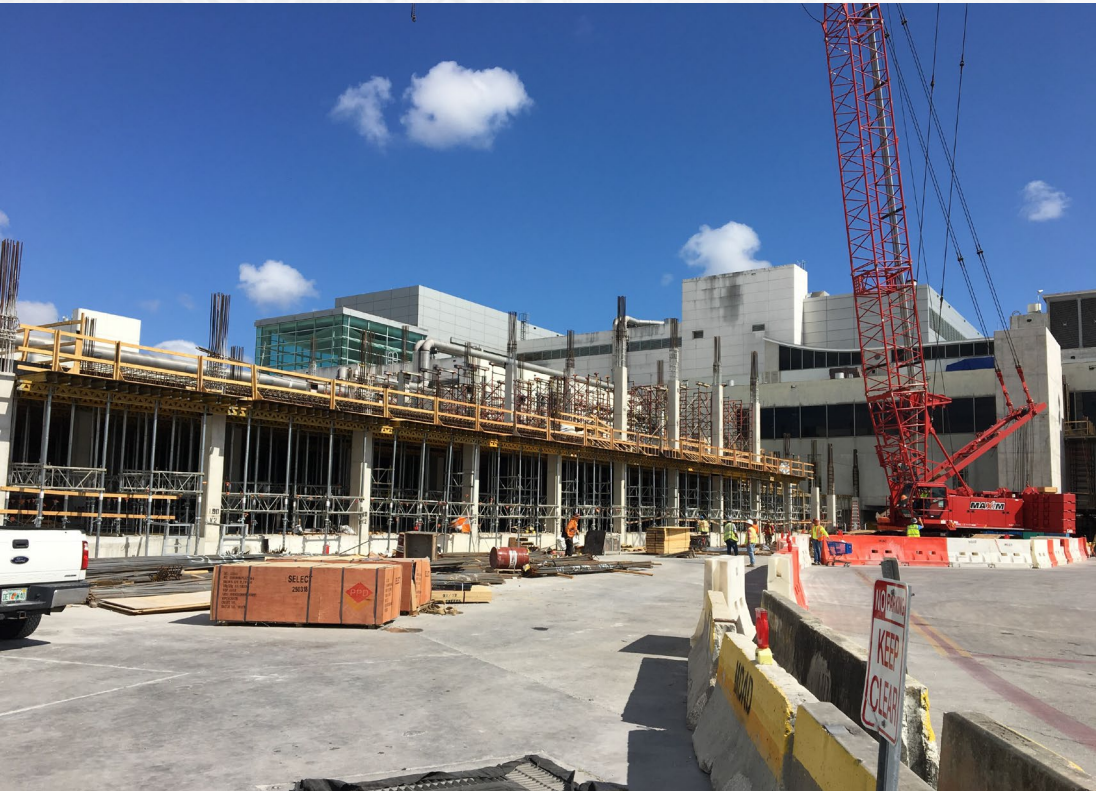
US Army Corps  
of Engineers®







# Experience Providing Construction Administration Services and Engineering Inspections



Services we provide:

- ▶ Resident project representative
- ▶ Preconstruction conferences
- ▶ Shop drawings and RFIs
- ▶ Change order evaluation
- ▶ Periodic site visits
- ▶ Pay application review
- ▶ Punch list
- ▶ Record documents
- ▶ Project closeout



# 4

## **Workload of the Firm**







**41,000+**

active or completed  
projects within the  
last five years across  
the entire firm



**60+**

offices globally,  
with more than



**7,600**

employee  
owners

**1,151**

projects were  
executed by our  
aviation group



**500**

aviation  
specialists



**1,500**

concurrent  
projects in the  
Southeast region



**5**

**Location**



**6**

**Willingness to Meet Time  
and Budget Requirements**



**7**

**Volume of Previous Work**







**BURNS  MCDONNELL®**