

**GENERAL NOTES:**

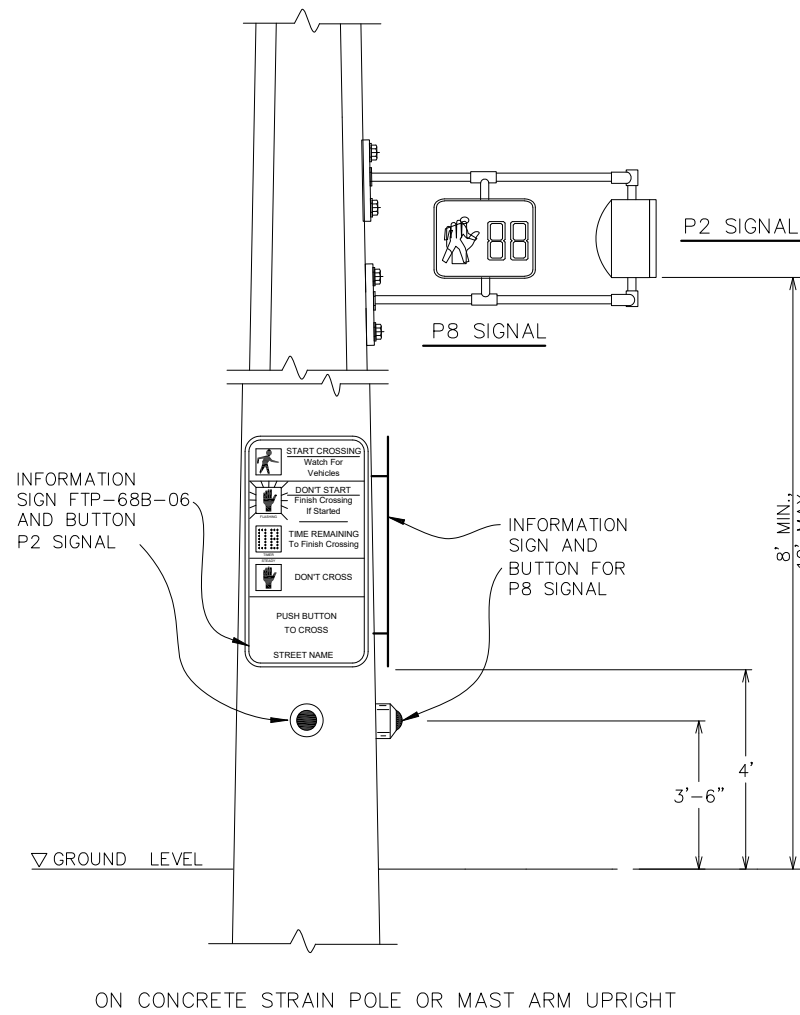
1. SIGNAL CABLE SHALL BE SPLICED TO A SEPARATE 4 CONDUCTOR CABLE FOR EACH PEDESTRIAN INDICATION AND TO A SEPARATE TWO CONDUCTOR BELDEN CABLE FOR EACH DETECTOR PUSH BUTTON, ASSURING SPARE CONDUCTORS FOR FUTURE INDICATION UPGRADES. THESE SPLICES SHALL BE INSTALLED IN EITHER THE HAND-HOLE OF THE STEEL POLE/CONCRETE STRAIN POLE OR WITHIN THE TRANSFORMER BASE OF PEDESTRIAN PEDESTAL.
2. THE COLOR CODE OF SIGNAL CABLE SHALL BE VERIFIED WITH BROWARD COUNTY PRIOR TO WIRING INTERSECTION. A PERMANENT TAG SHALL BE PLACED AT BOTH OF THE WIRE TERMINATIONS DESIGNATING THE PHASE USED. ALL UNUSED SIGNAL WIRES SHALL BE BONDED TO THE POLE GROUND. DETECTOR PUSH BUTTON TWO CONDUCTOR BELDEN CABLE SHALL HAVE SHIELD WIRE BONDED TO THE POLE GROUND.
3. THE OUTSIDE INSULATION JACKET OF ALL SIGNAL CABLES SHALL REMAIN INTACT FROM THE SIGNAL HEADS TO THE FIELD TERMINATION POINTS. UNDER NO CIRCUMSTANCES SHALL UN-JACKETED INDIVIDUAL CONDUCTORS REST IN ANY FIELD DRILLED STRUCTURES OR ASSEMBLIES.
4. ALL SURFACE MOUNTED/ ABOVE GROUND CONDUIT PER THE NEC MUST BE GROUNDED.
5. USE EITHER A SOLID OR STRANDED NO. 6 AWG COPPER INSULATED (GREEN) CONDUCTOR FOR ALL APPLICATIONS. MAKE ALL BONDS BETWEEN GROUND WIRES AND GROUND ELECTRODES ASSEMBLIES EXOTHERMICALLY.
6. ALL APL PRODUCTS MUST BE SUBMITTED AND APPROVED BY THE EOR AND PLACED IN THE SUBMITTAL PACKAGE PRIOR TO INSTALLATIONS

**REMOTE ADA COMPLIANT PEDESTRIAN SIGNAL MODIFICATION ON EXISTING CONCRETE STRAIN POLE:**

1. CONTRACTOR SHALL DIRECTIONAL BORE 1 RUN OF NEW CONDUIT AND NEW SIGNAL CABLE TO BE RUN FROM REMOTE PEDESTRIAN SIGNAL TO CABINET.
2. IF GIVEN PRIOR APPROVAL BY THE COUNTY, THE CONTRACTOR SHALL INSTALL A SURFACE MOUNT 2" GALVANIZED RIGID CONDUIT, COMPLETE WITH 2" WEATHERHEAD, ORIGINATING FROM A PULLBOX AT THE BASE OF THE STRAIN POLE TO A POINT ADJACENT TO THE EXISTING STRAIN POLE WEATHERHEAD (MINIMUM 30" IN HEIGHT). NEW SIGNAL CABLE SHALL BE INSTALLED FROM THE REMOTE PEDESTRIAN PEDESTAL TO THE HAND HOLD OF THE STRAIN POLE. SPLICES SHALL BE MADE IN THE STRAIN POLE HAND HOLE BY APPROVED WEATHER-PROOF METHODS. ALL INSTALLATIONS MUST BE ON THE BACKSIDE OF THE EXISTING CONCRETE POLE TO AVOID TRAFFIC AND ADA HAZARDS. A MINIMUM OF ONE (1) GALVANIZED STRAP EVERY 5' WILL BE USED TO SECURELY ATTACH THE RIGID GALVANIZED CONDUIT TO THE EXISTING CONCRETE POLE. ALL FLOATING TERMINATIONS WILL BE INSIDE THE POLE AND WEATHER APPROVED. ADDITIONALLY THE INSTALLATION MUST:
  - NOT COVER THE HANDHOLE
  - MUST CLEAR THE STEEL IN THE STRAIN POLE

**DETECTORS:**

1. ACCESSIBLE PEDESTRIAN PUSH BUTTONS (APs) SHALL ONLY BE INSTALLED AT NEW OR REBUILT INTERSECTIONS AND SIGNALIZED PEDESTRIAN CROSSINGS WHEN APPROVED BY BROWARD COUNTY.
2. INSTALL APs BUTTONS WHEN REPLACING EXISTING AUDIBLE DETECTORS. CONTRACTORS SHALL RETURN EXISTING EQUIPMENT TO BCTD.
3. PEDESTRIAN PUSH BUTTONS SHALL INCLUDE MUTCD PEDESTRIAN SIGN FTP-68B-06 FOR EACH BUTTON, PAYMENT FOR PED SIGN IS INCLUDED IN THE PRICE FOR THE PEDESTRIAN DETECTOR.
4. PUSH BUTTONS AND SIGNS ARE TO BE MOUNTED IN ACCORDANCE WITH FDOT STANDARD SPECIFICATIONS, SECTION 665 AND DESIGN STANDARD 665-001.
5. CONTACT THE ENGINEER BEFORE PROCEEDING IF ALL ADA REQUIREMENTS CANNOT BE MET REGARDING THE PLACEMENT AND ACCESSIBILITY OF BUTTONS.
6. ALL NEWLY INSTALLED APs BUTTONS SHALL BE CAPABLE OF EMITTING BOTH TONES AND SPEECH MESSAGES. SPEECH MESSAGES SHALL IDENTIFY THE NAME OF THE STREET TO BE CROSSED AND INDICATE FOR THE PED TO WAIT AND INDICATES WHEN THE WALK INTERVAL IS ACTIVE AND REPEATS DURING THE DURATION OF THE WALK INTERVAL. EXAMPLE WAIT AND WALK SPEECH MESSAGES IS "WAIT TO CROSS PINE ISLAND RD AT BROWARD BLVD, WAIT" AND "PINE ISLAND RD, WALK SIGN IS ON TO CROSS PINE ISLAND RD".
7. ACTUAL USE OF TONES OR SPEECH MESSAGE IS DEPENDED ON THE FINAL LOCATION OF THE APs BUTTON; HOWEVER, ALL INSTALLED APs BUTTONS MUST BE CAPABLE OF BOTH TONES AND APPROPRIATE SPEECH MESSAGES.
8. THE INSTALLATION OF APs BUTTONS SHALL COMPLY WITH SECTIONS 4E.08 THROUGH 4E.13 OF THE MUTCD, 2009 AND THE DRAFT PUBLIC RIGHTS-OF-WAY ACCESSIBILITY GUIDELINES (PROWAG), 2011.

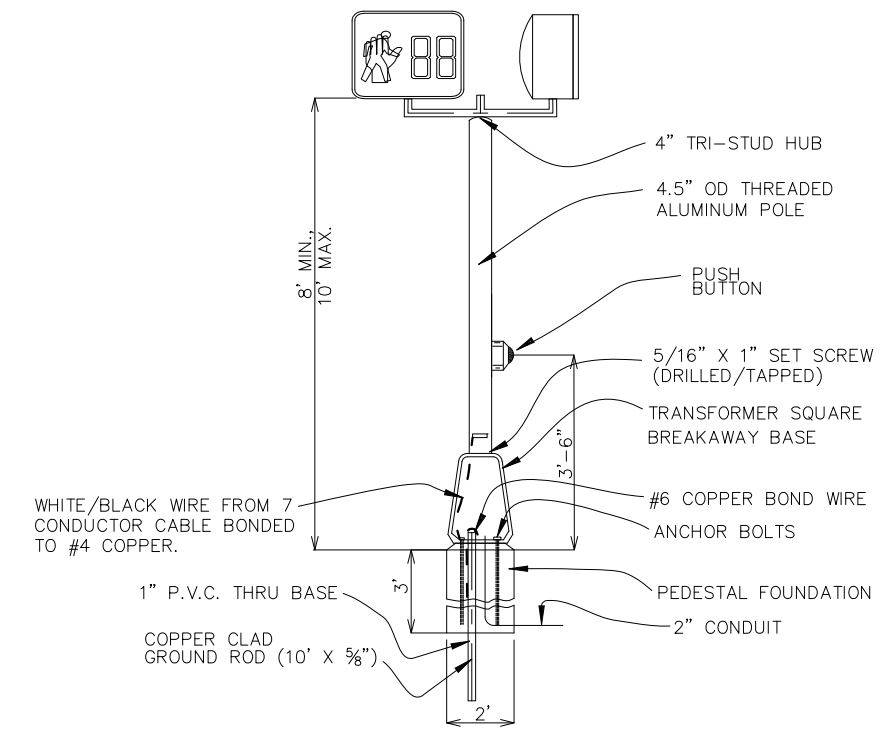


ON CONCRETE STRAIN POLE OR MAST ARM UPRIGHT



COUNTDOWN PEDESTRIAN SIGNAL

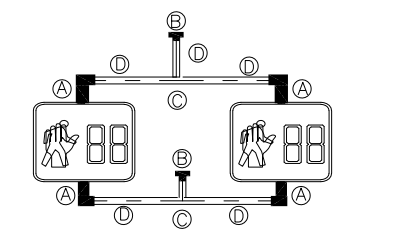
- (A) ONE SECTION LED
- (B) DIMENSIONS = 16"X18"
- (C) DEFAULT MODE = HAND ONLY
- (D) FULLY MEETS ITE PED SPEC
- (E) TURN-ON/TURN-OFF TIME FOR HAND/PERSON = 75MSEC MAX.



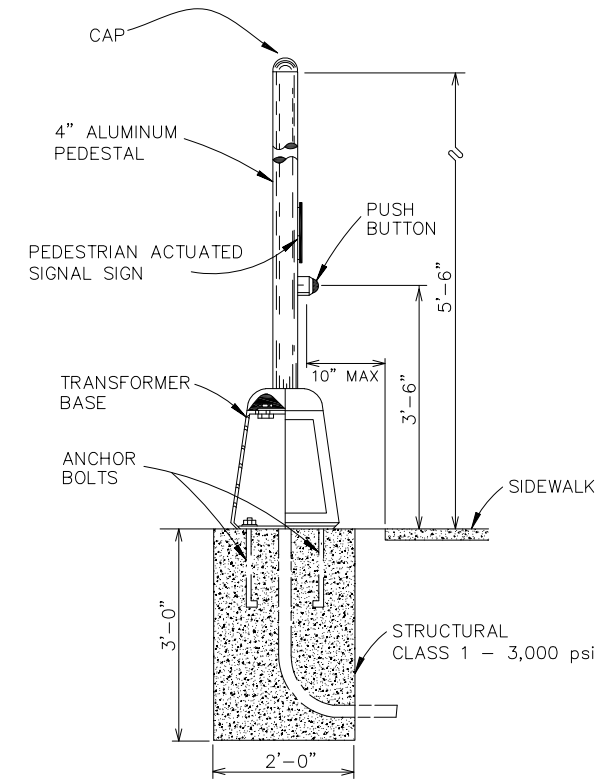
ON PEDESTAL AND PEDESTAL STATION/DETECTOR STATION

**NOTE:**

1. BOND PED FIXTURE TO GROUND ROD, PEDESTAL MOUNT AND POST.
2. ALL PEDESTALS SHALL BE PROVIDED WITH ALUMINUM BREAKAWAY TRANSFORMER TYPE BASES.



- (A) TRI-STUD ALUM. ELBOW
  - (B) POLE PLATE ALUM.
  - (C) 1 1/2" ALUM. TEE
  - (D) 1 1/2" X 7" OR 8" ALUM. NIPPLE \*
- \* LENGTH OF ALUMINUM NIPPLE IS DEPENDENT ON SIGNAL HEAD ORIENTATION.



REVISIONS	
DATE	DESCRIPTION
03-12-2018	N/A
08-30-2021	ADDED FOOTING CONCRETE CLASS
03-11-2026	REVISED DETECTORS NOTES



<b>PUBLIC WORKS DEPARTMENT TRAFFIC ENGINEERING DIVISION</b>	
DESIGN BY: REBECCA MARTINEZ, P.E	SCALE: NTS
DRAWN BY: STEPHON RAMOUTAR	
CHECKED BY: YVES D'ANJOU, P.E	

PEDESTRIAN SIGNAL AND  
DETECTOR INSTALLATION  
DETAILS

**SHEET NO.**  
**1 OF 1**