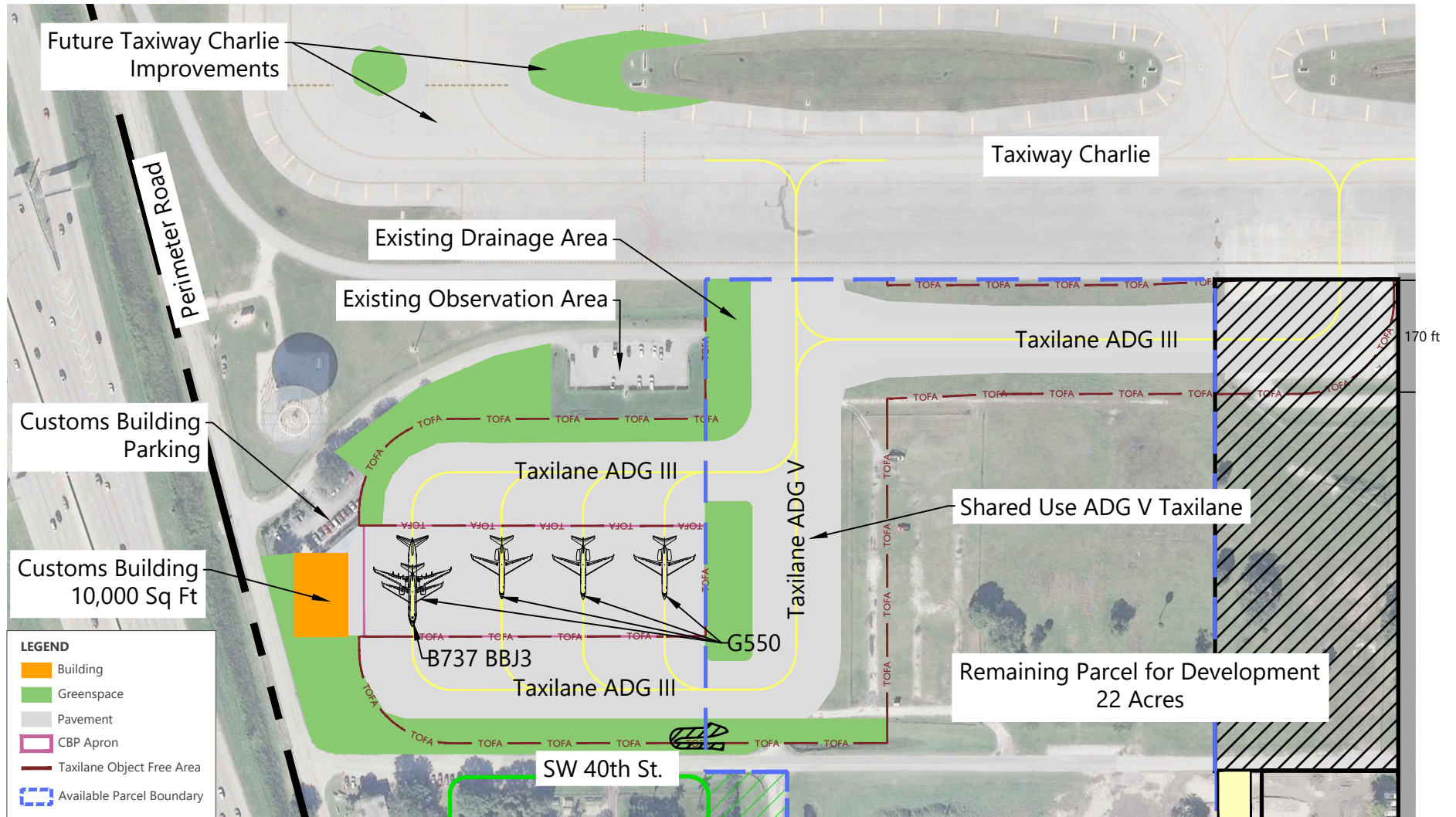




Appendix I  
**Additional Nonterminal Area Development Alternatives**

---





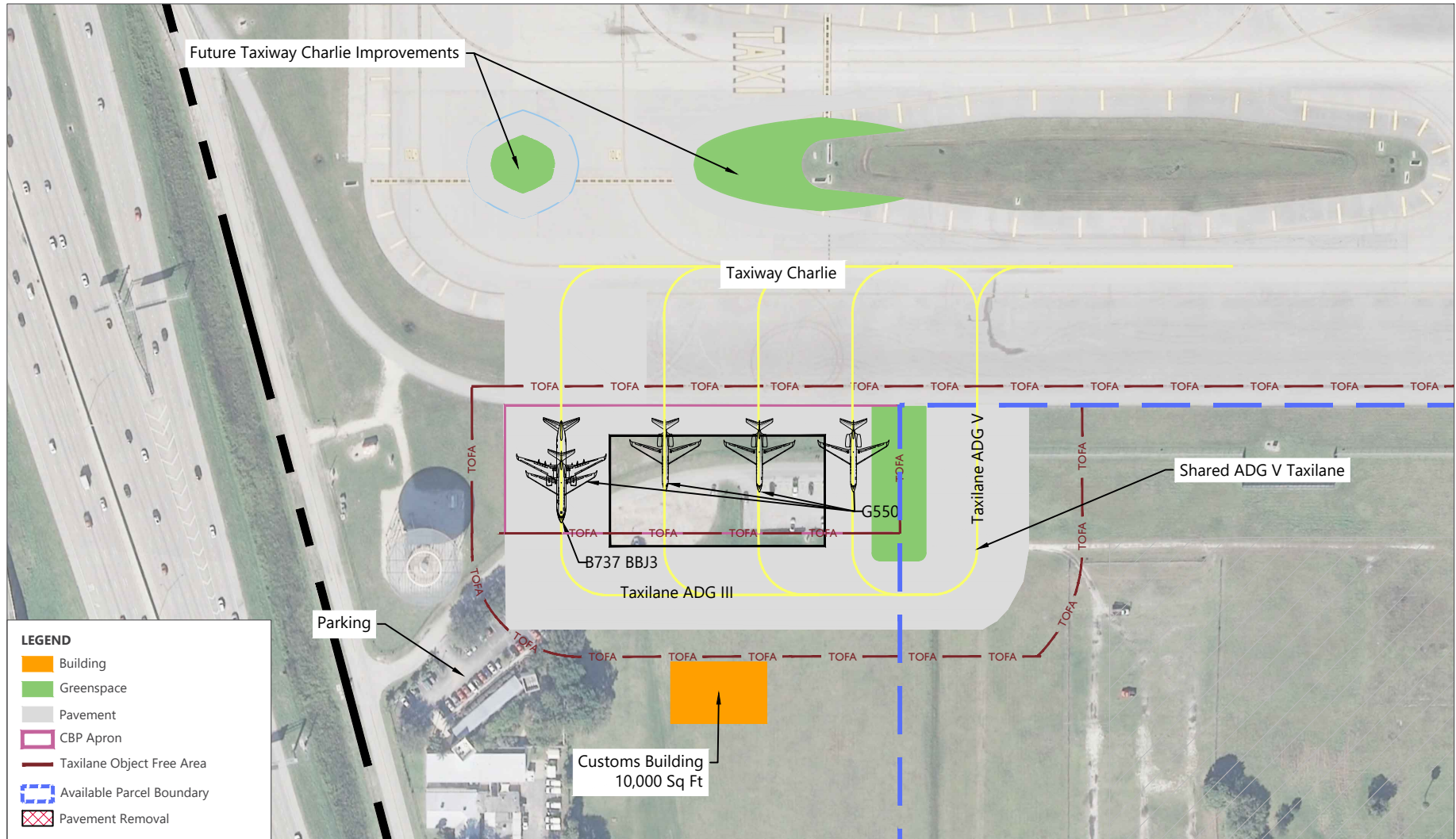
SOURCE: Quantum, Aerial Photography, 2016; Ricondo & Associates, Inc., April 2018.  
PREPARED BY: Ricondo & Associates, Inc., April 2018.

**EXHIBIT I-1**



### Customs and Border Protection (CBP) Relocation Alternative 1 - Horizontal Apron Layout on Parcel 15

Drawing: P:\Project-Miami\BCAD\2015 Master Plan Updates\01 - FLL Tasks\II-3 Alternatives\CAD\Support Facility Alternatives\FLL MP Alt Chapter Customs.dwg; Layout: 5.6-3 Alt 1 Plotted: Nov 2, 2020, 02:24PM



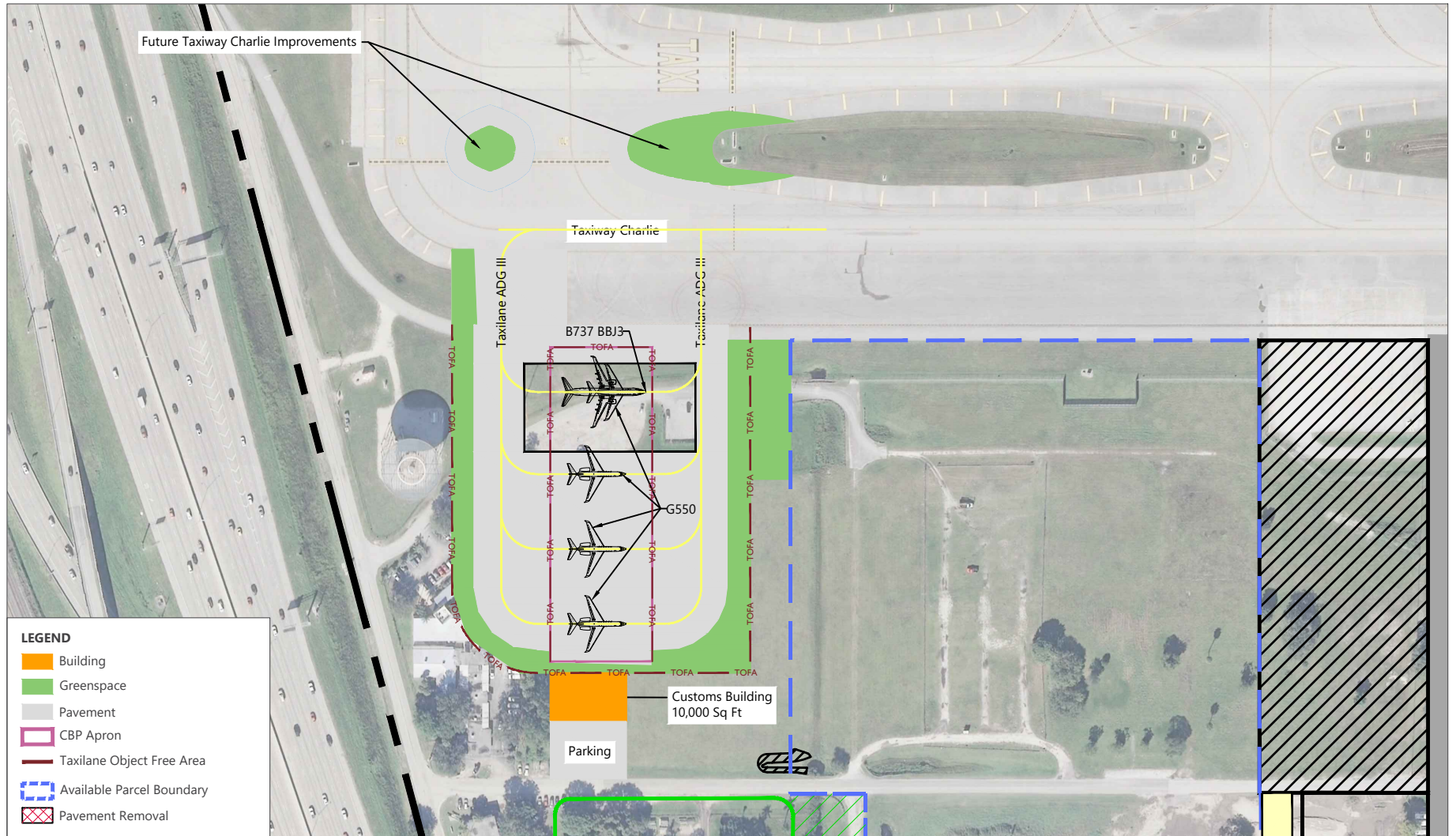
SOURCE: Quantum, Aerial Photography, 2016; Ricondo & Associates, Inc., April 2018.  
PREPARED BY: Ricondo & Associates, Inc., April 2018.

EXHIBIT I-2



### Customs and Border Protection (CBP) Relocation Alternative 2 - Horizontal Apron Layout Adjacent to Taxiway Charlie

Drawing: P:\Project-Miami\BCAD\2015 Master Plan Updates\01 - FLL Tasks\II-3 Alternatives\CAD\Support Facility Alternatives\FLL MP Alt Chapter Customs.dwg; Layout: 5.6-4 Alt 2 Plotted: Nov 2, 2020, 02:25PM



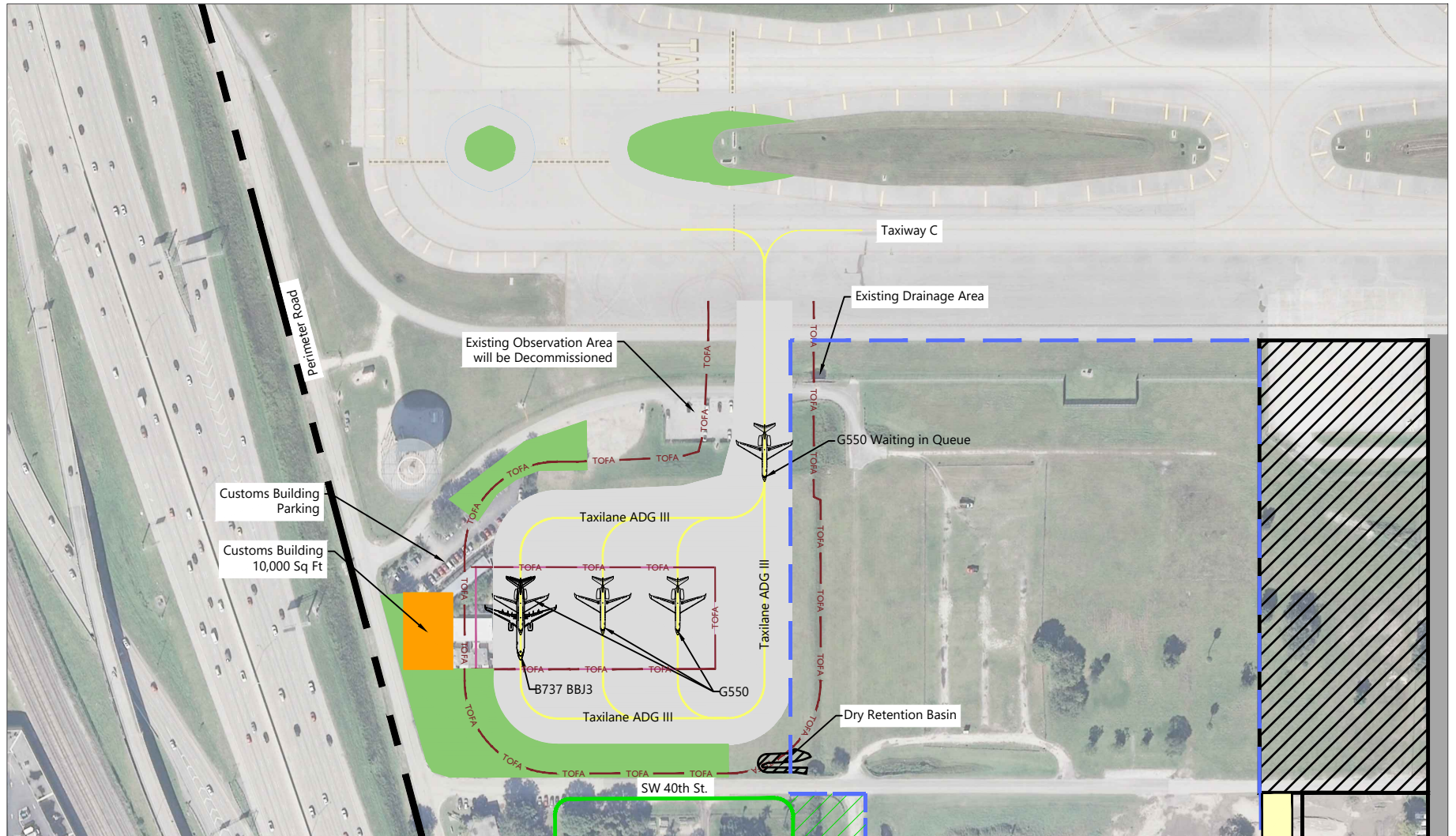
SOURCE: Quantum, Aerial Photography, 2016; Ricondo & Associates, Inc., April 2018.  
PREPARED BY: Ricondo & Associates, Inc., April 2018.

**EXHIBIT I-3**



### Customs and Border Protection (CBP) Relocation Alternative 3 - Horizontal Apron Layout Over Observation Area

Drawing: P:\Project-Miami\BCAD\2015 Master Plan Updates\01 - FLL Tasks\I-3 Alternatives\CAD\Support Facility Alternatives\FLL MP Alt Chapter Customs.dwg\Layout: 5.6-5 Alt 3 Plotted: Nov 2, 2020, 02:25PM



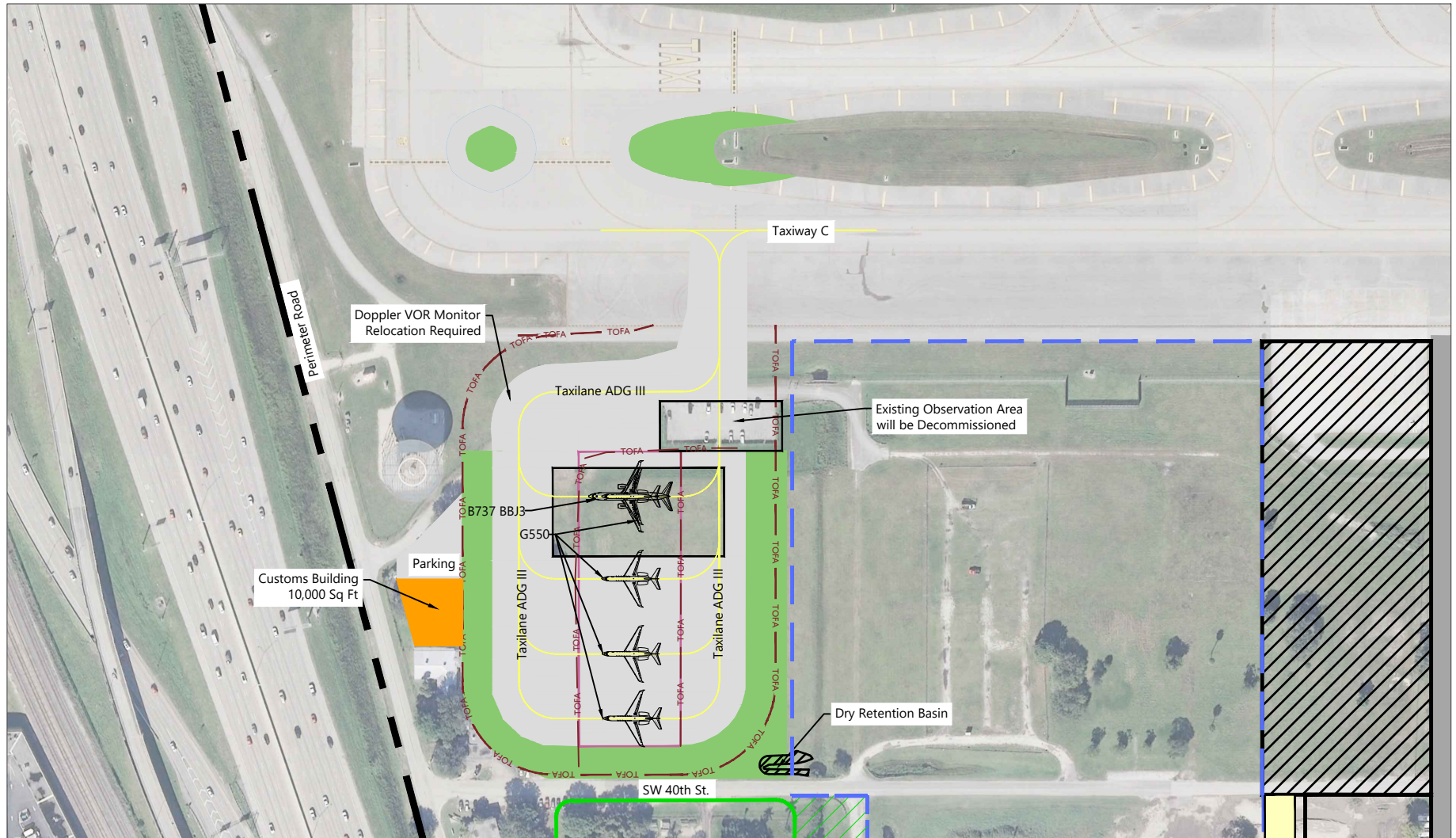
SOURCE: Quantum, Aerial Photography, 2016; Ricondo & Associates, Inc., April 2018.  
PREPARED BY: Ricondo & Associates, Inc., April 2018.

EXHIBIT I-4



### Customs and Border Protection (CBP) Relocation Alternative 4 - Horizontal Apron Layout Over Observation Area

Drawing: P:\Project-Miami\BCAD\2015 Master Plan Updates\01 - FLL Tasks\II-3 Alternatives\CAD\Support Facility Alternatives\FLL MP Alt Chapter Customs.dwg; Layout: 5.6-X Alt 4 Plotted: Nov 2, 2020, 02:26PM



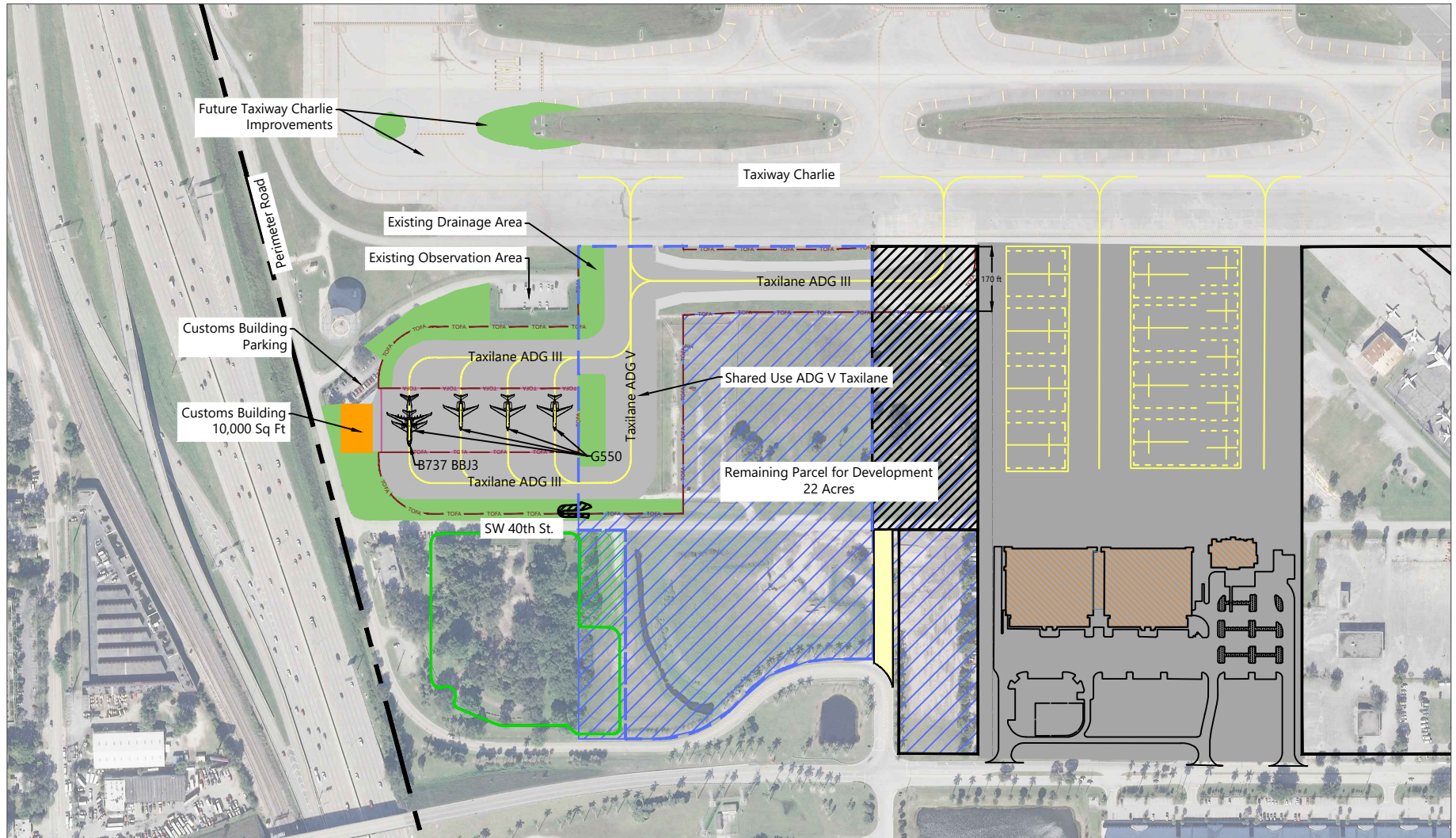
SOURCE: Quantum, Aerial Photography, 2016; Ricondo & Associates, Inc., April 2018.  
PREPARED BY: Ricondo & Associates, Inc., April 2018.

**EXHIBIT I-5**



## Customs and Border Protection (CBP) Relocation Alternative 5 - Horizontal Apron Layout Over Observation Area

Drawing: P:\Project-Miami\BCAD\2015 Master Plan Updates\01 - FLL Tasks\I-3 Alternatives\CAD\Support Facility Alternatives\FLL MP Alt Chapter Customs.dwg; Layout: 5.6-X Alt 5 Plotted: Nov 2, 2020, 02:27PM



SOURCE: Quantum, 2016 (aerial photography); Federal Aviation Administration (FAA), 5300-13A Change 1, *Airport Design*, February 26, 2014; Ricondo & Associates, Inc., July 2018.  
PREPARED BY: Ricondo & Associates, Inc., July 2018.

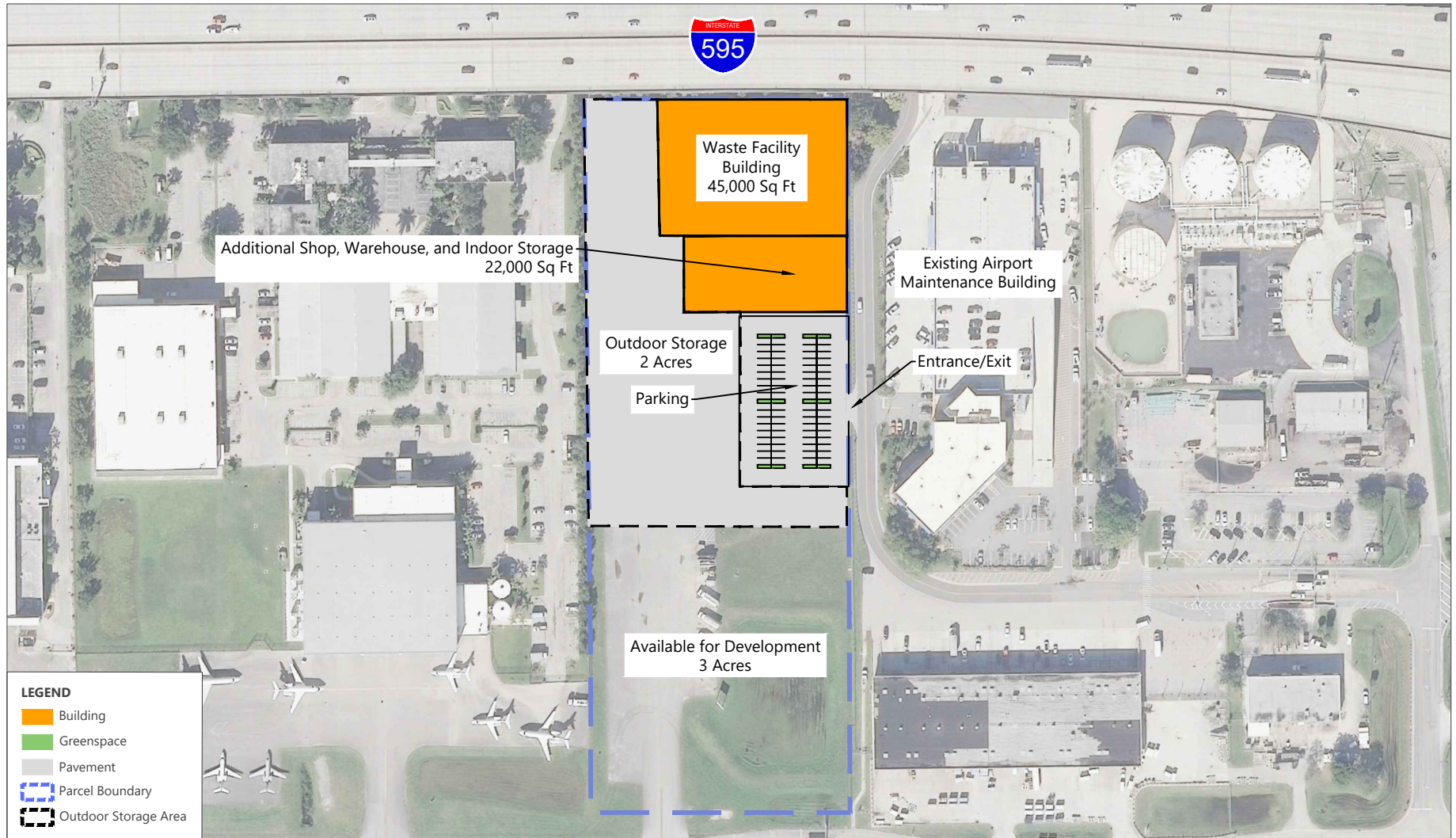
**EXHIBIT I-6**



### Customs and Border Protection (CBP) Relocation Concept 6 - ADG III Taxilane to CBP Facility

Drawing: P:\Project-Miami\BCAD\2015 Master Plan Updates\01 - FLL Tasks\I-3 Alternatives\CAD\Support Facility Alternatives\FLL MP Alt Chapter Customs.dwg; Layout: Concept 1 ADG 3 Taxilane w Service Road Plotted: Nov 2, 2020, 02:30PM





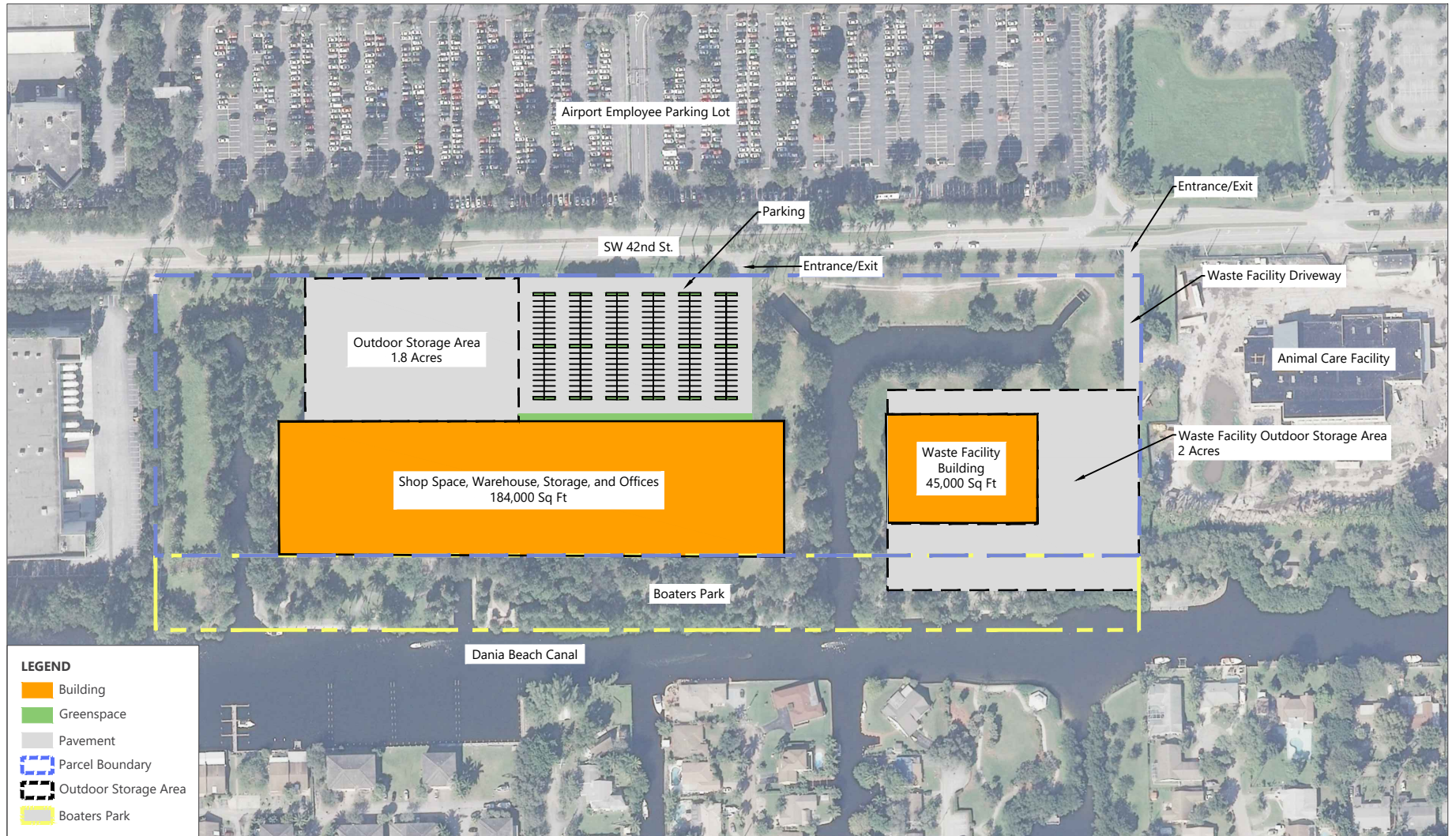
SOURCE: Quantum, 2016 (aerial photography).  
PREPARED BY: Ricondo & Associates, Inc., April 2018.

EXHIBIT I-7



### Airport Maintenance Alternative 1 - Decentralized Expansion on Adjacent Parcel

Drawing: P:\Project-Miami\BCAD\2015 Master Plan Updates\01 - FLL Tasks\I-3 Alternatives\CAD\Support Facility Alternatives\FLL MP Alt Chapter Airport Maintenance.dwg Layout: Alt 1 Plotted: Nov 2, 2020, 02:32PM



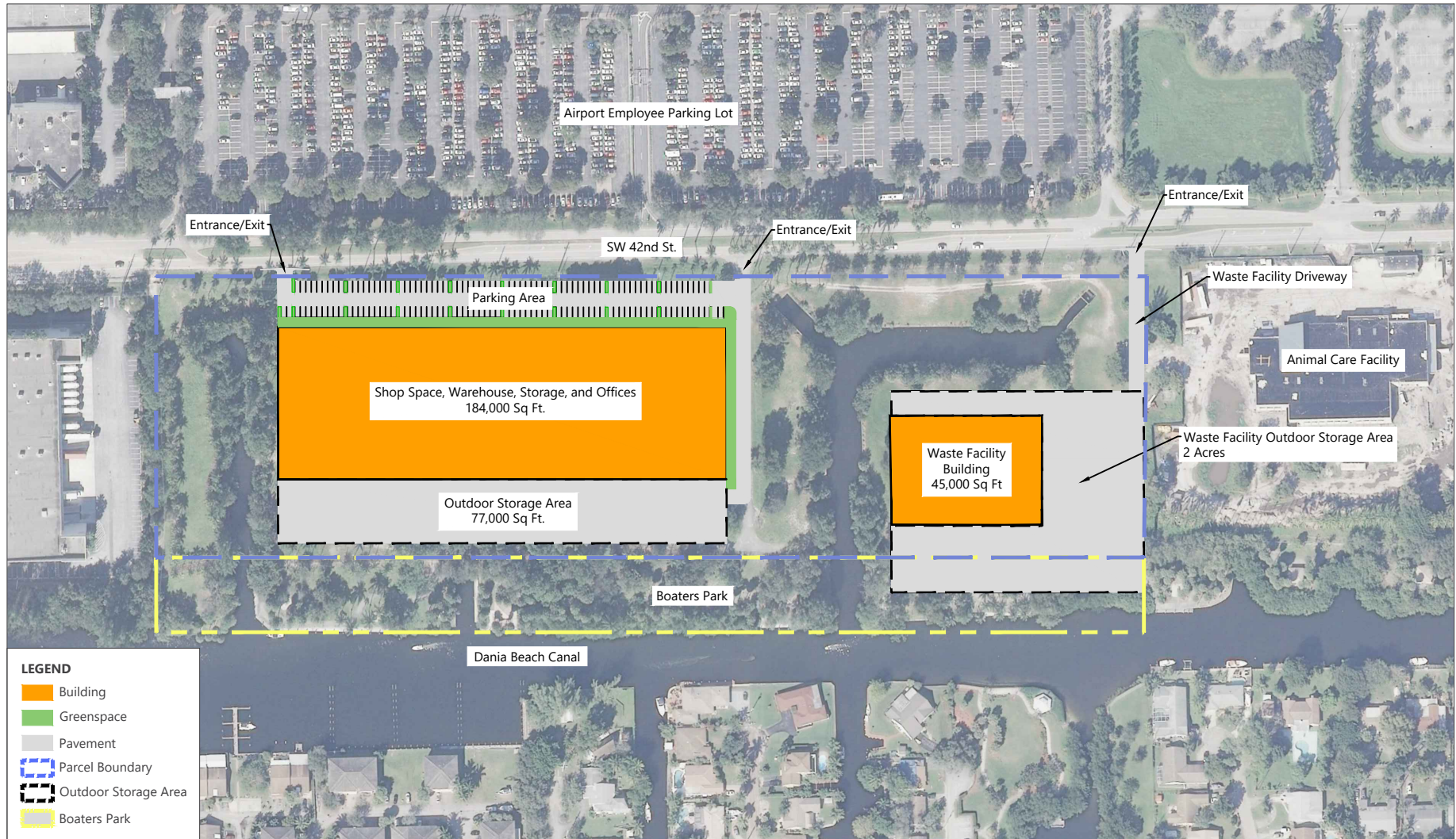
SOURCE: Quantum, 2016 (aerial photography).  
PREPARED BY: Ricondo & Associates, Inc., April 2018.

**EXHIBIT I-8**



## Airport Maintenance Alternative 2 - Centralized Expansion on Parcel 16

Drawing: P:\Project-Miami\BCAD\2015 Master Plan Updates\01 - FLL Tasks\I-3 Alternatives\CAD\Support Facility Alternatives\FLL MP Alt Chapter Airport Maintenance.dwg; Layout: Alt 4 Plotted: Nov 2, 2020, 02:32PM



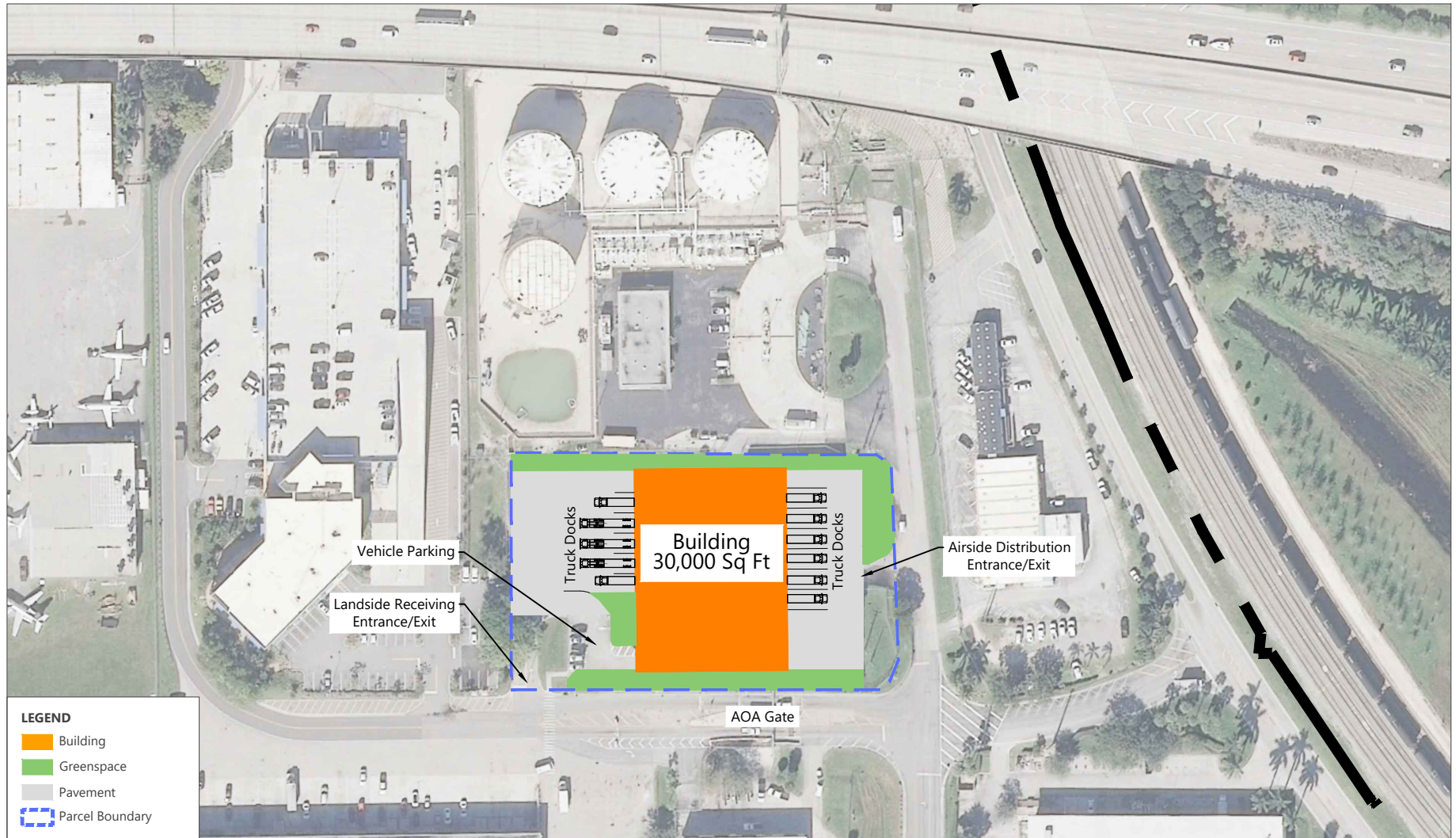
SOURCE: Quantum, 2016 (aerial photography).  
PREPARED BY: Ricondo & Associates, Inc., April 2018.

**EXHIBIT I-9**



## Airport Maintenance Alternative 3 - Centralized Expansion on Parcel 16

Drawing: P:\Project-Miami\BCAD\2015 Master Plan Updates\01 - FLL Tasks\I-3 Alternatives\CAD\Support Facility Alternatives\FLL MP Alt Chapter Airport Maintenance.dwg; Layout: Alt 5 Plotted: Nov 2, 2020, 02:32PM



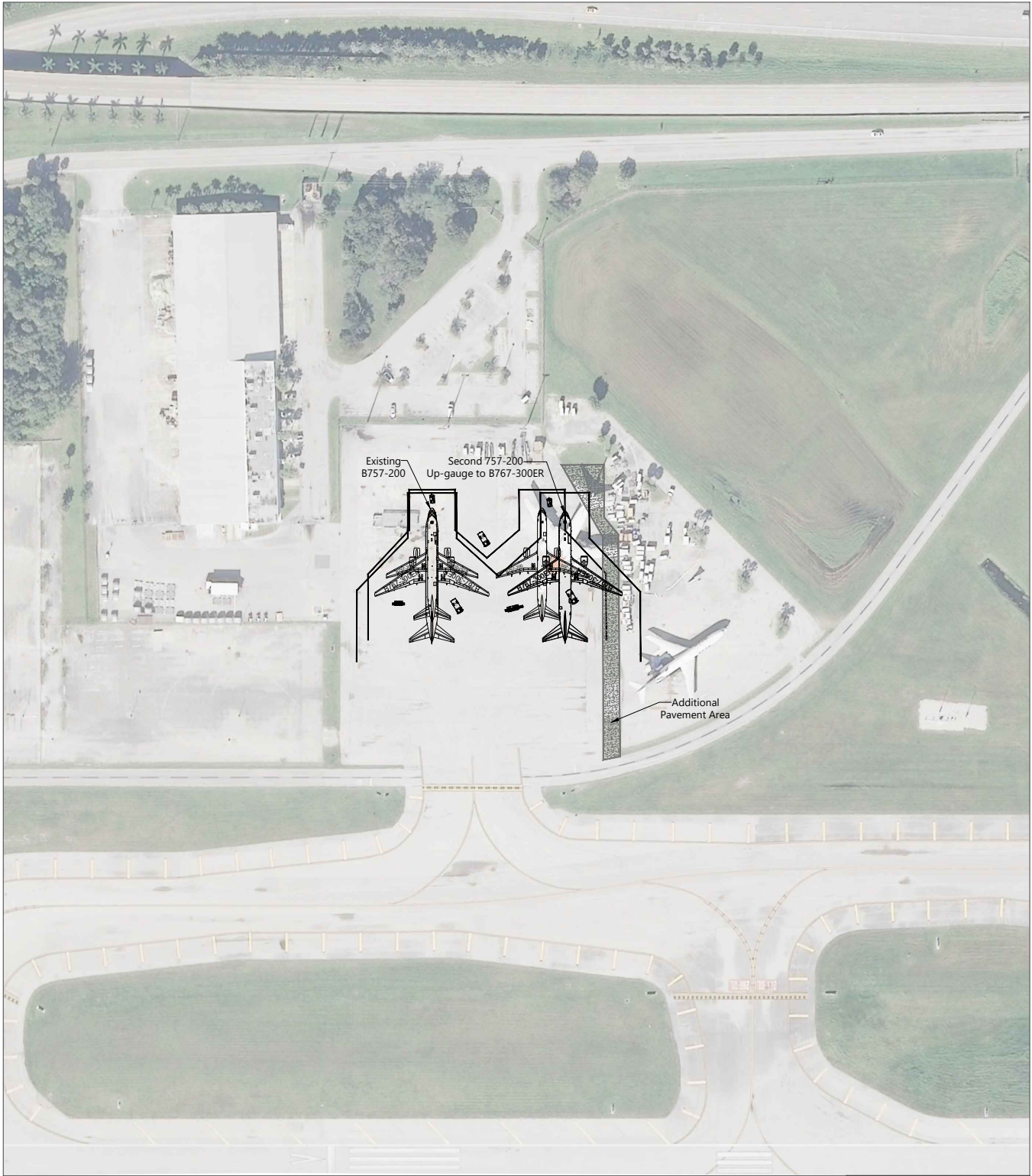
SOURCE: Quantum, 2016 (aerial photography).  
PREPARED BY: Ricondo & Associates, Inc., April 2018.

EXHIBIT I-10



### Centralized Receiving and Distribution Facility Alternative 1 - Utilizing Existing Storage Parcel

Drawing: P:\Project-Miami\BCAD\2015 Master Plan Updates\01 - FLL Tasks\I-3 Alternatives\CAD\Support Facility Alternatives\FLL MP Alt Chapter Centralized Receiving Facility.dwg; Layout: Alt 2 Plotted: Nov 2, 2020, 02:35PM



SOURCE: Broward County Aviation Department, Fort Lauderdale-Hollywood International Airport, Airport Layout Plan, February 2011; Ricondo & Associates, Inc., October 2017  
PREPARED BY: Ricondo & Associates, Inc., October 2017.

**EXHIBIT I-11**

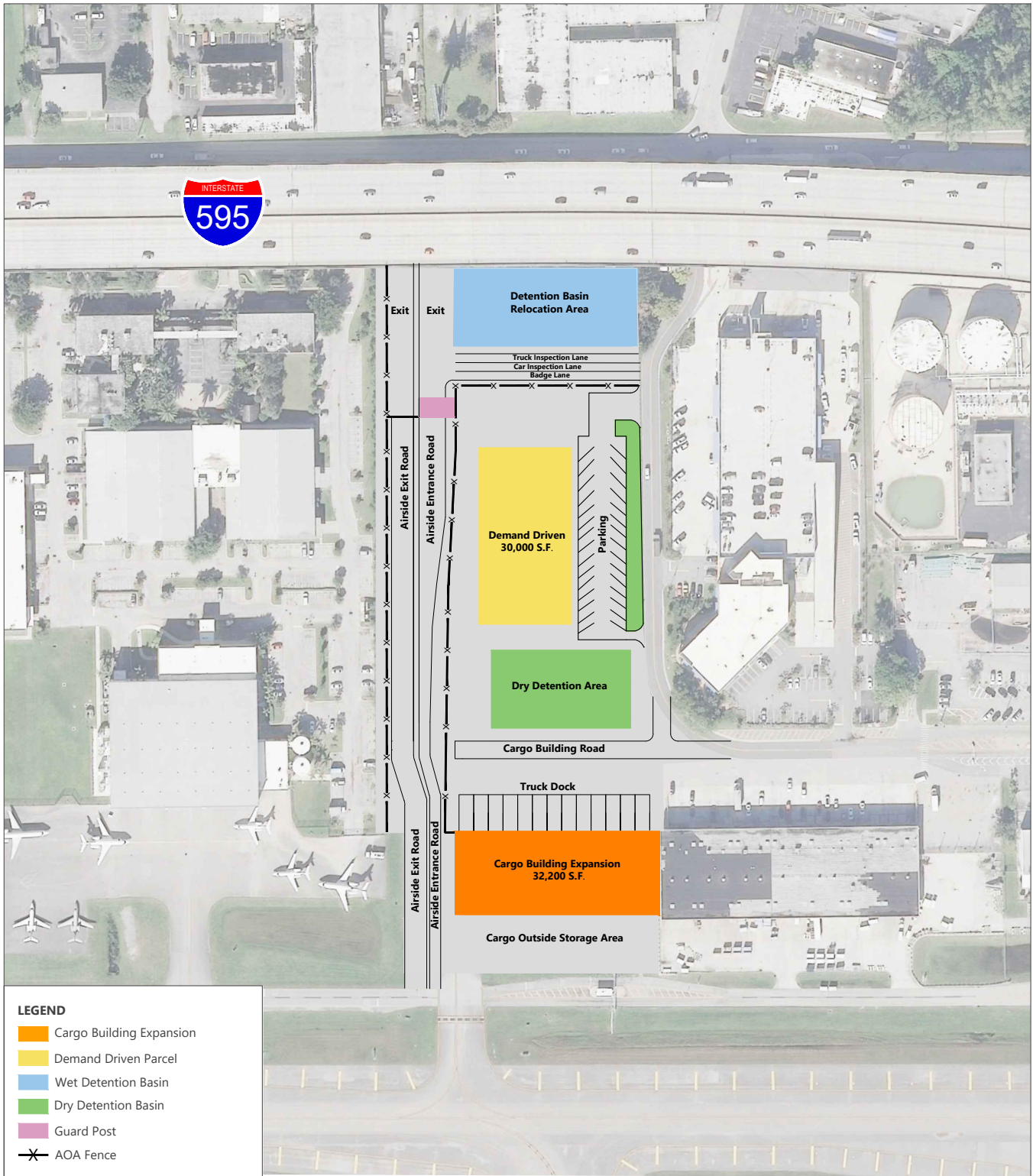


NORTH



# Cargo Alternative 1 - UPS Apron Expansion Concept

Drawing: P:\Project-Miami\BCAD\2015 Master Plan Updates\01 - FLL Tasks\III-3 Alternatives\CAD\Support Facility Alternatives\Cargo\BCAD Air Cargo Alternatives Chapter Appendix.dwg Layout: 5.6-7 Alt 1 Plotted: Nov 2, 2020, 02:40PM



SOURCE: Broward County Aviation Department, Fort Lauderdale-Hollywood International Airport, Airport Layout Plan, February 2011; Ricondo & Associates, Inc., October 2017  
 PREPARED BY: Ricondo & Associates, Inc., October 2017.

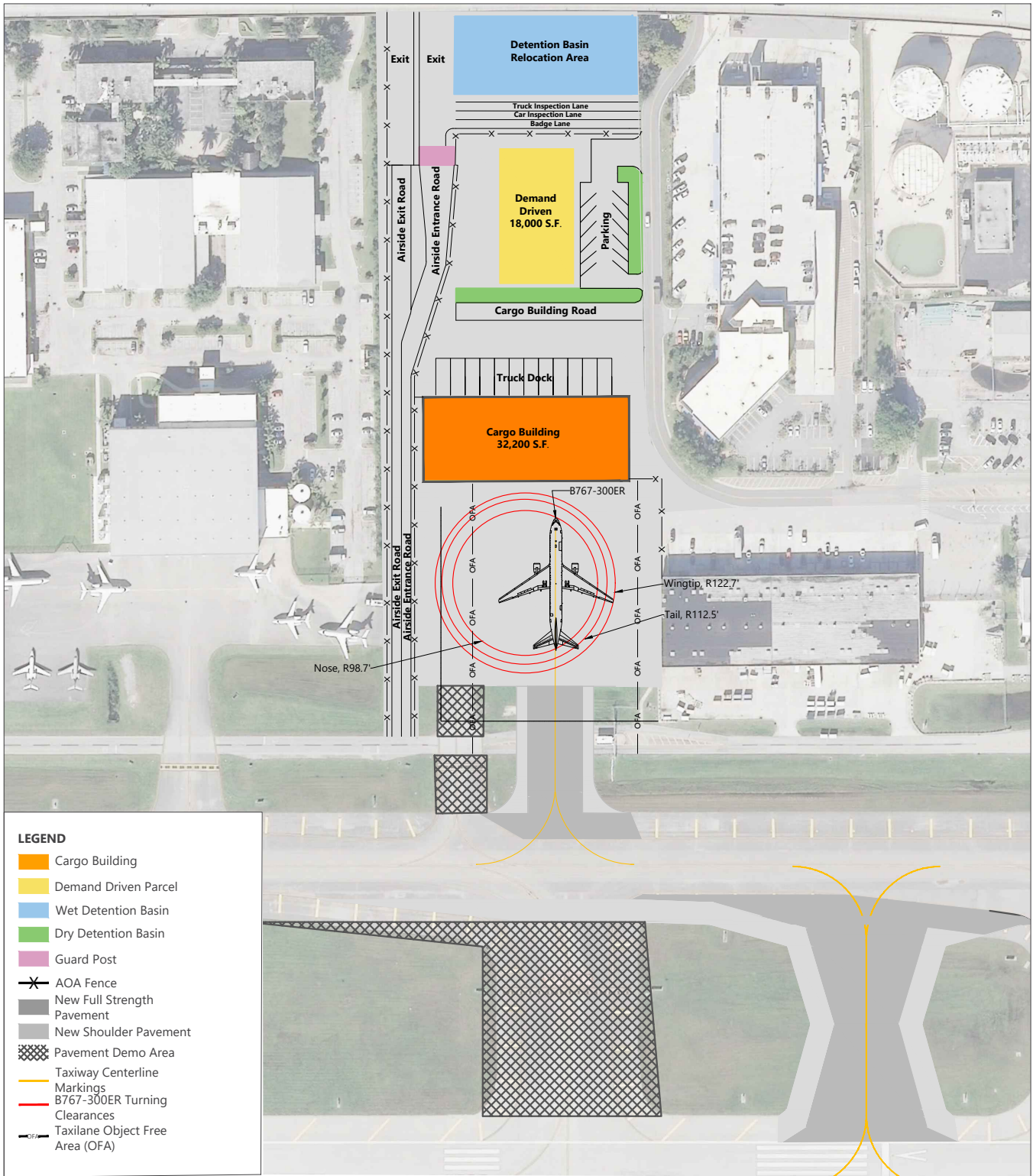
**EXHIBIT I-12**



0 200 ft.

## Cargo Alternative 2 - Belly Cargo Facility Expansion Concept

Drawing: P:\Project\Miami\BCAD\2015 Master Plan Updates\01 - FLL Tasks\III-3 Alternatives\CAD\Support Facility Alternatives\Cargo\BCAD Air Cargo Alternatives Chapter Appendix.dwg Layout: 5.6-8 Alt 2 Plotted: Nov 2, 2020, 02:42PM



SOURCE: Broward County Aviation Department, Fort Lauderdale-Hollywood International Airport, Airport Layout Plan, February 2011; Ricondo & Associates, Inc., October 2017  
 PREPARED BY: Ricondo & Associates, Inc., October 2017.

**EXHIBIT I-13**



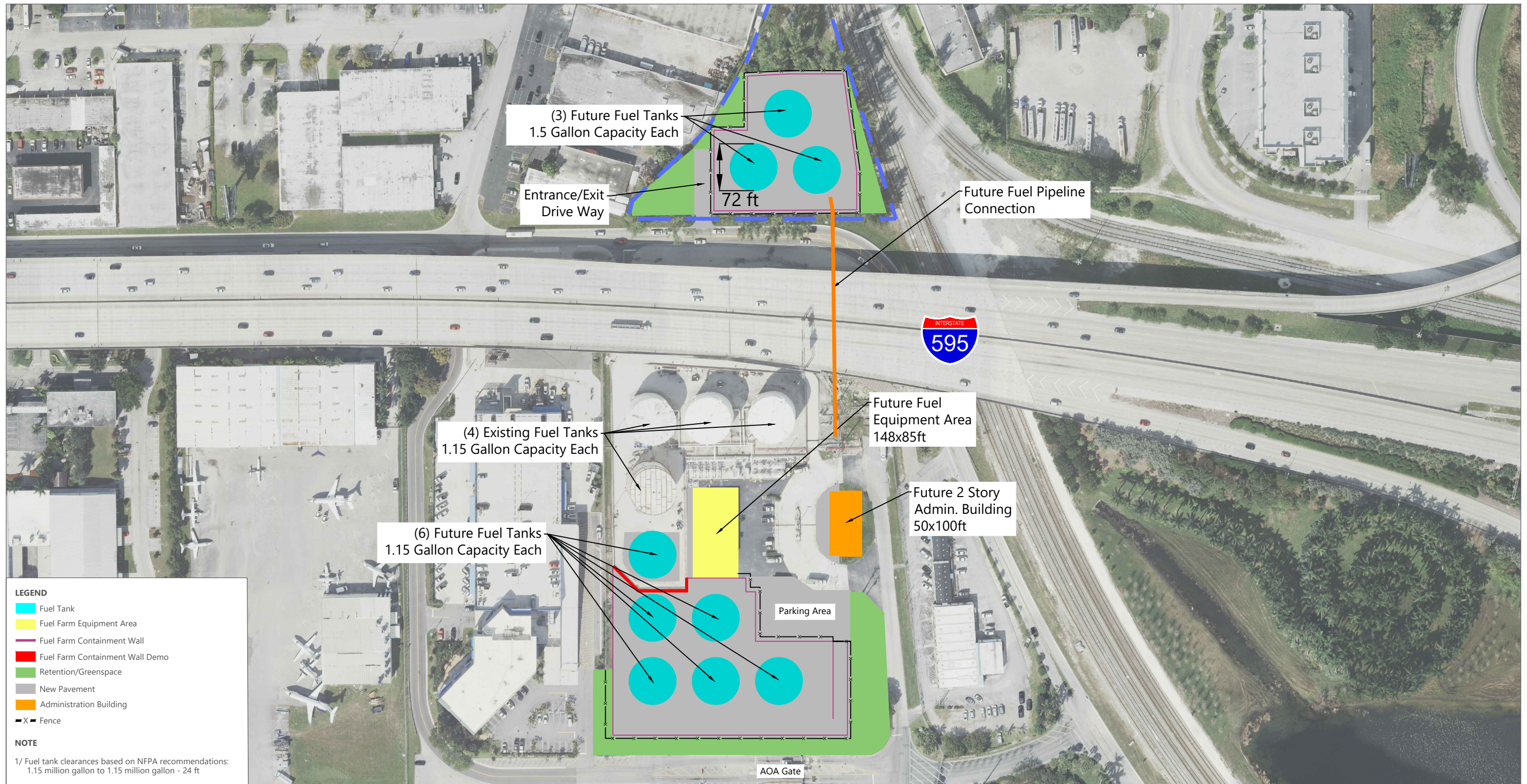
0 200 ft.

## Cargo Alternative 3 -Hybrid Belly Cargo/Air Freight Facility

Drawing: P:\Project-Miami\BCAD\2015 Master Plan Updates\01 - FLL Tasks\I-3 Alternatives\CAD\Support Facility Alternatives\Cargo\BCAD Air Cargo Alternatives Chapter Appendix.dwg Layout: 5.6-9 Alt 3 Plotted: Nov 2, 2020, 02:43PM







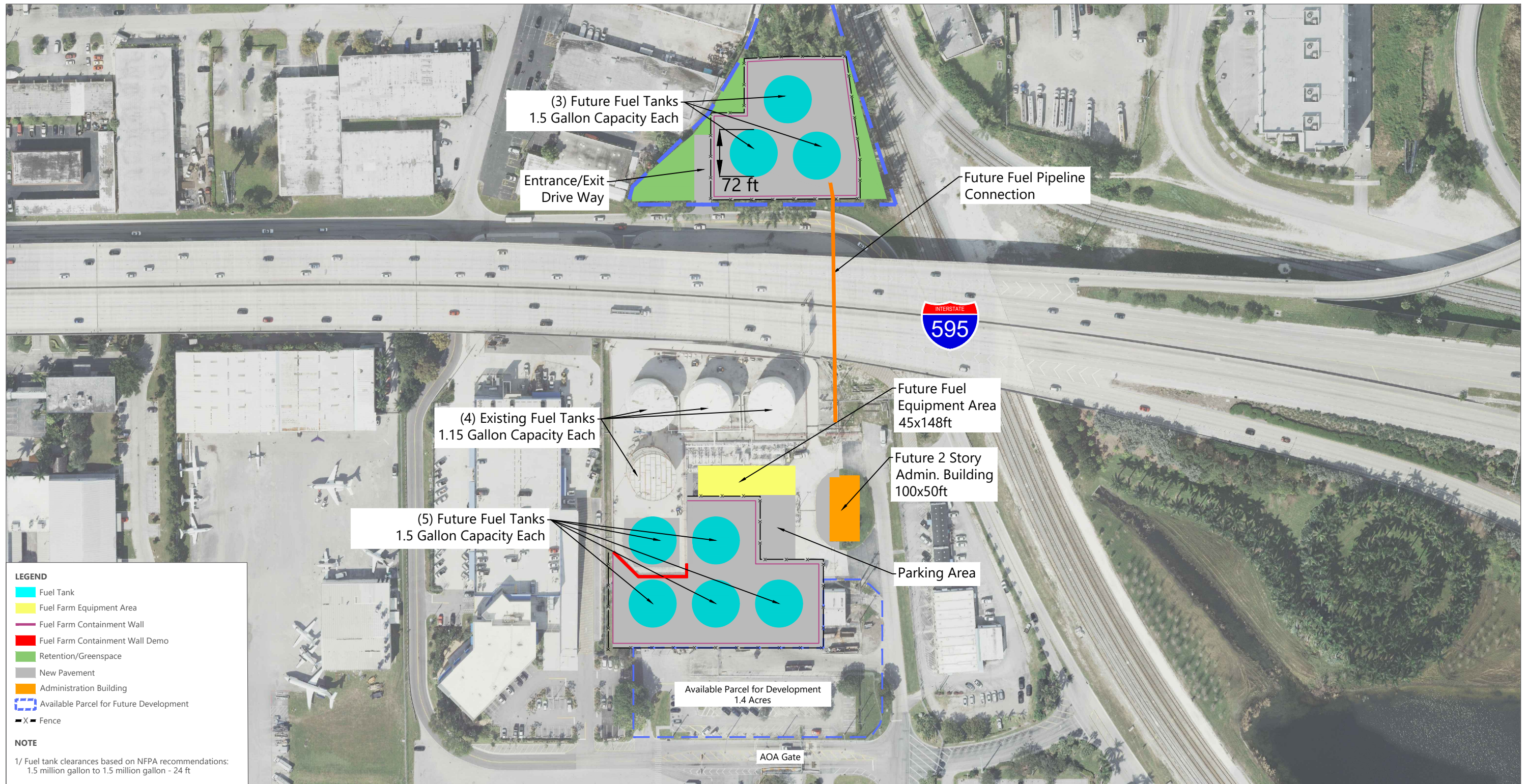
SOURCE: Quantum, 2016 (aerial photography).  
PREPARED BY: Ricondo & Associates, Inc., March 2018.

EXHIBIT I-14



Fuel Farm Expansion  
Alternative 1A - Centralized Expansion within Existing Fuel Farm Site

Drawing: P:\Project-Miami\BCAD\2015 Master Plan Updates\01 - FLL Tasks\I-3 Alternatives\CAD\Support Facility Alternatives\Fuel Farm\FLL Fuel Farm Expansion Alternative.dwg\Layout: Alt 1A - Existing Parcel Plotted: Nov 2, 2020, 02:49PM

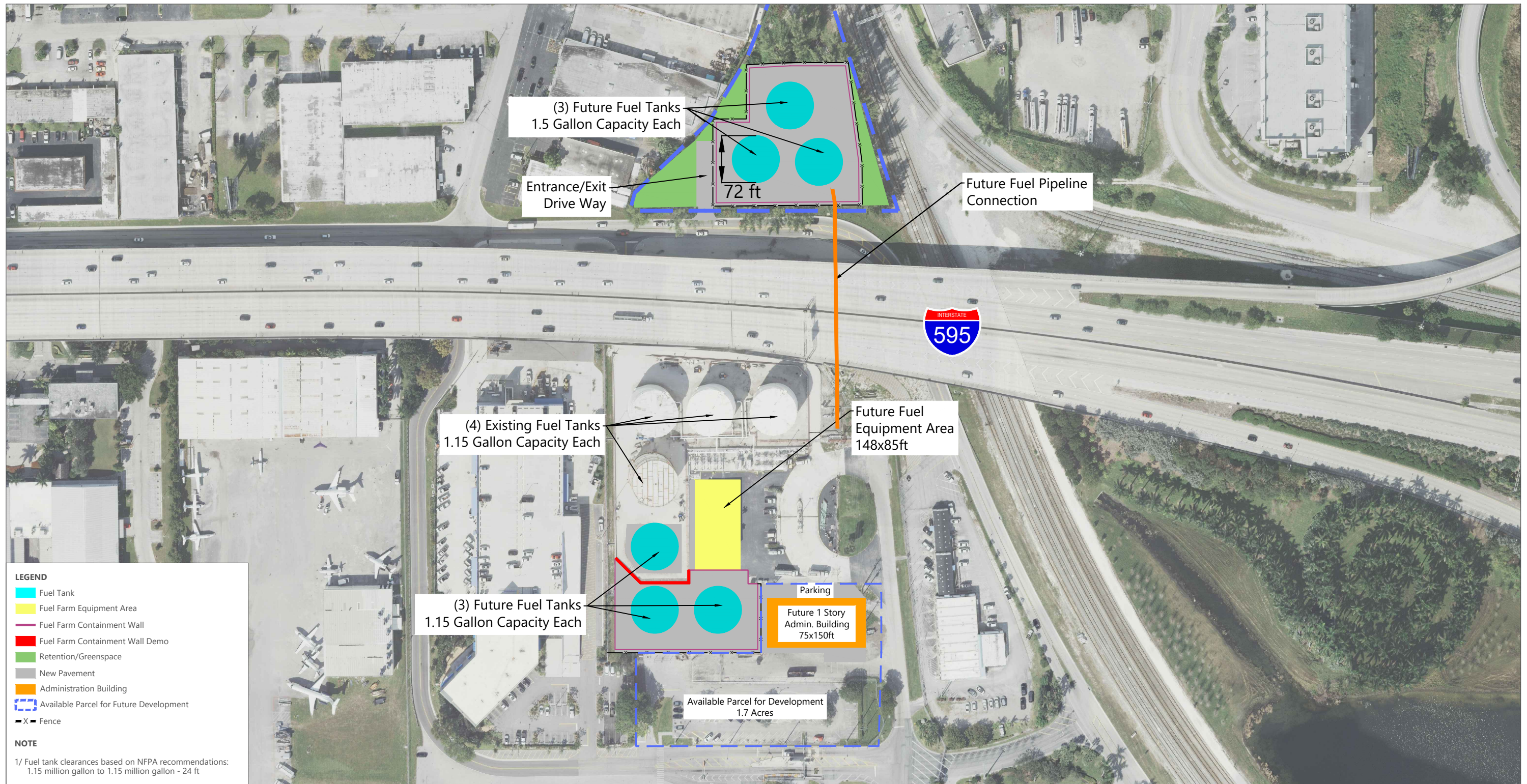


SOURCE: Quantum, 2016 (aerial photography).  
 PREPARED BY: Ricondo & Associates, Inc., March 2018.

EXHIBIT I-15



Fuel Farm Expansion  
 Alternative 1B - Centralized Expansion within Existing Fuel Farm Site



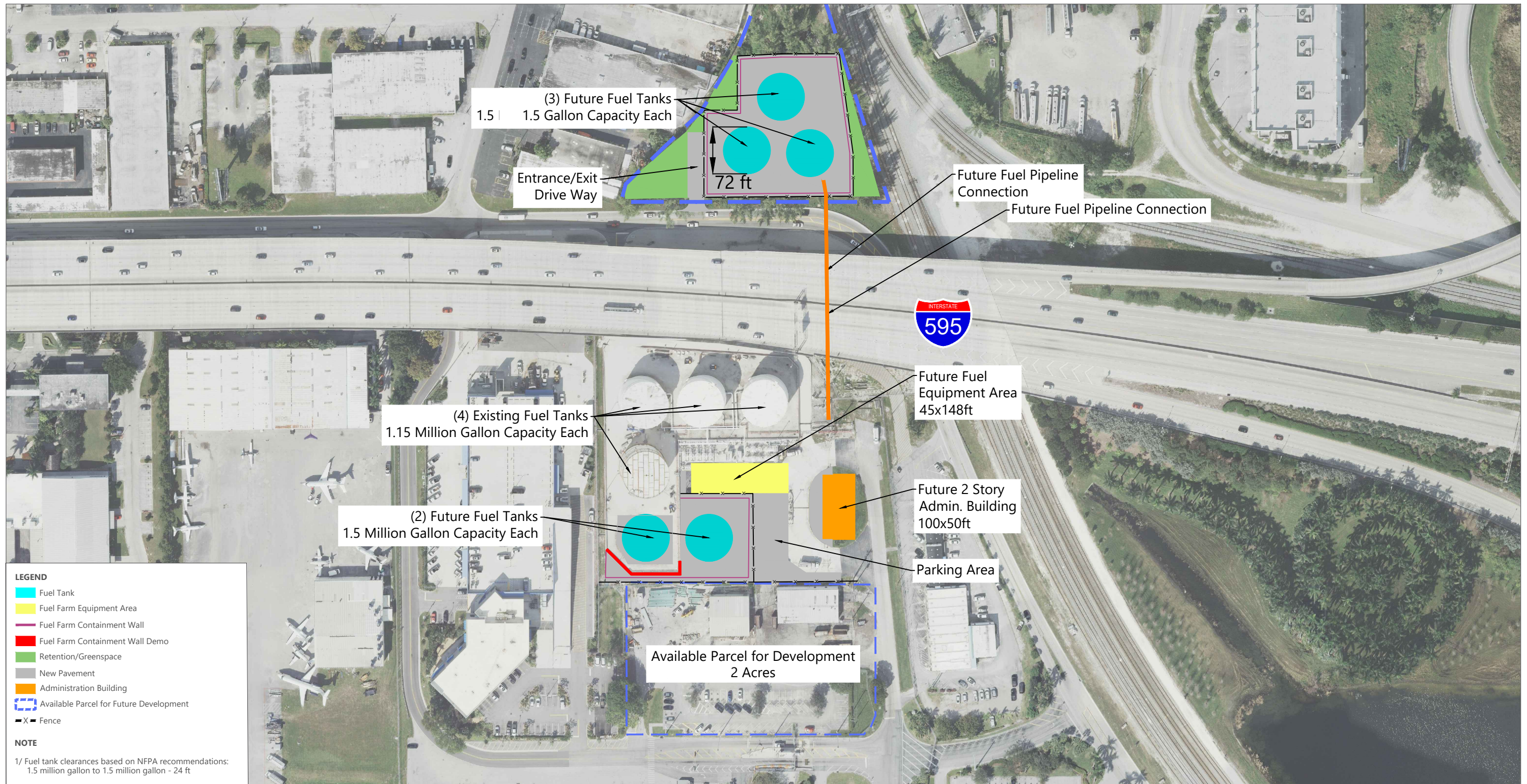
SOURCE: Quantum, 2016 (aerial photography).  
 PREPARED BY: Ricondo & Associates, Inc., March 2018.

EXHIBIT I-16



Fuel Farm Expansion  
 Alt 1C - Decentralized Fuel Farm Expansion on Broward County Triangular Parcel (Sites 1 and 2)

Drawing: P:\Project-Miami\BCAD\2015 Master Plan Updates\01 - FLL Tasks\11-3 Alternatives\CAD\Support Facility Alternatives\Fuel Farm\FLL Fuel Farm Expansion Alternative.dwg\Layout: Alt 1C - Triangular Parcel Plotted: Nov 2, 2020, 02:50PM



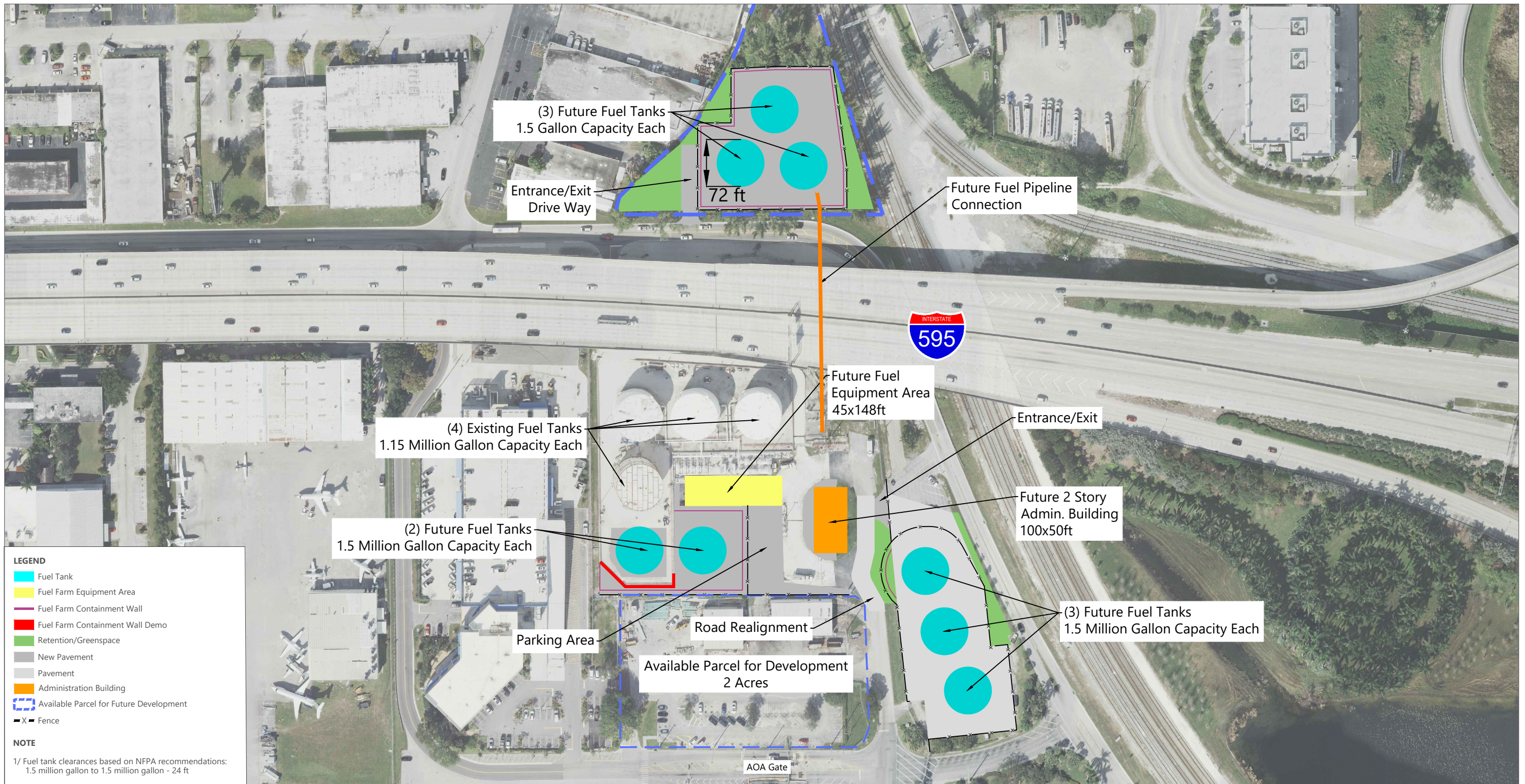
SOURCE: Quantum, 2016 (aerial photography).  
 PREPARED BY: Ricondo & Associates, Inc., March 2018.

EXHIBIT I-17



Fuel Farm Expansion  
 Alt 1D - Decentralized Fuel Farm Expansion on Broward County Triangular Parcel (Sites 1 and 2)

Drawing: P:\Project-Miami\BCAD\2015 Master Plan Updates\01 - FLL Tasks\11-3 Alternatives\CAD\Support Facility Alternatives\Fuel Farm\FLL Fuel Farm Expansion Alternative.dwg\Layout: Alt 1D - Triangular Parcel Plotted: Nov 2, 2020, 02:51PM



SOURCE: Quantum, 2016 (aerial photography).  
 PREPARED BY: Ricondo & Associates, Inc., March 2018.

EXHIBIT I-18



Fuel Farm Expansion  
 Alternative 1E - Decentralized Expansion in Site Adjacent to Existing Fuel Farm Site

Drawing: P:\Project-Miami\BCAD\2015 Master Plan Updates\01 - FLL Tasks\I-3 Alternatives\CAD\Support Facility Alternatives\Fuel Farm\FLL Fuel Farm Expansion Alternative.dwg\Layout: Alt 1E - Existing Parcel Plotted: Nov 2, 2020, 02:51PM

# Existing Fuel Farm Expansion



**LEGEND**

- Future Fuel Tank
- Optional Future Fuel Tank
- Fuel Farm Equipment Area
- Fuel Farm Containment Wall
- - - Fuel Farm Containment Wall Needed for Optional Fuel Tank Development
- Retention/Greenspace
- New Pavement
- Administration Building
- Available Parcel for Future Development
- X — Fence

**NOTE**

1/ Fuel tank clearances based on NFPA recommendations:  
 1.15 - 1.5 million gallon to 1.15 - 1.5 million gallon - 24 ft

# Development to Meet Storage Requirements

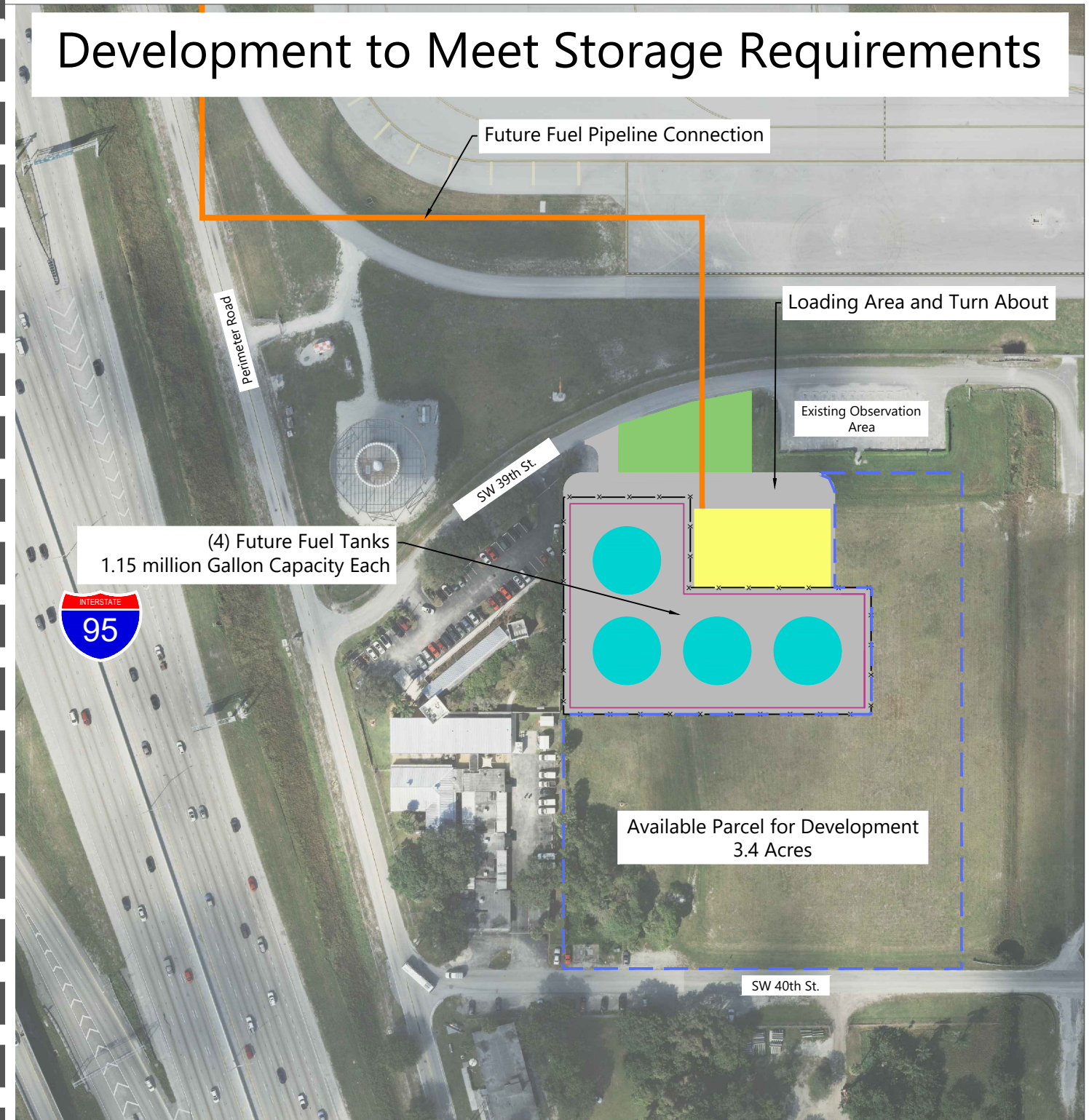
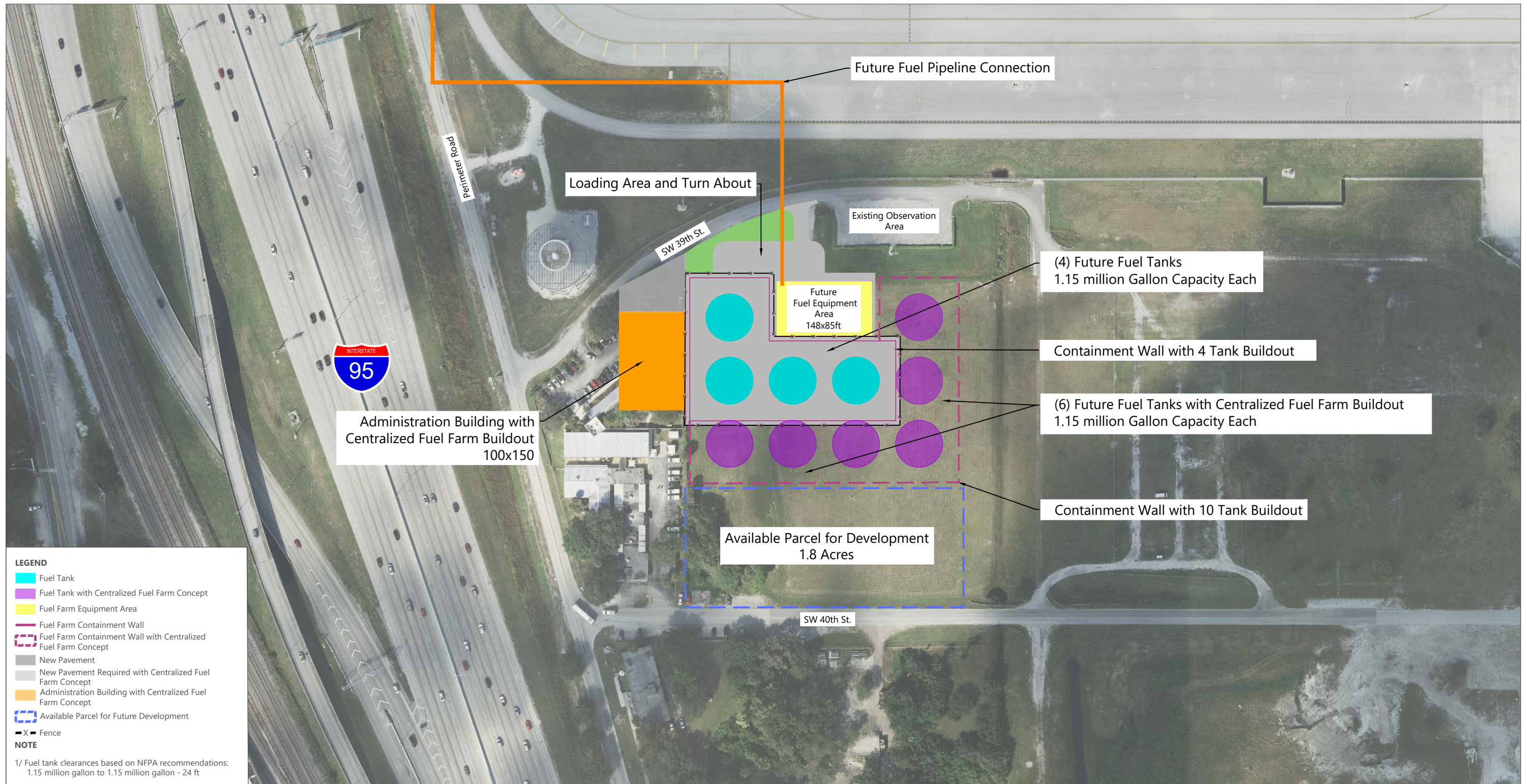


EXHIBIT I-19

SOURCE: Quantum, 2016 (aerial photography).  
 PREPARED BY: Ricondo & Associates, Inc., March 2018.



Drawing: P:\Project-Miami\BCAD\2015 Master Plan Updates\01 - FLL Tasks\I-3 Alternatives\CAD\Support Facility Alternatives\Fuel Farm\FLL Fuel Farm Expansion Alternative.dwg\Layout: Alt 3A - Parcel 15 Plotted: Nov 2, 2020, 02:52PM



**LEGEND**

- Fuel Tank
- Fuel Tank with Centralized Fuel Farm Concept
- Fuel Farm Equipment Area
- Fuel Farm Containment Wall
- Fuel Farm Containment Wall with Centralized Fuel Farm Concept
- New Pavement
- New Pavement Required with Centralized Fuel Farm Concept
- Administration Building with Centralized Fuel Farm Concept
- Available Parcel for Future Development
- Fence

**NOTE**

1/ Fuel tank clearances based on NFPA recommendations: 1.15 million gallon to 1.15 million gallon - 24 ft

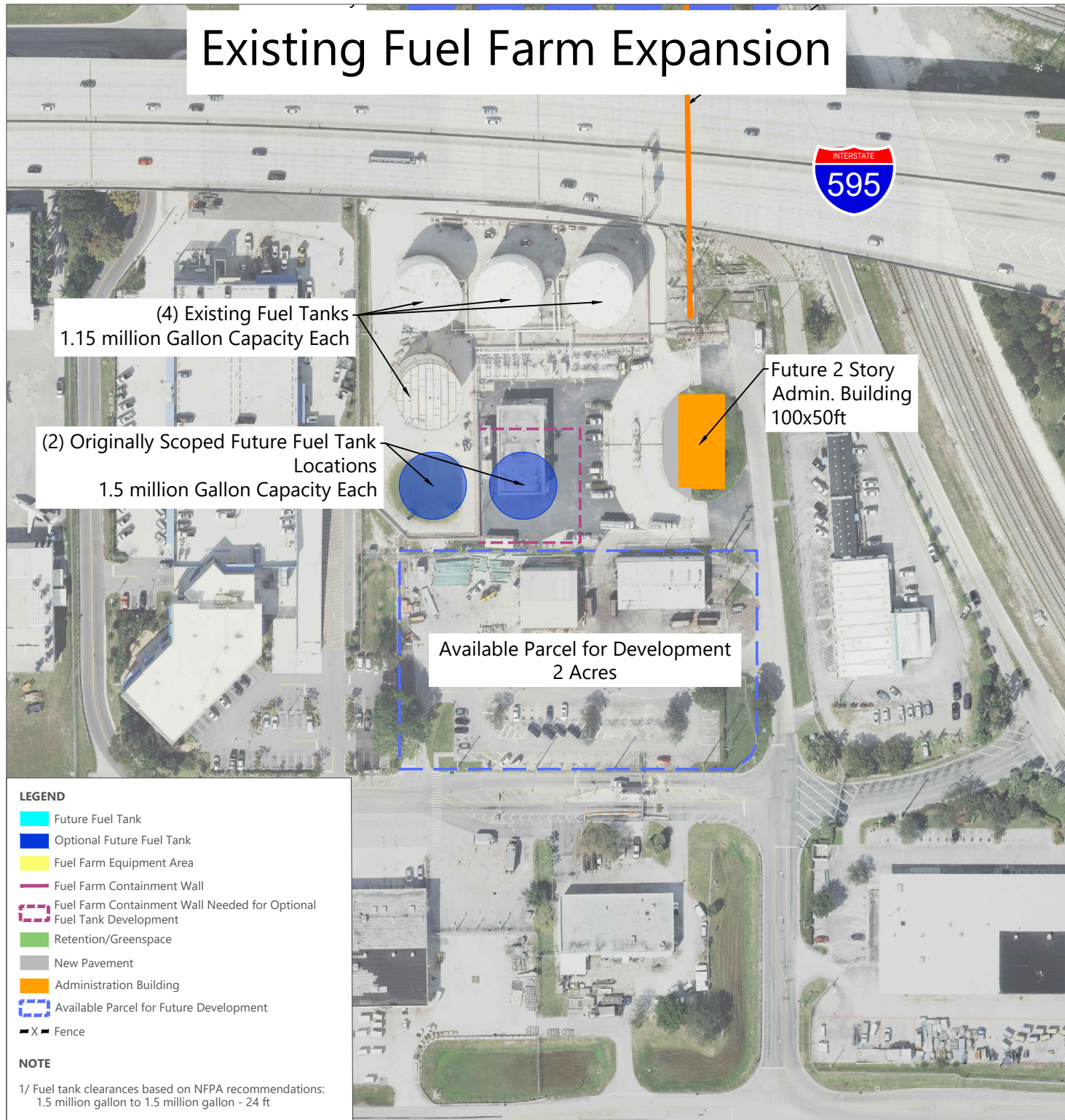
SOURCE: Quantum, 2016 (aerial photography).  
 PREPARED BY: Ricondo & Associates, Inc., March 2018.

EXHIBIT I-20



Fuel Farm Expansion  
 Alt 2B - Centralized Fuel Farm Expansion on Parcel 15 (Site 4)

# Existing Fuel Farm Expansion



# Development to Meet Storage Requirements

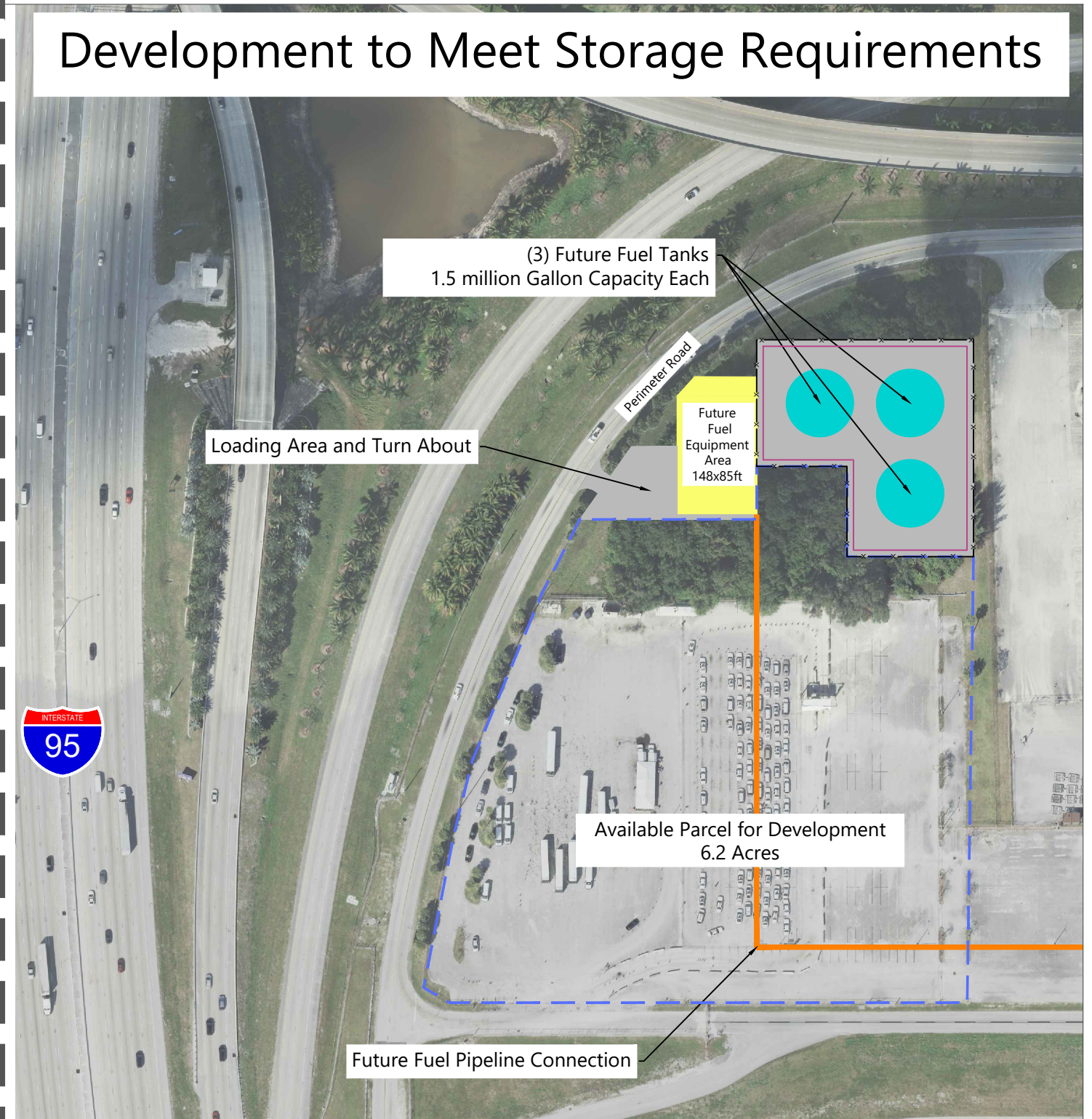


EXHIBIT I-21

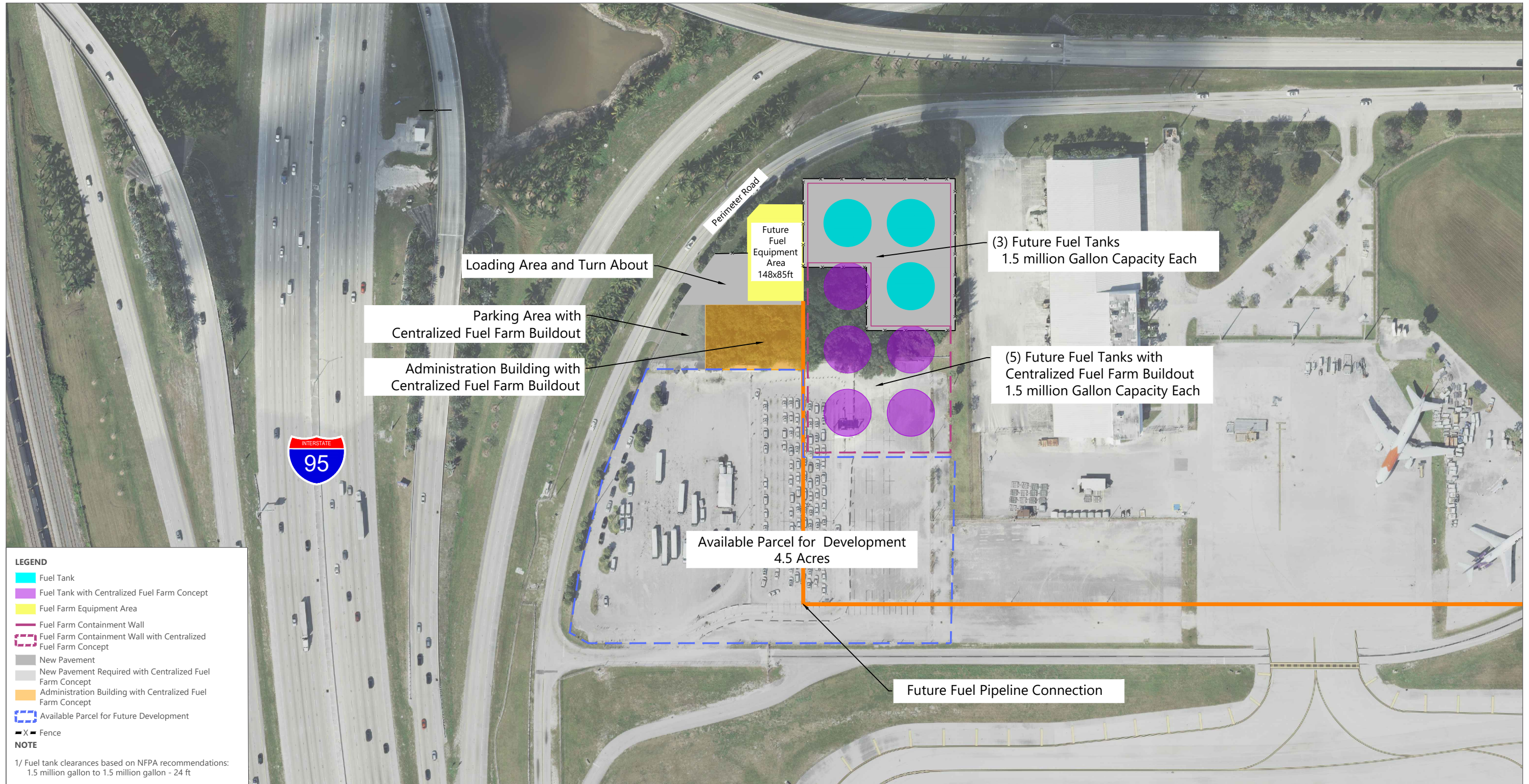
Fuel Farm Expansion  
 Alt 3A - Decentralized Fuel Farm Expansion on Parcel 5 (Sites 1 and 5)

SOURCE: Quantum, 2016 (aerial photography).  
 PREPARED BY: Ricondo & Associates, Inc., March 2018.



Drawing: P:\Project-Miami\BCAD\2015 Master Plan Updates\01 - FLL Tasks\I-3 Alternatives\CAD\Support Facility Alternatives\Fuel Farm\FLL Fuel Farm Expansion Alternative.dwg; Layout: Alt 4A - Parcel 5 Plotted: Nov 2, 2020, 02:53PM





**LEGEND**

- Fuel Tank
- Fuel Tank with Centralized Fuel Farm Concept
- Fuel Farm Equipment Area
- Fuel Farm Containment Wall
- Fuel Farm Containment Wall with Centralized Fuel Farm Concept
- New Pavement
- New Pavement Required with Centralized Fuel Farm Concept
- Administration Building with Centralized Fuel Farm Concept
- Available Parcel for Future Development
- Fence

**NOTE**

1/ Fuel tank clearances based on NFPA recommendations: 1.5 million gallon to 1.5 million gallon - 24 ft

SOURCE: Quantum, 2016 (aerial photography).  
 PREPARED BY: Ricondo & Associates, Inc., March 2018.

**EXHIBIT I-22**



**Fuel Farm Expansion**  
**Alt 3B - Centralized Fuel Farm Expansion on Parcel 5 (Site 5)**

