

## Welcome to NewsFLLash Issue #31

In this edition: Colorful text-based abstract paintings on display in the Terminal 2 Art Gallery until June, print copies of the 2021 Annual Report now available, FLL is recruiting community volunteers for multiple airport programs, and more.



**Mark E. Gale**  
CEO/Director of Aviation  
Fort Lauderdale-Hollywood  
International Airport (FLL)

## A Message From the CEO

With January now behind us and the new year fully underway, we are excited about what lies ahead in the coming months, including enhancements to airport facilities, infrastructure, and services, among other key events.

During the first quarter, we expect several new flights to take off, including from airlines such as Spirit (Norfolk, VA, and San Antonio, TX) and Avelo (Raleigh-Durham, NC, and Niagara Falls, NY). In addition, we anticipate sharing some big news on the arrival of a new international carrier soon. In the meantime, AZUL plans to resume flights to Recife, Brazil, suspended during the pandemic's peak.

Last year, FLL served approximately 31.7 million travelers, an increase of 12.8 percent from 28.1 million visitors in 2021. Pre-pandemic, the airport welcomed a record 36.7 million passengers in 2019. As of November 2022, the latest data available, overall passenger traffic was 89% of 2019 levels.

A significant highlight of 2022 was the arrival of Norse Atlantic Airways with transatlantic service to Oslo, Norway, in June and Berlin, Germany, in December. We look forward to expanding our global route map in 2023 with potentially more sought-after international destinations.

FLL added several new concessions in 2022, including EVOLVE by Hudson, Runway, PGA Tour Fan Shop, SPANX, and Hip & Humble. Additionally, a new Escape Lounges - The Centurion Studio Partner, opened in Terminal 3, marking the airport's first non-airline affiliated "common-use" lounge.

For sure, FLL is nearing pre-pandemic travel activity, and we look forward to achieving new business milestones this year.

*Mark*

**In This Issue:**

- A Message From the CEO
- The Sky's the Limit
- Abstract Artwork Exhibit
- Annual Report 2021
- Airport Ambassadors Wanted
- Dining Venues on Tap
- Traveling With a Firearm
- Get REAL ID Ready
- FLL by the Numbers
- Top 10 Airline Market Share
- Stay Connected

[FLL.net](https://www.fll.net)

[Contact Us](#)

[Subscribe Now](#)



## The Sky's the Limit

### December passenger traffic recap

Airport Statistics	Current Month	2021 Month	Year-Over-Year Difference	2019 Month
Total Passengers	3,022,463	2,603,987	16%	3,520,779
Domestic Passengers	2,314,067	2,121,583	9%	2,677,356
International Passengers	708,396	482,404	47%	843,423

[View FLL Statistics](#)



## **Abstract Artwork Exhibit**

### **Art depicts layered short phrases**

The newest exhibit in the Terminal 2 Art Gallery, [Evidence of Things Unseen](#),<sup>™</sup> by artist Daniel Marosi, is on display post security in Concourse D until June. Stop by and enjoy these contemporary colorful abstract works of art when next you're flying through this terminal. A special thank you to the FLL Maintenance Team members (pictured in the top banner image with Marosi) for their assistance with this art installation.



## Annual Report 2021

### Colorful, attractive design elements

The third rendition of the Aviation Department's signature year-in-review publication is now available in print and [online](#). The 2021 Annual Report showcases key events, projects, and milestones accomplished during the year at our two airports, FLL and North Perry Airport, a general aviation reliever facility in Pembroke Pines.



## Airport Ambassadors Wanted

### Ongoing recruitment for volunteers

Airport Ambassadors are goodwill diplomats making a positive impression on the millions of passengers traveling annually through FLL. Volunteers are a vital part of the Aviation Department's commitment to SUNsational customer service.

In addition to ambassadors outfitted in red polo or jackets, members of the [FLLAmbassaDogs](#) and Americans with Disabilities Act Access Committee programs are also valued volunteers. And we'd love to have more new members join all three programs.

For more information, or to apply to become an Airport Ambassador, visit the Community section of [fll.net](http://fll.net).



## **Dining Venues on Tap**

### **More retail shops also on the horizon**

A Bonefish Grill restaurant is earmarked for Terminal 3 and could potentially join the list of open dining venues serving guests traveling to/from Concourses E and F by summertime.

Additionally, a new Food Court is slated to open in Concourse E by the end of the year featuring popular brands such as Dunkin, Pollo Tropical, and Burger Fi. Stay tuned for more updates on this new food venue in the coming months.

On the retail side, MAC Cosmetics plans to expand its footprint at FLL by March with a new store in Terminal 3, Concourse F, adding to its existing Terminal 1 shop.

### **[Dine & Shop Directory](#)**

# WEAPONS & TRAVEL DO NOT MIX.



FLL is committed to providing guests with a safe travel experience through the enforcement of our gun-free protocol.



Stay in the know at [SafetyFirst.FLL.net](http://SafetyFirst.FLL.net)

## Traveling with a Firearm?

### Do it the right way

Did you know that if caught with a weapon while going through the Transportation Security Administration (TSA) passenger screening checkpoints, even if you have a concealed weapons permit, your travel plans will be interrupted?

TSA penalties for firearms may cost more than \$10,000, as well as an arrest. Watch the TSA's "[Traveling with Firearms](#)" video to learn more.

If you plan to travel with a licensed firearm, the TSA says it should be unloaded, packed in a special locked container, declared with your airline, and transported as checked luggage.



BE **REAL ID** READY!

Deadline: May 7, 2025

Get REAL ID Ready

Deadline extended until 2025

Find out more at

## FLL BY THE NUMBERS: DECEMBER 2022

TOTAL TRAFFIC WAS  
**3,022,463**

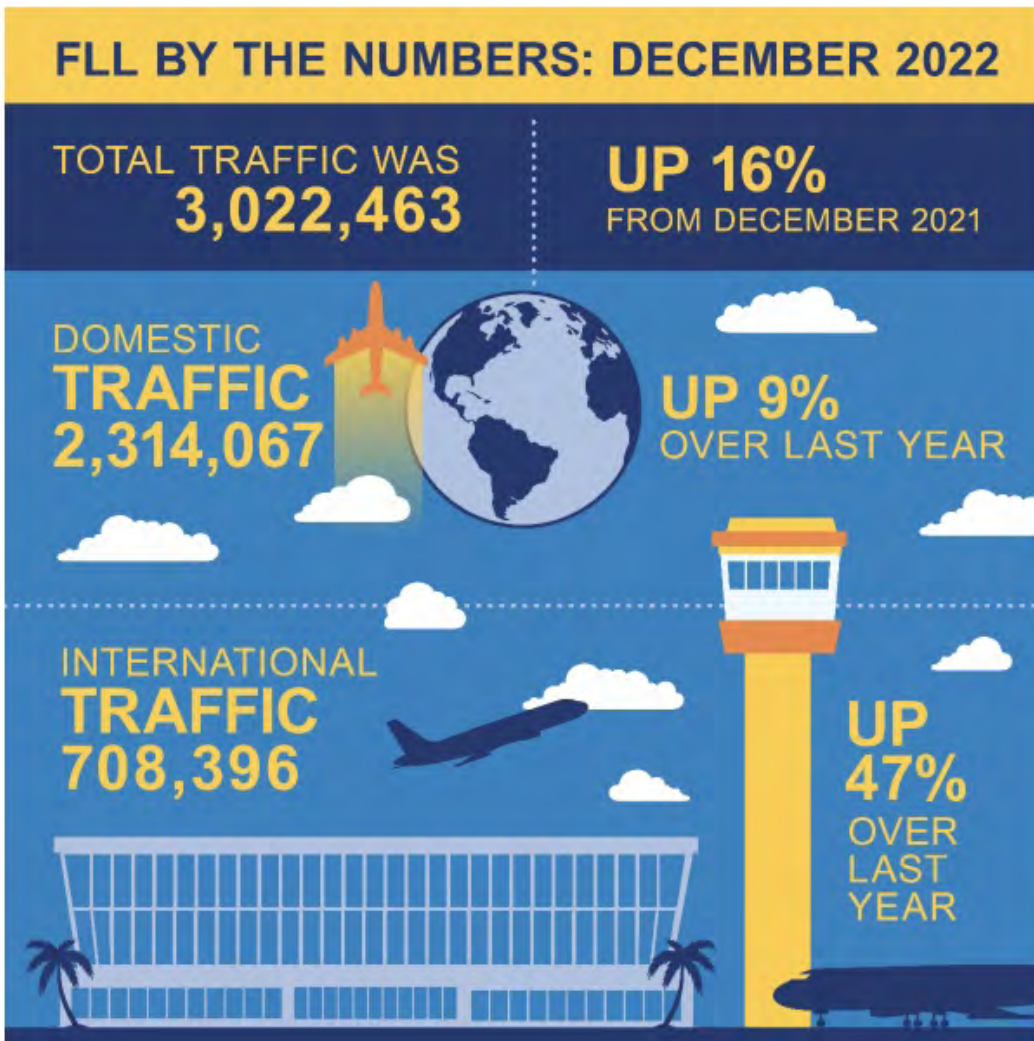
**UP 16%**  
FROM DECEMBER 2021

DOMESTIC  
TRAFFIC  
**2,314,067**

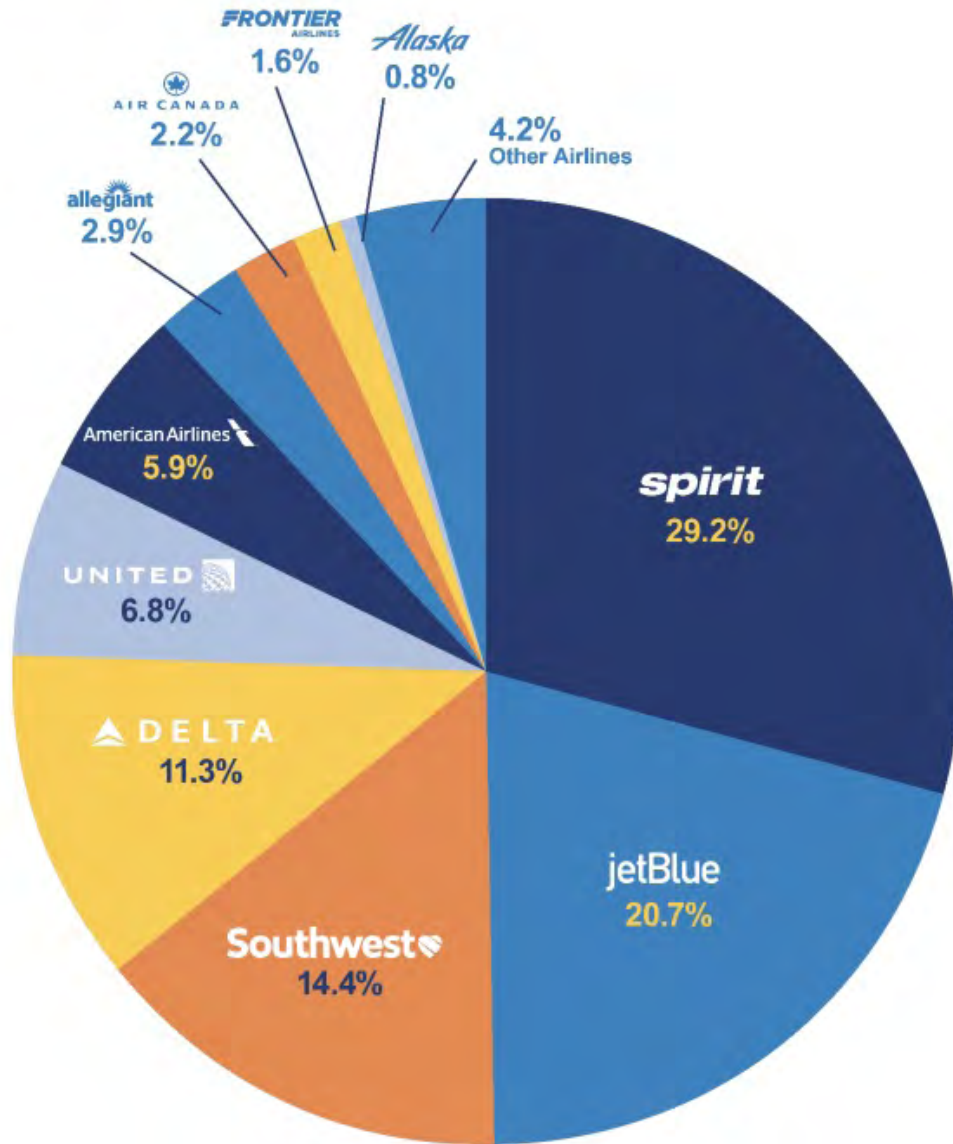
**UP 9%**  
OVER LAST YEAR

INTERNATIONAL  
TRAFFIC  
**708,396**

**UP 47%**  
OVER  
LAST  
YEAR



## Top 10 Airline Market Share Year-to-date: December 2022



# FLL's eNewsletter

Read the latest airport developments in *NewsFLLash*, the official newsletter of Broward County's Fort Lauderdale-Hollywood International Airport.

Subscribe Here:  
[Broward.org/Airport/Business](http://Broward.org/Airport/Business)

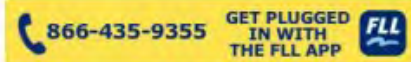


## Stay Connected

### Subscribe to NewsFLLash

In each issue of NewsFLLash, our goal is to share the latest news on airport developments, improvements, and key employee accomplishments in a mobile-friendly, easy-to-read format. We encourage you to sign up for NewsFLLash and stay connected. We know you'll enjoy it.

### [Subscribe Now](#)



Fort Lauderdale-Hollywood International Airport | 100 Terminal Dr., Ft. Lauderdale, FL 33315

[Unsubscribe \[unsubscribe@welcometoaqua.com\]\(mailto:unsubscribe@welcometoaqua.com\)](mailto:unsubscribe@welcometoaqua.com)

[Update Profile](#) | [Constant Contact Data Notice](#)

Sent by [byfillnews@broward.org](mailto:byfillnews@broward.org) powered by



Try email marketing for free today!