

Port Everglades Sand Bypass Project



If you have any questions about the Sand Bypass Project please contact Jacob Rice at jrice@broward.org.



After years of planning and coordination Broward County celebrates the beginning of construction of the Port Everglades Sand Bypass Project.

SUMMARY

The Port Everglades Sand Bypass Project provides a sustainable strategy for beach renourishment, with a renewable local source of sand. The project includes construction of a sand trap on the north side of the Port inlet to collect sand that would otherwise be lost to erosion, and offshore transport. Accumulated sand can be then harvested for placement on the beach to the south, providing 50% of sand needed for nourishment. Sand placement events are expected every 4 years south of the inlet on average.

COMMUNITY OUTREACH AND COORDINATION

Broward County will host a public webinar on Thursday, June 6th at 7pm EST. to present the project and share what to expect during and post construction. County staff will also be available at later dates to provide additional civic presentations, as requested.

Join the meeting via zoom: bit.ly/SandBypass (passcode 242284). The Sand Bypass Project website will be updated throughout the project duration with additional details and can be found at Broward.org/Beaches

LOCATION

The Project is located north of the jetty of Port Everglades and in the immediate nearshore waters.

PROJECT PERMITS:

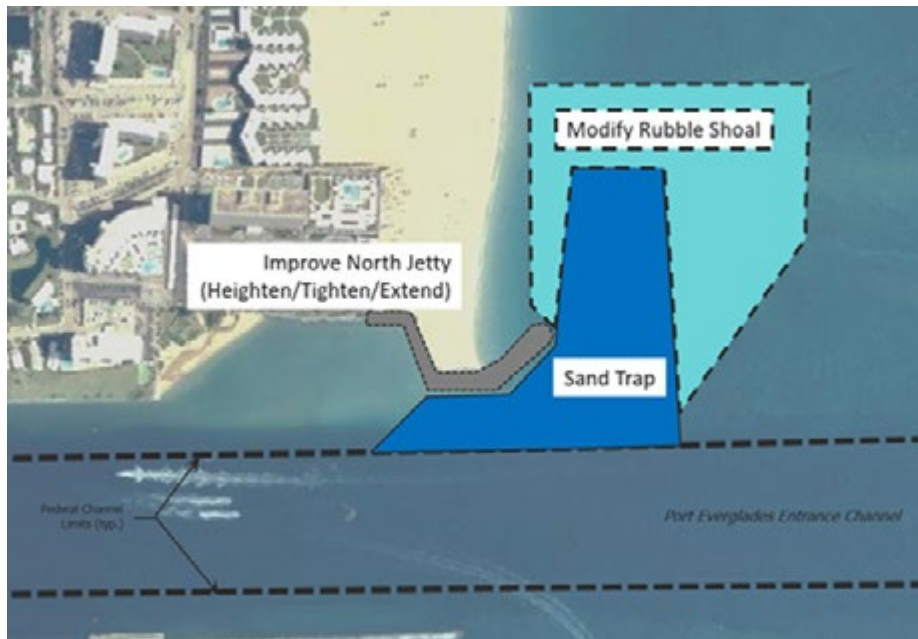
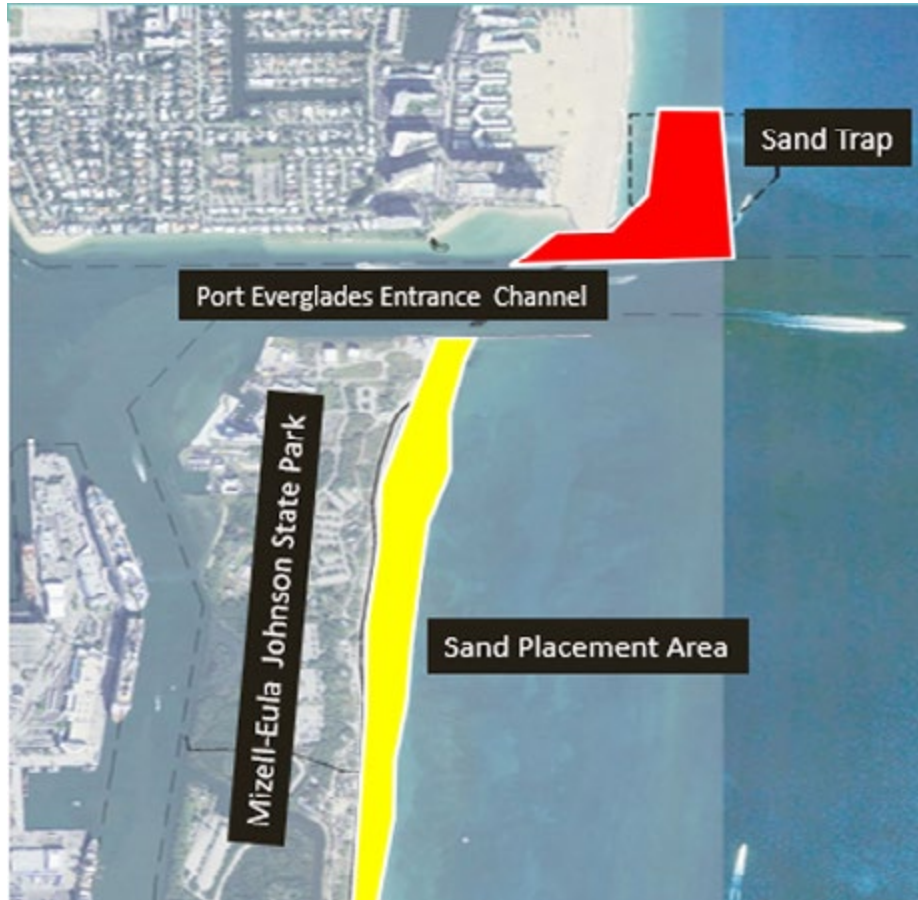
- FDEP permit: 0289308-004-JC
- U.S. Army Corps of Engineers: SAJ-2008-02034

PROJECT TIMELINE

*Dredging pauses from July-September for coral spawning




PROJECT OVERVIEW




 facebook.com/browardresilience

 instagram.com/browardresilience

 LinkedIn.com/browardresilience

 Phone : 954-519-1270

 resilience@broward.org

 115 S. Andrews Ave., Room 329H, Fort Lauderdale, Florida 33301



RESILIENT
ENVIRONMENT