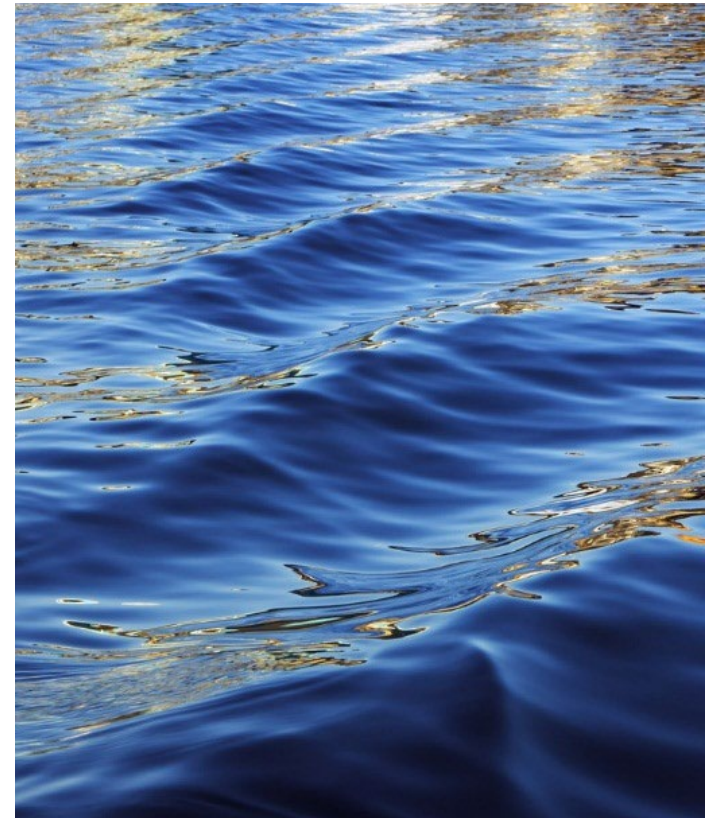


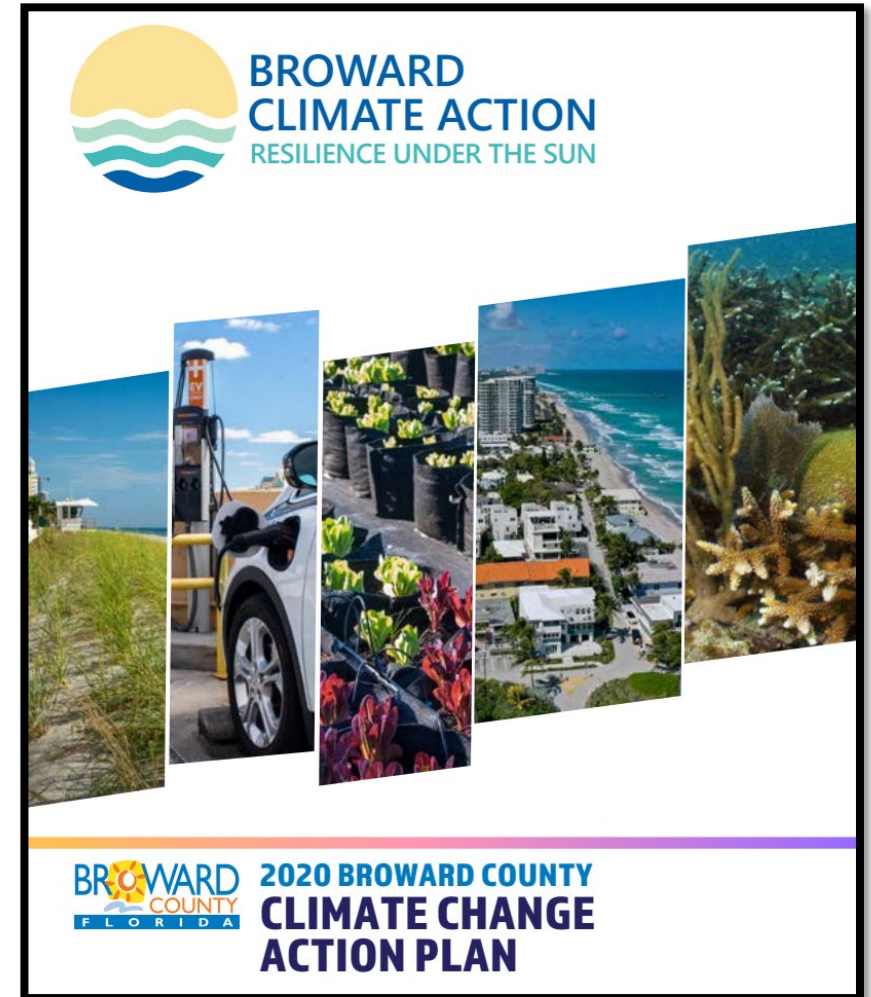
2020 Climate Change Action Plan - Update

Monica Pognon – Director, Natural Resources Division
Climate Change Taskforce Meeting
August 3, 2023



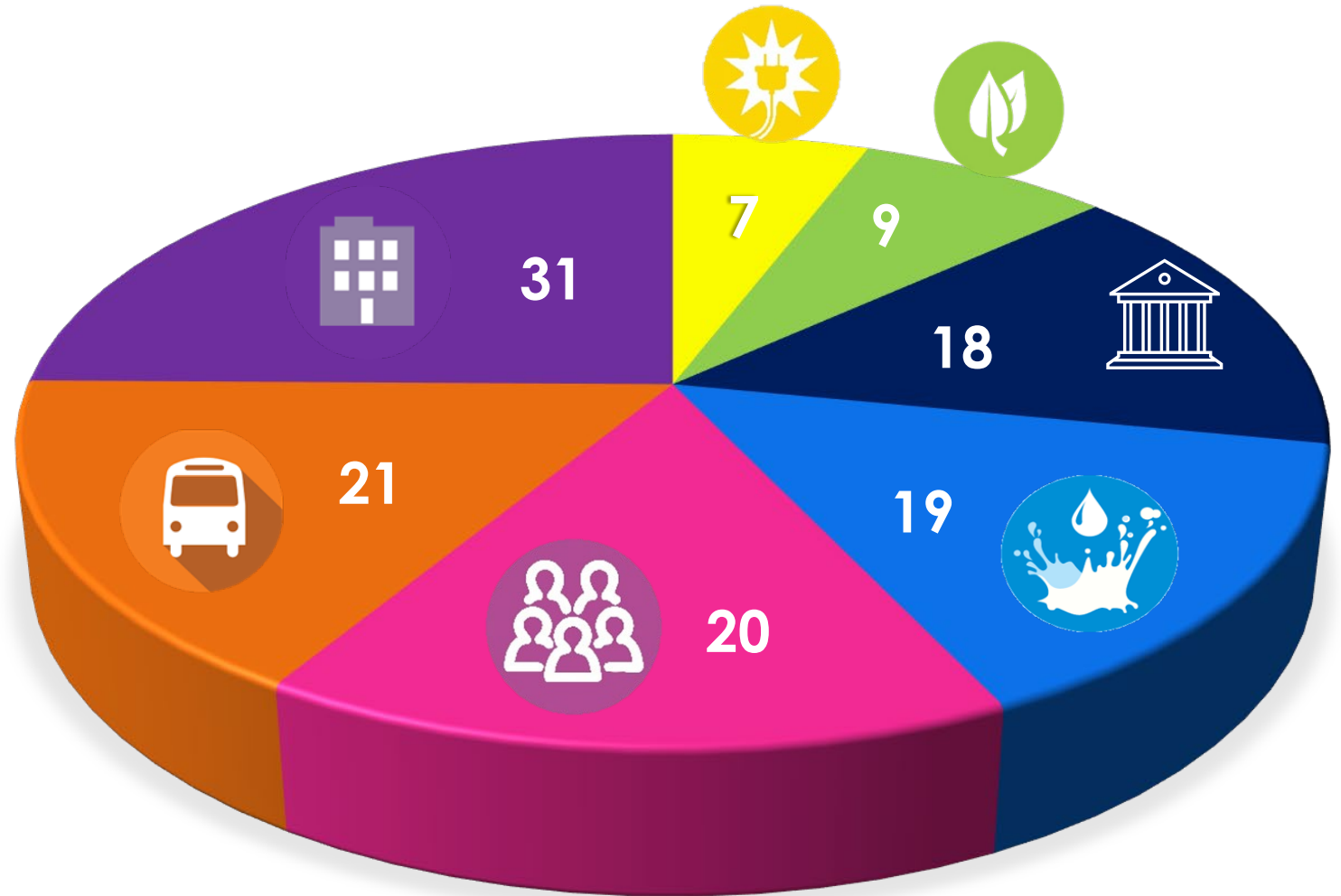
Agenda

- Overview of the 2020 Climate Change Actions (CCAP)
- Highlights from CCAP
- Notable advancement /Priorities for 2020 CCAP
- Moving forward 2020 CCAP to formulating the 2025 CCAP



2020 Climate Change Action Plan Categories

-  Policy
-  Healthy Community
-  Transportation
-  Built Environment
-  Energy Resources
-  Natural Systems
-  Water Resources



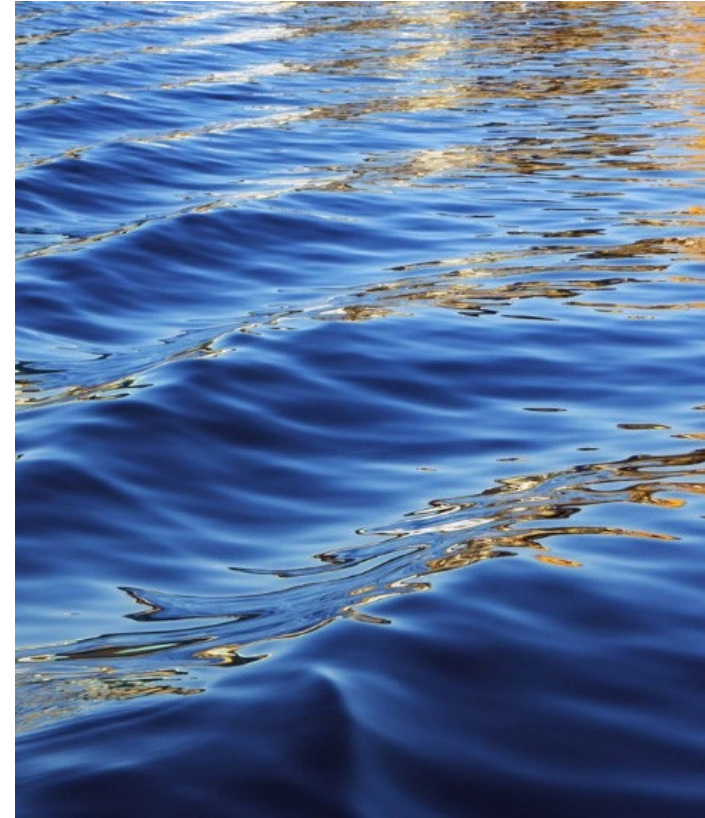
Goals

An infographic on a white background with a green border. It features two large arrows. The left arrow is orange and points downwards, containing the text "80% EMISSIONS REDUCTION BY 2050" and "10% BY 2020" at the top, and a circular icon with "CO₂" at the bottom. The right arrow is purple and points upwards, containing a circular icon with a house and waves at the top, and the text "INCREASE CLIMATE RESILIENCE" at the bottom.

80%
EMISSIONS
REDUCTION
BY 2050
10% BY 2020

CO₂

**INCREASE
CLIMATE
RESILIENCE**





Policy

- The actions under Policy advocate for public policies supporting regional resilience and for the advancement of transformative policy changes which will reduce emissions, build climate resilience, and align government objectives and partners including community, industry, research institutions and other.
- Objective : Enact policies and legislation to reduce emissions from transportation, buildings and increase community resilience through adaptation.



Highlights – Policy

BROWARD COUNTY NOTICE
EFFECTIVE JUNE 1, 2022:
NEW POLICY

Prohibited from County Property and County Facilities:

- Polystyrene foam foodware (clamshell containers, cups, plates, bowls)
- Unencapsulated polystyrene foam products (coolers, ice chests, beach/pool toys)
- Plastic straws and stirrers
- Confetti and sky lanterns



What you can use:

- Alternative straws (metal, bamboo, silicone, paper, etc)
- Paper/plastic disposable cups
- Pre-packaged food (delivered to the food store in polystyrene/with plastic straws) is exempt.
- Pre-packaged raw meats in polystyrene is exempt

BROWARD.ORG/NATURALRESOURCES



- RCAP 3.0
- Administrative code - Prohibit use of Polystyrene and Plastics on County Property
- Southeast Florida Regional Climate Change Summit

SINGLE-USE ITEMS



REUSABLE ALTERNATIVES

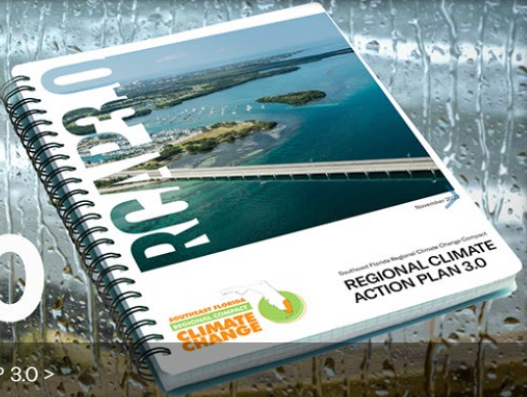


Updated guidance to support the implementation and acceleration of local and regional climate action in Southeast Florida.

Regional Climate Action Plan

RCAP 3.0

Learn more about RCAP 3.0 >



CLIMATE LEADERSHIP SUMMIT 2022 14TH ANNUAL
SOUTHEAST FLORIDA
FORT LAUDERDALE
8-9 DECEMBER 2022



Notable Advancement – Policy

Priorities:

- Regional (Climate Pollution Recovery Grant)
- FDOT /FDEP grants
- Countywide Net-Zero Plan
- Resilience Plan



Climate Pollution Reduction Grants

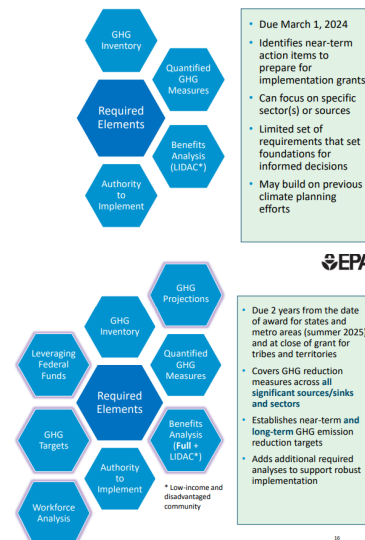
\$5 billion

from the Inflation Reduction Act to fund innovative projects that tackle climate pollution

EPA

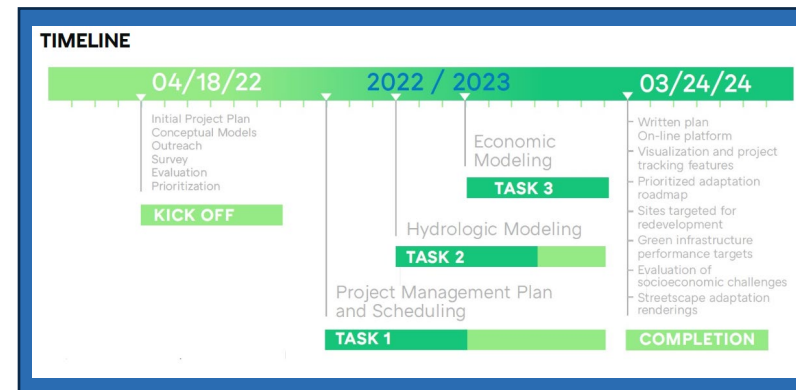
Priority Climate Action Plan

Comprehensive Climate Action Plan



- Due March 1, 2024
- Identifies near-term action items to prepare for implementation grants
- Can focus on specific sector(s) or sources
- Limited set of requirements that set foundations for informed decisions
- May build on previous climate planning efforts

- Due 2 years from the date of award for states and metro areas (summer 2025) and at close of grant for tribes and territories
- Covers GHG reduction measures across all significant sources/sinks and sectors
- Establishes near-term and long-term GHG emission reduction targets
- Adds additional required analyses to support robust implementation





Healthy Community

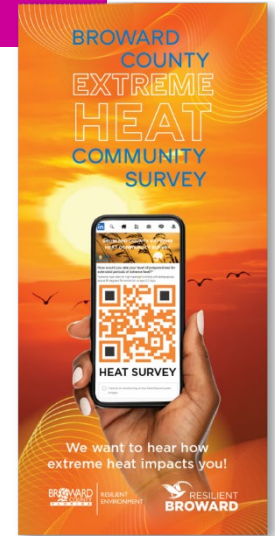
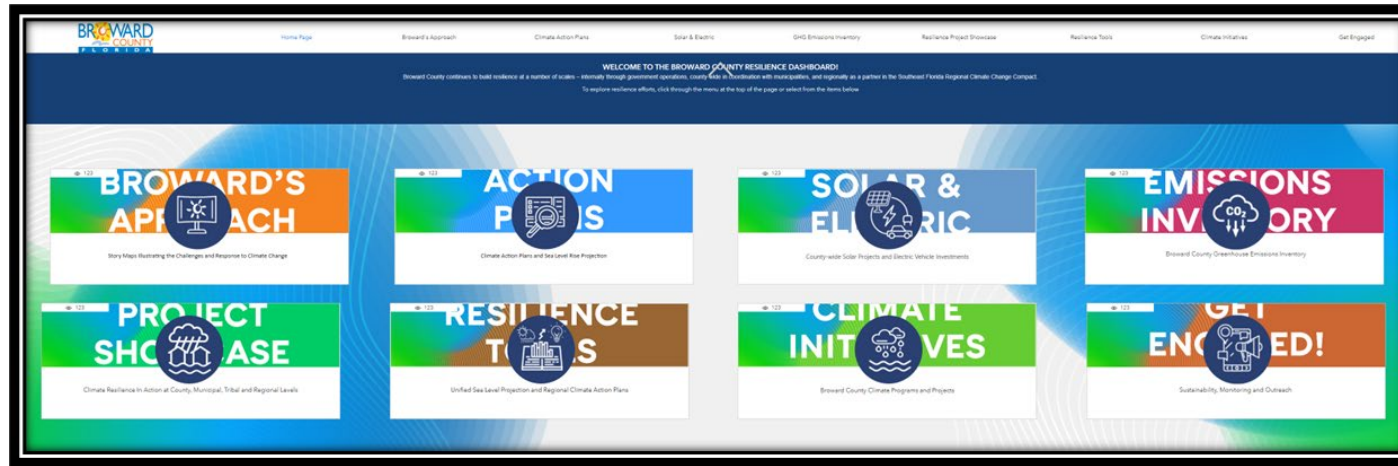
- The actions under Healthy Community provide broad community outreach and education on such climate change-related topics as mitigation and adaptation strategies. The expected cost of inaction and promotion of sustainable choices. Additionally, the actions deliver climate change education to all audiences to increase awareness of and mobilize action on climate change.
- Objective : Deliver climate change educational information to all audiences, engage stakeholders to collectively address climate impacts and increase community resilience.



Highlights - Healthy Community

Highlights:

- Resilience Dashboard
- Beat the Heat Story Map and Extreme Heat Community Survey
- Website / Social Media
- Resilience Newsletter



Heat Advisory, Broward County

PDF - 10 tips for outdoor workers and employers [Read More...](#)



Beat the Heat

Last year the average temperature in Broward County was 3.7 degrees warmer than it was a hundred years ago. Review temperature trends, hot spots, heat strategies and more.

[READ MORE](#)



Seawall Standards

Broward County has created regional guidance so that coastal and tidal flood barriers will continue to provide protection, even under future sea level rise conditions.

[READ MORE](#)



High Tides and Sea Levels

High tide flooding is expected to accelerate - with major impacts to infrastructure and the economy. Broward's coastal flood mitigation strategies, tools and resources can help you with your planning.

[READ MORE](#)

Notable Advancement - Healthy Community

Priorities:

- Virtual Resilience Hub
- Multilingual tools and education materials
- Communicating Extreme Heat

<p>Heat Index Above 90°F</p>  <p>Outdoor workers become more susceptible to heat-related illness.</p>	<p>Heat Index Above 100°F</p>  <p>Children, elderly adults, pregnant women, and people with underlying conditions are at heightened risk of heat-related illness.</p>	<p>Heat Index Above 105°F</p>  <p>Anyone could be at risk of heat-related illness or even death as a result of prolonged exposure.</p>	<p>Heat Index Off the Charts</p>  <p>Undetermined: any level of exposure is presumed extremely dangerous for all people and likely to result in heat-related illness or even death.</p>
---	--	---	---



Índice de la Calidad del Aire

Buena
Significa: La calidad del aire es satisfactoria. La contaminación del aire presenta poco o ningún riesgo.
Acción: Disfruta las actividades.
1 - 50

Moderada
Significa: La calidad del aire es aceptable, pero preocupante para personas particularmente sensibles a la contaminación del aire.
Acción: Personas particularmente sensibles a la contaminación del aire deberían planificar actividades al aire libre para cuando mejore la calidad del aire.
51 - 100

No es saludable para Grupos Sensitivos
Significa: La calidad del aire no es saludable para las personas de grupos sensitivos.
Acción: Grupos sensitivos deberían reducir o reprogramar las actividades al aire libre.
101 - 150

No es saludable
Significa: La calidad del aire no es saludable para todos.
Acción: Todos deberían reducir o reprogramar las actividades al aire libre. Grupos sensitivos deberían evitar todas las actividades al aire libre.
151 - 200

Extremadamente Dañino
Significa: La calidad del aire es muy dañina para todos.
Acción: Todos deben reducir significativamente las actividades al aire libre. Grupos sensitivos deberían evitar todas las actividades al aire libre.
201 - 300

Peligrosa
Significa: Advertencias de salud sobre condiciones de emergencia.
Acción: Todos deberían evitar actividades al aire libre.
301 - 500



¿Qué es el índice de la calidad del aire (AQI)?
Un índice para reportar la calidad del aire usado por la EPA de los E.E.U.U. Calculado para detectar los cinco contaminantes principales regulados por la Ley del Aire Limpio.

Entendiendo el AQI
Entre más alto el valor del AQI, más alta la contaminación del aire, más alto el riesgo a la salud. Cada nivel de riesgo para la salud está asociado con un color específico.

¿Cuáles son grupos sensitivos?

- Personas con enfermedades del corazón
- Personas con enfermedades pulmonares
- Personas mayores
- Los niños
- Personas con diabetes

¿Por qué importa en el Sur de la Florida?
El ozono a nivel del suelo es nuestro contaminante principal más preocupante.

AirNow.gov

GET SOCIAL WITH US!

- @BrowardEnv
- @BrowardEnv
- @BrowardEnvironment
- @BrowardCountyEnvironment

For more information, visit Broward.org/Air

BROWARD COUNTY FLORIDA
Broward County Board of County Commissioners
Air Quality Program
This public document was promulgated at a cost of \$000.00 or \$0.0000 per copy, to provide information about the Air Quality Program and the AQI Index.

Employers are Responsible for Protecting Workers from Heat Illness

By law employers are responsible for providing workplaces free of known safety hazards, including extreme heat.

It is your responsibility to:

- Provide workers with water, rest and shade.
- Allow new or returning workers to gradually increase workloads and take more frequent breaks during the first week of work as they build a tolerance for working in the heat.
- Plan for emergencies and train workers on prevention.
- Monitor workers for signs of illness.

[osha.gov/heat](https://www.osha.gov/heat)



OSHA



Transportation

- The actions to improve transportation include the reduction of emissions from single-occupancy fossil fuel-powered vehicles by increasing the use of multi-modal systems, expanding electric vehicle use and increasing access to charging infrastructure. Resilience will be increased by better ensuring connectivity across modes and sectors of transportation and by assessing and addressing system vulnerabilities through new projects.
- Objective :Increase the resilience of the transportation system and infrastructure and reduce emissions; electrify the County vehicle fleet by 2030; reduce transportation emissions by 2% each year.



Highlights -Transportation



Highlights:

- County facilities – 126 Level II EV chargers installed; 1 Level II EV fast charger installed
- BCPS – 60 Electric Buses 2023/2024 School year
- BCT – 12 Electric Buses operating; 32 added to fleet in 2023
- BC Fleet – 73 electric vehicles/trucks in county fleet; 57 EV's on order for FY23
- BCT Premium Mobility Plan (PREMO)



PREMO Goals
The following goals are the foundation for PREMO. The goals were developed collaboratively with the Project Advisory Group (PAG), leadership, and agency staff.

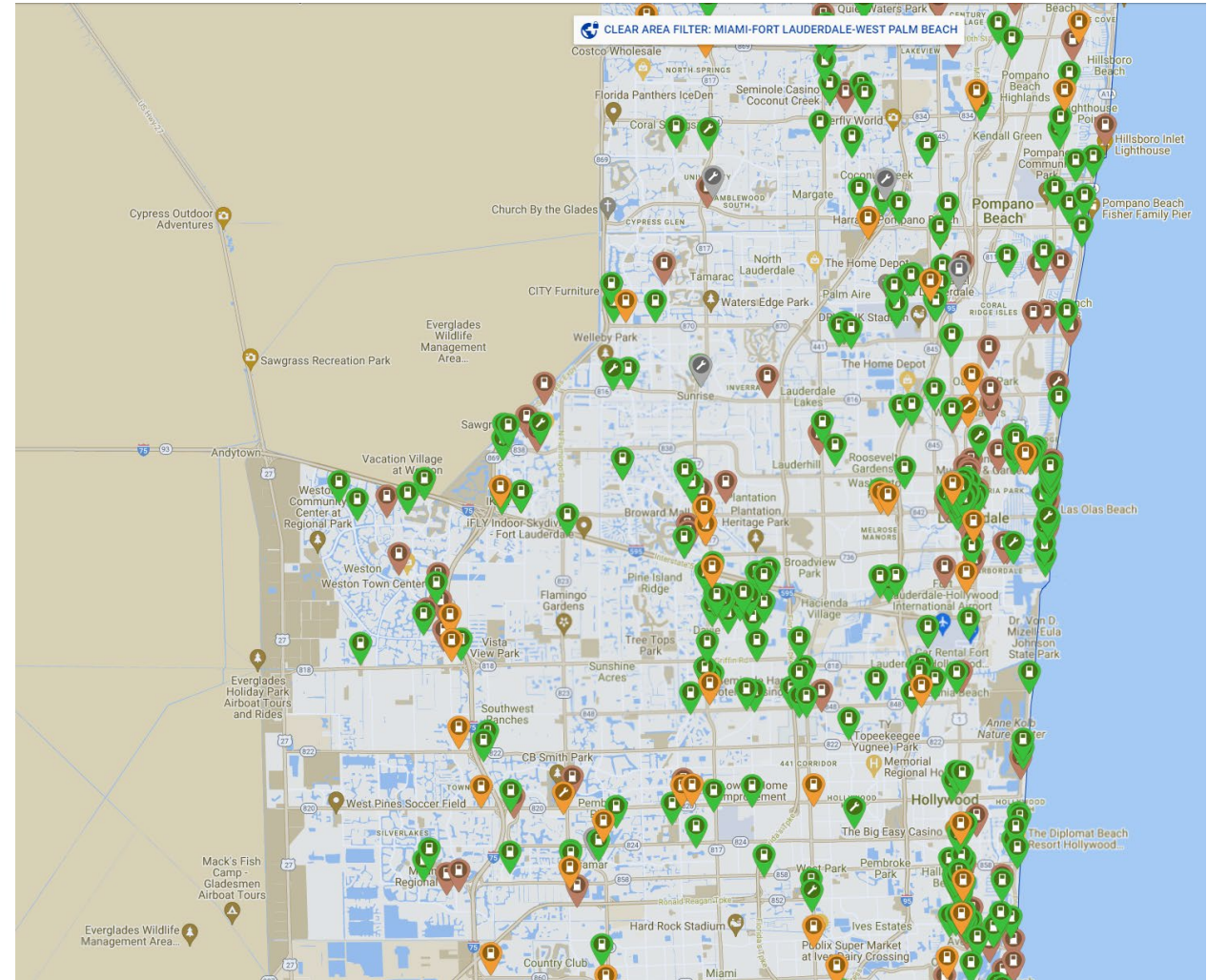
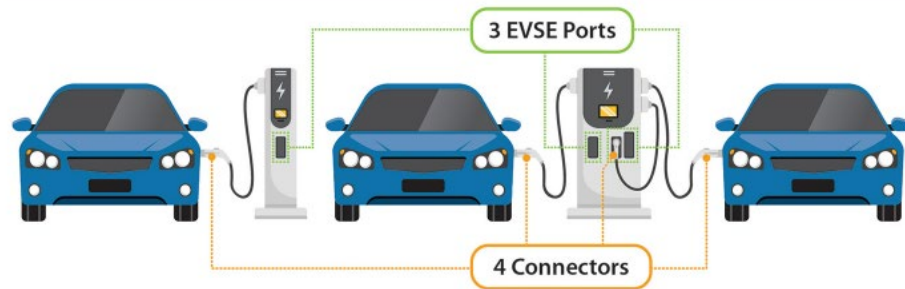


Notable Advancements - Transportation

Priorities:

- Electric Vehicle Charging Infrastructure Strategy

1 Station Location





Built Environment

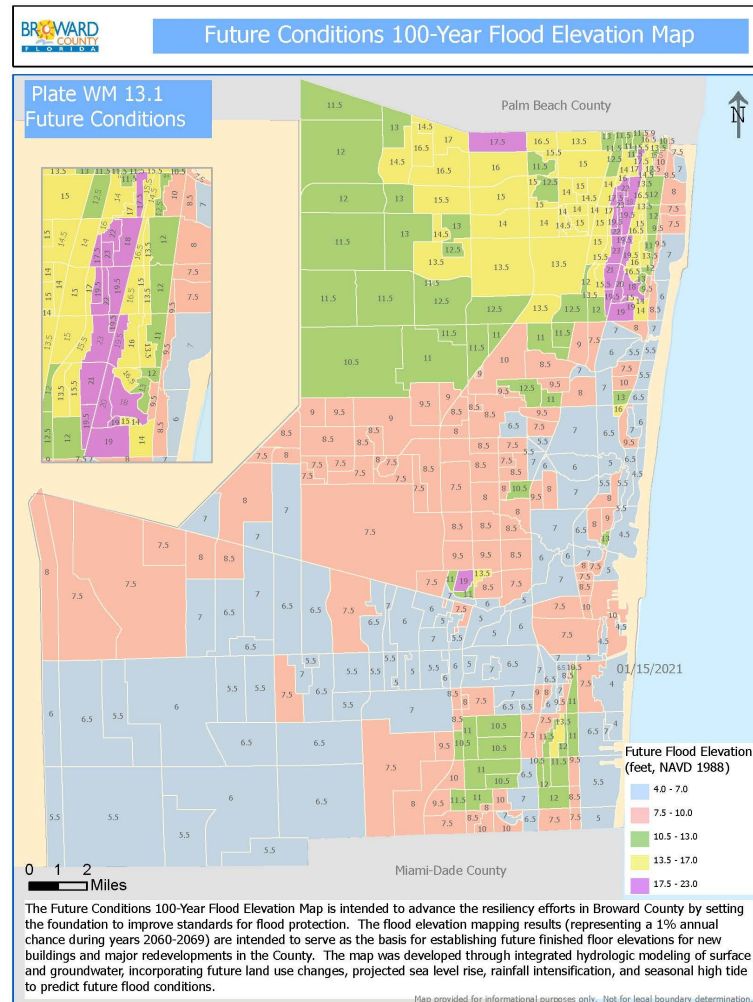
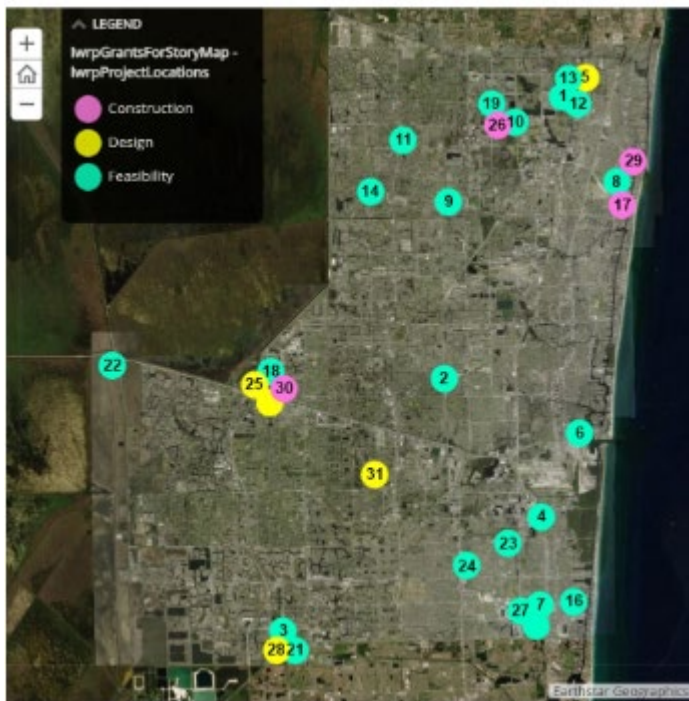
- The actions under Built Environment build stronger communities and infrastructure, protect critical sectors of our industry, government and natural resources, and use sound science to better understand and address climate impacts.
- Objective :Assess the impacts of climate change on the built environment; provide tools for climate resilience and support climate-resilient investments; and reduce risk through proactive planning for transportation, energy, and natural infrastructure.



Highlights - Built Environment

Highlights:

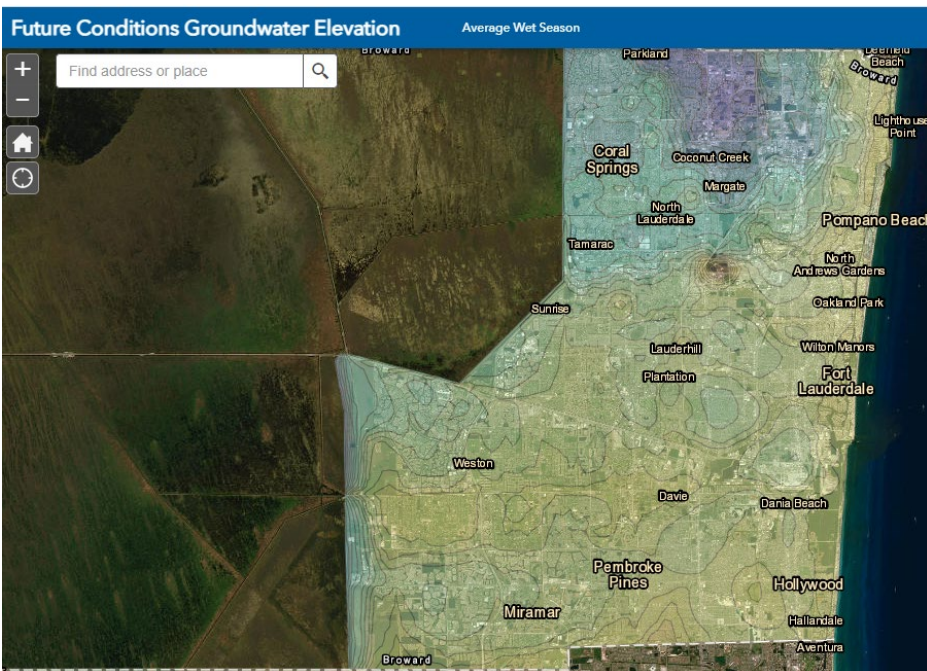
- Adopted Future 100- year Flood Elevation Map 2021
- Integrated Water Resources Plan



Notable Advancement - Built Environment

Priorities:

- Maintain beaches
- Engagement with Community Based Organizations
- CPRG grant planning
- GW table map
- Resilient Florida Grants



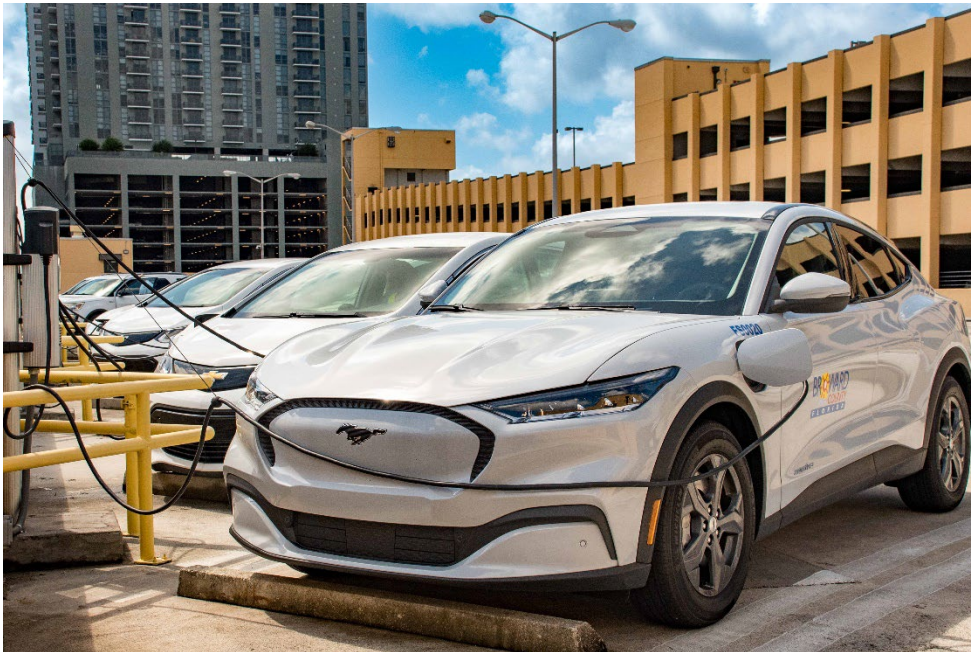
Urban League of Broward County





Energy Resources

- The actions under Energy Resources increase sustainable consumption through efficiency and conservation efforts, expand renewable and alternative fuel infrastructure, and create incentive programs and opportunities to reduce energy burdens.
- Objective : Reduce emissions from electricity by 2% per year; Achieve a renewable energy portfolio of 30% by 2030; and Reduce waste.



Highlights - Energy Resources

Page 1 of 2

2021 Greenhouse Gas Emissions Summary

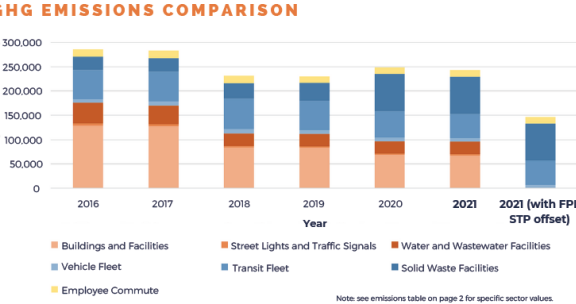
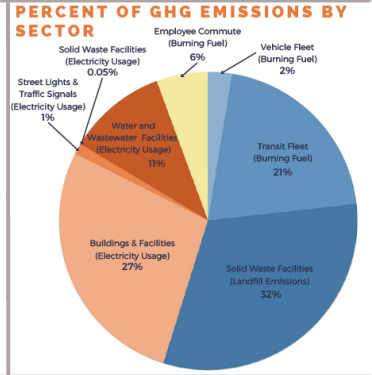
BROWARD COUNTY - GOVERNMENT OPERATIONS

OVERVIEW
 To gain a better understanding of the greenhouse gas (GHG) emissions being generated as part of Broward County's everyday business practices, government operations GHG emissions are calculated annually using the ICLEI Clearpath tool. GHG inventories enable local governments to assess their risks and opportunities, track their progress, and create a strategy to reduce emissions in a quantifiable and transparent way. Under the government operations protocol a local government accounts for 100 percent of the GHG emissions from operations over which it has control. It does not account for GHG emissions from operations in which it owns an interest but has no control.

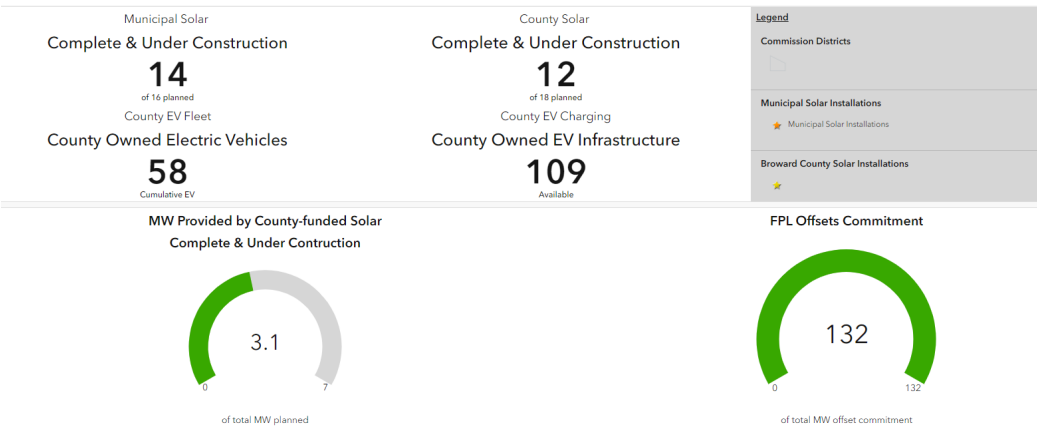
TOTAL GHG EMISSIONS IN 2021:
243,138
 Metric Tons CO₂e

Total GHG emissions in 2021 are equivalent to the emissions generated by **52,359** gasoline-powered passenger vehicles in one year.*

Total GHG emissions offset, in 2021, from the County's participation in the Florida Power & Light (FPL) Solar Together program (STP):
96,175
 Metric Tons CO₂e
 This equates to a **39% Reduction** in GHG emissions



- Highlights:**
- Government Operations and Countywide GHG Reports
 - County solar projects
 - PACE



PACE Broward By The Numbers thru 3/2023

- 27,831 PACE Projects Completed
- \$632,653,241 Financed
- Enough Energy Saved to Power 10,137 Homes
- \$11,633,346 Energy Savings Potential*
- 73% Funds Used for Hurricane Protection
- 13,880 kW Solar Capacity Installed

*Based on FPL \$.1025 kWh rate



Notable Advancement - Energy Resources

Priorities:

- Promote Private Sector efforts
- Supporting partnerships with Solar United Neighbors (SUN) and Solar and Energy Loan Fund (SELF)



Broward County 2020 Solar Co-op
Florida / 2020

139 Participants	19 Installations	258 kW Capacity
\$593k Invested	\$960k 25-Year Savings	

Installed By: [Logo]

Community partners: [Logos: Broward County, Dream Green, ReThink Energy Florida, Citizens' Climate Lobby, Sierra Club, Temple SOEL, LWV]

Broward County 2021 Solar Co-op
Florida / 2021

168 Participants	20 Installations	211 kW Capacity
\$519k Invested	\$861k 25-Year Savings	

Installed By: [Logo]

Community partners: [Logos: Broward County, Dream Green, ReThink Energy Florida, Citizens' Climate Lobby, Sierra Club, Temple SOEL, LWV]



Natural Systems

- The actions under Energy Resources evaluate and reduce the impacts of climate change on our natural systems and further the integration of natural systems into the urban environment to increase resilience to future climate change impacts.
- Objective : Preserve reefs, natural areas and habits to help protect native species; Integrate natural systems and green infrastructure throughout the community; and Evaluate current and future impacts of climate change on our natural resources and ecosystems.



Highlights - Natural Systems



Highlights:

- Coastal Dune Project Funding Increase
- Public outreach on coral reef



Notable Advancement - Natural Systems

Priorities:

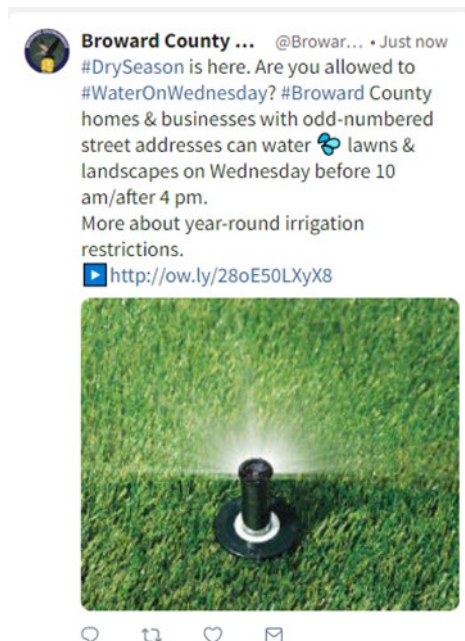
- Informational signage on Resilience Efforts
- Increase tree canopy utilizing Tree Trust Fund





Water Resources

- The actions under Water Resources maintain adequate water supply through efficiency and conservation efforts, develop decision support tools necessary to build community resilience and increase the resilience of natural systems through water resource management.
- Objective : Ensure existing water resources are protected and remain available through conservation and sustainable management; Preserve capacity by diversifying source alternatives; Balance the water needs of public consumers and natural systems.



Highlights - Water Resources

Highlights:

- Completion of the C51 Reservoir
- TY Park – water reuse



Notable Advancement - Water Resources

- Priorities:**
- Conservation Pays Updates



GET A
\$125 REBATE

**EACH DROP COUNTS
AND EACH DOLLAR TOO!**

Our rebate amount has increased!

Get \$25 more on your brand new high-efficiency toilet.*

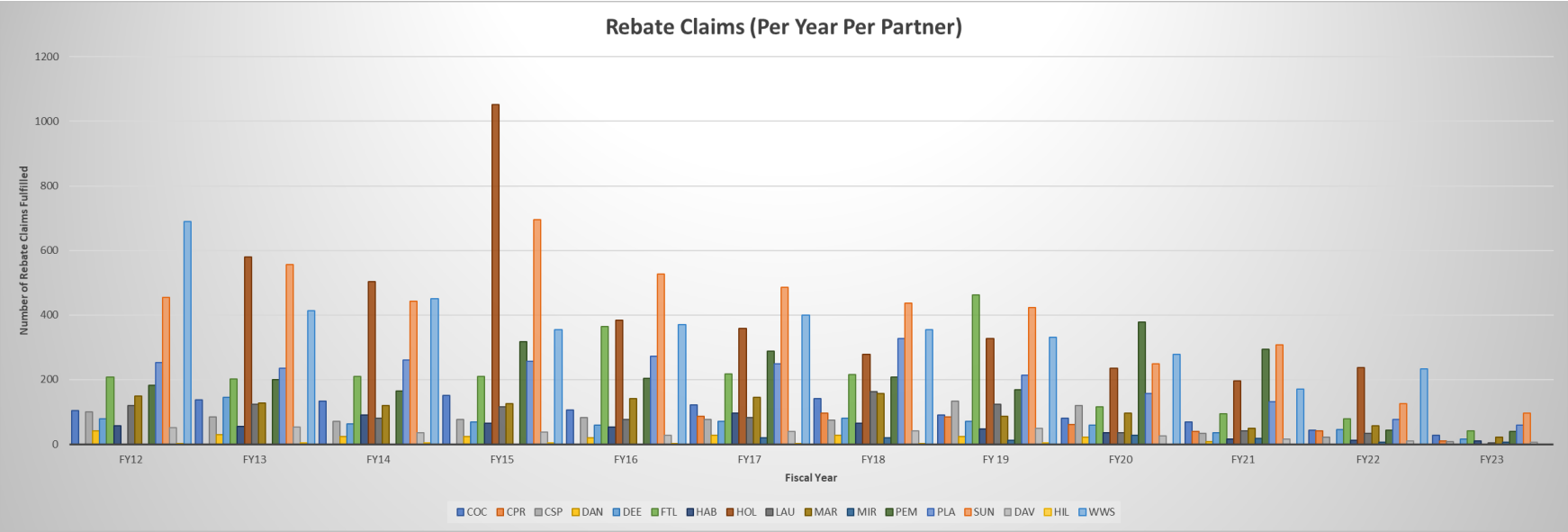
**Check Eligibility & Apply Before Purchase*




APPLY TODAY!

CONSERVATION Pays .COM

SCAN ME





Moving Forward

2020 CCAP

2025 CCAP

Open Discussion

