



BERTHA W. HENRY, County Administrator

115 S. Andrews Avenue, Room 409 • Fort Lauderdale, Florida 33301 • 954-357-7362 • FAX 954-357-7360

April 27, 2018

Dr. Wazir Ishmael, City Manager
City of Hollywood
P.O. Box 229045
Hollywood, Florida 33022-9045

Dear Dr. Ishmael:

RE: Status on the Approval of Variances for the Construction of Radio Towers in the City of Hollywood

As a follow-up to my letter dated April 3, 2017 (attached) regarding radio tower sites in the City of Hollywood (City), I am inquiring on the status on the approval of the variances from the City for the construction of these new tower sites. As you are aware, the site locations are on County-owned properties and have been determined to be the best suited locations to provide for the optimal coverage for the new P25 radio system.

County staff has been in communication with your staff and has submitted necessary information; unfortunately, there has not been any movement to proceed with the approval of the variances.

As you are aware, these sites are critical to build a state of the art radio system with coverages to meet our needs well into the future. The radio coverage analysis performed by our Consultant, Mission Critical Partners, confirms that these sites are needed to properly cover the City of Hollywood, and address current radio dead spots along the oceanfront, high rise buildings, and western parts of the City.

Your attention and approval of the variance for this critical public safety issue is appreciated. If you have any questions, please contact me or Alphonso Jefferson, Jr., Assistant County Administrator, at 954-357-7352 or via email at ajefferson@broward.org.

Sincerely,

A handwritten signature in blue ink, appearing to read "Bertha Henry", is written over a light blue circular background.

Bertha Henry
County Administrator

cc: Board of County Commissioners

Alphonso Jefferson, Jr., Assistant County Administrator

Brett Bayag, Acting Director, Office of Regional Communications and Technology

Broward County Board of County Commissioners

Mark D. Bogen • Beam Furr • Steve Geller • Dale V.C. Holness • Chip LaMarca • Nan H. Rich • Tim Ryan • Barbara Sharief • Michael Udine
www.broward.org



BERTHA W. HENRY, County Administrator

115 S. Andrews Avenue, Room 409 • Fort Lauderdale, Florida 33301 • 954-357-7362 • FAX 954-357-7360

April 3, 2017

Dr. Wazir Ishmael, City Manager
City of Hollywood
P.O. Box 229045
Hollywood, FL 33022-9045

Dear Dr. Ishmael:

Subject: Follow-up on Discussion Regarding Radio Tower Sites in the City of Hollywood

As you are aware, Broward County has embarked on the replacement of its 25 year old radio communication network with a more state of the art digital system that allows for future expansion to accommodate the growing population of our County. The design and location of tower sites were selected to ensure that we achieve the requirements for optimal coverage.

From our meeting on February 21, 2017, please allow this letter to follow up on the discussion regarding two alternative radio tower sites proposed by the City of Hollywood: (City Storage Facility- 69th Ave & Sheridan and City FR training Site – 56th street). These alternate sites were reviewed with our consultant, Mission Critical Partners. Unfortunately, they do not meet the specifications needed.

Based on the radio coverage analysis that was performed by Mission Critical Partners, the ideal locations for the radio tower sites are listed below, and a copy of the presentation that was previously given to City officials is attached:

1. West Lake Park – 1200 Sheridan St
2. County's WWS Plant – SW 49 Ct and SW 40th Ave

These tower sites are needed to properly cover the City of Hollywood and address current dead spots along the oceanfront, high rise buildings, and western parts of the City. The following are some specifics of the tower sites:

- 300 ft. high towers are desired for optimal system performance for Hollywood and surrounding users
- Top mounted candelabra for multiple antennas
- 325 ft. total height with antennas
- Lattice self-supporting tower for capacity
- Equipment shelter at tower base

Dr. Wazir Ishmael, City Manager
City of Hollywood, Florida
April 3, 2017

We are in negotiations with Motorola Solutions, Inc. on a contract for the replacement of the existing radio system. Once this contract is finalized and approved by the Board of County Commissioners, we will be finalizing the technical designs, radio tower sites, and implementation timeline for the new radio system; thus, time is of the essence.

We look forward to working with the City of Hollywood on these tower sites. If you have any questions, please contact me or Alphonso Jefferson, Jr., Assistant County Administrator at 954-357-7352 or via email at ajefferon@broward.org.

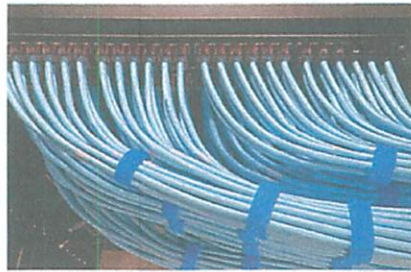
Sincerely,



Bertha Henry
County Administrator

Attachment

cc: Board of County Commissioners
Alphonso Jefferson, Jr., Assistant County Administrator
Brett Bayag, Acting Director, Office of Regional Communications and Technology



MissionCriticalPartners



Committed to Earning Your TRUST

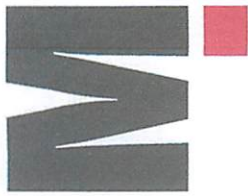
Broward County Public Safety Radio System

Hollywood Proposed P25 Tower Sites

Your Life Safety Mission Is Our Passion

Public Safety Communication Consultants

MCP911.com

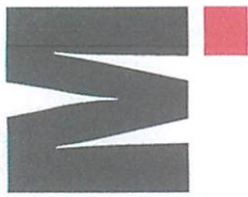


Current Tower Sites

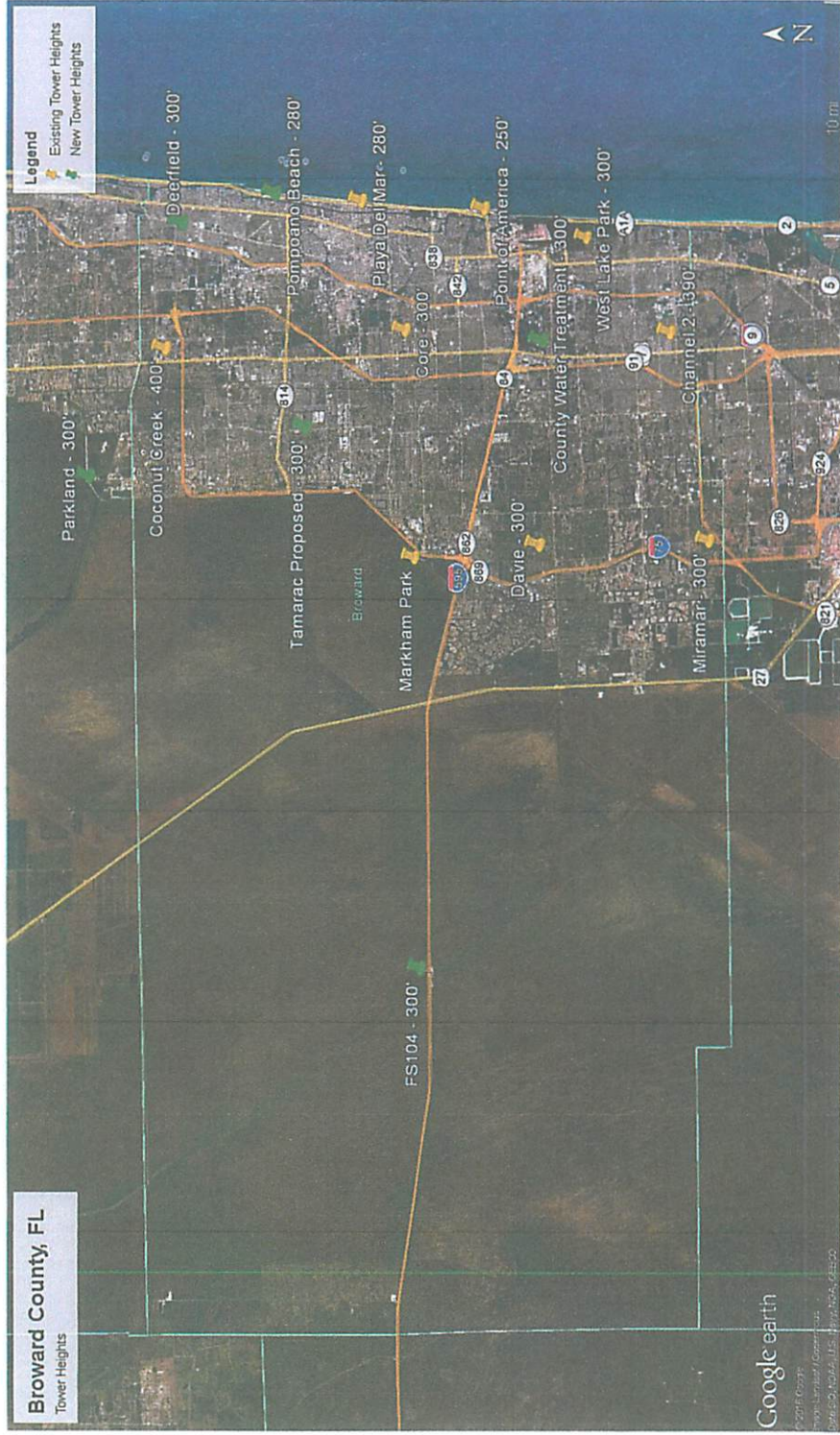


Your Life Safety Mission Is Our Passion

Public Safety Communication Consultants



Proposed and Current Towers



Your Life Safety Mission Is Our Passion

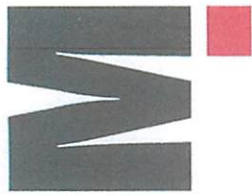
Public Safety Communication Consultants



Public Safety Radio Towers

- The P25 Radio System will require 2 locations in Hollywood
- Proposed candidate sites:
 - West Lake Park – Oceanfront Coverage
 - Water and Waste Water plant – Western Coverage
 - Hollywood Fire Training Academy- Option for Water and Waste Water plant
 - Vehicle Storage Facility – Existing tower – Option for Waste Water Plant
- Two towers are needed to properly cover the City of Hollywood and eliminate current dead spots along the oceanfront, high rise buildings and western parts of the City
- Towers will provide coverage for City’s Public Safety First Responders (Police, Fire, EMS)
- 300 ft high towers are desired for optimal system performance for Hollywood and surrounding users
 - Top mounted candelabra for multiple antennas
 - 325 ft total height with antennas
 - Lattice self supporting tower for capacity
 - Equipment shelter at tower base

Public Safety Communication Consultants



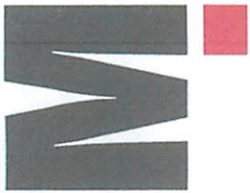
Proposed Hollywood Tower Sites



Public Safety Communication Consultants

Your Life Safety Mission Is Our Passion

TL4
TL5



West Lake Park Site Location



Public Safety Communication Consultants

MCP911.COM

Your Life Safety Mission Is Our Passion



County's Waste Water Plant Site Location Option for Western Coverage

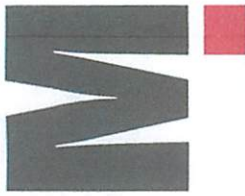


Public Safety Communication Consultants

Your Life Safety Mission Is Our Passion

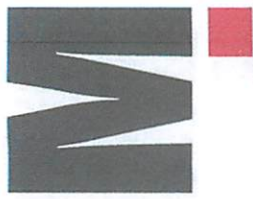
7

MCP911.com



Hollywood Fire Rescue Training Facility Location – Option for Western Coverage





Hollywood Vehicle Storage Location Option for Western Coverage



Public Safety Communication Consultants

Your Life Safety Mission Is Our Passion



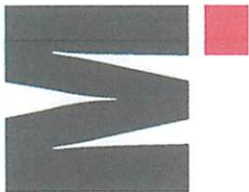
Tower Site Details

- 75' x 75' Fenced Compound
- 300 ft Self-Supporting Tower
- 20' x 24 ' Prefabricated Shelter
- Generator
- Parking Area
- Compound Totally Fenced
- Pervious Stone and Weed Barrier

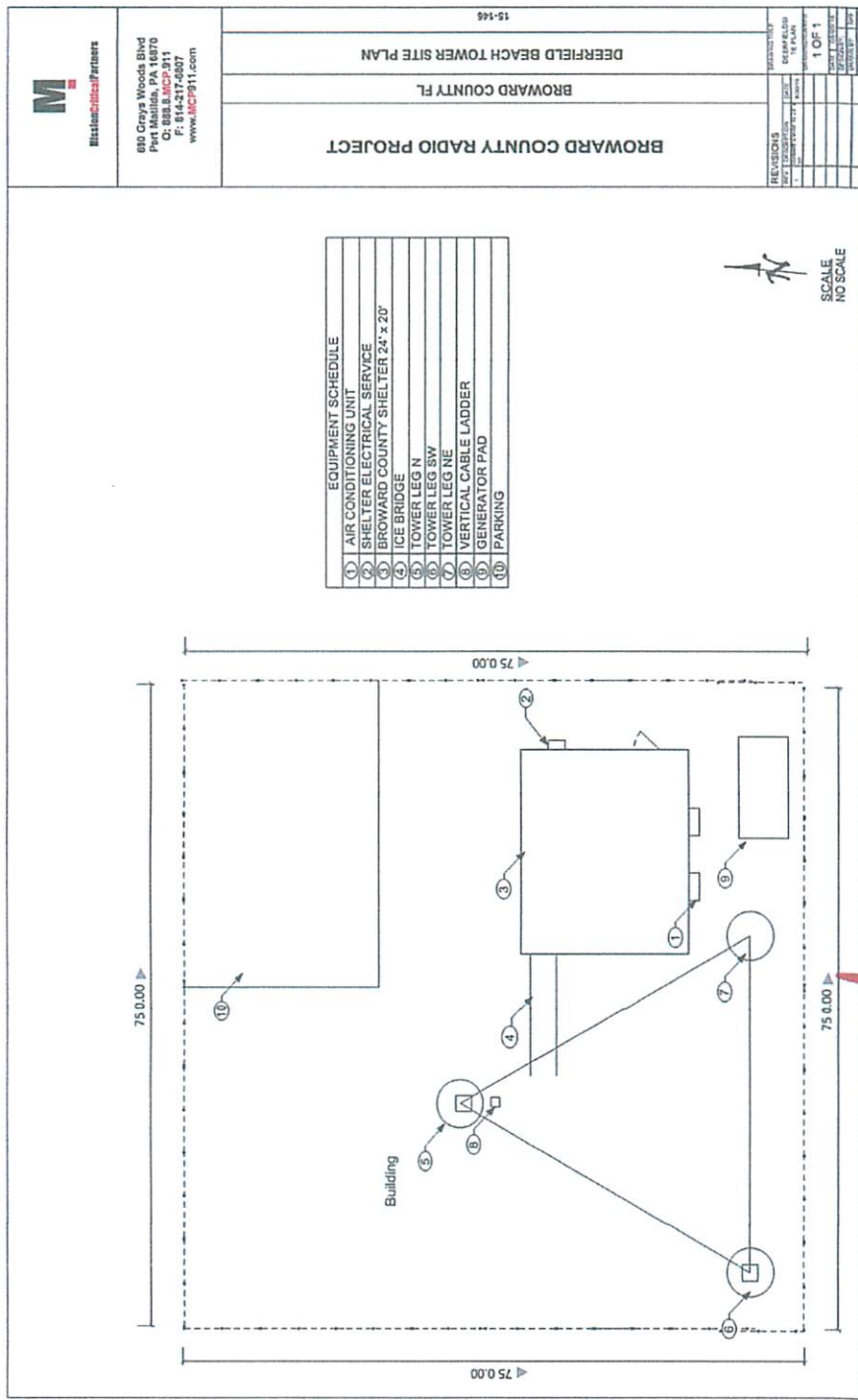
Public Safety Communication Consultants

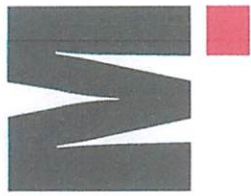
Your Life Safety Mission Is Our Passion

10 **MCP911.com**

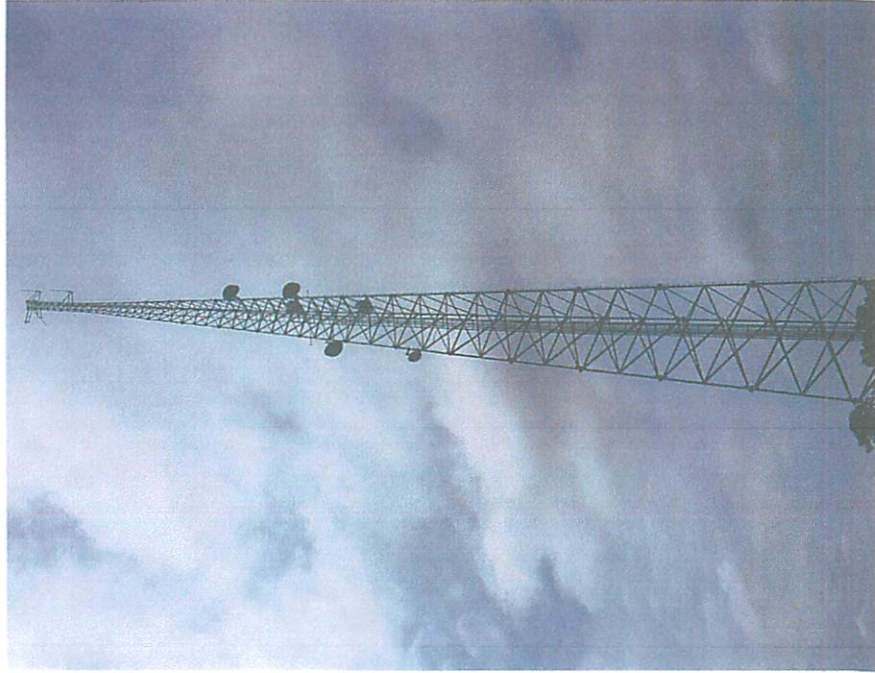


Site Layout



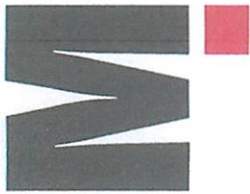


Typical Tower

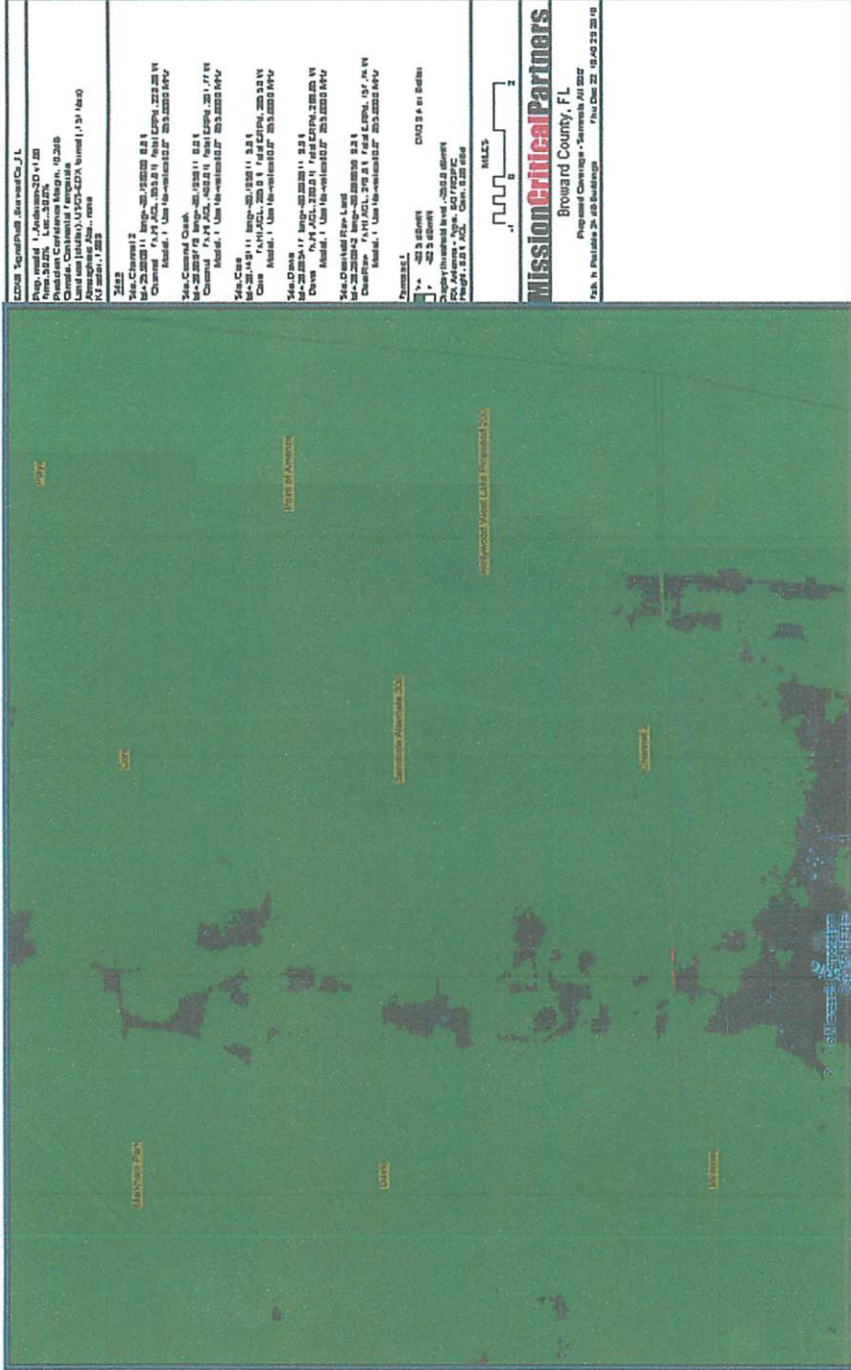


Your Life Safety Mission Is Our Passion

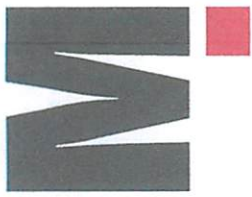
Public Safety Communication Consultants



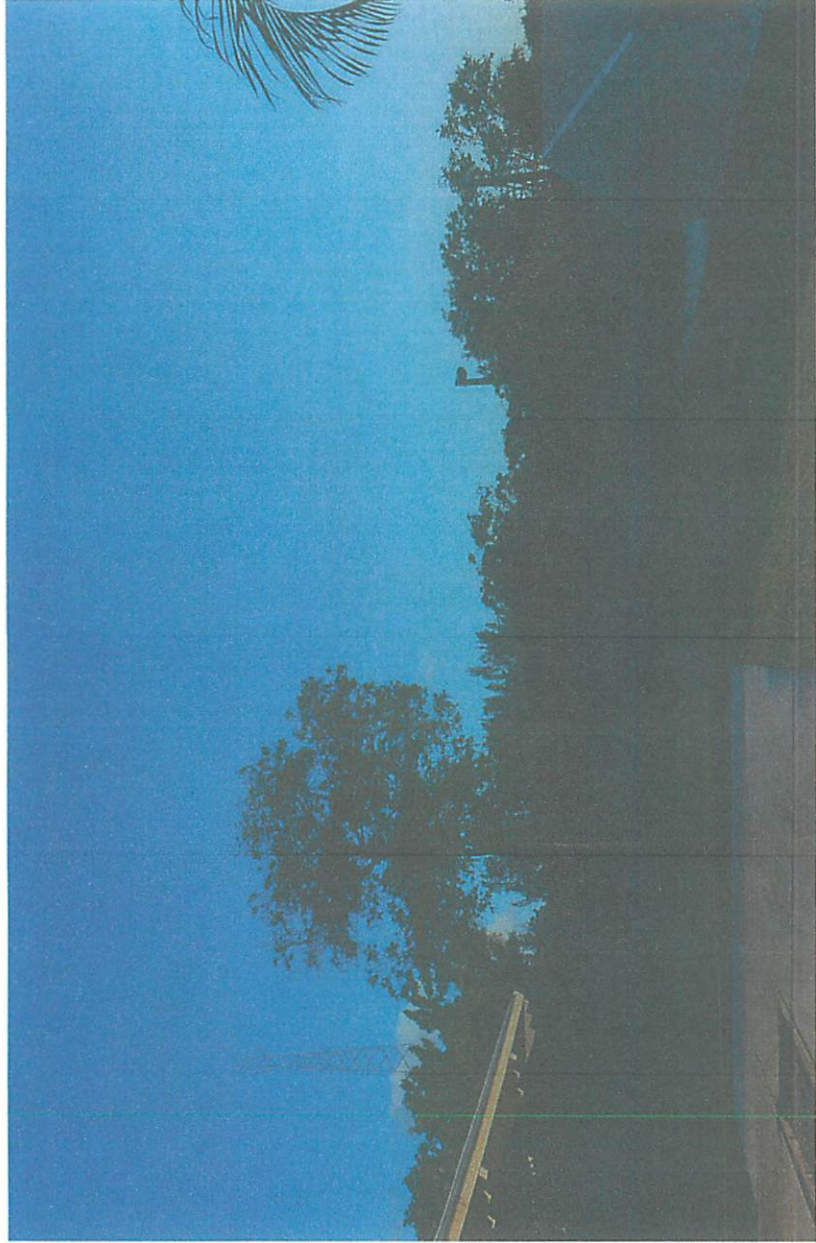
Coverage using County's Waste Water Location Indoors – Heavy Building



2438 2439 2440 2441 2442 2443 2444 2445 2446 2447 2448 2449 2450 2451 2452 2453 2454 2455 2456 2457 2458 2459 2460 2461 2462 2463 2464 2465 2466 2467 2468 2469 2470 2471 2472 2473 2474 2475 2476 2477 2478 2479 2480 2481 2482 2483 2484 2485 2486 2487 2488 2489 2490 2491 2492 2493 2494 2495 2496 2497 2498 2499 2500 2501 2502 2503 2504 2505 2506 2507 2508 2509 2510 2511 2512 2513 2514 2515 2516 2517 2518 2519 2520 2521 2522 2523 2524 2525 2526 2527 2528 2529 2530 2531 2532 2533 2534 2535 2536 2537 2538 2539 2540 2541 2542 2543 2544 2545 2546 2547 2548 2549 2550 2551 2552 2553 2554 2555 2556 2557 2558 2559 2560 2561 2562 2563 2564 2565 2566 2567 2568 2569 2570 2571 2572 2573 2574 2575 2576 2577 2578 2579 2580 2581 2582 2583 2584 2585 2586 2587 2588 2589 2590 2591 2592 2593 2594 2595 2596 2597 2598 2599 2600 2601 2602 2603 2604 2605 2606 2607 2608 2609 2610 2611 2612 2613 2614 2615 2616 2617 2618 2619 2620 2621 2622 2623 2624 2625 2626 2627 2628 2629 2630 2631 2632 2633 2634 2635 2636 2637 2638 2639 2640 2641 2642 2643 2644 2645 2646 2647 2648 2649 2650 2651 2652 2653 2654 2655 2656 2657 2658 2659 2660 2661 2662 2663 2664 2665 2666 2667 2668 2669 2670 2671 2672 2673 2674 2675 2676 2677 2678 2679 2680 2681 2682 2683 2684 2685 2686 2687 2688 2689 2690 2691 2692 2693 2694 2695 2696 2697 2698 2699 2700 2701 2702 2703 2704 2705 2706 2707 2708 2709 2710 2711 2712 2713 2714 2715 2716 2717 2718 2719 2720 2721 2722 2723 2724 2725 2726 2727 2728 2729 2730 2731 2732 2733 2734 2735 2736 2737 2738 2739 2740 2741 2742 2743 2744 2745 2746 2747 2748 2749 2750 2751 2752 2753 2754 2755 2756 2757 2758 2759 2760 2761 2762 2763 2764 2765 2766 2767 2768 2769 2770 2771 2772 2773 2774 2775 2776 2777 2778 2779 2780 2781 2782 2783 2784 2785 2786 2787 2788 2789 2790 2791 2792 2793 2794 2795 2796 2797 2798 2799 2800 2801 2802 2803 2804 2805 2806 2807 2808 2809 2810 2811 2812 2813 2814 2815 2816 2817 2818 2819 2820 2821 2822 2823 2824 2825 2826 2827 2828 2829 2830 2831 2832 2833 2834 2835 2836 2837 2838 2839 2840 2841 2842 2843 2844 2845 2846 2847 2848 2849 2850 2851 2852 2853 2854 2855 2856 2857 2858 2859 2860 2861 2862 2863 2864 2865 2866 2867 2868 2869 2870 2871 2872 2873 2874 2875 2876 2877 2878 2879 2880 2881 2882 2883 2884 2885 2886 2887 2888 2889 2890 2891 2892 2893 2894 2895 2896 2897 2898 2899 2900 2901 2902 2903 2904 2905 2906 2907 2908 2909 2910 2911 2912 2913 2914 2915 2916 2917 2918 2919 2920 2921 2922 2923 2924 2925 2926 2927 2928 2929 2930 2931 2932 2933 2934 2935 2936 2937 2938 2939 2940 2941 2942 2943 2944 2945 2946 2947 2948 2949 2950 2951 2952 2953 2954 2955 2956 2957 2958 2959 2960 2961 2962 2963 2964 2965 2966 2967 2968 2969 2970 2971 2972 2973 2974 2975 2976 2977 2978 2979 2980 2981 2982 2983 2984 2985 2986 2987 2988 2989 2990 2991 2992 2993 2994 2995 2996 2997 2998 2999 3000 3001 3002 3003 3004 3005 3006 3007 3008 3009 3010 3011 3012 3013 3014 3015 3016 3017 3018 3019 3020 3021 3022 3023 3024 3025 3026 3027 3028 3029 3030 3031 3032 3033 3034 3035 3036 3037 3038 3039 3040 3041 3042 3043 3044 3045 3046 3047 3048 3049 3050 3051 3052 3053 3054 3055 3056 3057 3058 3059 3060 3061 3062 3063 3064 3065 3066 3067 3068 3069 3070 3071 3072 3073 3074 3075 3076 3077 3078 3079 3080 3081 3082 3083 3084 3085 3086 3087 3088 3089 3090 3091 3092 3093 3094 3095 3096 3097 3098 3099 3100 3101 3102 3103 3104 3105 3106 3107 3108 3109 3110 3111 3112 3113 3114 3115 3116 3117 3118 3119 3120 3121 3122 3123 3124 3125 3126 3127 3128 3129 3130 3131 3132 3133 3134 3135 3136 3137 3138 3139 3140 3141 3142 3143 3144 3145 3146 3147 3148 3149 3150 3151 3152 3153 3154 3155 3156 3157 3158 3159 3160 3161 3162 3163 3164 3165 3166 3167 3168 3169 3170 3171 3172 3173 3174 3175 3176 3177 3178 3179 3180 3181 3182 3183 3184 3185 3186 3187 3188 3189 3190 3191 3192 3193 3194 3195 3196 3197 3198 3199 3200 3201 3202 3203 3204 3205 3206 3207 3208 3209 3210 3211 3212 3213 3214 3215 3216 3217 3218 3219 3220 3221 3222 3223 3224 3225 3226 3227 3228 3229 3230 3231 3232 3233 3234 3235 3236 3237 3238 3239 3240 3241 3242 3243 3244 3245 3246 3247 3248 3249 3250 3251 3252 3253 3254 3255 3256 3257 3258 3259 3260 3261 3262 3263 3264 3265 3266 3267 3268 3269 3270 3271 3272 3273 3274 3275 3276 3277 3278 3279 3280 3281 3282 3283 3284 3285 3286 3287 3288 3289 3290 3291 3292 3293 3294 3295 3296 3297 3298 3299 3300 3301 3302 3303 3304 3305 3306 3307 3308 3309 3310 3311 3312 3313 3314 3315 3316 3317 3318 3319 3320 3321 3322 3323 3324 3325 3326 3327 3328 3329 3330 3331 3332 3333 3334 3335 3336 3337 3338 3339 3340 3341 3342 3343 3344 3345 3346 3347 3348 3349 3350 3351 3352 3353 3354 3355 3356 3357 3358 3359 3360 3361 3362 3363 3364 3365 3366 3367 3368 3369 3370 3371 3372 3373 3374 3375 3376 3377 3378 3379 3380 3381 3382 3383 3384 3385 3386 3387 3388 3389 3390 3391 3392 3393 3394 3395 3396 3397 3398 3399 3400 3401 3402 3403 3404 3405 3406 3407 3408 3409 3410 3411 3412 3413 3414 3415 3416 3417 3418 3419 3420 3421 3422 3423 3424 3425 3426 3427 3428 3429 3430 3431 3432 3433 3434 3435 3436 3437 3438 3439 3440 3441 3442 3443 3444 3445 3446 3447 3448 3449 3450 3451 3452 3453 3454 3455 3456 3457 3458 3459 3460 3461 3462 3463 3464 3465 3466 3467 3468 3469 3470 3471 3472 3473 3474 3475 3476 3477 3478 3479 3480 3481 3482 3483 3484 3485 3486 3487 3488 3489 3490 3491 3492 3493 3494 3495 3496 3497 3498 3499 3500 3501 3502 3503 3504 3505 3506 3507 3508 3509 3510 3511 3512 3513 3514 3515 3516 3517 3518 3519 3520 3521 3522 3523 3524 3525 3526 3527 3528 3529 3530 3531 3532 3533 3534 3535 3536 3537 3538 3539 3540 3541 3542 3543 3544 3545 3546 3547 3548 3549 3550 3551 3552 3553 3554 3555 3556 3557 3558 3559 3560 3561 3562 3563 3564 3565 3566 3567 3568 3569 3570 3571 3572 3573 3574 3575 3576 3577 3578 3579 3580 3581 3582 3583 3584 3585 3586 3587 3588 3589 3590 3591 3592 3593 3594 3595 3596 3597 3598 3599 3600 3601 3602 3603 3604 3605 3606 3607 3608 3609 3610 3611 3612 3613 3614 3615 3616 3617 3618 3619 3620 3621 3622 3623 3624 3625 3626 3627 3628 3629 3630 3631 3632 3633 3634 3635 3636 3637 3638 3639 3640 3641 3642 3643 3644 3645 3646 3647 3648 3649 3650 3651 3652 3653 3654 3655 3656 3657 3658 3659 3660 3661 3662 3663 3664 3665 3666 3667 3668 3669 3670 3671 3672 3673 3674 3675 3676 3677 3678 3679 3680 3681 3682	
--	--

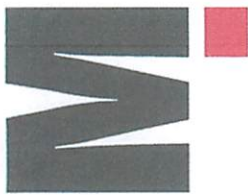


West Lake Tower Rendering View From Restroom Inside Park



Public Safety Communication Consultants

Your Life Safety Mission Is Our Passion



West Lake Tower Rendering View From Coolidge Street

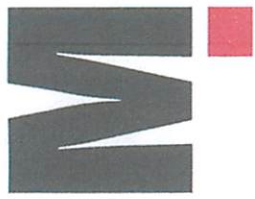


West Lake Park
From Coolidge St and N 14th Av



Your Life Safety Mission Is Our Passion

Public Safety Communication Consultants

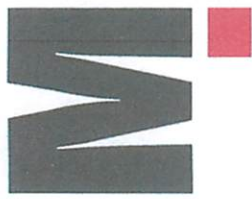


West Lake Tower Rendering View From Homes on East Side of the Lake

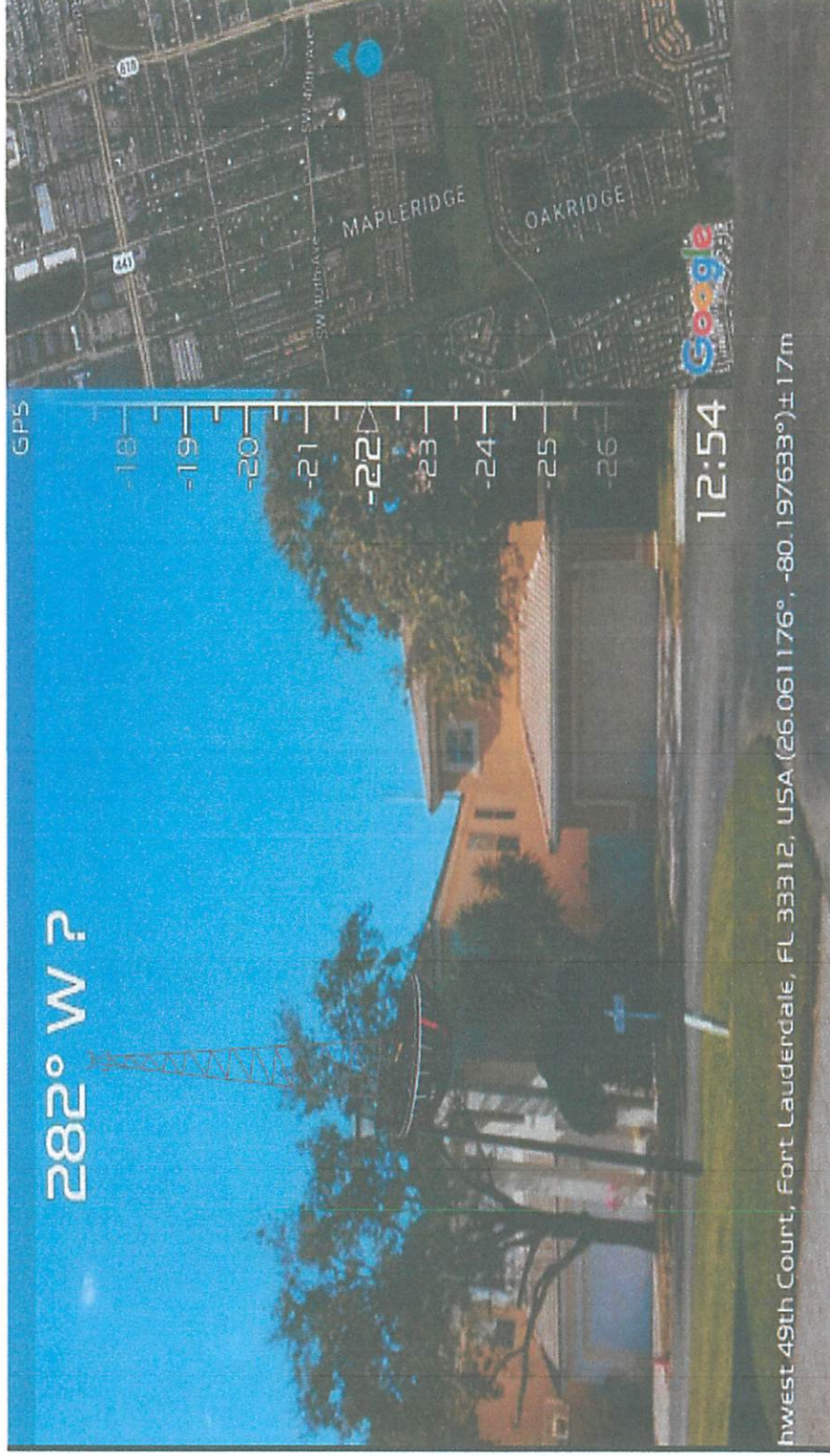


Your Life Safety Mission Is Our Passion

Public Safety Communication Consultants

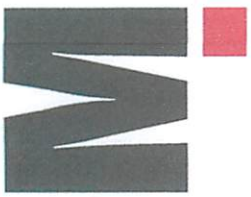


County's Water Plant Rendering From Houses on East



Your Life Safety Mission Is Our Passion

Public Safety Communication Consultants



Questions & Discussion



Your Life Safety Mission Is Our Passion

Public Safety Communication Consultants

20

MCP911.com