



Move People & Goods | Create Jobs | Strengthen Communities

The Role of the MPO in the Mobility Advancement Program

Independent Transportation Surtax Oversight Board

March 26, 2021

Bryan Caletka

Director of Transportation Policy

Todd A. Brauer, AICP, PTP

President/COO

The MPO's Four Tasks



Task No. 1 - Develop Procedures and Process



Task No. 2 - Rank New Municipal Capital Projects (MCPs)



Task No. 3 - Recommend MCPs within the MAG

Cycle 1 MCPs are priority, then New MCPs. Funding allocations are within the annual Minimum Annual Guarantee (MAG) as provided by the County



Task No. 4 - Recommend MCPs exceeding the MAG

Upon request from the County Administrator

What's The Difference Between Cycle 1 And New MCPs?



Cycle 1 MCPs

The original 110 (of the total 510) MCPs already approved for funding by the County



New MCPs consist of:

Previously submitted MCPs, ranked 111-510



Newly submitted MCPs in current and future cycles

Task No. 1



Develop Procedures and Process

- By February of each year, the MPO submits to the County Administrator a process to rank and recommend MCPs.
- This allows for continual updates between the MPO and the County, providing the ability to apply lessons learned.
- Communication between the County Administrator and the MPO ensures the cities are represented throughout the process.

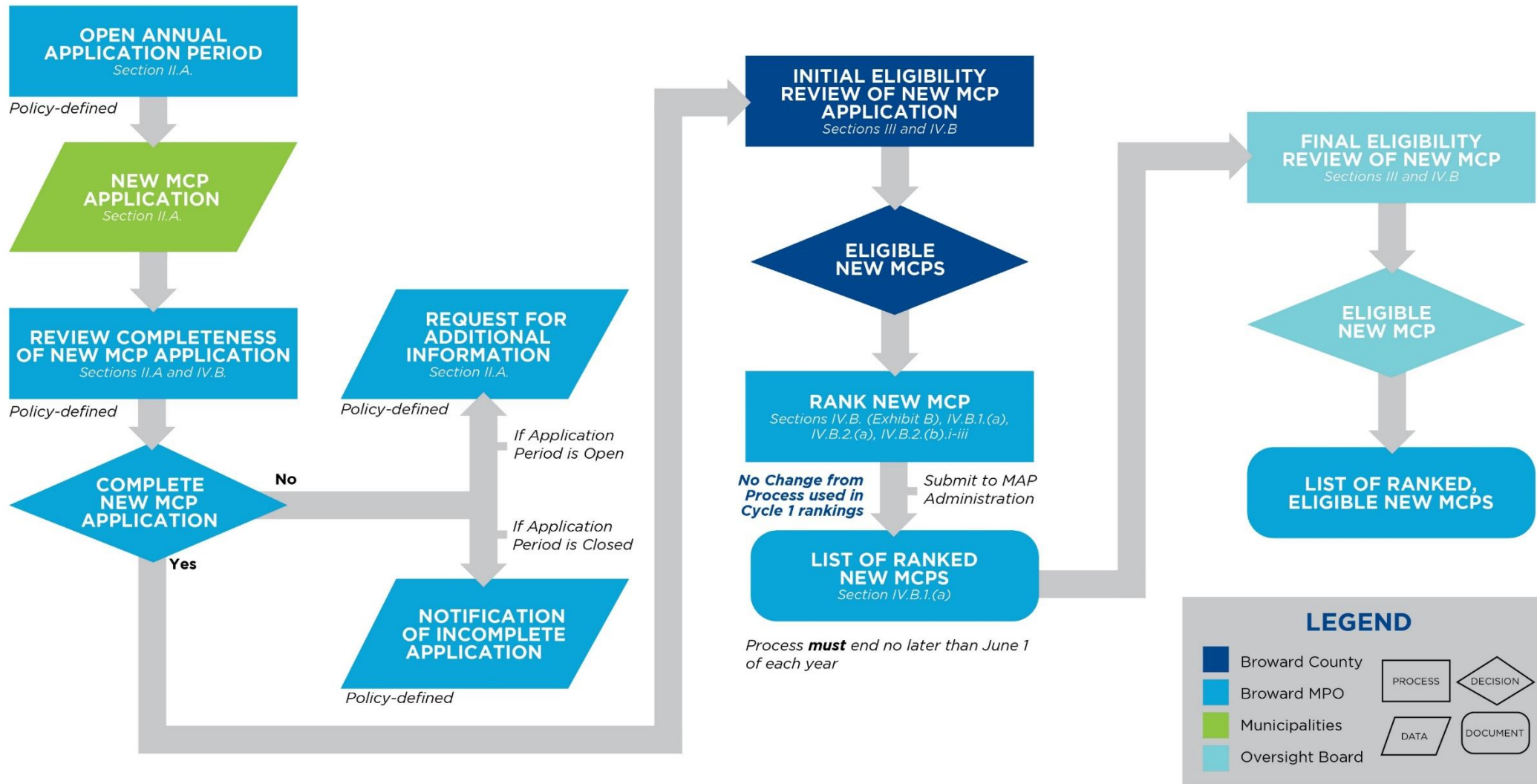
Task No. 2



Rank New MCPs

Process *begins* each year on the first Friday in February.
Application period is open for 28 calendar days.

Any MCP not in Cycle 1 (110 MCPs) is a New MCP.



Task No. 2 – Key Takeaways



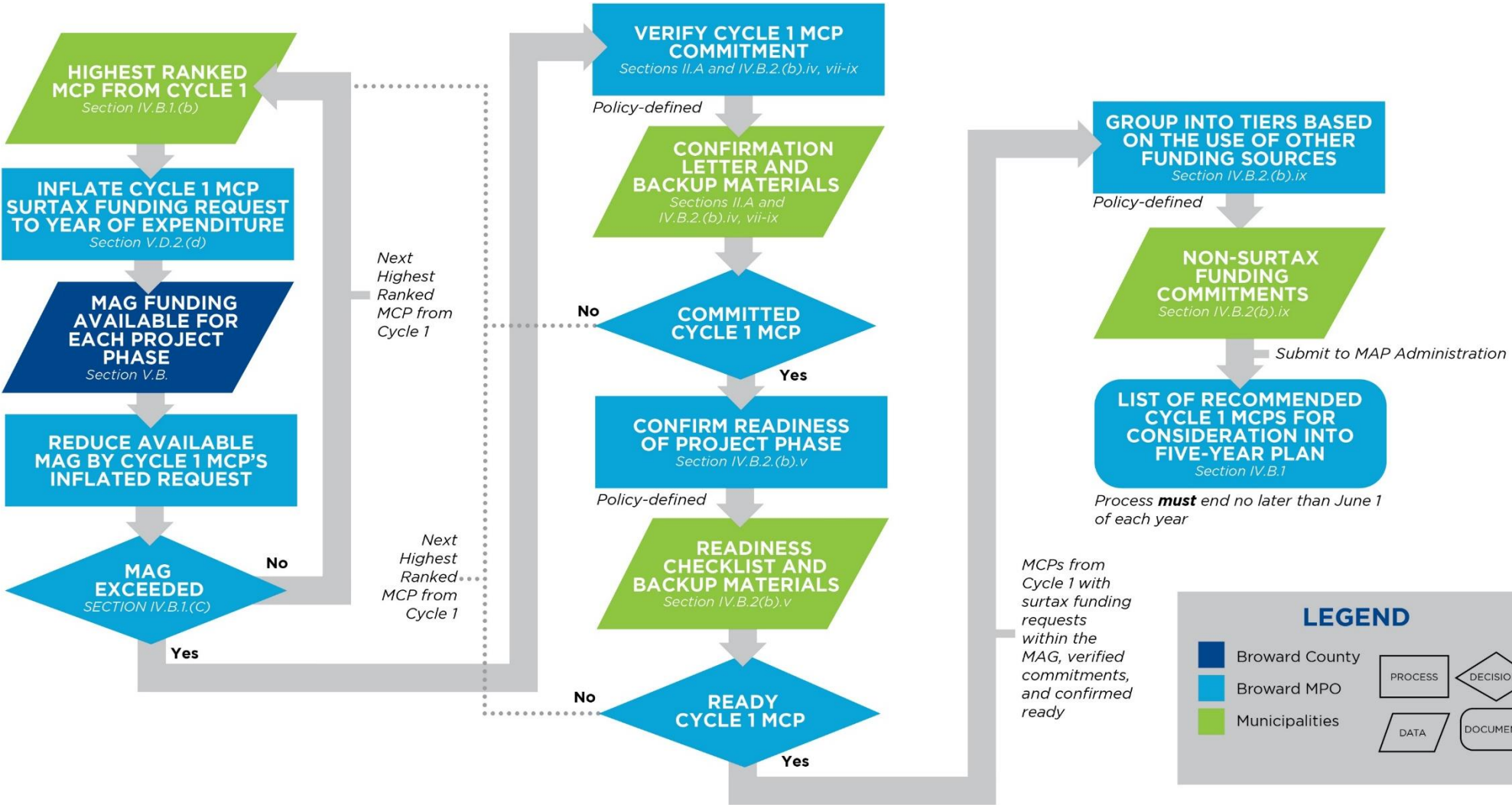
- The application window is open for 28 days.
- New applications are evaluated on a first-come-first-serve basis during the application window.
- During the 28-day window, applicants may submit and edit their New MCPs, should an application be deemed incomplete.
- New MCPs are ranked annually.
- The Oversight Board is responsible for the Final Eligibility Review of **ranked** New MCPs.

Task No. 3



Recommend MCPs

Process must begin no later than April 1 of each year.



Task No. 3 – Key Takeaways



- At the start of the application window, the MPO will begin the recommendation process for Cycle 1 MCPs.
- Recommendations are based on rank and whether a project is ready-to-go.
- Cycle 1 MCPs keep their ranking each year.
- The MPO will provide the County a list of ready and ranked projects up to the MAG amount specified by the County.

Task No. 4



Recommend MCPs Exceeding the MAG

- Should the County identify available funds that exceed the MAG, the MPO may recommend New MCPs for consideration of funds.
- The MPO has identified two options as to how recommendations may be presented:
 - Option 1: Using same method as Cycle 1
 - Option 2: Using an additional geographic equity filter

Bringing It All Together



Special Thanks

Many thanks to **Angela Wallace** and **Gretchen Cassini** for making this application cycle a well-thought-out and premium process!



Move People & Goods | Create Jobs | Strengthen Communities



Questions?

Bryan Caletka

Director of Transportation Policy

caletkab@browardmpo.org

(954) 876-0070

Todd A. Brauer, AICP, PTP

President/COO

tbrauer@whitehousegroup.com

(754) 701-1611