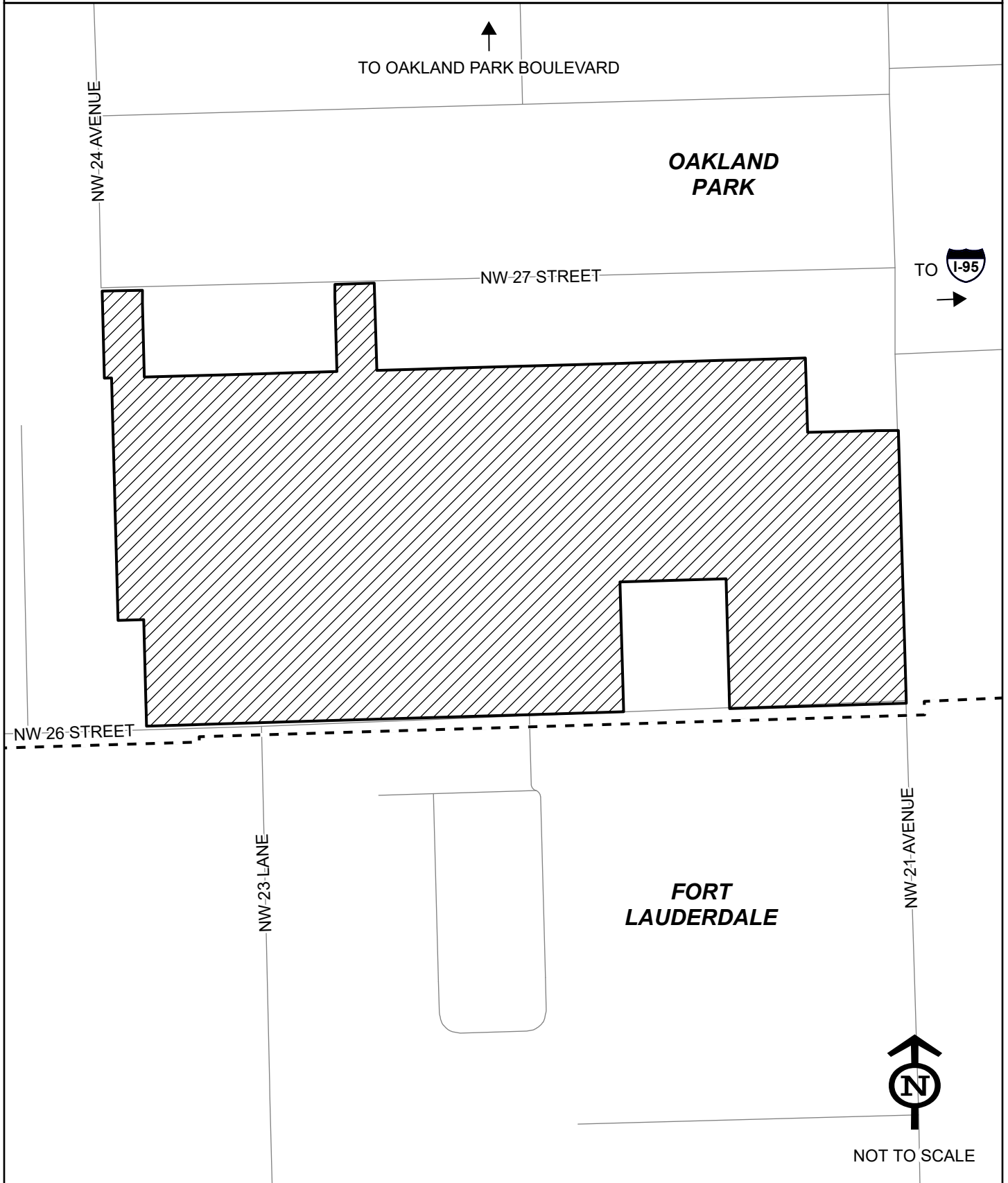


Amendment PC 24-5

 Site



NW 24 AVENUE

↑
TO OAKLAND PARK BOULEVARD

**OAKLAND
PARK**

NW 27 STREET

TO 
→

NW 26 STREET

NW 23 LANE

**FORT
LAUDERDALE**

NW 21 AVENUE



NOT TO SCALE

**BROWARDNEXT - BROWARD COUNTY LAND USE PLAN
AERIAL PHOTOGRAPH
AMENDMENT PC 24-5**

