

Amendment PC 24-4

 Site

SUNRISE

PLANTATION

9.27 acres of
Commerce to
Commerce within a
Dashed-Line Area

SUNRISE BOULEVARD

NW-17-COURT

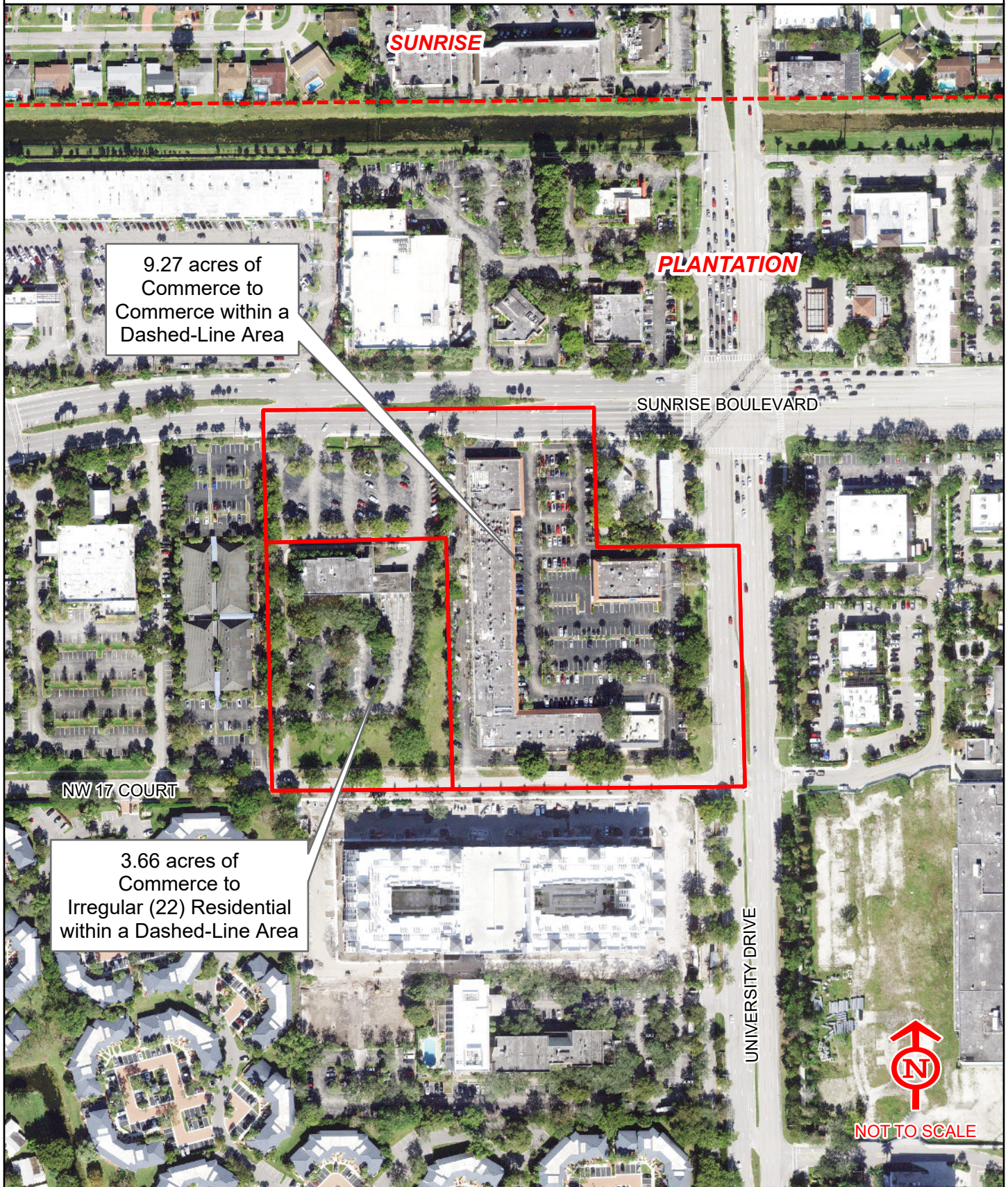
3.66 acres of
Commerce to
Irregular (22) Residential
within a Dashed-Line Area

UNIVERSITY DRIVE



NOT TO SCALE

**BROWARDNEXT - BROWARD COUNTY LAND USE PLAN
AERIAL PHOTOGRAPH
AMENDMENT PC 24-4**



9.27 acres of
Commerce to
Commerce within a
Dashed-Line Area

3.66 acres of
Commerce to
Irregular (22) Residential
within a Dashed-Line Area



NOT TO SCALE