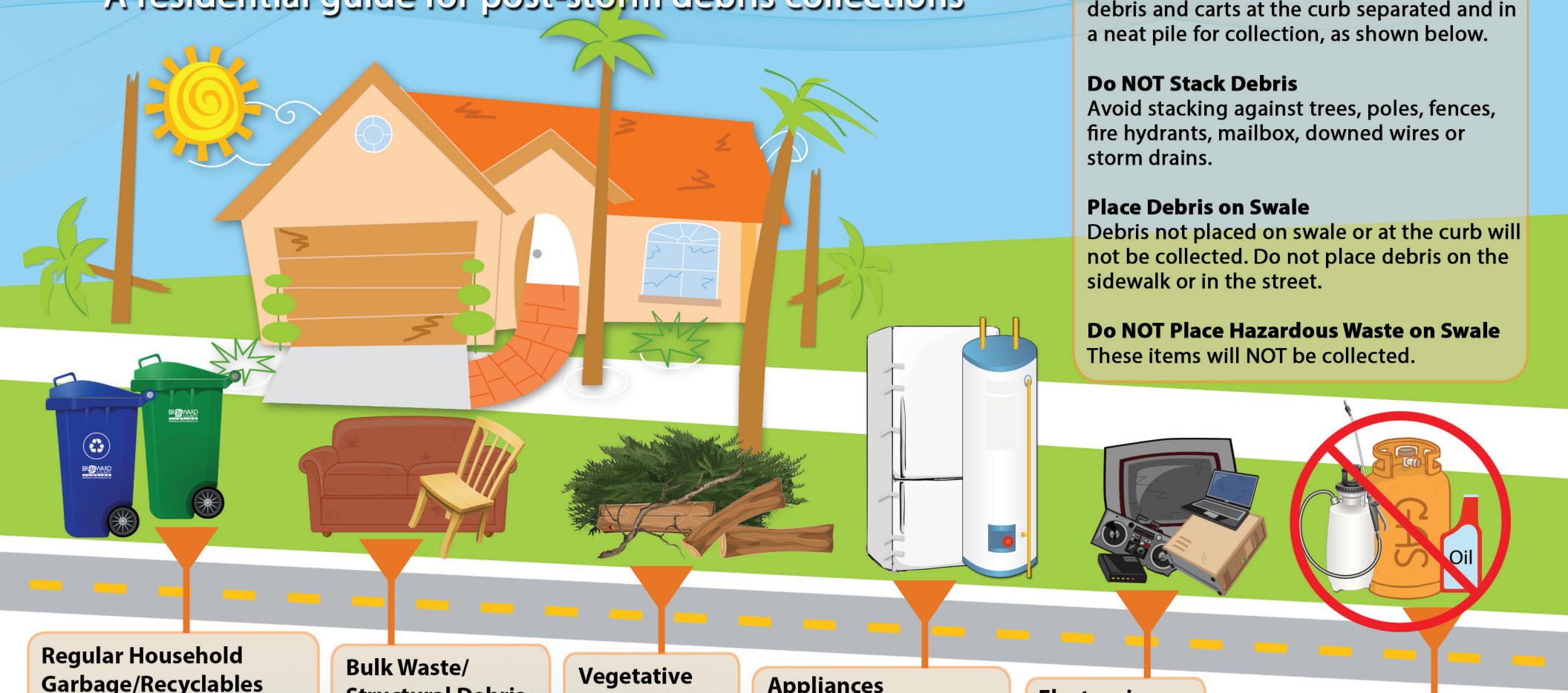


YOUR CLEANUP AFTER THE STORM

A residential guide for post-storm debris collections



Keep it Manageable

Follow these guidelines when putting out your debris for a speedier clean-up. Place all debris and carts at the curb separated and in a neat pile for collection, as shown below.

Do NOT Stack Debris

Avoid stacking against trees, poles, fences, fire hydrants, mailbox, downed wires or storm drains.

Place Debris on Swale

Debris not placed on swale or at the curb will not be collected. Do not place debris on the sidewalk or in the street.

Do NOT Place Hazardous Waste on Swale

These items will NOT be collected.

Regular Household Garbage/Recyclables

Place regular household garbage in green cart. Place recyclable materials in blue cart. Place carts at the curb for collection.

NOTE: Announcement will be made when these services have resumed.

Bulk Waste/ Structural Debris

- Building Material
- Plumbing
- Drywall
- Lumber
- Carpet
- Furniture
- Mattresses

Vegetative Debris

- Logs
- Shrubs
- Stumps
- Palm Fronds
- Tree Branches

Appliances

- Refrigerators/Freezers
(emptied and all doors removed or secured)
- Air Conditioners
- Washers/Dryers
- Water Heaters
- Dishwashers
- Stoves

Electronics

- Printers
- Stereos
- Televisions
- Computers
- Telephones
- DVD Players
- Other Devices

Household Hazardous Waste

NOTE: Take to Residential Drop-Off Center

- Tires
- Motor Oil
- Pesticides
- Propane Tanks
- Paints/Solvents
- Lawn Chemicals

For more information, please visit Broward.org/recycling



Like Us On Facebook  Follow Us On Twitter 
facebook.com/BrowardCountyRecycling
twitter.com/browardrecycles

4400 copies of this public document were promulgated at a gross cost of \$5,516.69 or \$1.254 per copy including postage, to inform Broward Municipal Services District residents about hurricane preparedness. Proudly printed on recycled content paper 